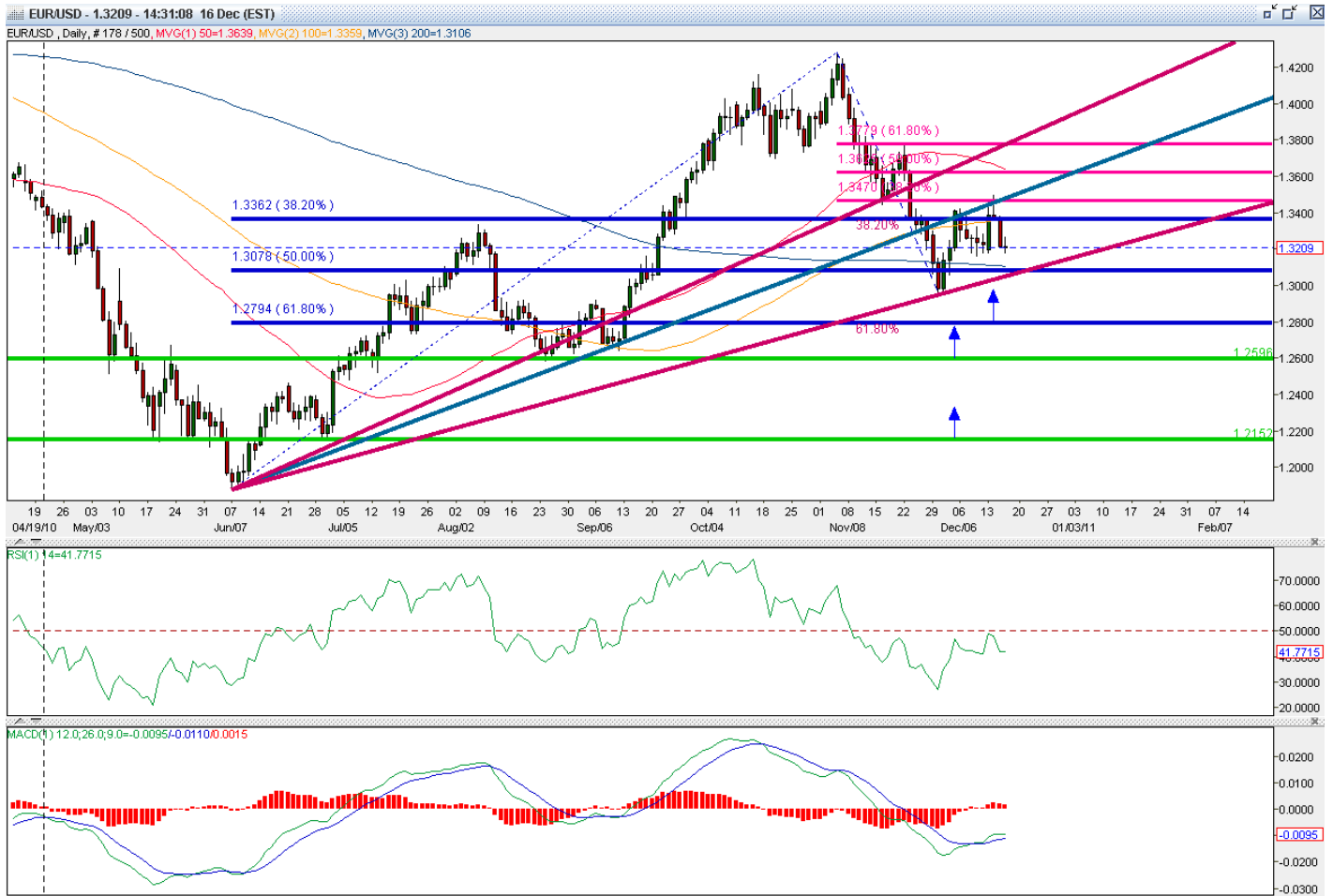
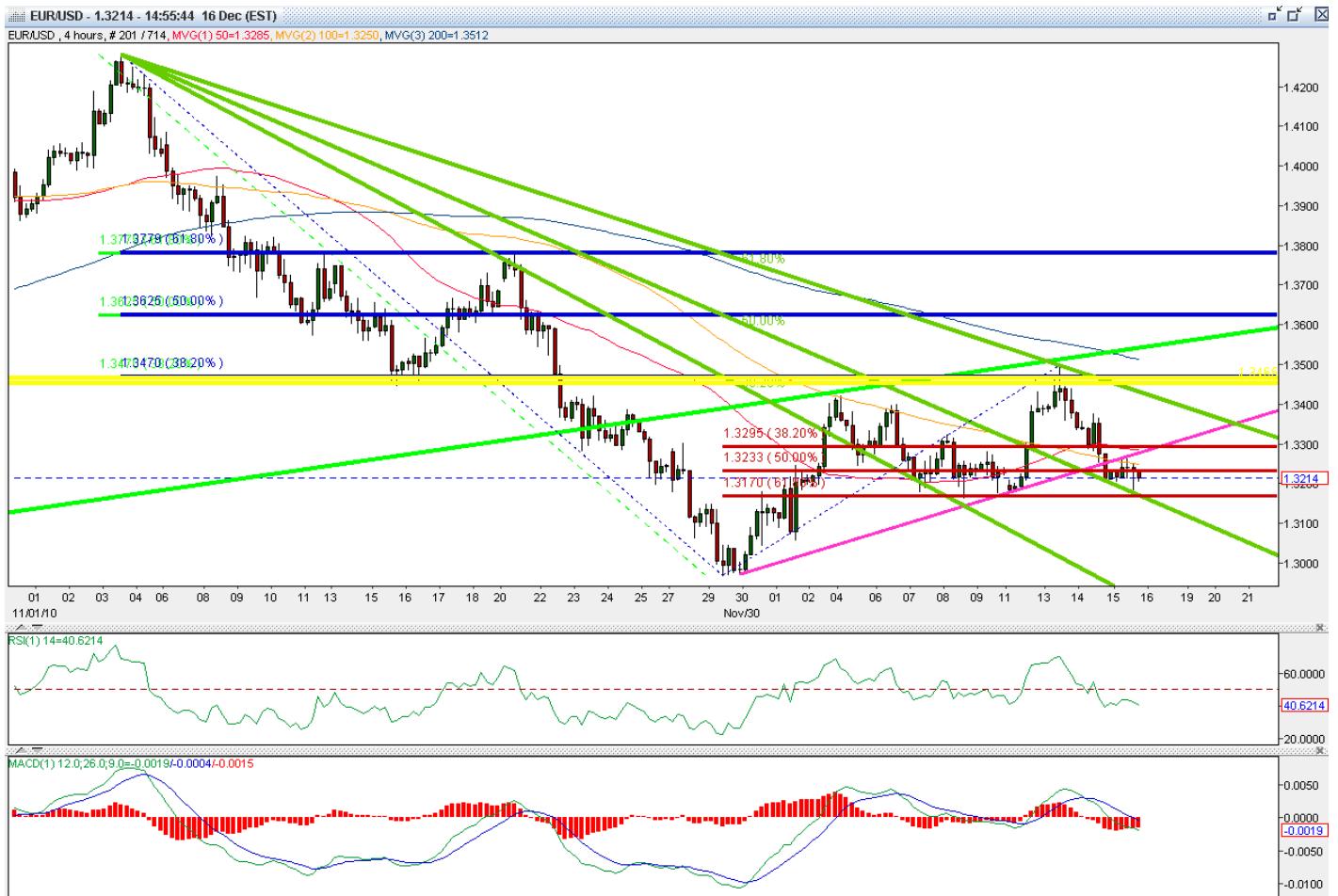


Tech For the Day



EU Daily:

After breaking Fib 50, PA found friction at Fib Fan 61 and retraced back to test old LTL (Lower Trend Line). Second retest of LTL was met with a confluence of LTL and Fib 38. Movements lower than Fib Fan 61 will be met with heavy friction on Fib Retrace of 61. Breaks of that would find Friction on the old Green SRs. Also, notice the confluence of Fib Retrace 61 and old SRs with psychological "00"s.



EU H4:

On the EU H4 chart, PA has broken LTL and found friction on Fib Fan. Second test met with confluence Fan and Retracement fibs. LTL has also been tested again and PA has been slightly rejected. Fib fan has shown great significance on this frame and pair.



GU H4:

GU daily has found a second retest of Fib 38 met with heavy confluence on “00” and Fib Fan. However, PA is being wedge by medium-term LTL so another test is likely in the books. Breaks of this would be met by another similar Fib confluence below.



GU H4:

There is not much on my analysis on the shorter H4 chart. Due to the significant drop, PA analysis is out of my books until more LT direction is made.



AU H4:

AU H4 looked to be forming a nice HS and still may. PA made a nice test of Fib. Only trades off of this would be off Fib attempts and SR level attempts. Slight divergences in RSI and MACD.