

Sw\_Macd\_RSI

USDJPY, H4 147.363 147.475 147.314 147.436



### MACD Above Below Bars BT (On off)

SL&TP Values:

DMI VALUE2

DMI: 31.1397  
+DI: 31.7065  
-DI: 12.0075

Punport\_MA  
CD Multi-  
Timeframe6

PUNPORT FX MACD Multi-Timeframe					
TF	zone	MACD	Sig	Main	Signal
H1	↑	↓	↑	0.23683	0.20761
H4	↑	↑	↑	0.41299	0.36754
D1	↑	↑	↑	0.35783	0.08368
W1	↓	↑	↑	-1.73274	-2.01822
MN1	↑	↓	↓	2.18868	4.38075
Uncertain				Very Strong 100.00%	

Indicators on USDJPY,H4

- [-] Main chart
  - 📌 DMI VALUE2
  - 📌 Punport\_ MACD Multi-Timeframe6
  - 📌 JDD\_Drawingtool
  - 📌 SL&TP Values
  - 📌 MACD Above Below Bars BT
  - 📌 Ma - in color (mtf ema27)\_off HL
  - 📌 ATRStops\_v1o1b\_1
- [-] Indicator window 1
  - 📌 MACD\_HISTO4
- [-] Indicator window 2
  - 📌 Relative Strength Index
- [-] Indicator window 3
  - 📌 MACD\_color

Close

•ATRStopS

- Main Chart:
- DMI VALUE2: Directional Movement Index variant.
- Punport\_ MACD Multi-Timeframe6: MACD (Moving Average Convergence Divergence) with multi-timeframe analysis.
- JDD\_Drawingtool: Custom drawing tool for chart annotations.
- SL&TP Values: Stop Loss and Take Profit value indicators.
- MACD Above Below Bars BT: MACD bars indicating above or below zero.
- Ma - in color (mtf ma27)\_off HL: Moving Average in color, multi-timeframe (EMA49 period), with high/low off.
- ATRStopS
- Indicator Window 1:
- MACD\_HISTO4: MACD histogram.
- Indicator Window 2:
- Relative Strength Index: RSI, a momentum oscillator.
- Indicator Window 3:
- MACD\_color: MACD with color-coded signals.

28 Apr 2025 2 May 08:00 8 May 08:00 14 May 08:00 20 May 08:00 26 May 08:00 30 May 08:00 5 Jun 08:00 11 Jun 08:00 17 Jun 08:00 23 Jun 08:00 27 Jun 08:00 3 Jul 08:00 9 Jul 08:00

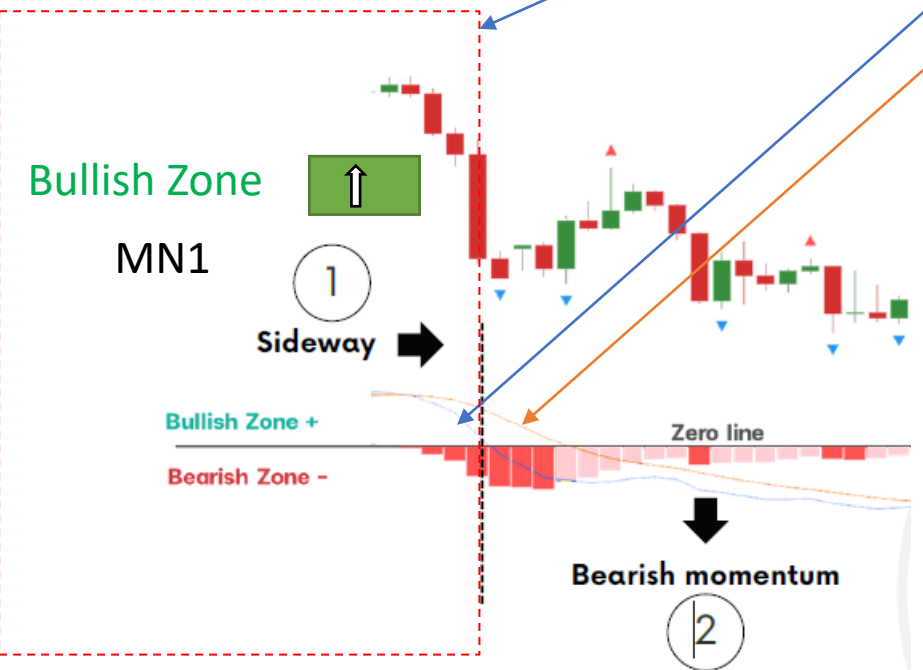
PUNPORT FX MACD Multi-Timeframe					
TF	zone	MACD	Sig	Main	Signal
H1	↑	↓	↑	0.23683	0.20761
H4	↑	↑	↑	0.41299	0.36754
D1	↑	↑	↑	0.35783	0.08368
W1	↓	↑	↑	-1.73274	-2.01822
MN1	↑	↓	↓	2.18868	4.38075
Uncertain				Very Strong 100.00%	

Bullish Zone ↑

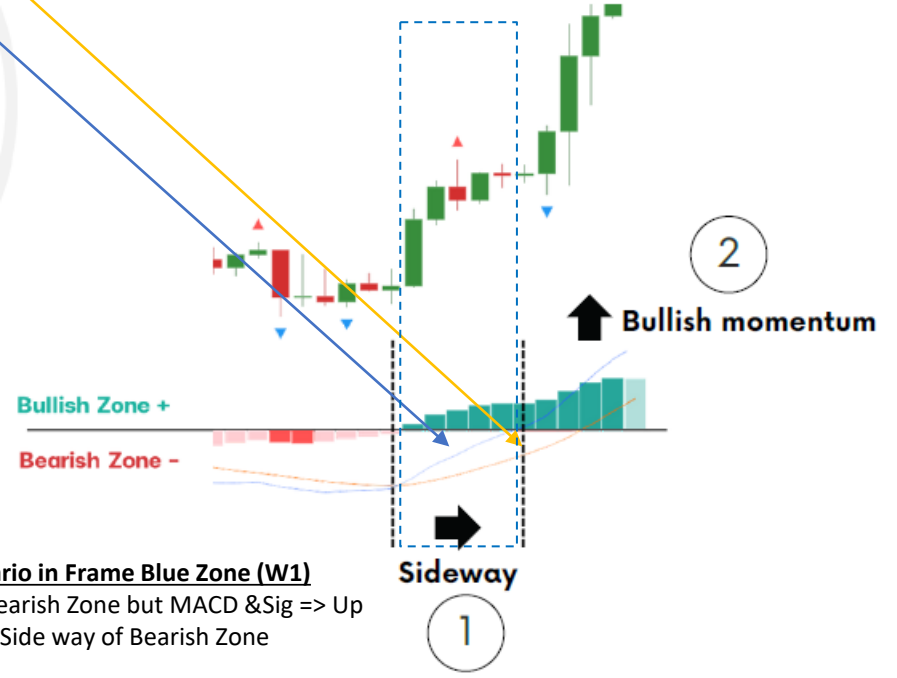
Bearish Zone ↓

Trade TF H4  
D1 and H4 should be Same Zone

**Scenario in Frame Red Zone (MN1)**  
MN1 Bullish Zone but MACD & Sig => Down  
It is a Side way of Bullish Zone



**Scenario in Frame Blue Zone (W1)**  
W1 Bearish Zone but MACD & Sig => Up  
It is a Side way of Bearish Zone



# Important resistance&Support

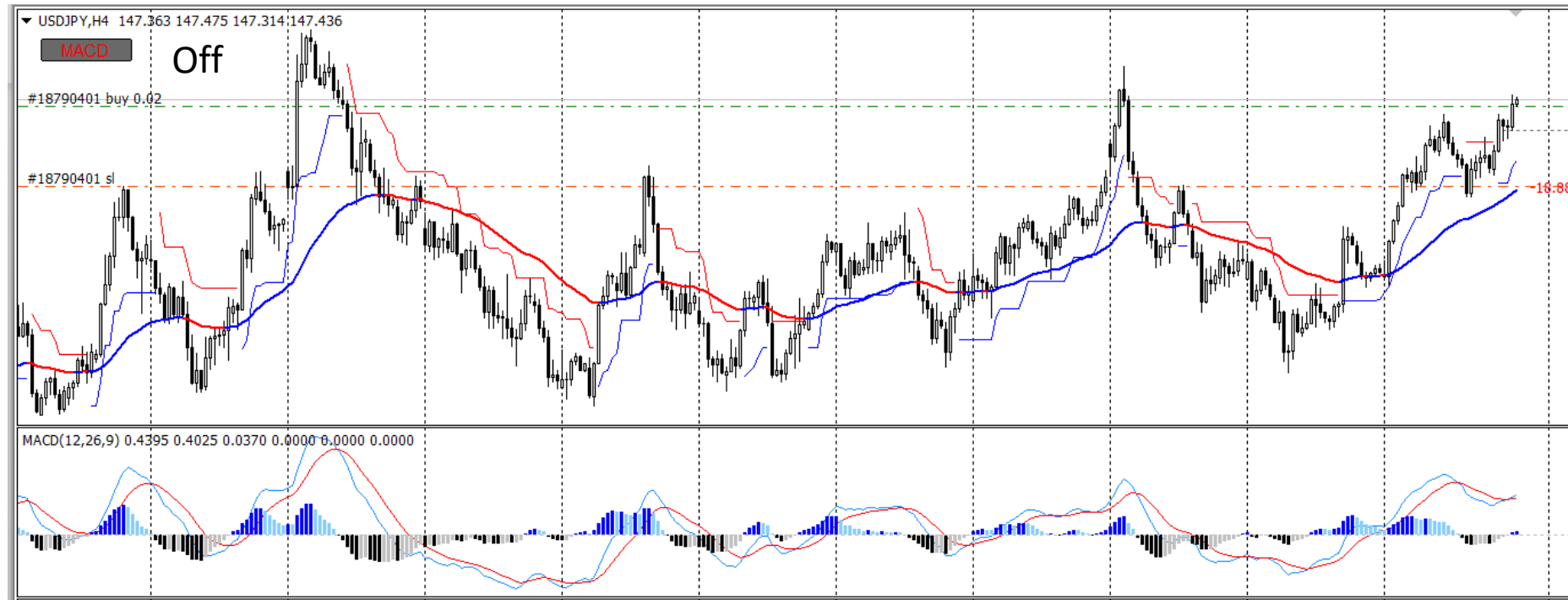
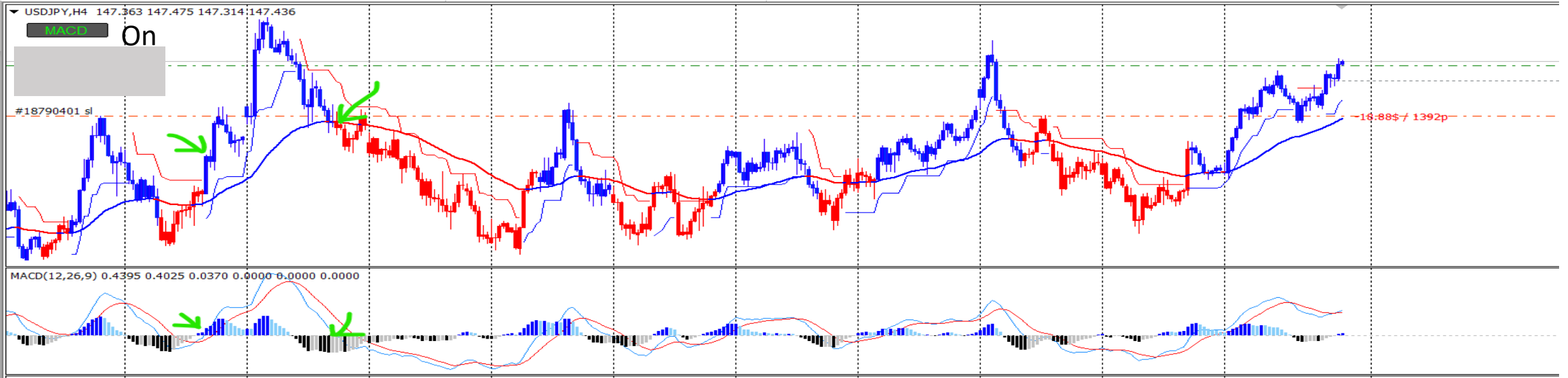


Show shortcuts

## HELP - Keyboard Shortcuts

- A** Draw FULL WIDTH horizontal line(s) / region
- SHIFT** Draw line / region (start at mouse cursor)
- X** Delete last drawn object
- Y** Delete ALL drawn objects
- V** Show / Hide all drawn objects
- B** Show / Hide only drawn LINE/RECTANGLE objects
- N** Show / Hide only drawn TEXT objects
- M** Show / Hide only drawn ARROW objects
- D** Copy drawings to all open charts (same symbol)
- O** Toggle Object Description On/Off
- H** Toggle MT4 Trade Levels On/Off (order lines)

# MACD Above Below Bars BT (On off)



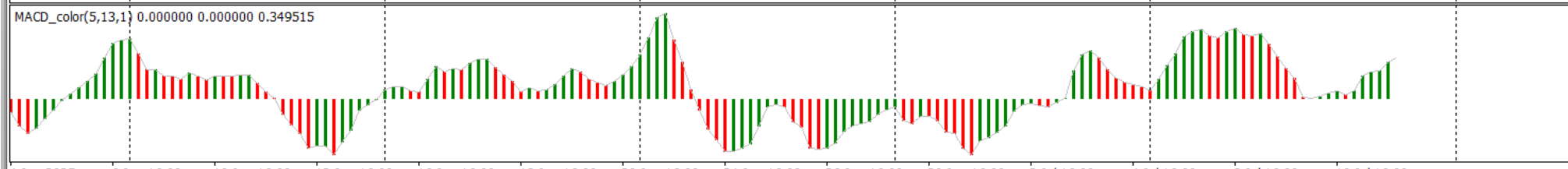
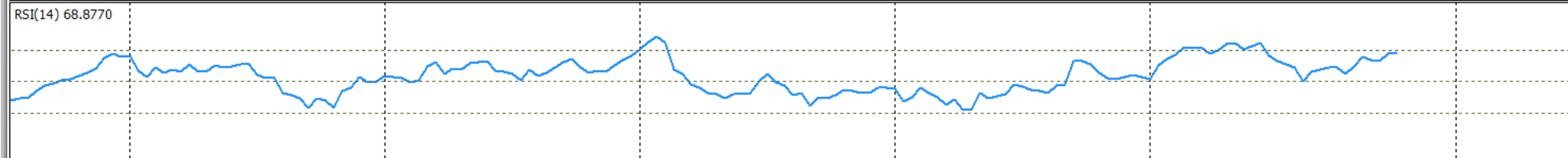
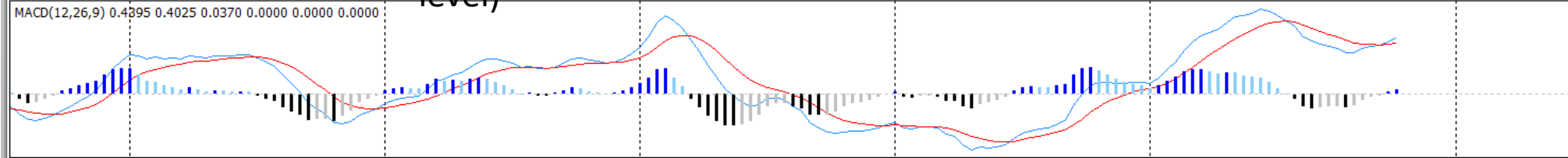


DMI: 31.1397  
+DI: 31.7065  
-DI: 12.0075  
146.900

PUNPORT FX MACD Multi-Timeframe					
TF	zone	MACD	Sig	Main	Signal
H1	↑	↓	↑	0.23683	0.20761
H4	↑	↑	↑	0.41299	0.36754
D1	↑	↑	↑	0.35783	0.08368
W1	↓	↑	↑	-1.73274	-2.01822
MN1	↑	↓	↓	2.18868	4.38075
Uncertain				Very Strong 100.00%	

**Key Point Entry**

- Price near EMA50: Prepare to enter.
- Identify key support and resistance levels.
- Typically, when the price approaches EMA50, it tends to move **sideways**.
- After the sideways movement, observe **candlestick patterns** to confirm whether the price will move **up** or **down**.

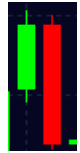


4 Jun 2025 6 Jun 16:00 10 Jun 16:00 12 Jun 16:00 16 Jun 16:00 18 Jun 16:00 20 Jun 16:00 24 Jun 16:00 26 Jun 16:00 30 Jun 16:00 2 Jul 16:00 4 Jul 16:00 8 Jul 16:00 10 Jul 16:00

# ต้าน สำคัญ "Important resistance"

Candlesticks will be green and red in pairs

A significant resistance level where the price is expected to hold.



เขียว แดง คู่  
ถ้าเจอ คือ ไซ้หมด



แนวรับสำคัญ แท่งเทียน จะ แดง เขียว คู่กัน

A significant support level where the price is expected to hold.

แดง เขียวคู่



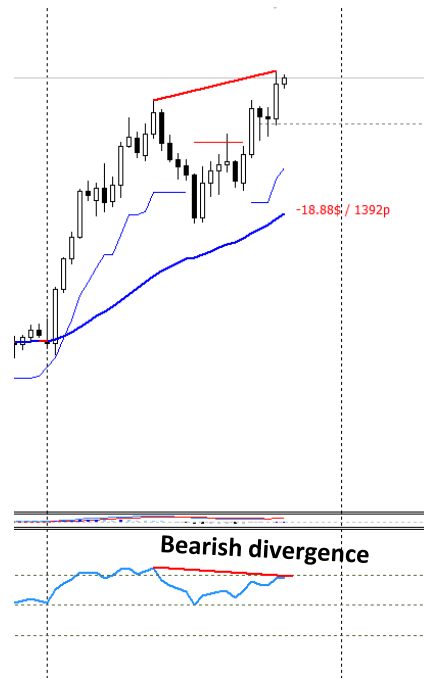
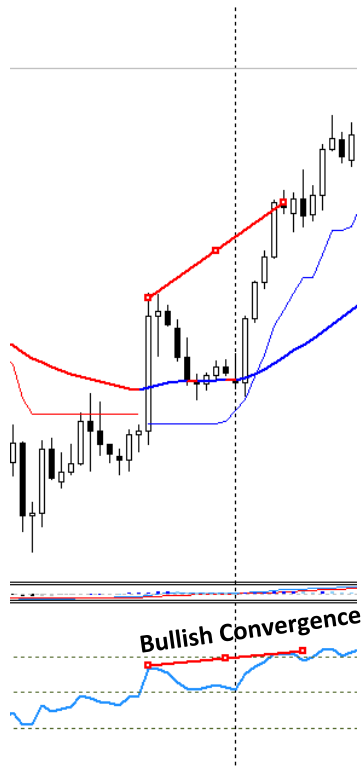
Important support

Candlesticks will be red and green in pairs

ถ้าเจอ คือ ไซ้หมด

ต้าน สำคัญ





Price - Oscillator indicator	Bullish market		Bearish market	
	Bullish Convergence TF4H	Bearish Divergence TF4H	Bearish Convergence TF4H	Bullish Divergence TF4H
Price				
Oscillator indicator (RSI)				

## Convergence & Divergence Relative Strength Index (RSI)

Using RSI to assess Momentum with Convergence and Divergence

- **Convergence:** When the RSI swing high aligns with the price swing high, indicating Bullish Convergence and increasing Momentum.
- **Divergence:** When the RSI swing high aligns with the price swing low, indicating Bearish Divergence and potential Momentum shift (Sideway).

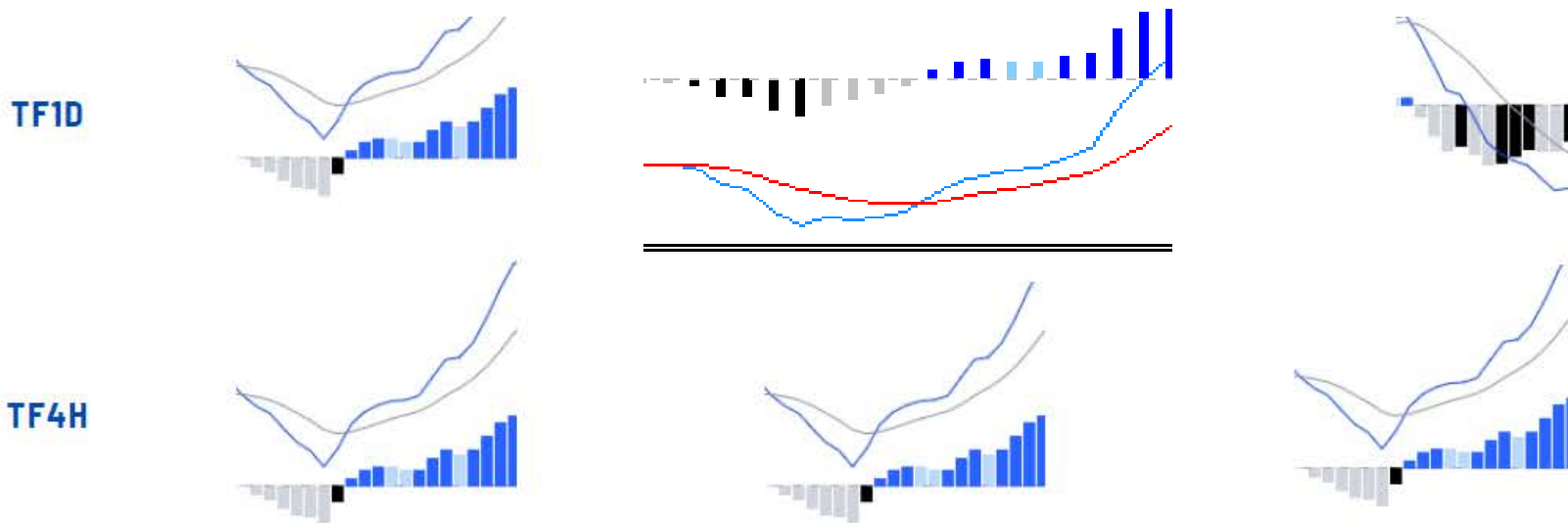
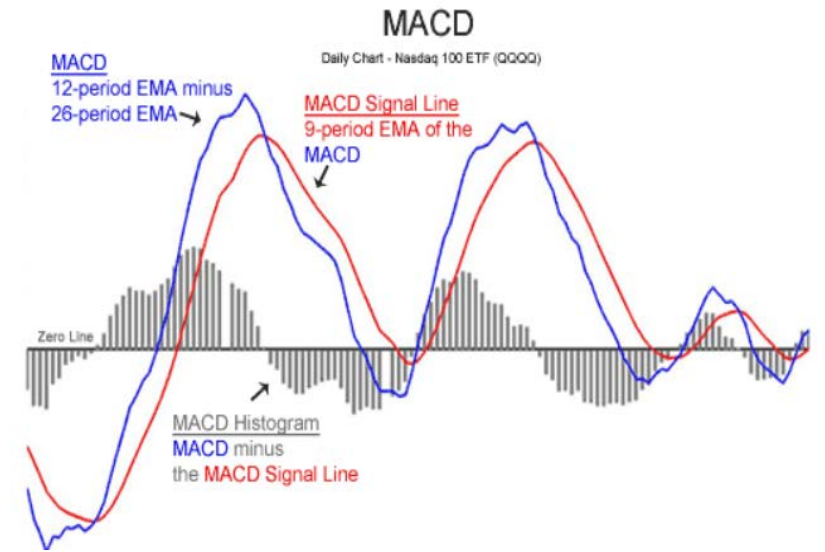
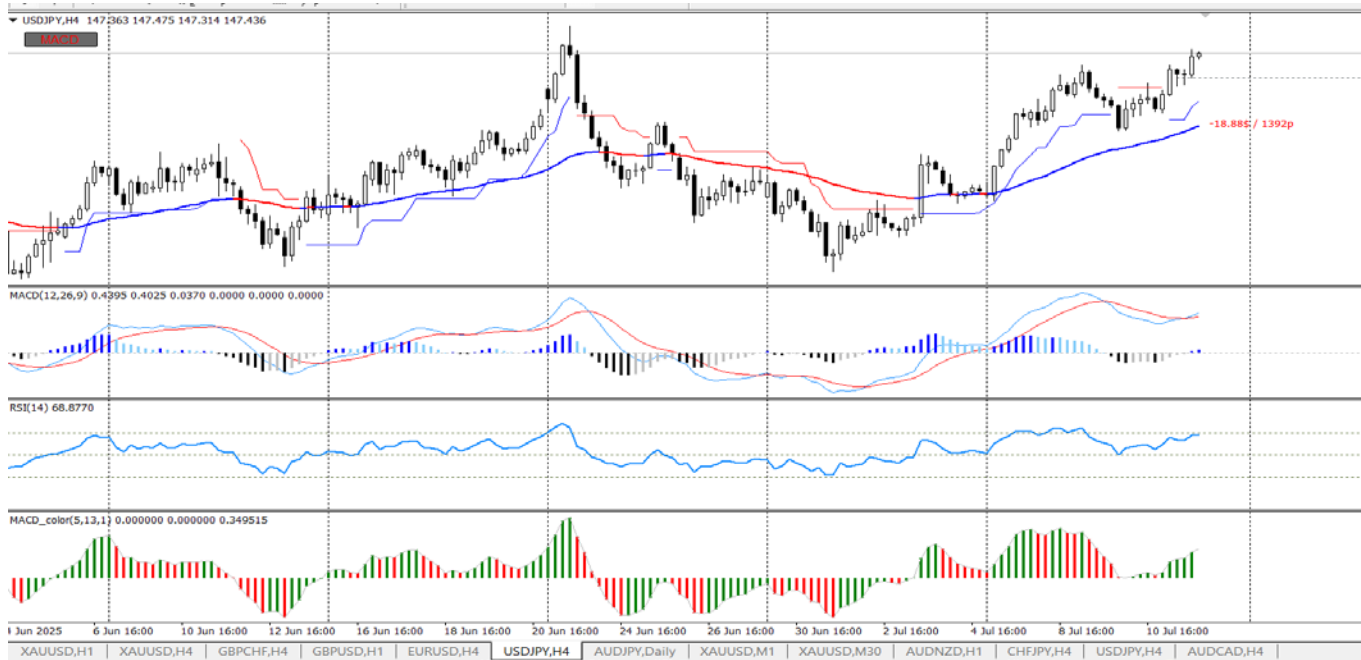
Convergence and divergence in the Relative Strength Index (RSI) are technical analysis concepts that help traders identify potential trend reversals. Convergence occurs when the RSI moves in the same direction as price, confirming the existing trend. Divergence, on the other hand, happens when the RSI moves in the opposite direction of price, potentially signaling a weakening trend and a possible reversal.

Convergence:

- **Definition:** RSI moves in the same direction as price, reinforcing the current trend.
- **Bullish Convergence:** When price makes a higher high and the RSI also makes a higher high, indicating a strong uptrend.
- **Bearish Convergence:** When price makes a lower low and the RSI also makes a lower low, indicating a strong downtrend.

Divergence:

- **Definition:** RSI moves in the opposite direction of price, suggesting a potential trend reversal.
- **Bullish Divergence:**
  - When price makes a lower low, but the RSI makes a higher low, potentially signaling the end of a downtrend.
- **Bearish Divergence:**
  - When price makes a higher high, but the RSI makes a lower high, potentially signaling the end of an uptrend.



**Momentum Primary Trend & Secondary Trend**  
 Based on Dow Theory across 3 Time Frames

- Primary trend TF1D using MACD and secondary trend using MACD TF1D
- Secondary trend TF4H using Bos - Momentum
- Minor trend using indicators to confirm trends

**TF1D**

- Strong uptrend

**TF4H**

- Strong uptrend
- Strong downtrend
- Weak

•Max Strong uptrend

•Strong uptrend

Weak

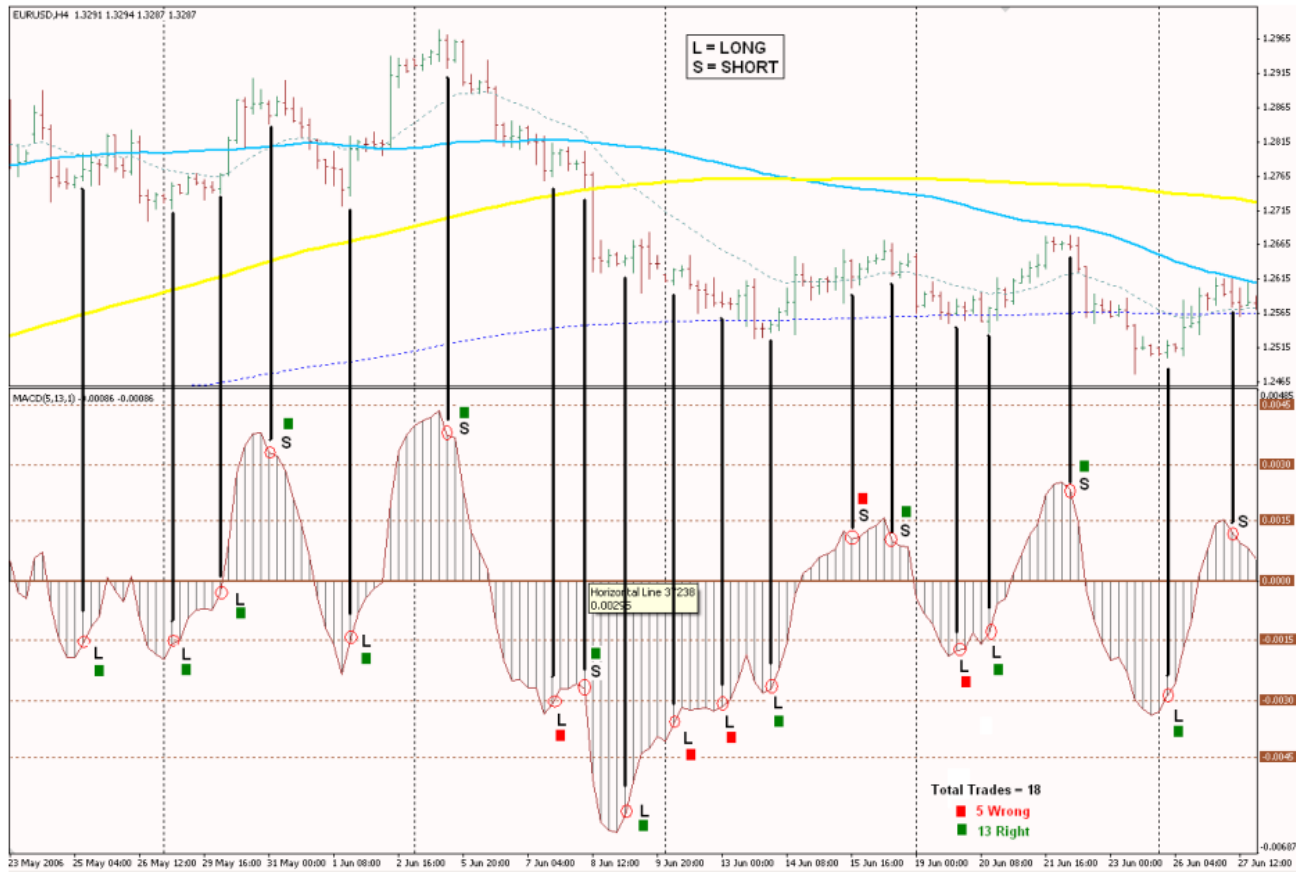


FIGURE 3

## Concept how to used MACD 5 13 1 (Entry TF H4 only)

### MACD:

MACD settings at

1. Fast EMA 5
2. Slow EMA 13
3. MACD EMA 1

Stoploss have to be inside the breakout otherwise it can be triggered and then sometimes it can be very big before entry signal is given by the MACD.

Here is what I normally do when the MACD shows a signal but the stoploss are too big in relation to my capital or what I am comfortable with. I enter the trade in three stages with my stoploss set at the same level.

