

# Unconventional Forex Trading Mode : S.A.T.O.R.I

Reviews by

Chongrux : Reviews ,coordinator (Thailand, Chaing Mai)

Beam : RTD Excel programmer (Thailand ,Chaing Mai

Zorox: Prof. programmer MQL4(Forex factory)

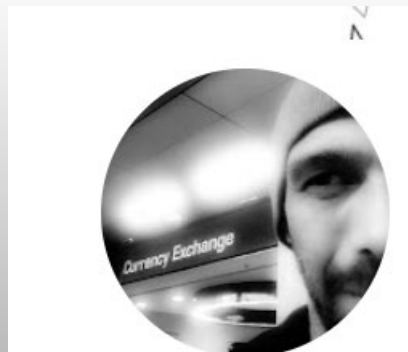


Cr....Prof. Dr. Macro

# S.A.T.O.R.I. FX

Simplified Analysis Tools Over Reliable Information

## MAIN INTERFACE

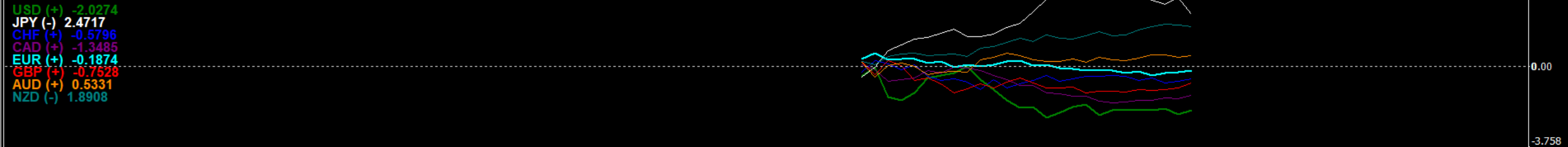


EURUSD,M15 1.11933 1.11943 1.11919 1.11920

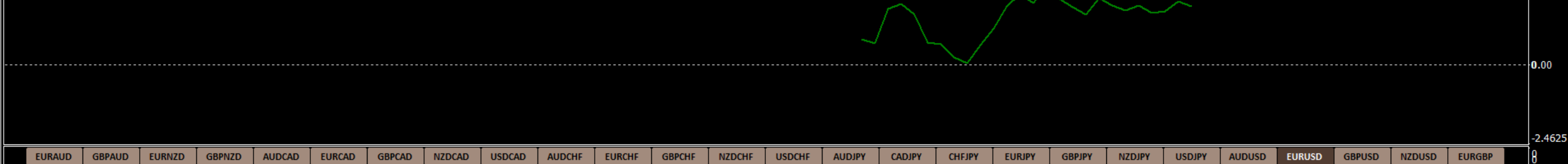
EUR = base  
USD = q



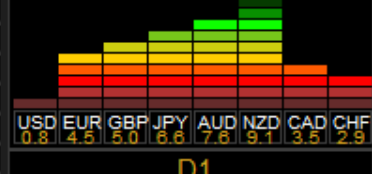
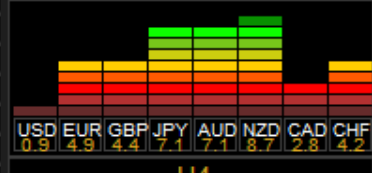
Zorox, Portfolio Performance SATORI : -2.0274 2.4717 -0.5796 -1.3485 -0.7528 0.5331 -0.1873 1.8908



Zorox, Portfolio Performance SATORI : 1.8401



Trading														No Trades To Monitor			Basket TakeProfit = \$ 0			Basket StopLoss = \$ 0			Lowest= 0.00 (0.00%)			Highest= 0.00 (0.00%)			Lock= 0.00			0 0	
Symbol	Sprd	PSO(0)	ADP	H1	H4	D1	H1	H4	D1	SAT1	SAT2	SAT3	Function	Disable	Lots	Buy	Sell	Orders	Buy	Sell	Buy	Sell											
AUDCAD	2.0	53.9	32.6	4.24	1.05	-12.3	-1.52	-2.06	-10.2	5.78	3.11	-2.11	B	S	CLS	AUDCAD	0.00	0.00	0	0	0.00	0.00	0.00	0.00									
AUDCHF	1.7	60.9	28.7	4.24	1.05	-12.3	-3.53	3.93	12.0	7.78	-2.9	-24.3	B	S	CLS	AUDCHF	0.00	0.00	0	0	0.00	0.00	0.00	0.00									
AUDJPY	1.8	22.1	46.9	4.24	1.05	-12.3	3.05	-2.61	41.4	1.19	3.66	-53.8	B	S	CLS	AUDJPY	0.00	0.00	0	0	0.00	0.00	0.00	0.00									
AUDNZD	4.5	1.5	30.0	4.24	1.05	-12.3	5.57	9.26	-0.57	-1.3	-8.2	-11.7	B	S	CLS	AUDNZD	0.00	0.00	0	0	0.00	0.00	0.00	0.00									
AUDUSD	1.0	101.0	33.4	4.24	1.05	-12.3	-7.49	-11.8	-20.5	11.7	12.9	8.2	B	S	CLS	AUDUSD	0.00	0.00	0	0	0.00	0.00	0.00	0.00									
CADCHF	1.7	29.6	27.6	-1.52	-2.06	-10.2	-3.53	3.93	12.0	2.01	-6.0	-22.2	B	S	CLS	CADCHF	0.00	0.00	0	0	0.00	0.00	0.00	0.00									
CADJPY	1.7	52.0	42.1	-1.52	-2.06	-10.2	3.05	-2.61	41.4	-4.6	0.55	-51.7	B	S	CLS	CADJPY	0.00	0.00	0	0	0.00	0.00	0.00	0.00									
CHFJPY	2.6	127.6	46.7	-3.53	3.93	12.0	3.05	-2.61	41.4	-6.6	6.54	-29.5	B	S	CLS	CHFJPY	0.00	0.00	0	0	0.00	0.00	0.00	0.00									
EURAUD	3.2	95.2	61.4	-1.14	-0.74	-2.16	4.24	1.05	-12.3	-5.4	-1.8	10.2	B	S	CLS	EURAUD	0.00	0.00	0	0	0.00	0.00	0.00	0.00									
EURCAD	2.6	0.7	50.3	-1.14	-0.74	-2.16	-1.52	-2.06	-10.2	0.38	1.32	8.04	B	S	CLS	EURCAD	0.00	0.00	0	0	0.00	0.00	0.00	0.00									
EURCHF	3.5	22.3	26.4	-1.14	-0.74	-2.16	-3.53	3.93	12.0	2.39	-4.7	-14.2	B	S	CLS	EURCHF	0.00	0.00	0	0	0.00	0.00	0.00	0.00									
EURGBP	3.1	14.3	29.1	-1.14	-0.74	-2.16	0.83	3.01	-7.71	-2.0	-3.7	5.55	B	S	CLS	EURGBP	0.00	0.00	0	0	0.00	0.00	0.00	0.00									
EURJPY	3.7	80.8	53.4	-1.14	-0.74	-2.16	3.05	-2.61	41.4	-4.2	1.88	-43.8	B	S	CLS	EURJPY	0.00	0.00	0	0	0.00	0.00	0.00	0.00									
EURNZD	6.7	124.0	67.7	-1.14	-0.74	-2.16	5.57	9.26	-0.57	-6.7	-10.8	-1.6	B	S	CLS	EURNZD	0.00	0.00	0	0	0.00	0.00	0.00	0.00									
EURUSD	0.8	85.8	38.3	-1.14	-0.74	-2.16	-7.49	-11.8	-20.5	6.35	11.1	18.4	B	S	CLS	EURUSD	0.00	0.00	0	0	0.00	0.00	0.00	0.00									
GBPAUD	9.9	56.9	75.7	0.83	3.01	4.24	1.05	-12.3	3.4	1.96	4.60	B	S	CLS	GBPAUD	0.00	0.00	0	0	0.00	0.00	0.00	0.00										
GBPCAD	8.7	34.6	66.0	0.83	3.01	-7.71	-1.52	-2.06	-10.2	2.35	5.07	2.50	B	S	CLS	GBPCAD	0.00	0.00	0	0	0.00	0.00	0.00	0.00									
GBPCHF	6.0	60.4	47.8	0.83	3.01	-7.71	-3.53	3.93	12.0	4.36	-0.9	-19.7	B	S	CLS	GBPCHF	0.00	0.00	0	0	0.00	0.00	0.00	0.00									
GBPJPY	8.8	58.9	72.9	0.83	3.01	-7.71	3.05	-2.61	41.4	-2.2	5.62	-49.2	B	S	CLS	GBPJPY	0.00	0.00	0	0	0.00	0.00	0.00	0.00									
GBPNZD	14.6	107.6	83.3	0.83	3.01	-7.71	5.57	9.26	-0.57	-4.7	-6.3	-7.1	B	S	CLS	GBPNZD	0.00	0.00	0	0	0.00	0.00	0.00	0.00									
GBPUSD	1.0	129.9	56.0	0.83	3.01	-7.71	-7.49	-11.8	-20.5	8.32	14.8	12.8	B	S	CLS	GBPUSD	0.00	0.00	0	0	0.00	0.00	0.00	0.00									
NZDCAD	3.4	71.0	34.6	5.57	9.26	-0.57	-1.52	-2.06	-10.2	7.09	11.3	9.63	B	S	CLS	NZDCAD	0.00	0.00	0	0	0.00	0.00	0.00	0.00									
NZDCHF	2.5	68.9	28.1	5.57	9.26	-0.57	-3.53	3.93	12.0	9.10	5.32	-12.6	B	S	CLS	NZDCHF	0.00	0.00	0	0	0.00	0.00	0.00	0.00									
NZDJPY	3.3	41.2	39.5	5.57	9.26	-0.57	3.05	-2.61	41.4	2.52	11.9	-42.0	B	S	CLS	NZDJPY	0.00	0.00	0	0	0.00	0.00	0.00	0.00									
NZDUSD	2.4	101.2	32.1	5.57	9.26	-0.57	-7.49	-11.8	-20.5	13.1	21.1	20.0	B	S	CLS	NZDUSD	0.00	0.00	0	0	0.00	0.00	0.00	0.00									
USDCAD	1.3	103.7	43.0	-7.49	-11.8	-20.5	-1.52	-2.06	-10.2	-6.0	-9.8	-10.3	B	S	CLS	USDCAD	0.00	0.00	0	0	0.00	0.00	0.00	0.00									
USDCHF	1.2	29.0	36.3	-7.49	-11.8	-20.5	-3.53	3.93	12.0	-4.0	-15.8	-32.8	B	S	CLS	USDCHF	0.00	0.00	0	0	0.00	0.00	0.00	0.00									
USDJPY	1.1	181.0	53.8	-7.49	-11.8	-20.5	3.05	-2.61	41.4	-10.5	-9.2	-62.8	B	S	CLS	USDJPY	0.00	0.00	0	0	0.00	0.00	0.00	0.00									



M5	M15	M30	H1	H4	D1
USD	CAD	CAD	GBP	NZD	NZD
CHF	CHF	GBP	NZD	AUD	AUD
CAD	GBP	EUR	CAD	JPY	JPY
AUD	USD	CHF	AUD	EUR	GBP
GBP	EUR	USD	EUR	GBP	EUR
NZD	AUD	AUD	USD	CHF	CAD
EUR	NZD	NZD	CHF	CAD	CHF
JPY	JPY	JPY	JPY	USD	USD

SATORI			
1	NZD	5.57	↑
2	AUD	4.24	↑
3	JPY	3.05	↑
4	GBP	0.83	↑
5	EUR	-1.14	↓
6	CAD	-1.52	↓
7	CHF	-3.53	↓
8	USD	-7.49	↓

H4 [12]			
1	NZD	9.26	↑
2	CHF	3.93	↓
3	GBP	3.01	↑
4	AUD	1.05	↑
5	EUR	-0.74	↓
6	CAD	-2.06	↓
7	JPY	-2.61	↓
8	USD	-11.8	↓

D1 [5]			
1	JPY	41.47	↑
2	CHF	12.02	↑
3	NZD	-0.57	↓
4	EUR	-2.16	↓
5	GBP	-7.71	↓
6	CAD	-10.2	↓
7	AUD	-12.3	↓
8	USD	-20.5	↓

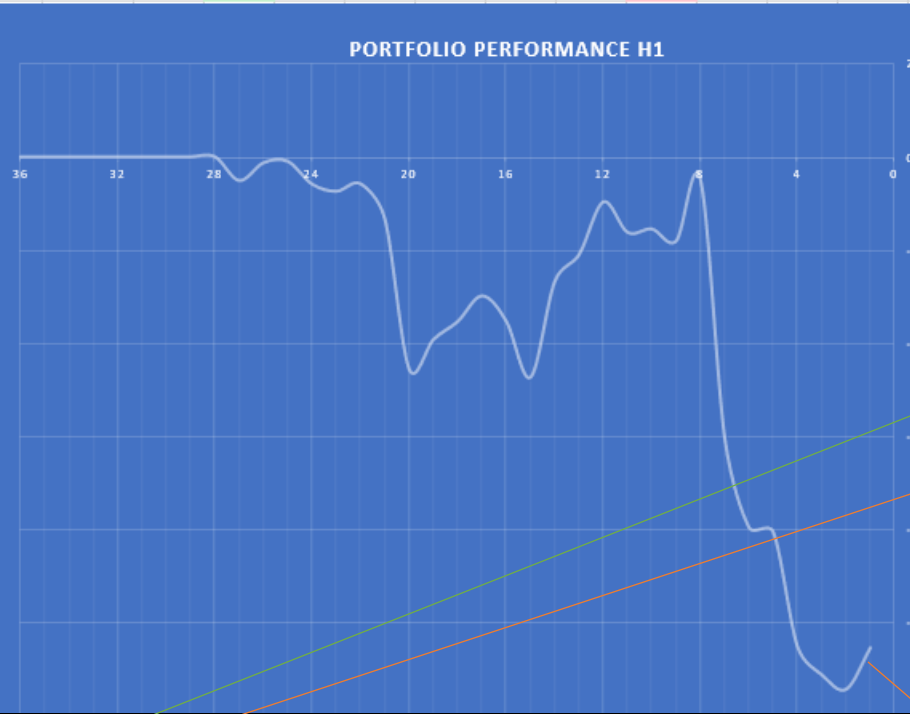
(NZD); Base (NZD) - Quote (USD), strength NZD- strength USD = SAT1 (performance H1 ) (5.57-(-7.49)= 13.1



# Confirmed Data

Indicator & Excel RTD

ID	Portfolio Performance	Portfolio EUR	USD	CAD	CHF	GBP	AUD	NZD	JPY	DD	ID	EUR	USD	CAD	CHF	GBP	AUD	NZD	JPY	EW	EK
1	10.5395		Buy						Sell	Buy	1	-1.14284	-7.49075	-1.52014	-3.28632	0.82984	4.24362	5.56588	3.04871	Market performance H1	
2	-11.42999										2	-1.15754	-7.51449	-1.72747	-3.35015	0.51986	4.12693	5.41783	3.91549	5.5659	NZD
3	-11.11937										3	-1.13567	-7.21764	-1.54784	-3.15434	0.35951	3.90654	5.11658	3.90173	4.2436	AUD
4	-10.51872										4	-0.90363	-7.35601	-1.03215	-3.28913	0.81568	4.05562	4.86813	3.16271	3.0487	JPY
5	-8.05891										5	-0.93594	-6.06108	-0.33314	-3.56713	0.79575	4.02266	4.54220	1.99783	0.8298	GBP
6	-7.95805										6	-0.78219	-6.00499	-0.35870	-3.01303	1.05129	3.34681	4.18615	1.95306	-1.1428	EUR
7	-6.03781										7	-0.30974	-5.49266	-0.31172	-2.36295	1.20739	3.24230	3.77463	0.54515	-1.5201	CAD
8	-0.49231										8	-0.80312	-1.63754	0.40120	-2.30452	1.12858	2.41729	2.33280	-1.14523	-3.2863	CHF
9	-1.80811										9	-0.92837	-1.75447	-0.09440	-1.80134	0.75611	2.27869	1.73298	0.05364	-7.4908	USD
10	-1.55060										10	-0.58453	-1.75861	-0.25714	-1.62736	0.85808	2.27271	1.49827	-0.20800		
11	-1.62435										11	-0.49340	-1.71641	-0.36429	-1.51190	0.93346	2.01506	1.39107	-0.09206	Market performance H4	
12	-0.96942										12	-0.48970	-1.53556	-0.24023	-1.94510	1.47551	2.09373	1.44868	-0.56614	9.26	NZD
13	-2.10202										13	-0.28746	-1.73972	-0.51758	-1.59331	1.48558	1.48929	0.95278	0.36230	3.18	CHF
14	-2.67479										14	-0.52483	-1.71753	-0.58686	-0.84386	0.67613	1.30162	0.77338	0.95726	3.01	GBP
15	-4.73513										15	-0.35157	-2.19764	-1.10776	-1.30859	0.46128	1.18164	0.81248	2.53749	1.05	AUD
16	-3.52845										16	-0.01667	-1.68577	-0.84219	-1.53003	0.30651	0.99075	1.03066	1.84268	-0.74	EUR
17	-2.91600										17	0.10314	-1.69112	-0.78227	-1.43205	0.19862	1.42801	0.97196	1.29488	-2.06	CAD
18	-3.53730										18	0.04365	-1.54611	-0.74641	-1.13478	-0.04544	0.81750	0.66884	1.99118	-2.61	JPY
19	-3.92228										19	0.08133	-1.52721	-0.86789	-1.01076	-0.04038	0.29212	0.69702	2.39508	-11.84	USD
20	-4.55714										20	-0.03749	-1.82341	-1.08594	-0.90575	-0.19784	0.37688	0.91088	2.73403		
21	-1.33200										21	0.27201	-0.95011	-0.50676	-0.64854	0.28542	0.46268	0.72111	0.38189	Market performance D1	
22	-0.58087										22	0.29371	-0.65856	-0.35844	-0.51677	0.44069	0.42987	0.46807	-0.07769	41.47	JPY
23	-0.74177										23	0.24367	-0.53999	-0.50721	-0.49468	0.33415	0.24665	0.51254	0.20178	9.24	CHF
24	-0.58750										24	0.20694	-0.35912	-0.67749	-0.28482	0.25673	0.26475	0.27200	0.22838	-0.57	NZD
25	-0.09835										25	0.25292	-0.35768	-0.62832	-0.60402	0.44172	0.54150	0.60683	-0.25933	-2.16	EUR
26	-0.13025										26	0.20017	-0.20535	-0.21298	-0.59172	0.16212	0.59400	0.18477	-0.07510	-7.71	GBP
27	-0.51157										27	0.01073	-0.51952	-0.20217	-0.53824	0.26703	0.44215	0.59589	-0.00795	-10.21	CAD



Market performance H1	Market performance H4	Market performance D1
5.5659 NZD	9.26 NZD	41.47 JPY
4.2436 AUD	3.18 CHF	9.24 CHF
3.0487 JPY	3.01 GBP	-0.57 NZD
0.8298 GBP	1.05 AUD	-2.16 EUR
-1.1428 EUR	-0.74 EUR	-7.71 GBP
-1.5201 CAD	-2.06 CAD	-10.21 CAD
-3.2863 CHF	-2.61 JPY	
-7.4908 USD	-11.84 USD	

Zorox, Portfolio Performance SATORI : -7.4908 3.0487 -3.5343 -1.5202 0.8298 4.2436 -1.1428 5.5659

USD (+) -7.4908  
 JPY (-) 3.0487  
 CHF (+) -3.5343  
 CAD (+) -1.5202  
 EUR (+) -1.1428  
 GBP (+) 0.8298  
 AUD (+) 4.2436  
 NZD (+) 5.5659

Zorox, Portfolio Performance SATORI : -10.5395

