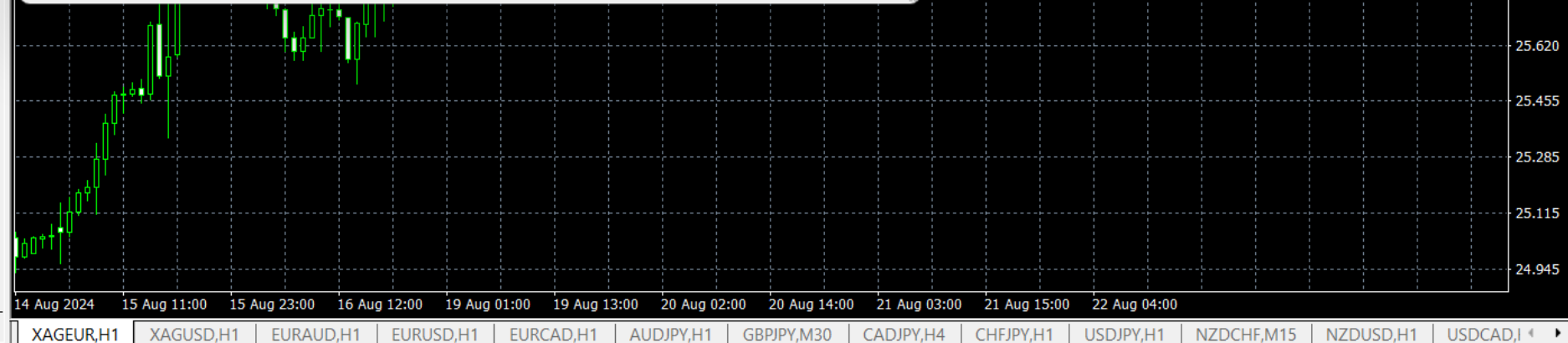
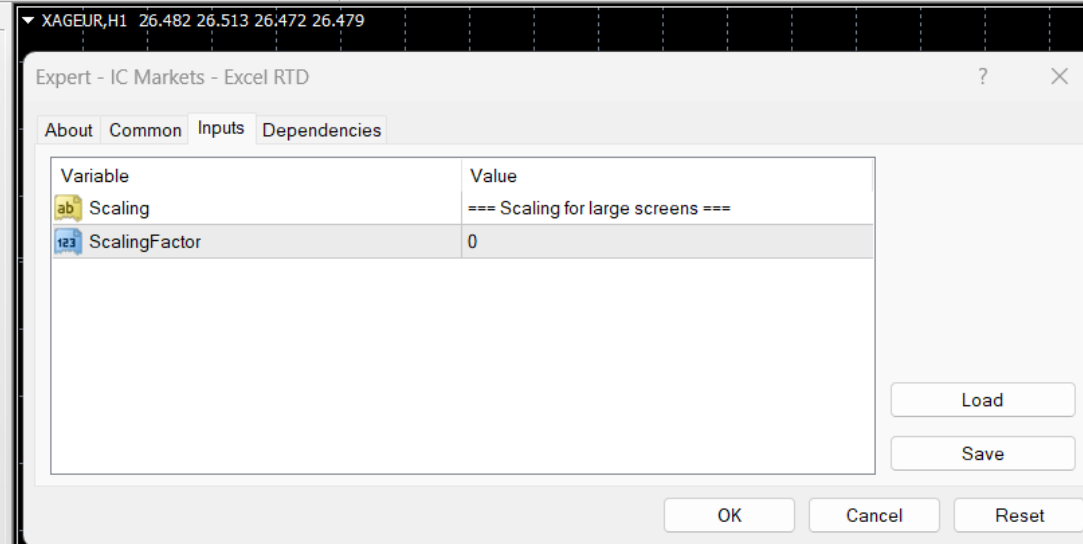
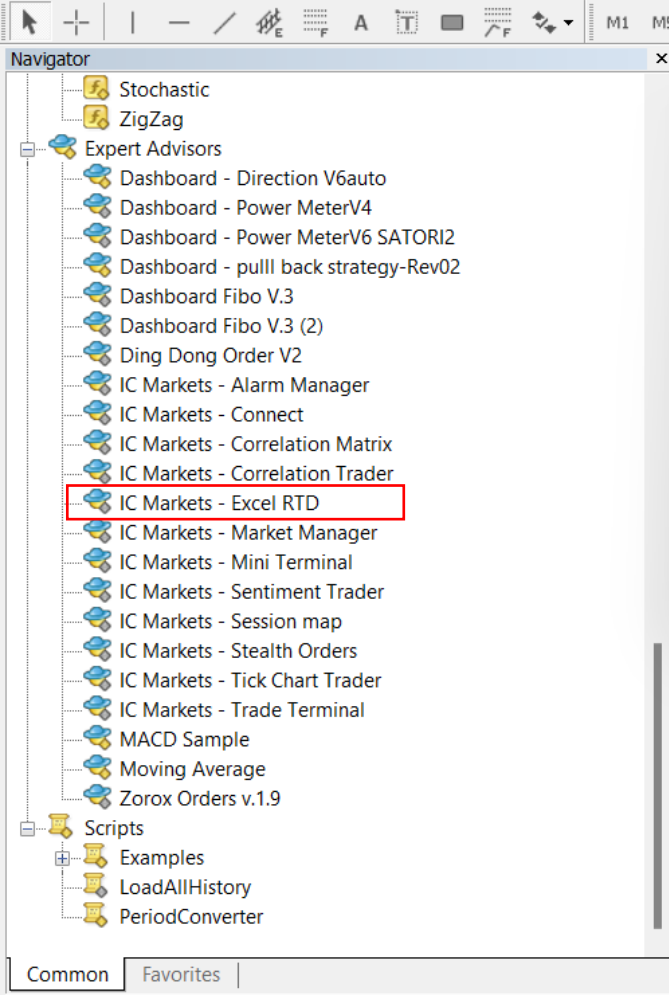
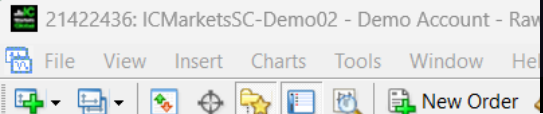
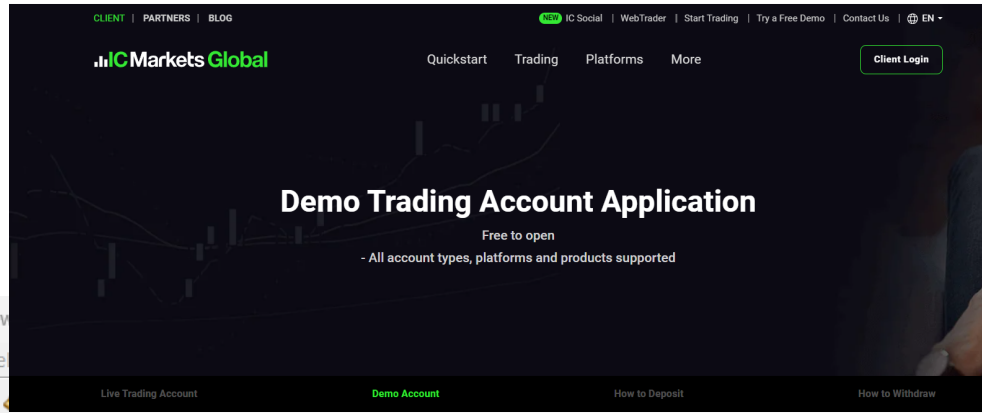


S.A.T.O.R.I

By Prof. Dr. Macro

- 1) Open Demo Acc
IC market only
- 2) Installed EA
"RTD"





- IC Markets (SC) MT4
 - Accounts
 - ICMarketsSC-Demo02
 - 21422436
 - Indicators
 - Trend
 - Oscillators
 - Volumes
 - Bill Williams
 - Examples
 - ! Ichimoku(mtf + alerts + lb + btn)
 - #Signal Bars ff 2023
 - 3x ma (cross+ribbon)
 - Accelerator
 - Accumulation
 - Alligator
 - Alternative_price_m1.1_(Chikou_Span)
 - ATR
 - Awesome
 - Bands
 - Bears
 - Bulls
 - CCI
 - Currency Strength Giraia 28 pairs TRO MODIFIED (1)
 - Custom Moving Averages
 - DX_CMZ-Rev01
 - FerruFx_Multi_info+_light_chart_v1.4 (week)
 - HeatMapModokiV1
 - Heiken Ashi
 - IC Markets Bar Changer
 - IC Markets Candle Countdown
 - IC Markets Chart Group
 - IC Markets Chart-In-Chart
 - IC Markets Donchian
 - IC Markets Freehand Drawing
 - IC Markets Gravity

Table Tools SATORI 28_H1_H4_D1 - Excel (Product Activation Failed)

File Home Insert Page Layout Formulas Data Review View Help Acrobat Table Design Tell me what you want to do

Clipboard: Paste, Copy, Format Painter

Font: Calibri, 10, Bold, Italic, Underline, Text Color, Background Color

Alignment: Wrap Text, Merge & Center

Number: Number, Currency, Percentage, Thousand Separator, Negative Red, Zero as Zero

Styles: Conditional Formatting, Format as Table, Cell Styles, Insert

C2 =RTD("fxbluelabs.excelrtd", "21422436", "@bh,AUDUSD,h1,close,0")

	A	B	AUDUSD	AUDNZD	AUDJPY	AUDCHF	AUDCAD	EURUSD	EURCAD	EURGBP	EURCHF	EURJPY	EURAUD
2	8/22/2024 19:15	LAST PRICE	0.67275	1.09415	98.290	0.57354	0.91113	1.11113	1.51113	0.84954	0.94916	162.671	1.65504
3	previous 1		0.67308							0.84941	0.94881	162.589	1.65460
4	previous 2		0.67366							0.84946	0.94894	162.458	1.65443
5	previous 3		0.67400							0.84877	0.94798	162.198	1.65275
6	previous 4		0.67460							0.84972	0.94848	162.276	1.65172
7	previous 5		0.67485							0.85035	0.94683	161.761	1.65028
8	previous 6		0.67409							0.85162	0.94868	162.091	1.65400
9	previous 7		0.67388							0.85172	0.94875	161.870	1.65355
10	previous 8		0.67353							0.85172	0.94875	161.729	1.65444
11	previous 9		0.67325							0.85165	0.94874	161.894	1.65538
12	previous 10		0.67306							0.85162	0.94935	162.069	1.65557
13	previous 11		0.67383							0.85159	0.94969	162.263	1.65370
14	previous 12		0.67435							0.85163	0.94954	162.010	1.65309
15	previous 13		0.67494	1.09530	97.951	0.57448	0.91677	1.11552	1.51518	0.85203	0.94945	161.886	1.65275
16	previous 14		0.67506	1.09544	97.810	0.57435	0.91705	1.11564	1.51555	0.85208	0.94921	161.644	1.65264
17	previous 15		0.67419	1.09496	97.871	0.57386	0.91633	1.11477	1.51517	0.85148	0.94915	161.840	1.65305
18	previous 16		0.67441	1.09536	97.973	0.57435	0.91671	1.11499	1.51560	0.85175	0.94961	161.981	1.65321
19	previous 17		0.67423	1.09473	97.772	0.57409	0.91670	1.11518	1.51620	0.85191	0.94952	161.709	1.65396
20	previous 18		0.67520	1.09457	97.731	0.57420	0.91714	1.11618	1.51613	0.85161	0.94922	161.561	1.65311
21	previous 19		0.67455	1.09424	97.855	0.57389	0.91667	1.11557	1.51600	0.85174	0.94908	161.832	1.65378
22	previous 20		0.67415	1.09507	97.882	0.57392	0.91615	1.11465	1.51476	0.85157	0.94891	161.836	1.65338
23	previous 21		0.67496	1.09553	98.008	0.57477	0.91678	1.11423	1.51339	0.85209	0.94883	161.786	1.65078
24	previous 22		0.67384	1.09607	98.143	0.57500	0.91636	1.11248	1.51282	0.85181	0.94926	162.024	1.65091
25	previous 23		0.67415	1.09683	98.252	0.57548	0.91667	1.11146	1.51128	0.85173	0.94879	161.981	1.64864
26	previous 24		0.67431	1.09714	98.298	0.57585	0.91692	1.11250	1.51278	0.85279	0.95007	162.174	1.64984
27	previous 25		0.67386	1.09737	98.426	0.57622	0.91642	1.11148	1.51156	0.85289	0.95042	162.343	1.64941
28	previous 26		0.67422	1.09764	98.553	0.57678	0.91693	1.11249	1.51295	0.85306	0.95169	162.617	1.65000
29	previous 27		0.67379	1.09739	98.451	0.57618	0.91691	1.11171	1.51284	0.85338	0.95066	162.439	1.64993
30			0.0	0.0	0.0	0.0	0.0	0.0	0.0	0.0	0.0	0.0	0.0
31			0.0	0.0	0.0	0.0	0.0	0.0	0.0	0.0	0.0	0.0	0.0

Find and Replace

Find what: 21422436

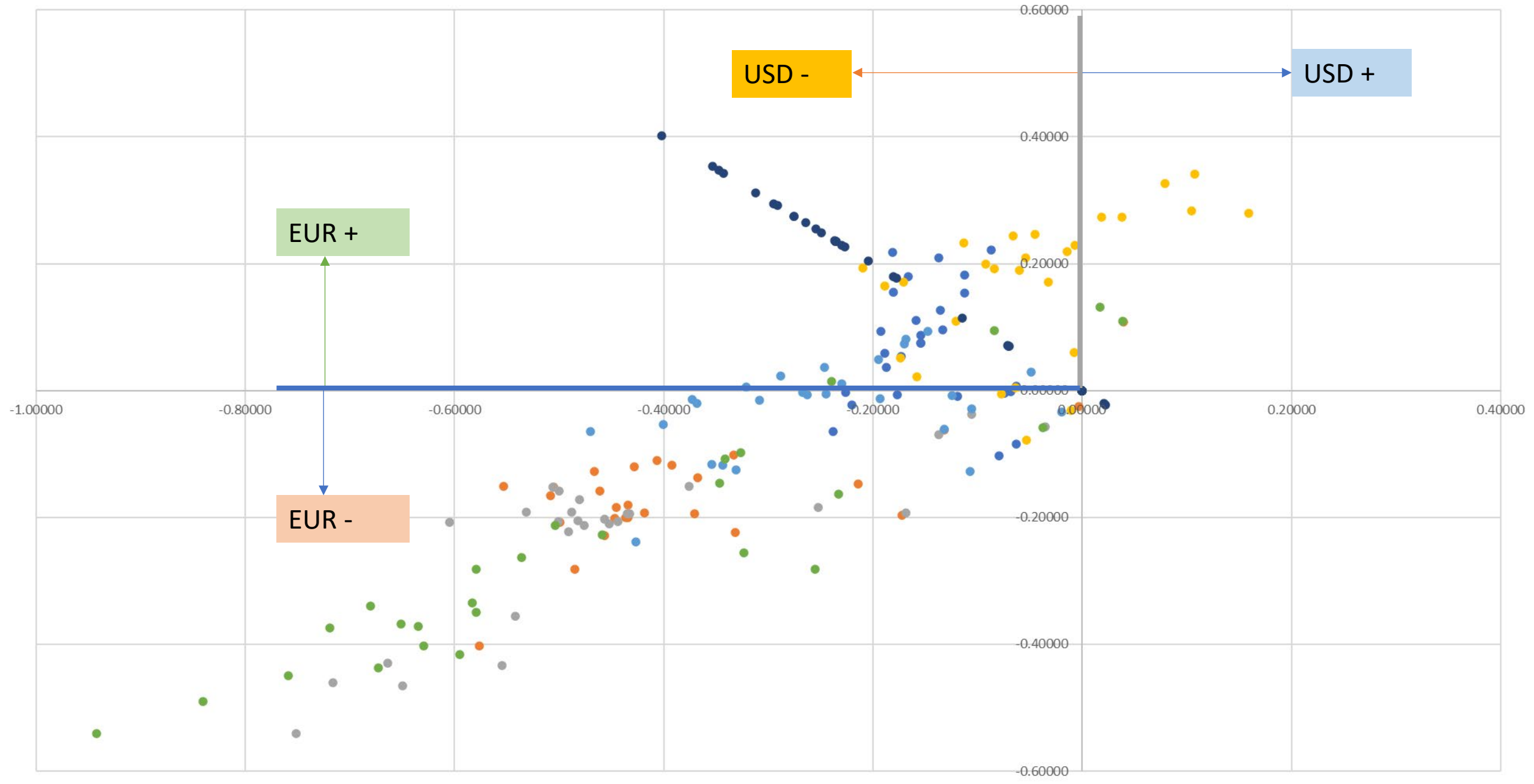
Replace with: xxxxxxxx

Options >>

Replace All Replace Find All Find Next Close

In put Acc. Number
Replace all

EU/UE



EUR +

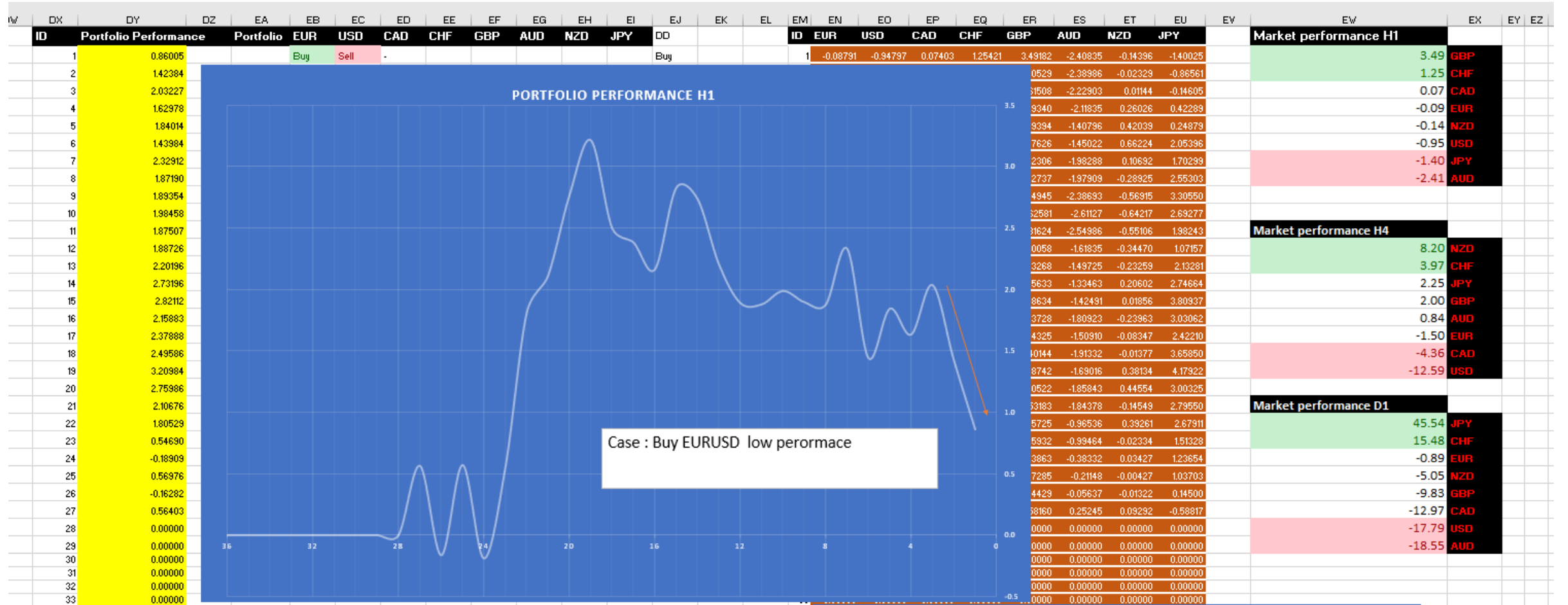
EUR -

USD -

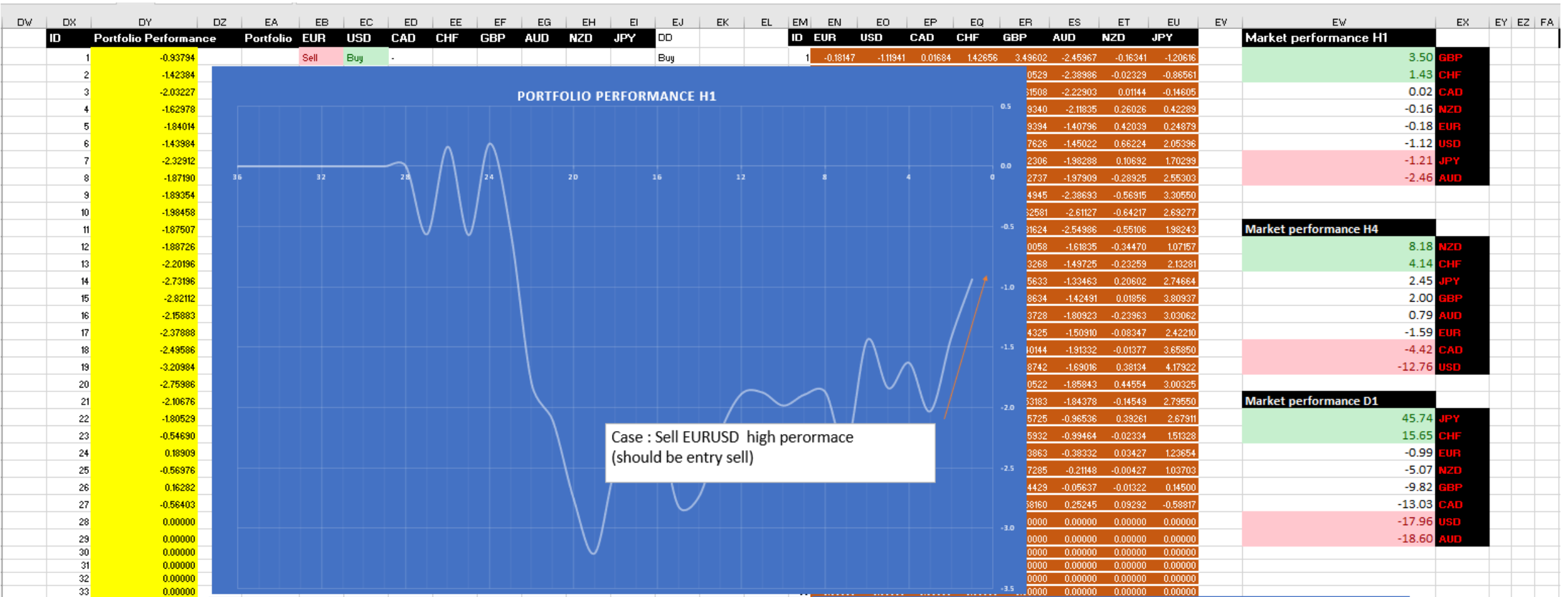
USD +

● EURCAD ● EURCHF ● EURGBP ● EURAUD ● EURNZD ● EURJPY ● EU

☒ Case: Buy



Case: Sell



Thank you for Dr. Macro for made the S.A.T.O.R.I System

