



Quotes

be consistent, focus on the process, not the outcome.

fall seven times, stand up eight.

and sometime in life, to lose is also to win.

If only we started younger, then we would have been so much better...If we know back then what we did now, things would change. Here's the thing. Today is the youngest you will ever be again and you still have enough time to become all you wanted to be in life. The best time to plant a tree may have been 20 years ago, but the second best time is right now.

The Basic

Support and Resistance

Candlestick Pattern

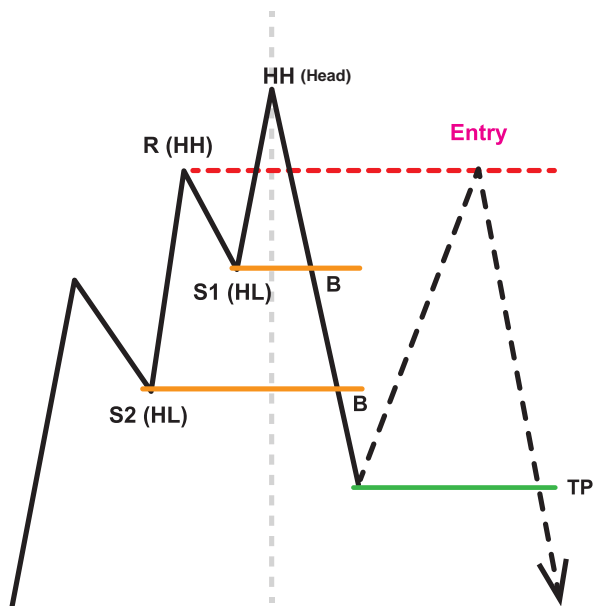
- Bullish & Bearish Engulfing
- Morning & Evening Star

Supply and Demand

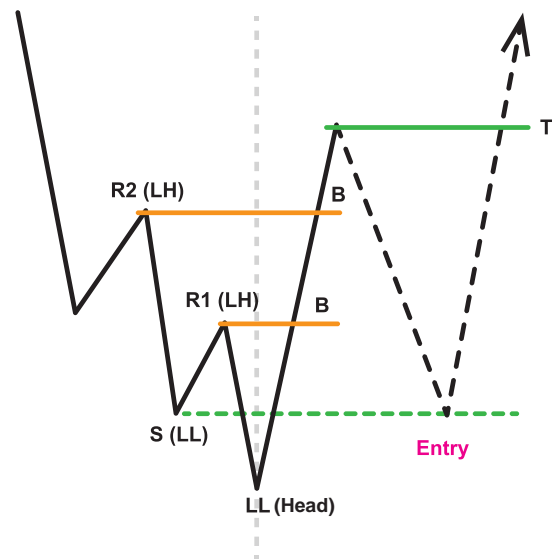
- Drop Base Rally (DBR)
- Rally Base Drop (RBD)
- Drop Base Drop (DBD)
- Rally Base Rally (RBR)

Please be familiar with the basic listed on top is enough, because we will need it as confluence, entry zone and confirmation. Yes it is very essential

~~The Secret Pattern~~ The Snail Pattern



SP Sell



SP Buy

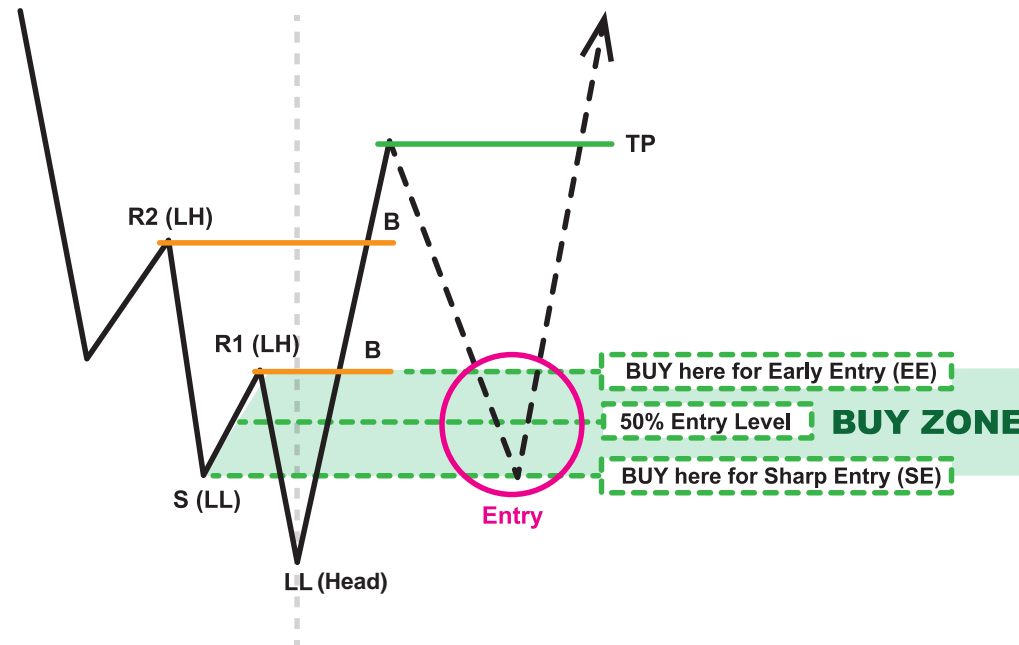
This pattern will always present in the market and keep repeating. It can be use in any instrument or any pairs as long as there candlestick chart. For this to happen, first it need to/must have **2 breakout** previous support resistance higher low or lower high of candlestick **body closed** only.

The reason to entry on SP is to minimize big float or to get zero float when entry the market.

Disclaimer: This pattern is not holygrail. Sometime market will completely ignore SP zone. It only give high winrate if use correctly. SP zone is only use for entry zone base on HTF signal & Setup Confirmation.

The weakness for using this is pattern is we might miss the trade when the price only taking Early Entry, sometime it might overshoot our PO on Early Entry and hit sl before the price follow your analysis.

Secret Pattern Version. 1 (SPv1/SP Buy)



SPv1 Buy

SP Buy SOP:

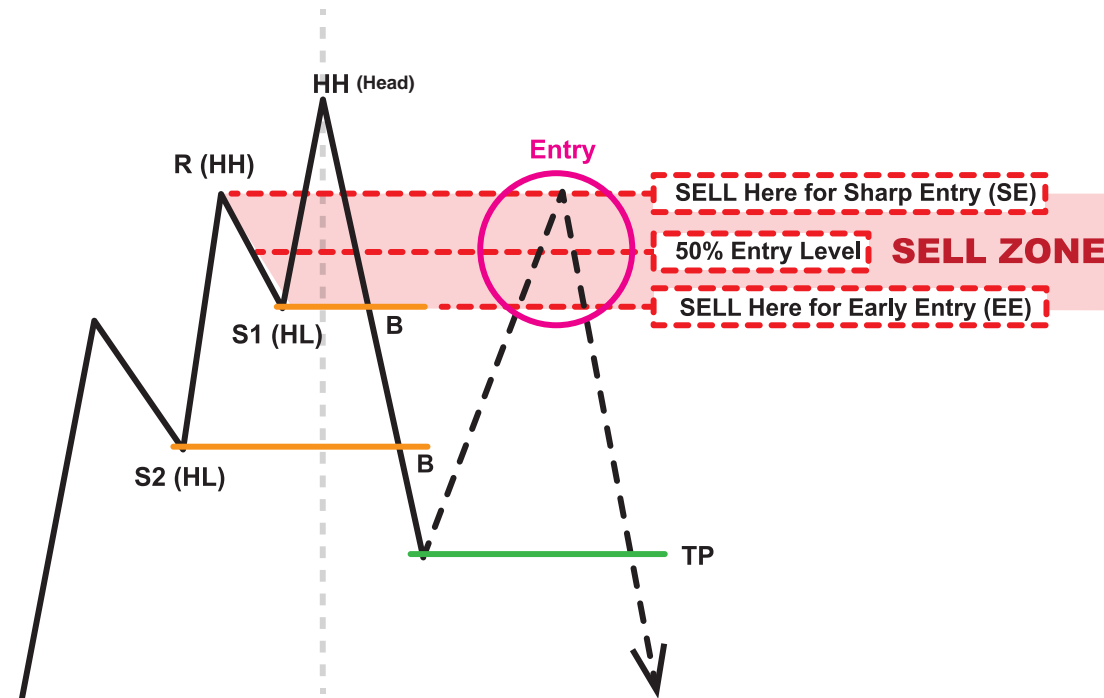
1. Can happen on **market trend reversal and trending market**
2. Must **break 2 Resistance CS Body** only (If there clean breakout of 2 Resistance the better)
3. Marking 1st breakout **R1(LH) highest CS shadow to S(LL) CS body closed** then use fibo to find the 50% Entry Level between R1(LH) Shadow to S(LL) CS Body Close
4. Once the price make pullback and hit buy zone, TP1 should be at the new HH , if break TP1 find the next SNR as your TP 2 and so on

Risk & Reward:

1. You can use 1:2 Risk Reward Ratio. Example: Your entry is on EE to TP1 (HH) is 100pip, your risk would be 50pips
2. Or you can hold position as long as there no CS close below LL (Head) and cutloss once there CS able to break and close below it.

Secret Pattern Version. 1 (SPv1/SP Sell)

SPv1 Sell



SP Sell SOP:

1. Only on **market trend reversal and trending market**
2. Must **break 2 Support CS Body** only (If there clean breakout of 2 Support the better)
3. Marking 1st breakout **S1(HL) Lowest CS shadow** to **R(HH) CS body closed** then use fibo to find the 50% Entry Level between S1(HL) Shadow to R(HH) CS body close
4. Once the price make pullback and hit sell zone, TP1 should be at the new LL , if break TP1 find the next SNR as your TP 2 and so on

Risk & Reward:

1. You can use 1:2 Risk Reward Ratio. Example: Your entry is on EE to TP1 (LL) is 100pip, your risk would be 50pips
2. You can hold position as long as there no CS close above HH (Head) and cutloss once there CS able to break and close above it.

SP Buy Example 1



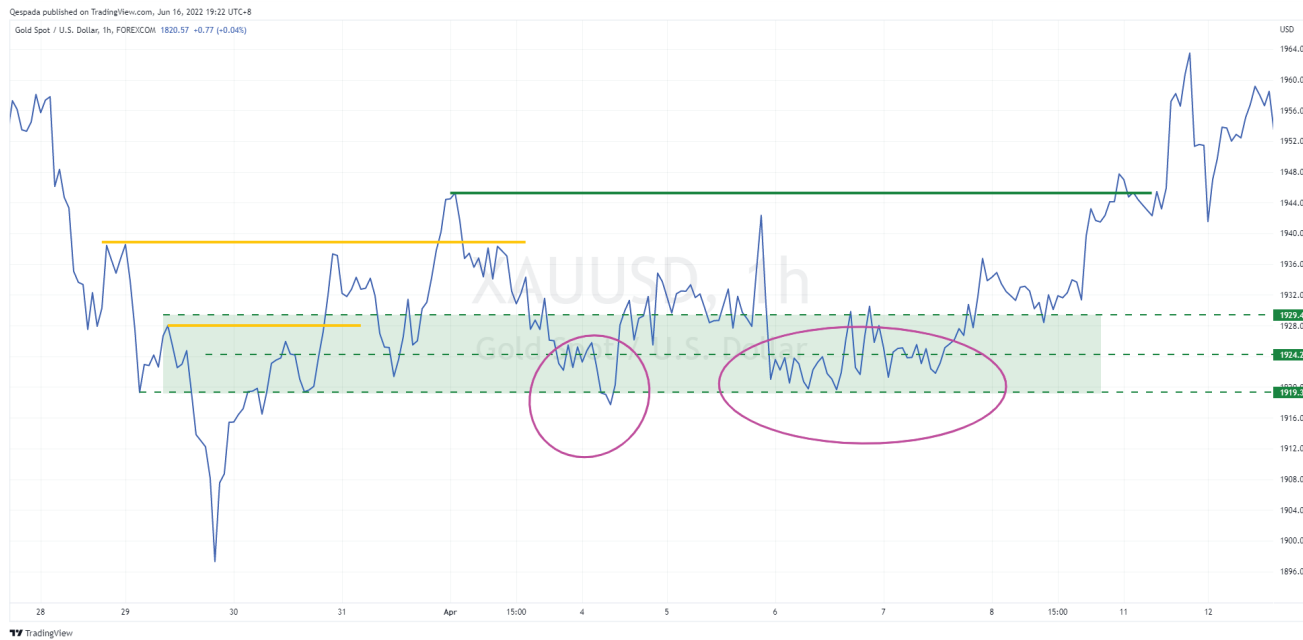
SP Buy Example 2



SP Buy Example 2.5 Different Zone



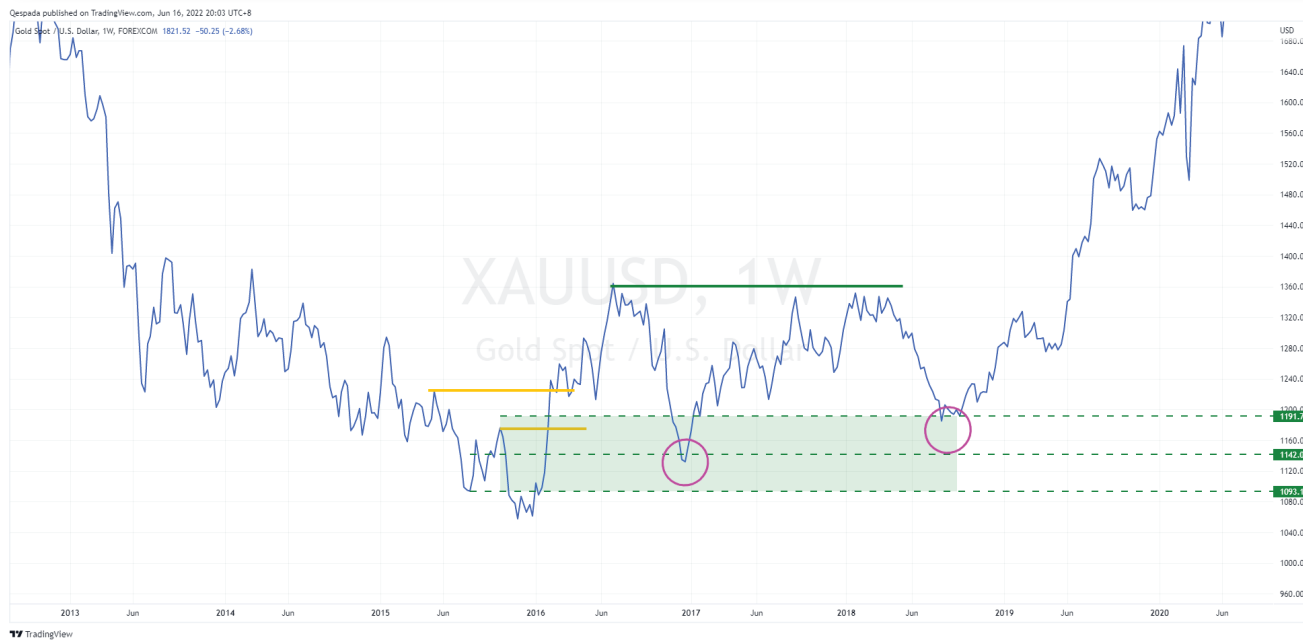
SP Buy Example 3



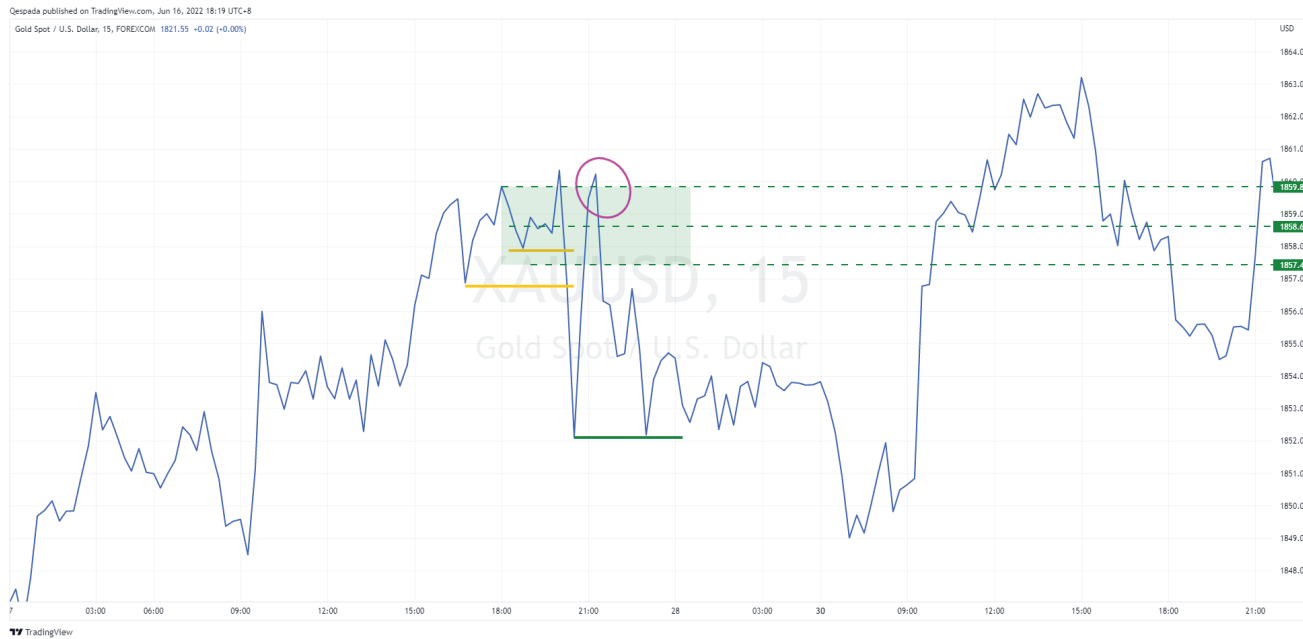
SP Buy Example 4



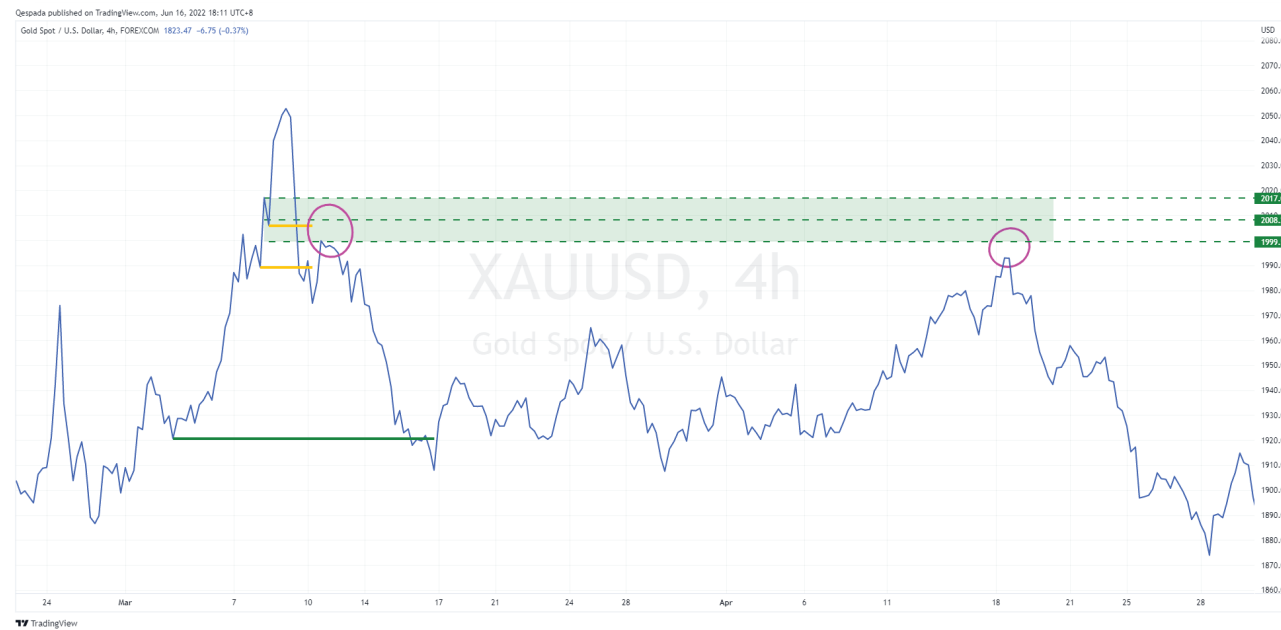
SP Buy Example 5



SP Sell Example 1



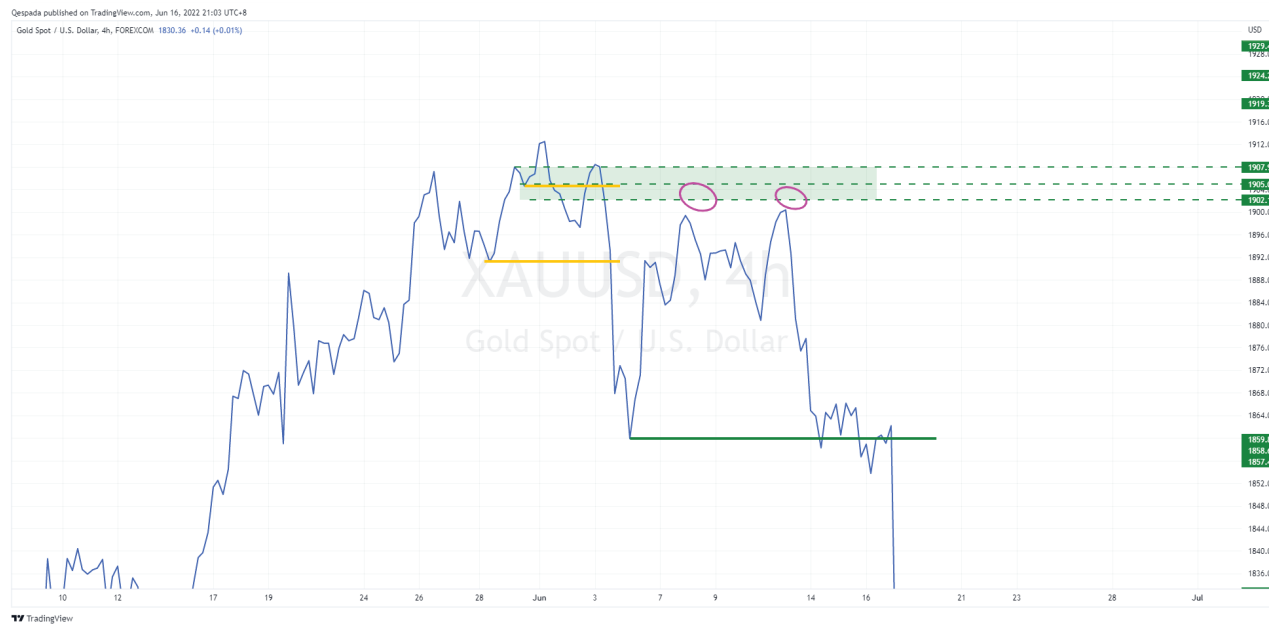
SP Sell Example 2



SP Sell Example 3



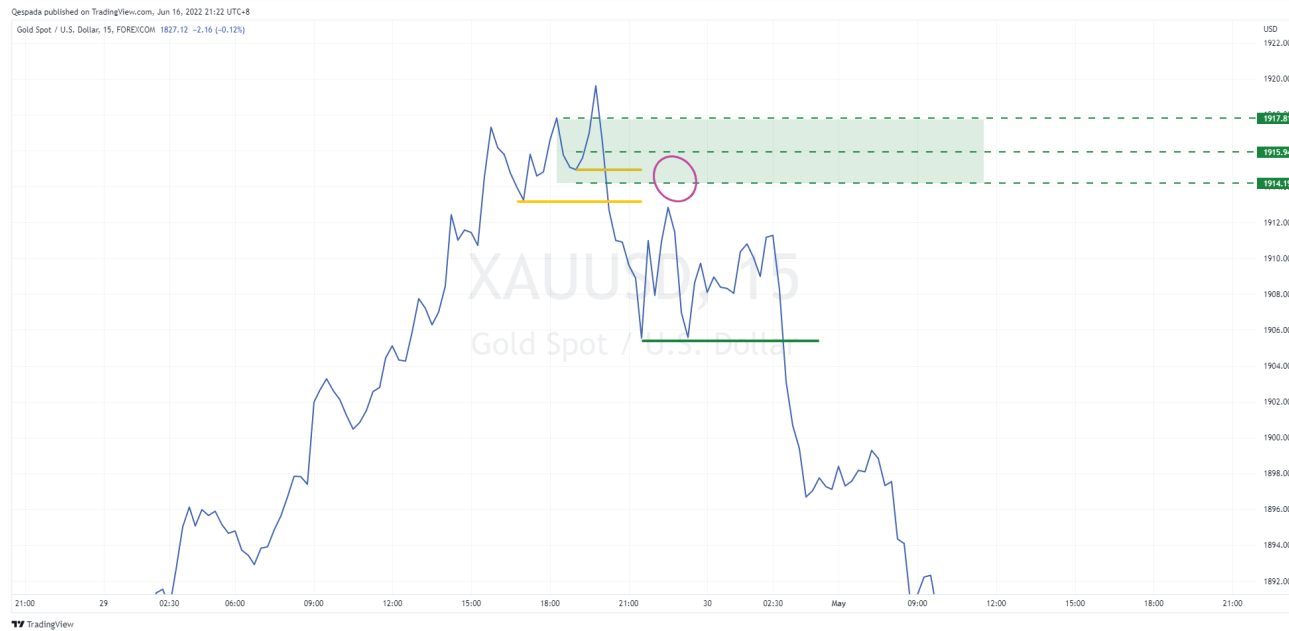
SP Sell Example 4



SP Sell Example 5



Sell Example 6



SP Buy Signal Setup Entry

Signal Setup : I will use SNR, SND, CS Pattern, Chart Pattern, Trendline to look for buy and selling zone.

Entry : With SP, we will able to find the best zone as entry point inside the buying/selling zone

Deduction: When we have engulfing zone, we need to look for SP in the engulfing zone to lower our risk and get higher reward. Few example on next page for better explanation

Full setup SP Buy 1



H4 has strong DBR
Next turn to 3 time lower tf
look for previous SP in the
candlestick zone.



There lowest SP that is still
fresh and not yet been touch.
Marking the SP Entry zone
as a point of entry and wait
for price making a pullback
to the zone.

Full setup SP Buy 1 Result

Qespada published on TradingView.com, Jul 04, 2022 12:31 UTC-8

Gold Spot / U.S. Dollar, 5, FOREXCOM O1811.90 H1811.99 L1811.40 C1811.41 -0.49 (-0.03%)



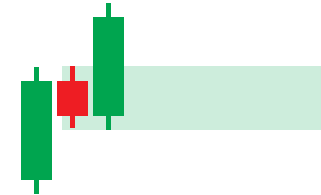
Price able to hit SP Buy on M5 and instantly bull rally around 200pips from Sharp Entry point.

Full setup SP Buy 2



Here another backtest on live market

We can see there RBR. Mark the RBR Zone and change to lower TF to look for SP inside RBR Candlestick zone.



Here we can see there SP Zone. At the same time there also Hidden SP zone.

Hidden SP Zone. Note available on next few page



Full setup SP Buy 2 Result

Qespada published on TradingView.com, Jul 04, 2022 10:17 UTC-8

Gold Spot / U.S. Dollar, 1, FOREXCOM O1811.38 H1814.32 L1811.21 C1814.09 +2.71 (+0.15%)



Price actually overshoot SP zone on M1 but as long as H1 Candle stick does not close below the zone, we can still hold our entry position.

Price overshoot to take Hidden SP zone which is lower and sharper than SPv1 Zone and price flew around 78+Pips from Hidden SP

Full setup SP Buy 2 Extra



At the same time, always look for previous chart history. Sometime there a fresh setup that has not yet been touch by the price.

Example price spike just to take Hidden SP order on M5.

Full setup SP Buy 3

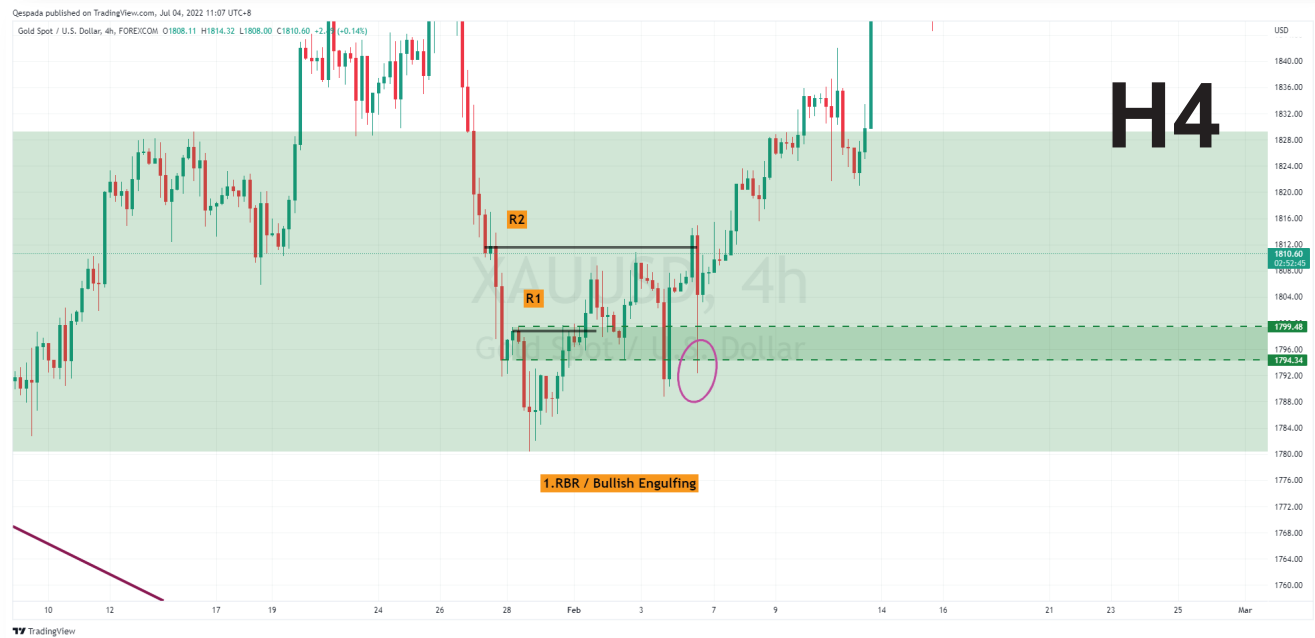


Monthly TF Example 1

1. RBR / Bullish Engulfing

Since Monthly CS zone is big, use body to shadow as your safer zone.

Change to 3 timeframe lower to look for previous SP in the candlestick



On H4 we can see there a previous SP zone that has been touch 1st time.

The zone still can be use for future entry when price make a pullback to same zone again as long as there no CS able to break the RBR/Engulfing Zone on Monthly TF

Full setup SP Buy 3 Result



From the first touch on previous SP, price shoot strong bull rally just from H4 SP.

Price then make 2nd touch on the previous SP for another bull rally.

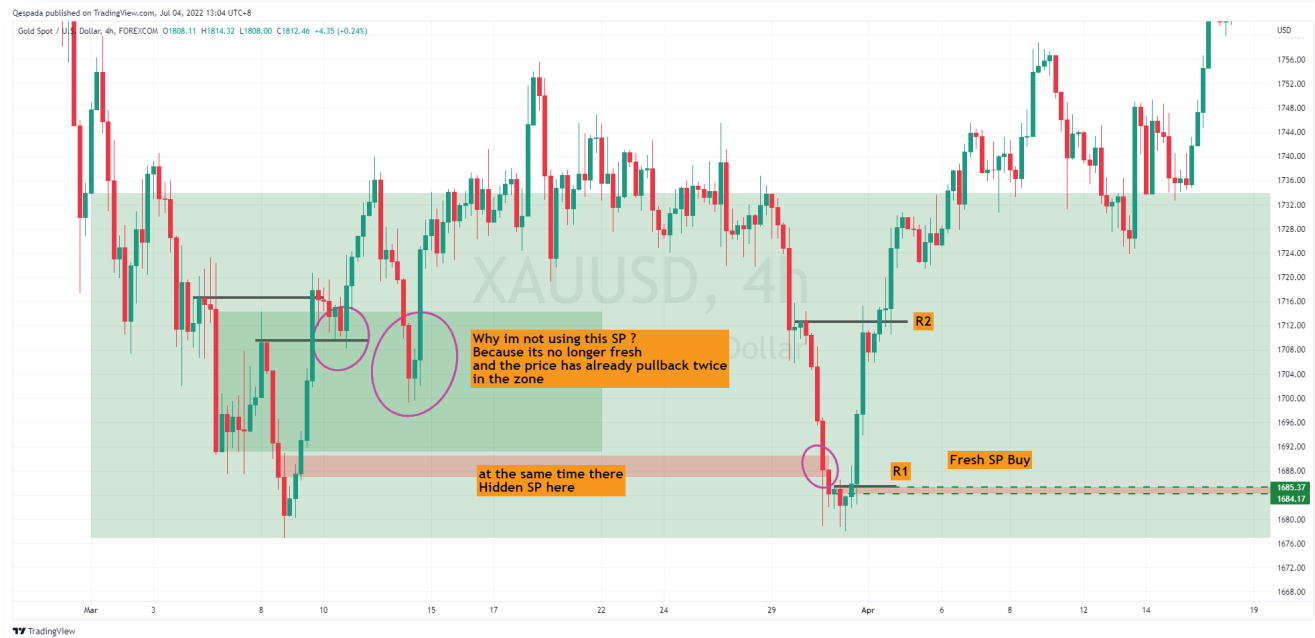


At the sametime, price also making new SP Zone in the Monthly CS zone which can be use as fresh entry point

Full setup SP Buy 3.5



2. Bullish Engulfing zone and SP on H4



Fresh SP is always better than old SP that has make many pullback in the zone.

Full setup SP Buy 3.5 Result

Qespada published on TradingView.com, Jul 04, 2022 13:10 UTC-8

Gold Spot / U.S. Dollar, 4h, FOREXCOM O1808.11 H1814.32 L1808.00 C1812.82 +4.71 (+0.26%)



Price might overshoot because of lower TF SP on H1 or M15 but still leaving its shadow after taking buy order from the SP Zone.

Full setup SP Sell 1



When there Signal and Setup on HTF, go to 3 lower TF look for SP Zone.

Example:
D1 Bearish Engulfing
M30/M15 SP Sell zone



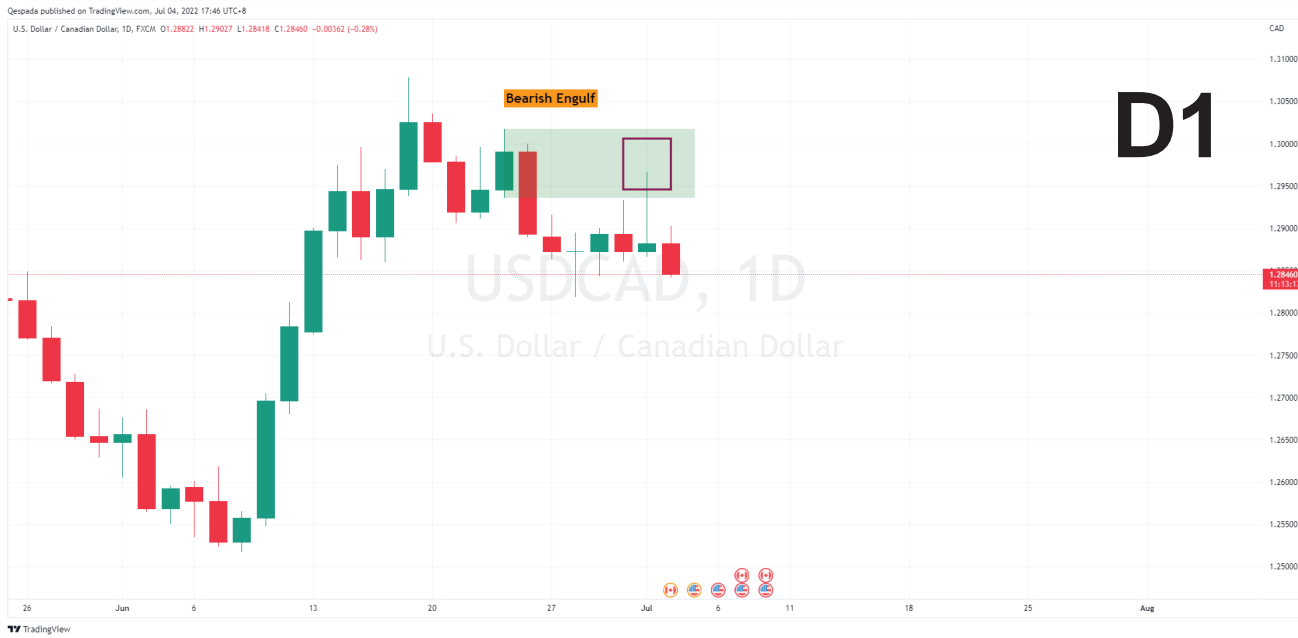
Full setup SP Sell 1 Result



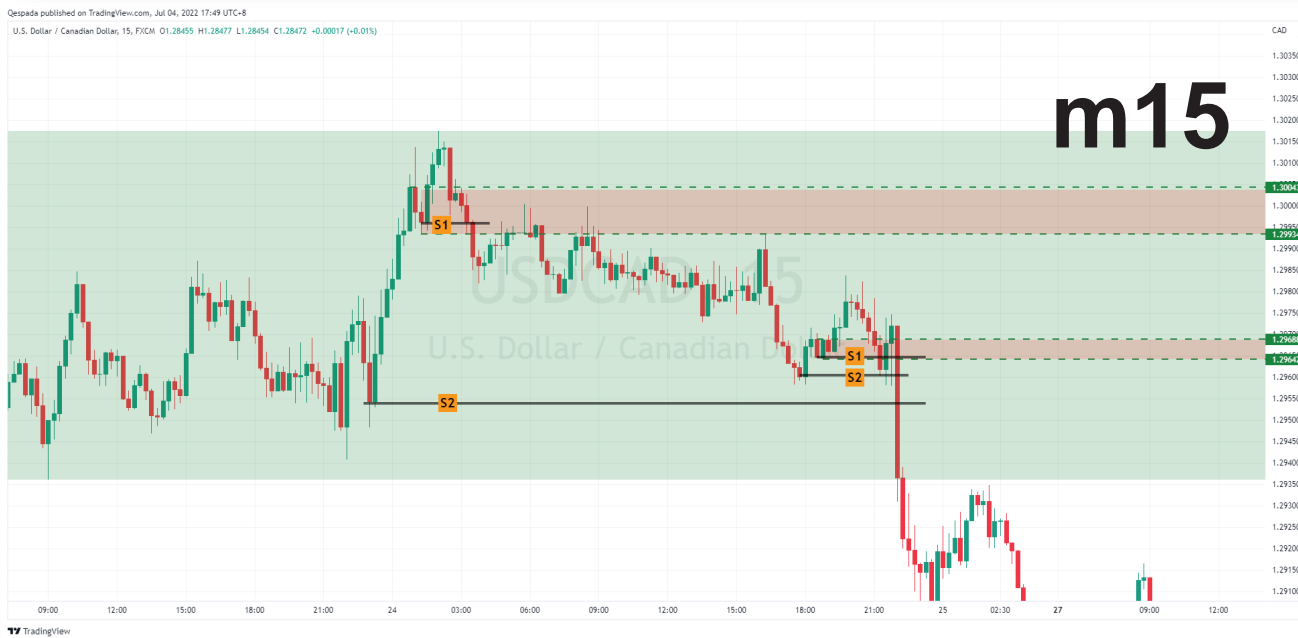
Extra Tips on trying to get sharp entry zero floating:

When price in SP zone, look for new SP zone in M1 TF (Lowest TF). Everytime there SP in M1 just entry as long as HTF Signal and Setup CS has not yet been broken down, it is still valid

Full setup SPsell 2



Lets try on currency pair.
USD/CAD
Daily has Bearish Engulfing



Another tips is price will
always look for nearest fresh
sp. We can see here there 2
sp, higher & lower sp still
fresh.

Price will only look for higher
SP if it break the lower SP
Zone

Full setup SP Sell 2 Result

Qespada published on TradingView.com, Jul 04, 2022 17:50 UTC-8

U.S. Dollar / Canadian Dollar, 15, FXCM O1.28455 H1.28489 L1.28454 C1.28479 +0.00024 (+0.02%)

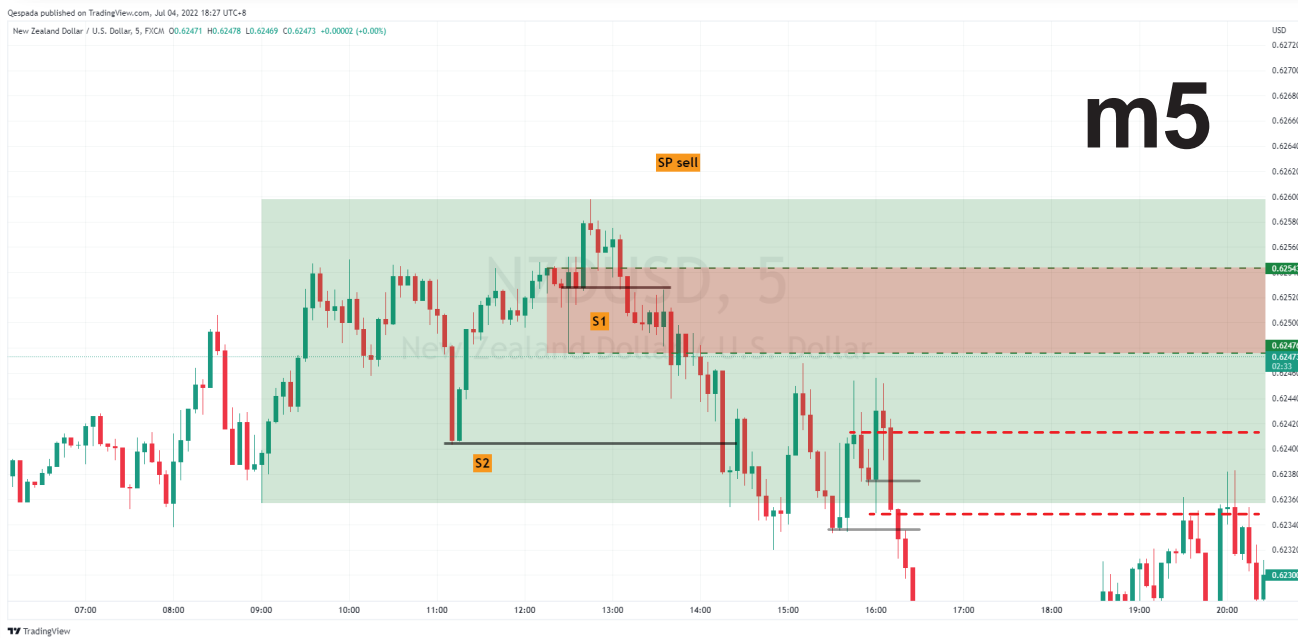


Price only able to reach fresh lower SP

Full setup SP Sell 3



Lets try on currency pair.
NZD/USD
Daily has Bearish Engulfing
other confluence to look for
sell is market downtrend,
break previous LL.



Lower tf by 3 times look for
fresh previous SP.

It is recommended to take
fresh SP.

We can see there actually
lower SP but its no longer
fresh because price has
already make a pullback on
the zone which is not
recommended and risky

Full setup SP Sell 3 Result



Price make 2 time pullback, first on Early Entry (EE) and price plunged around 40pips. Price then making another pullback looking for same zone buy looking for Sharp Entry (SE), again price plunged around 80pips.

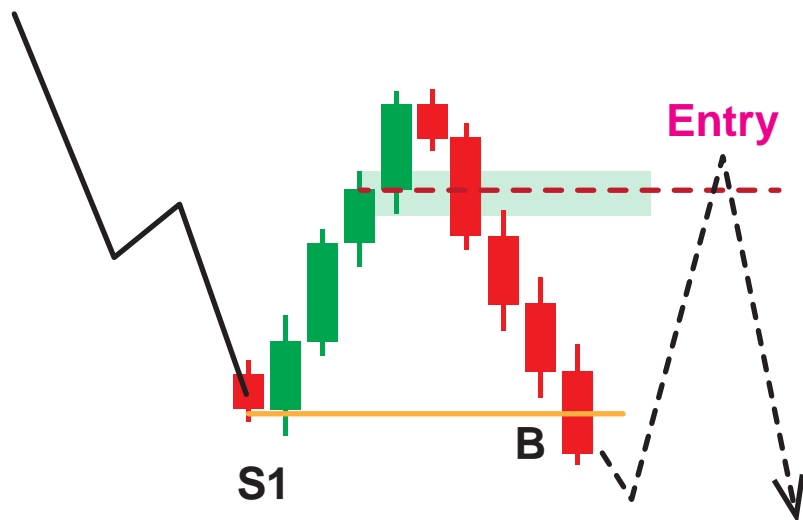
The End of SP

Do a lot of backtest with SP whether on live market or previous market history and make sure to journal it.

Fresh sp will give higher winrate.

Multi timeframe analysis is behind every great setup. Get use to it.

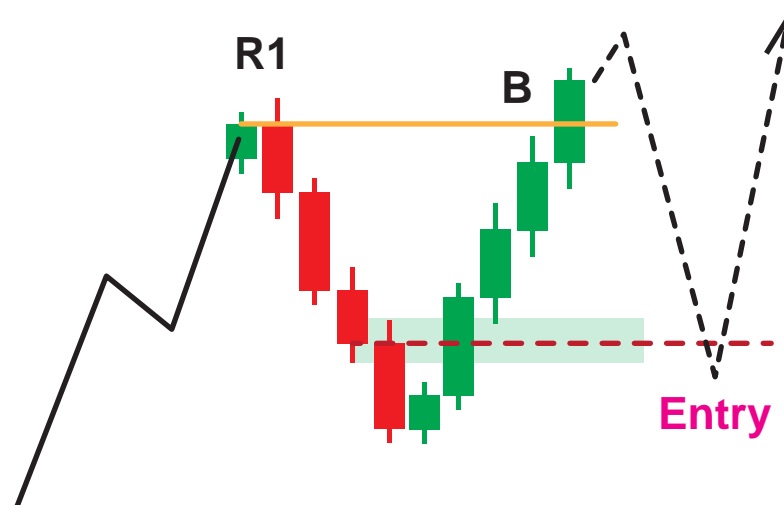
The Hidden SP



Hidden SP Sell

Basic SOP:

1. Minimum 4 Bullish CS
2. Must Break 1 Support (S1)
3. Wait for pullback and entry on 2nd hidden base



Hidden SP Buy

Basic SOP:

1. Minimum 4 Bearish CS
2. Must Break 1 Resistance (R1)
3. Wait for pullback and entry on 2nd hidden base

Hidden SP is actually SP itself in lower TF. Work in any market condition but work the best in trending market. Hidden SP can also be use to assume incoming Double Top/Bottom chart pattern

Hidden SP Sell Example 1



Market has strong bearish impulsive move, we will look for SP sell.

But since there no Support CS throughout the corrective wave/pullback, there no SP because it was hidden in lower TF.



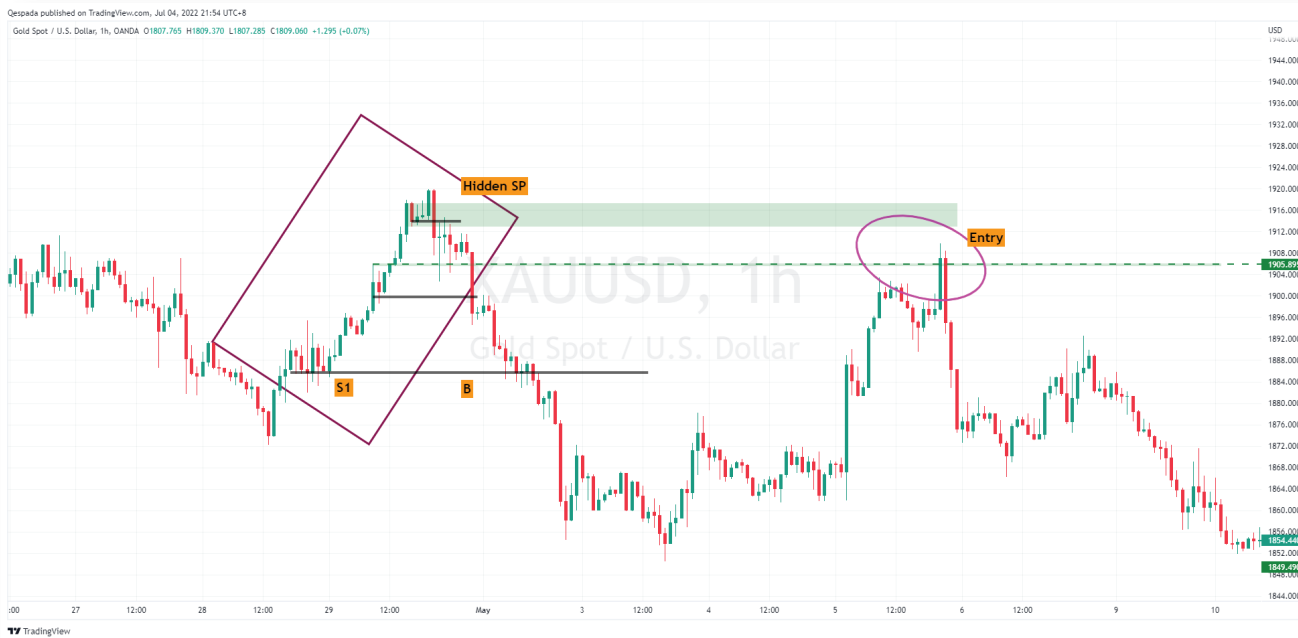
As you can see in lower TF has SP Sell. But we can know in advance SPv1 is forming in lower TF without changing to Lower TF.

Just set your order on Hidden SP base is enough. Because sometime price wont reach higher SP on Lower TF and sometime it does.

Hidden SP Sell Example 2



Down market trend,
Hidden SP.



Price only able to reach HTF
Hidden SP and LTF left
untouch.

Hidden SP Sell Example 3



Daily TF Hidden SP. Please refer to previous page The Hidden SP

“ Hidden SP can also be use to assume incoming Double Top/Bottom chart pattern ”



In LTF there another Hidden SP inside a Hidden SP.

Hidden SP Sell Example 3 Result



In this case the price looking for higher Hidden SP on H4 and forming Double Top



Hidden SP Buy Example 1



From Uptrend Market, there
Hidden SP



in H4 TF, there another
Hidden SP.

The End of Hidden SP

I would like to apologize if there any shortcomings/mistake on my basic note. all the best and trade wisely.

-razoredge22

