

29.8.07

00:34

(b) tp + 78 Pips

4h-macd-System= + 112 Pips

15min





11:42

New Trade

Resistance of the EMA's were passed

Macd shows Round Bottom (very round)

EUR/USD long 1.3622

SL: 1.3602 (-20) below the EMA's and at temporary Support Level

(a) TP: 1.3642 (+20)
previous day EMA's

(b) TP: 1.3664 (+42) SMA 200

as soon as (a) TP taken I will (b) SL +/-0

14:07

(a) TP: + 20 Pips

(b) SL +/-0

14:32

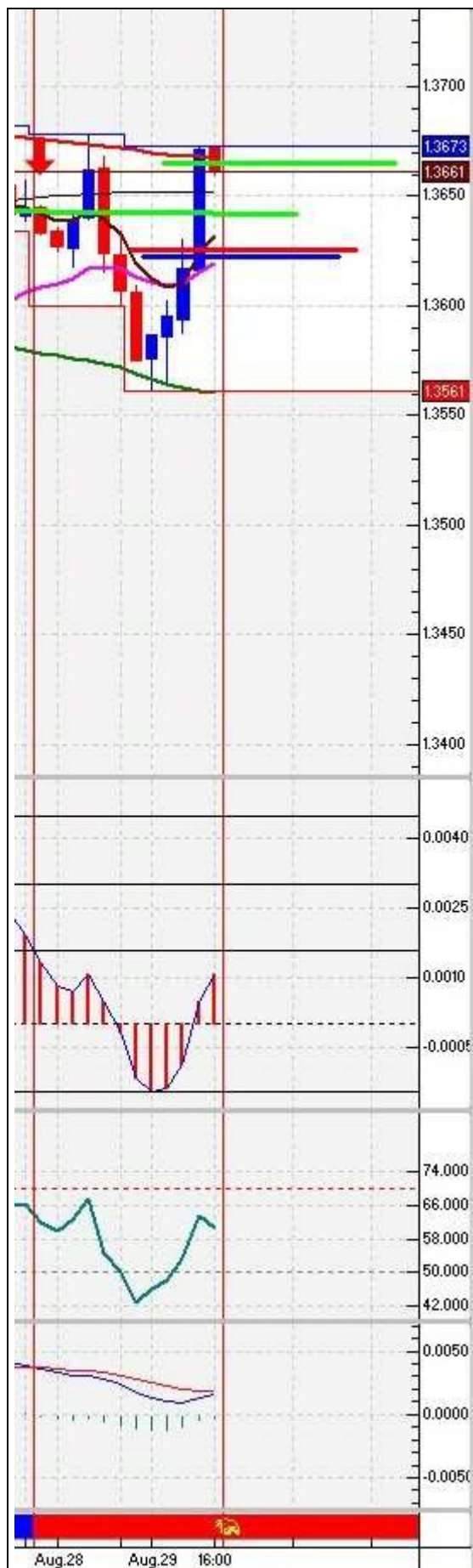
(b) SL 1.3626 (+4) modified.
SMA200 Level on 15min Chart

Actually at + 30

16:08

(b) TP taken = + 42 Pips

4h MACD System = +62 Pips



18:06

Actual Charts at 4h and 15min

