



WADE_FX_SETUPS



MARKET STRUCTURE AND POWERFUL SETUPS

FOREX MARKET PRICE ACTION

CONTENT

1. The Basics

- 1.1. Expansion And Retracement
- 1.2. Fibonacci Retracement
- 1.3. Break In Market Structure
- 1.4. Range High and Range Low
- 1.5. Failure Swing (SMS)

2. Market Structure

- 2.1. Market Structure In Bullish Conditions

3. Liquidity

- 3.1. Liquidity Types
- 3.2. Buy Stops Liquidity (BSL)
- 3.3. What to Focus on (For BSL)
- 3.4. Sell Stops Liquidity (SSL)
- 3.5. What to Focus on (For SSL)
- 3.6. Stop Hunt: Manipulation For Liquidity
- 3.7. High Impact News Events

4. Order Blocks

- 4.1. Bullish Order Block
- 4.2. Bearish Order Block

5. Daily Range Price Action

- 5.1. Sessions
- 5.2. Asian Session
- 5.3. London Session
- 5.4. New York Session
- 5.5. Accumulation, Manipulation And Distribution

6. Powerful Setups

- 6.1. Turtle Soup
- 6.2. SH + BMS + RTO
- 6.3. SMS + BMS + RTO
- 6.4. A.M.D

7. putting everything together

- 7.1. Confluence
- 7.2. HTF analysis, LTF Entries

8. Marked Up Charts



CHAPTER 1: THE BASICS

1. THE BASICS

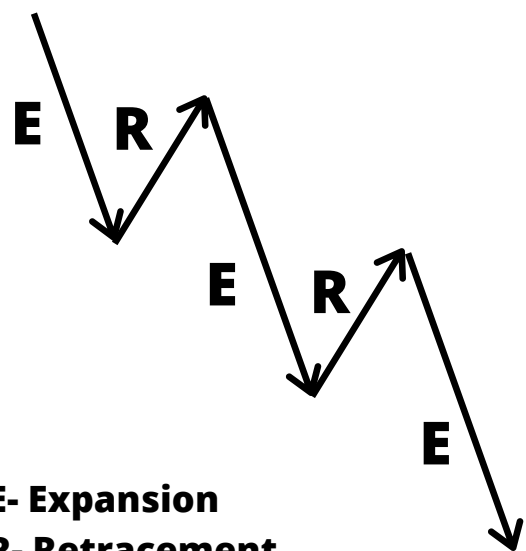
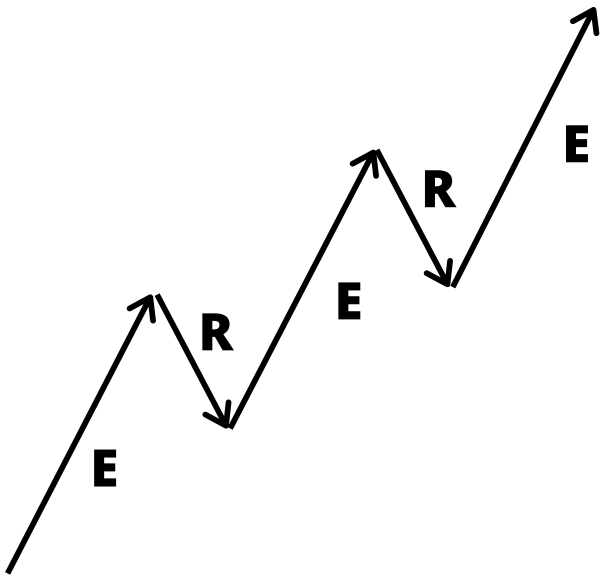
1.1. EXPANSION AND RETRACEMENT

Expansion => occurs when there is an impulse movement towards a direction.

Retracement => is the correction movement after an impulse movement.

UPTREND

DOWNTREND



E- Expansion
R- Retracement



E- Expansion
R- Retracement

1.2. FIBBONACCI RETRACEMENT

USED TO DETERMINE THE END OF THE RETRACTION MOVEMENT, USUALLY THE PRICE RETRACTS TO 50% OR UNTIL OTE (0.62, 0.705, 0.79) BEFORE ANOTHER IMPULSE MOVEMENT OCCURS.

FIBBONACCI RETRACEMENT



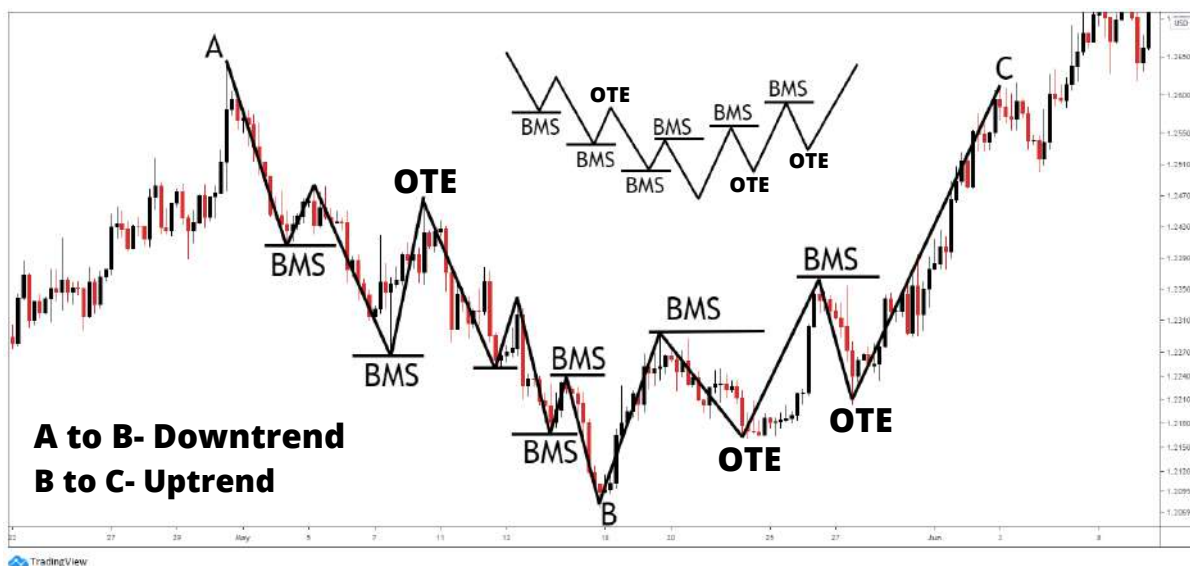
1.3. BMS - BREAK IN MARKET STRUCTURE

BMS occurs when the price closes above / below a swing high/low, generally, every trader should trade in the direction of the Higher Time Frame BMS.

NOTES:

AFTER BMS ALWAYS WAIT FOR RETRACEMENT.

BMS - Break In Market Structure



1.4. Range High and Range Low

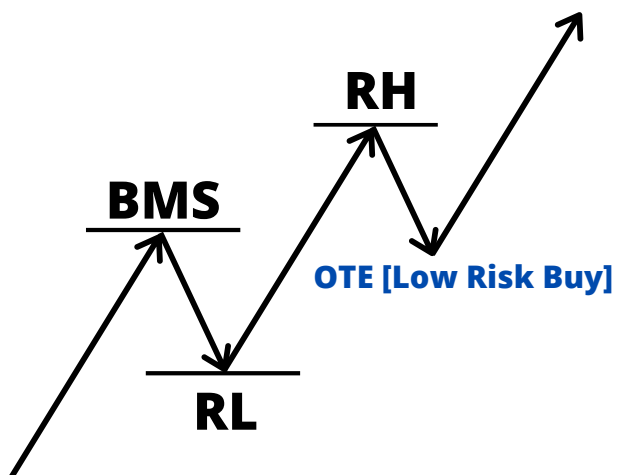
After the BMS there will always be the formation of a new consolidation, that is called RH and RL.

NOTES:

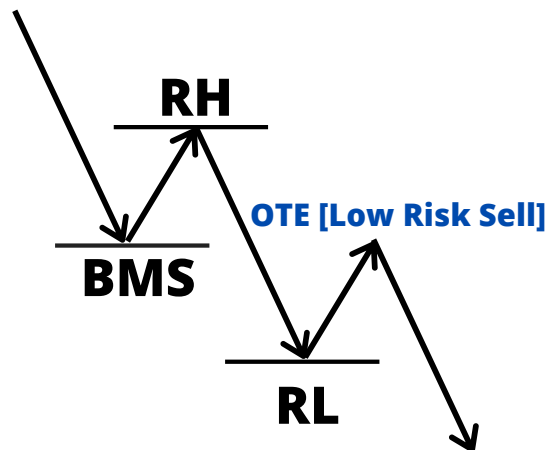
=> Trade in the direction of the BMS

=> After BMS Wait for retracement to 50% OR OTE of Fibonacci levels.

BULLISH



BEARISH



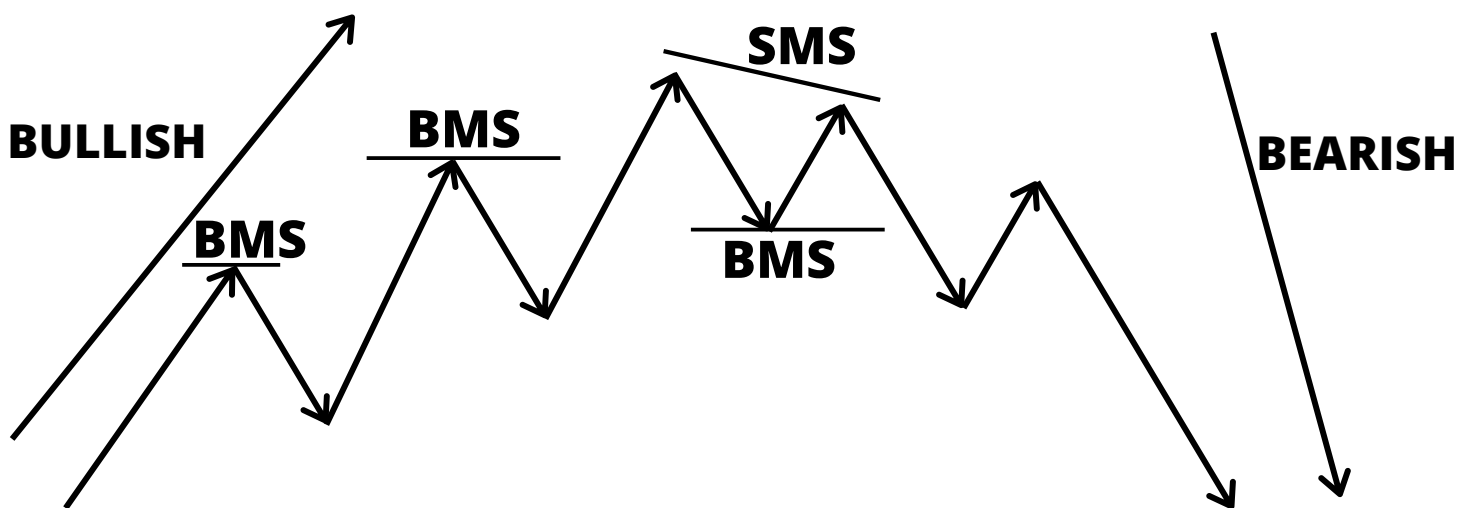
Range High and Range Low



1.5. FAILURE SWING (SMS)

When there is an uptrend market and the price fails to break the last top (Swing High) and breaks the previous bottom (Swing Low), an SMS is considered to have occurred (vice versa for Bearish).

FAILURE SWING (SMS)



FAILURE SWING (SMS)





Chapter 2: MARKET STRUCTURE

2. MARKET STRUCTURE

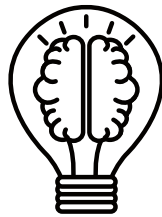
The price can simply be found in one of the 3 phases below:

- 1.In a CONSOLIDATION**
- 2.In an UPTREND**
- 3.In a DOWNTREND**

2.1. Market Structure In Bullish Conditions

[VICE VERSA FOR BEARISH CONDITION]

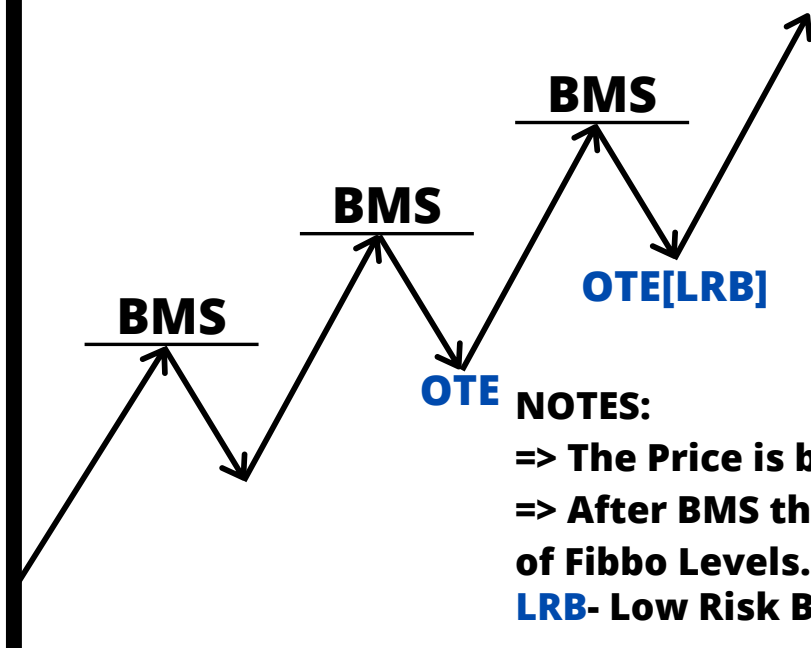
The bullish market is characterized by making Higher Highs and Higher Lows, but this characterization is not enough, it is necessary to say that bullish markets are always breaking swing Highs and respecting swing lows.



The fact that the price has **broken a swing high, indicates that **higher prices** should be expected, so it is negotiated in the **trend in which the market structure was broken.****

2.1. Market Structure In Bullish Conditions

[VICE VERSA FOR BEARISH CONDITIONS]



NOTES:

=> The Price is breaking the highs only

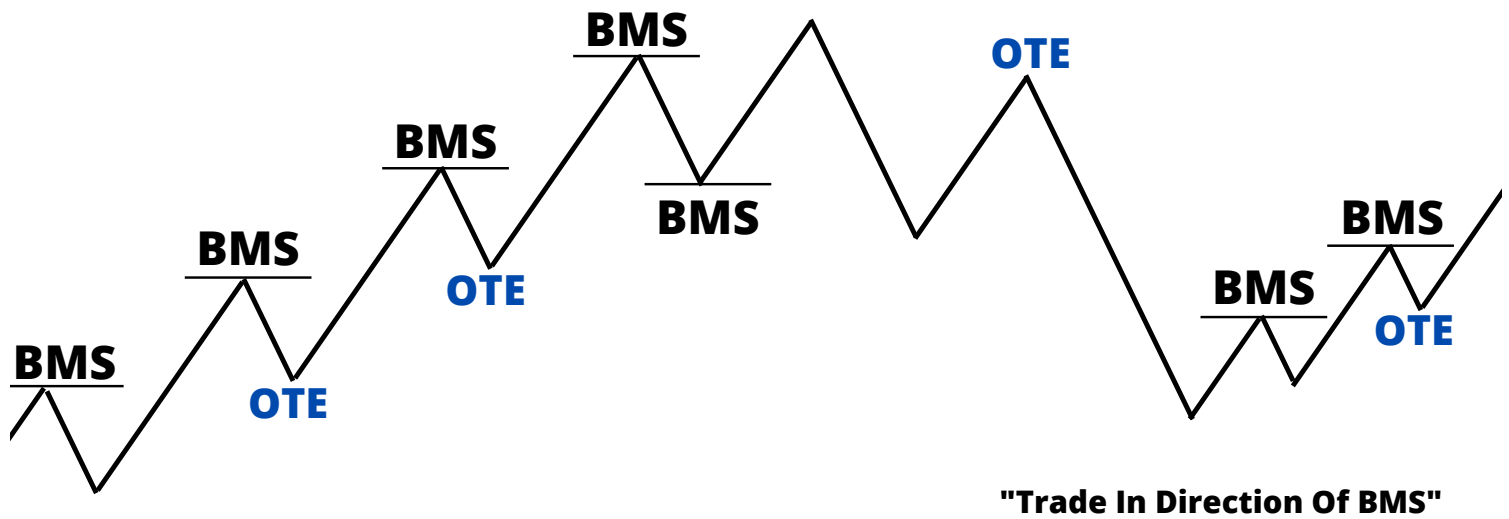
=> After BMS the price Retract to 50%/OTE of Fibbo Levels.

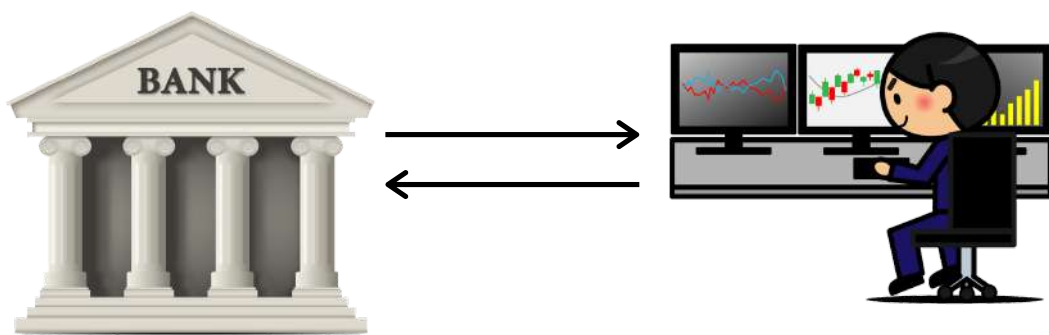
LRB- Low Risk Buy

2.1. Market Structure In Bullish Conditions [VICE VERSA FOR BEARISH CONDITIONS]



MARKET STRUCTURE





Chapter 3: **LIQUIDITY**

3. LIQUIDITY

The FOREX market is a zero sum game, which means that for a trader/institution to buy/sell 1 currency pair it's necessary that there is another trader/institution with an opposite position.

If Smart Money (Banks) want to buy a currency pair they will need sellers in the market, the existing facility to place these positions in the market is called **LIQUIDITY.**



The Liquidity is defined by Stop losses, where the Stop losses exist is where the liquidity also exists, Smart Money need to activate the stop losses of existing orders in the market so that they can place their positions in the market.



The banks manipulate the price because of **liquidity, but why? banks negotiate large trading volumes and sometimes find it difficult to find the other side of their trades, so they manipulate the price so that they can have their positions in the market.**

3.1. LIQUIDITY TYPES

In the FOREX market there are two types of liquidity, which are:

- 1. Buy Stops Liquidity (BSL)**
- 2. Sell Stops Liquidity (SSL)**

3.2. Buy Stops Liquidity (BSL)

The BSL is originated by Stop Losses of sell orders, after the BSL is taken, the market reverses to the downside, because banks use the BSL to place sell orders in the market.

3.3. What to focus on (for BSL)

PMH - Previous Month High

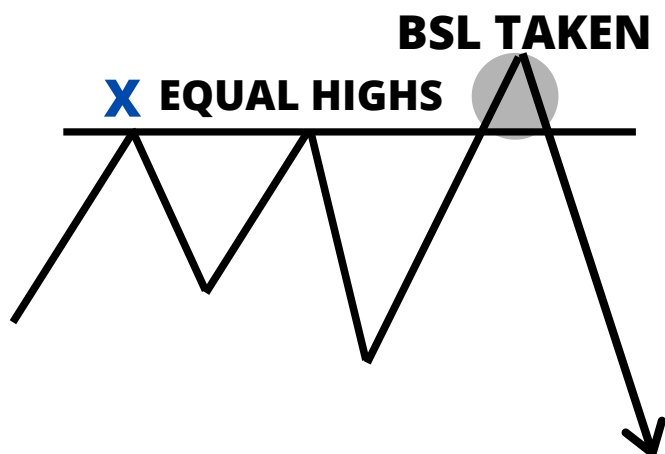
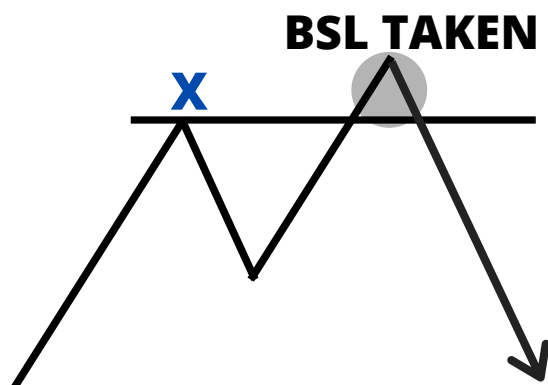
PWH - Previous Week High

PDH - Previous Day High

HOD - High Of Day

OLD HIGH - Swing High

EQUAL HIGHS = Retail Resistance



**X- PMH, PWH, PDH,
HOD, OLD HIGH.**

PMH - PREVIOUS MONTH HIGH



PWH - PREVIOUS WEEK HIGH



PDH - PREVIOUS DAY HIGH



HOD - HIGH OF DAY



EQUAL HIGHS = Retail Resistance



3.4. Sell Stops Liquidity (SSL)

The SSL is originated by Stop Losses of Buy orders, after the SSL is taken, the market reverses to the Upside, because banks use the SSL to place Buy orders in the market.

3.5. What to focus on (for SSL)

PML - Previous Month Low

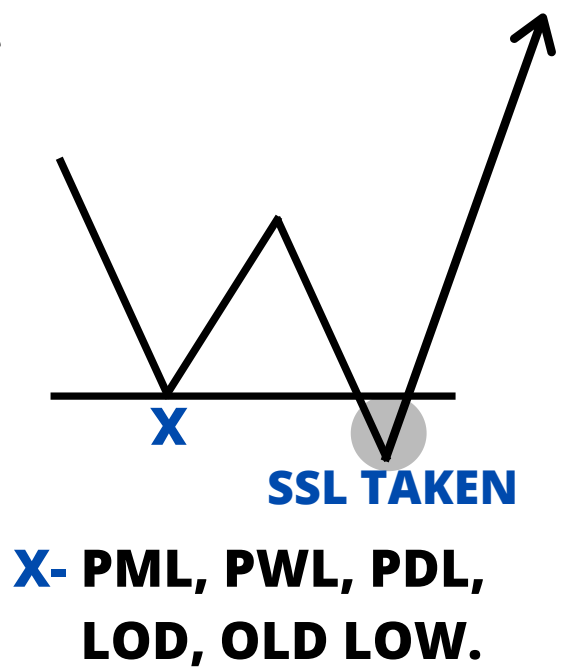
PWL - Previous Week Low

PDL - Previous Day Low

LOD - Low Of Day

OLD LOW - Swing Low

EQUAL LOWS = Retail Support



PML - PREVIOUS MONTH LOW



PDL - PREVIOUS DAY LOW



LOD - LOW OF DAY



OLD LOW - SWING LOW



EQUAL LOWS = Retail Support





When **BSL is taken, the market reverses to the **downside**.**

When **SSL is taken, the market reverses to the **upside**.**

3.6. Stop Hunt: Manipulation For Liquidity

SH is a movement used to neutralize liquidity (stop losses). It's a false breakout above / below the zone where there is **LIQUIDITY.**

THE MARKET MARKERS (BANKS) USUALLY USE HIGH IMPACT NEWS TO TAKE LIQUIDITY.

Stop Hunt: Manipulation For Liquidity



Stop Hunt: Manipulation For Liquidity



High Impact News Events

The High Impact News Events are used to hunt liquidity in the market, always pay attention to the news calendar, to know the pairs that will move, generally, pairs with many news forecasts("High Impact"), those pairs are going to move (trending) during the day or week.



Chapter 4: ORDER BLOCKS

4. ORDER BLOCKS [OB]

Order Blocks are candles where Market Makers (Banks) have placed their positions, generally, the market returns to those candles and they are never violated ("if they are really OB's")

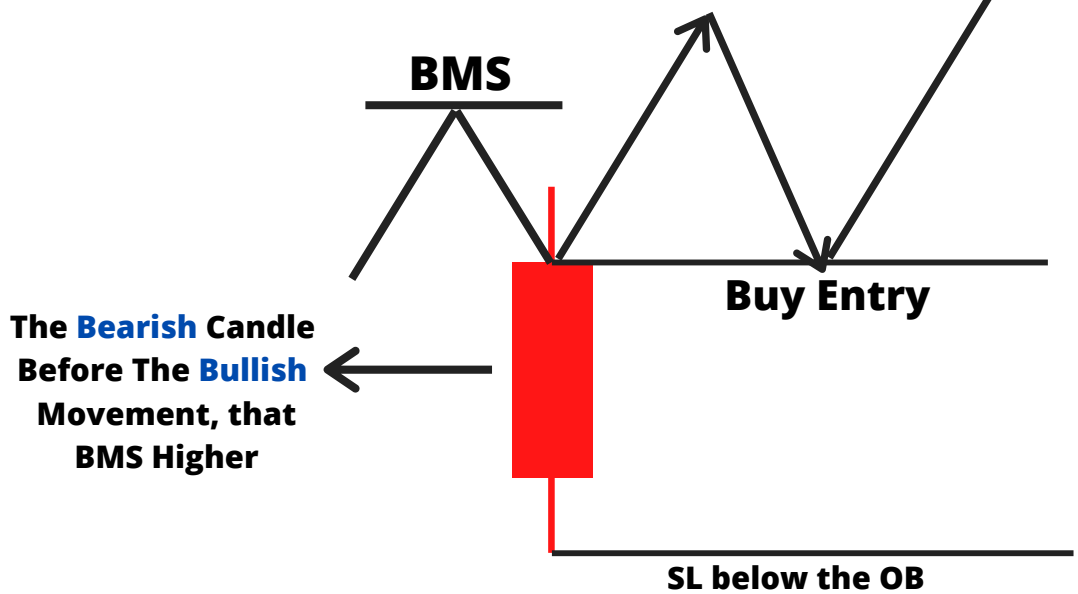
There're 2 types of Order Blocks:

- 1. Bullish Order Blocks**
- 2. Bearish Order Blocks**

4.1. BULLISH ORDER BLOCK

The Bullish Order Block is the last bearish candle before the bullish movement, that Break The Market Structure Higher. Represents a high possibility of holding the price, when the price returns to it.

BULLISH ORDER BLOCK



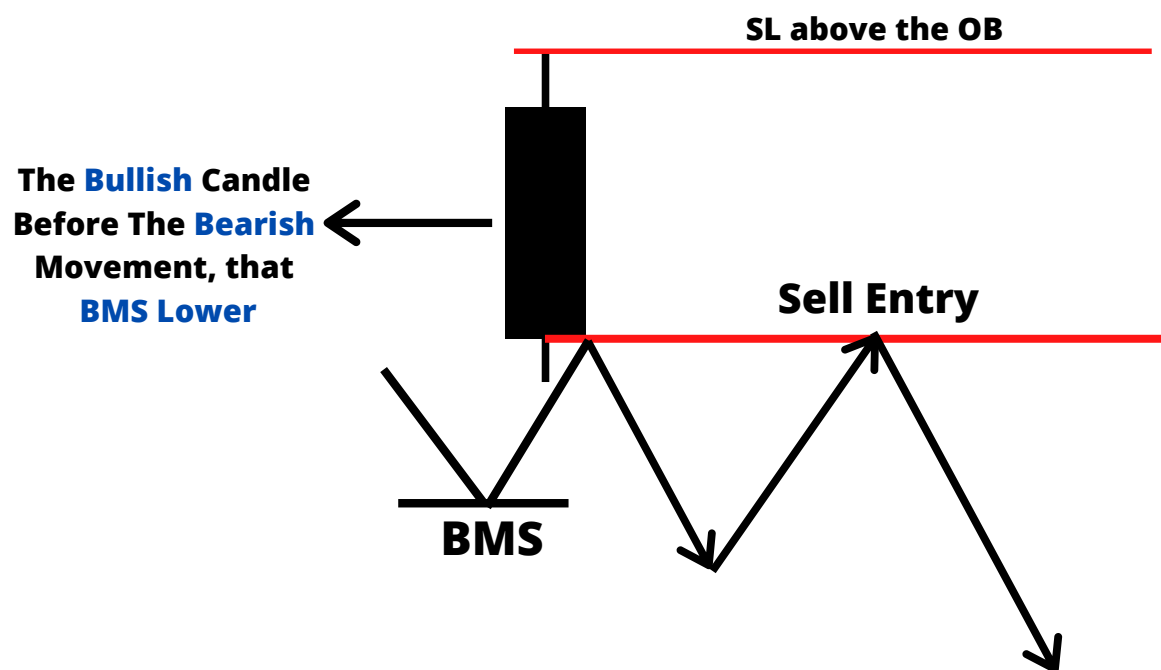
BULLISH ORDER BLOCK



4.2. BEARISH ORDER BLOCK

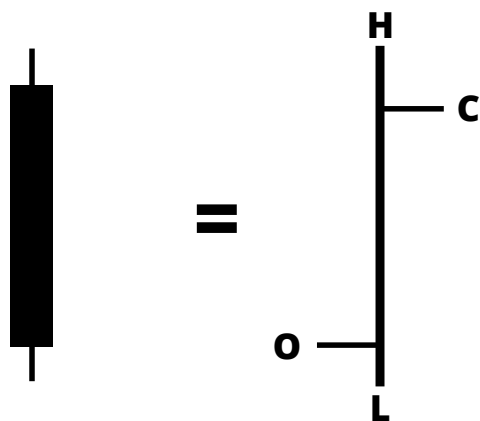
The Bearish Order Block is the last bullish candle before the bearish movement, that Break The Market Structure Lower. Represents a high possibility of holding the price, when the price returns to it.

BEARISH ORDER BLOCK



BEARISH ORDER BLOCK

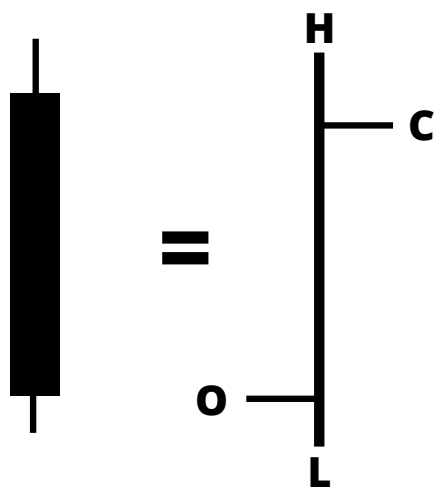




Chapter 5: **DAILY RANGE PRICE ACTION**

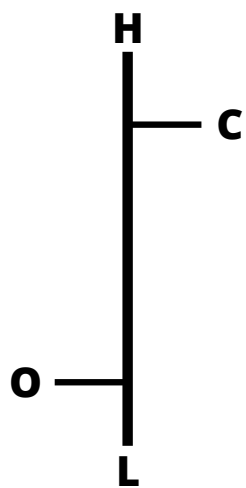
5. DAILY RANGE PRICE ACTION

The Daily Range is defined by: Open Price, Low Of Day, High Of Day and Close Price.

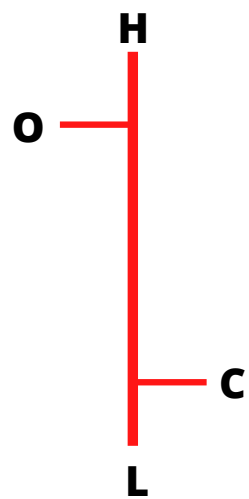


**O- Open Price
L- Low Of Day
H- High Of Day
C- Close Price**

Bullish Day



Bearish Day



5.1. SESSIONS

The Daily Range is defined by 3 important sessions, which are:

- 1. Asian Session**
- 2. London Session**
- 3. New York Session**

5.2. Asian Session

The Asian session is characterized by being a consolidation (of 20 - 40 pips), due to the lack of liquidity in the market.

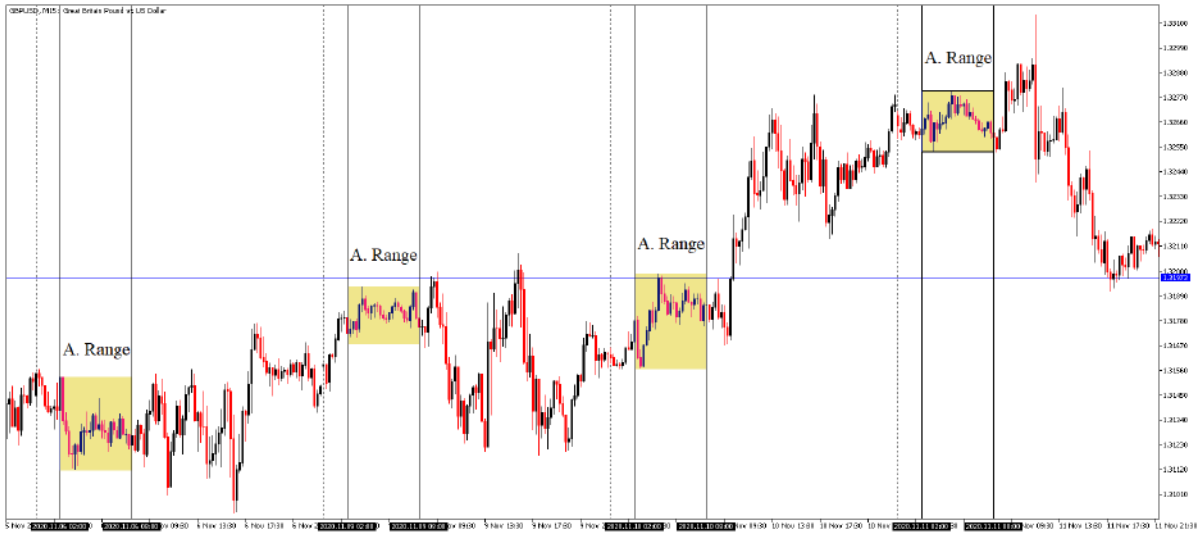
Delimitation:

The session starts from 02:00 until 08:00 (UTC +2).

ASIAN SESSION



ASIAN SESSION



5.2. London Session

The London Session is characterized by making the Low Of Day or High Of Day, it can be used to take traders to the opposite side of the true direction of the day (Because Of Liquidity).

Delimitation:

Not the whole London session need attention, focus on the first 2-3 Hours at the beginning of the session: From 09:00 until 11:00/12:00 UTC(+2).





5.3. New York Session

The NY session is characterized by being a retraction after the London Session made the Low/High of the day, sometimes the NY session can make the Low/High of the day.

Delimitation:

Not the whole NY session need attention, focus on the first 2-3 Hours at the beginning of the session: From 14:00 until 16:00/17:00 UTC(+2)

New York Open



New York Open



5.4.Accumulation, Manipulation And Distribution [AMD]

Accumulation:

The accumulation of positions generally occurs during the **Asian session, the accumulation is characterized by being a **consolidation** (Asian session), but it may not be the Asian session.**

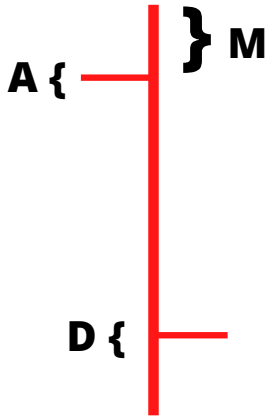
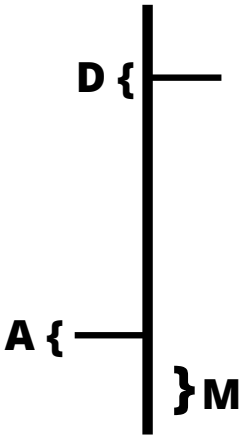
Manipulation

usually occurs at the opening of the London session (sometimes it can be NY open), this Manipulation consists of taking the price to the opposite side of the true direction of the rest of the day.

Distribution:

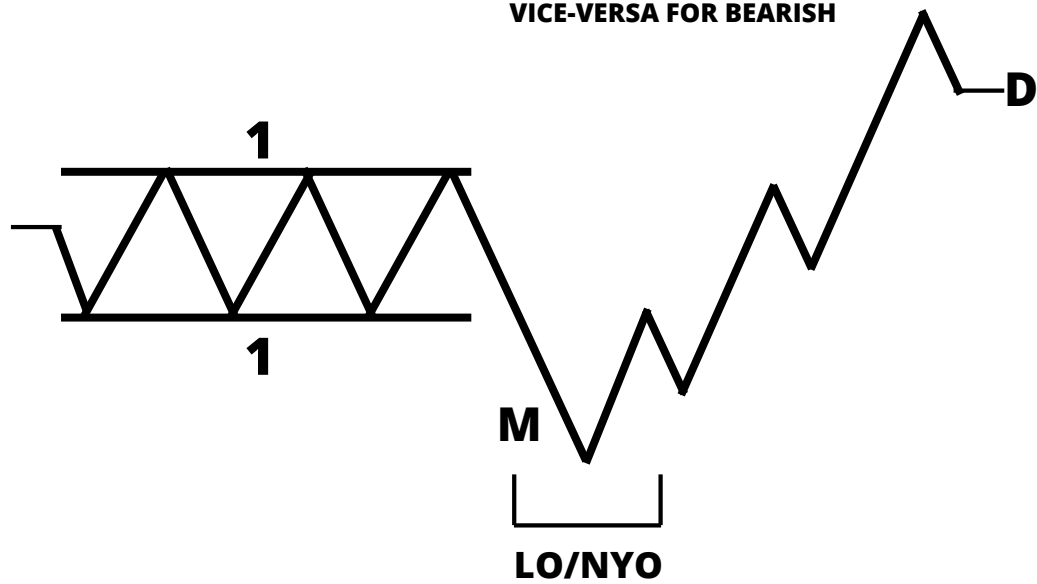
occurs when MMs liquidate (Exit) their positions.

AMD on the daily Bar

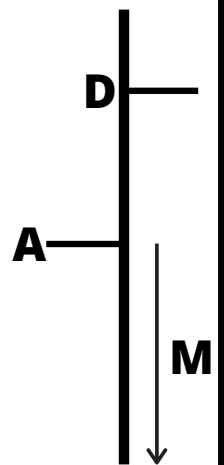


Bullish AMD

VICE-VERSA FOR BEARISH



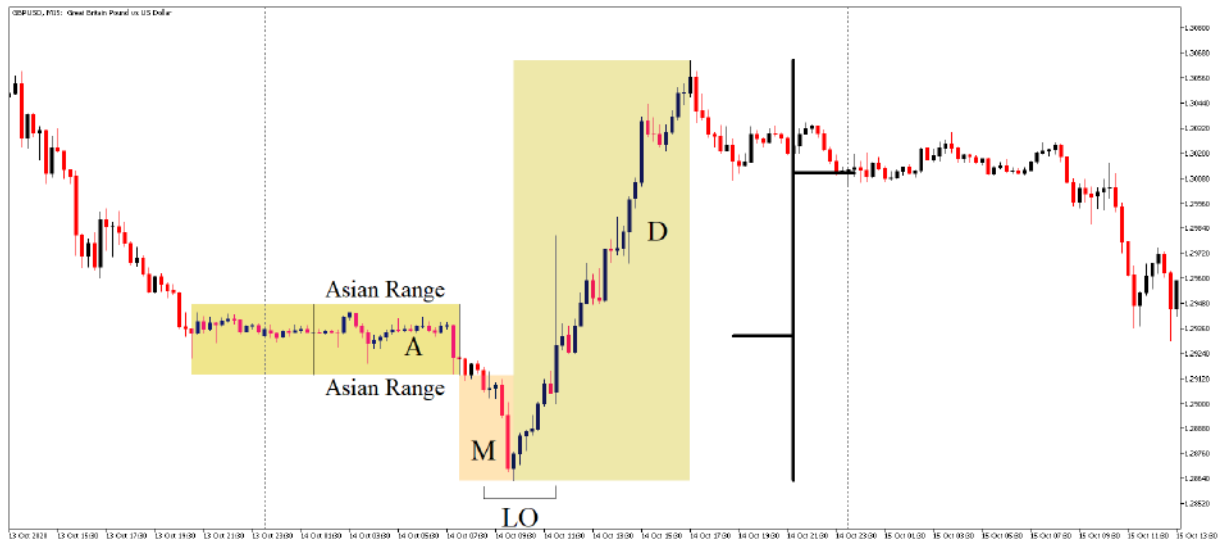
DAILY BAR



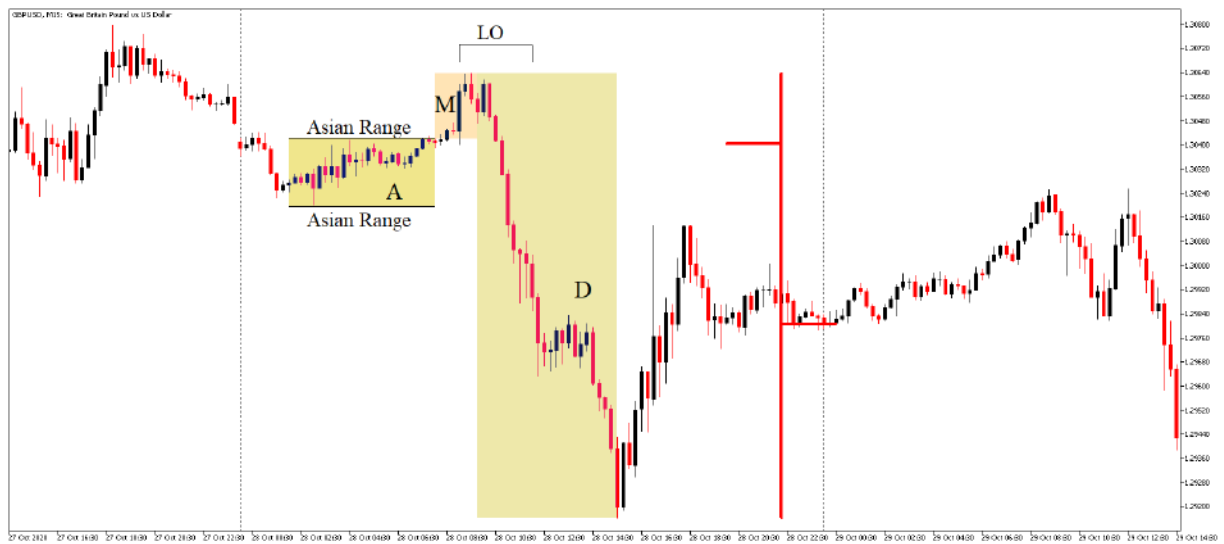
1. Accumulation [Asia Session]

2. London Open / New York Open

Bullish AMD



Bearish AMD



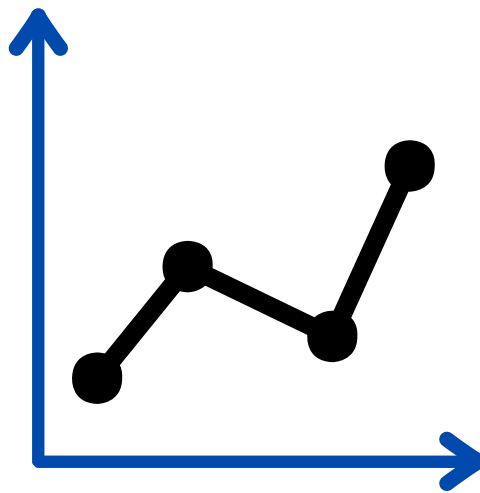


The Market Makers (Banks) **Buy/Sell
below/Above the Asian Session/open price
(Because Of **Liquidity**).**

Asian Session/Open Price:

Below: Sell Stops Liquidity [SSL].

Above: Buy Stops Liquidity [BSL].



Chapter 6: **POWERFUL SETUPS**

TURTLE SOUP

Turtle Soup is the same as **Stop Hunt**, is a movement used to neutralize liquidity (stop losses). It's a false breakout above / below the zone where there is liquidity.

Turtle Soup Short [TSS]

Represent a short setup, it's a false break above a zone where Buy Stops Liquidity Exist.

Turtle Soup Long [TSL]

Represent a long setup, it's a false break Below a zone where Sell Stops Liquidity Exist.

How To Trade Turtle Soup

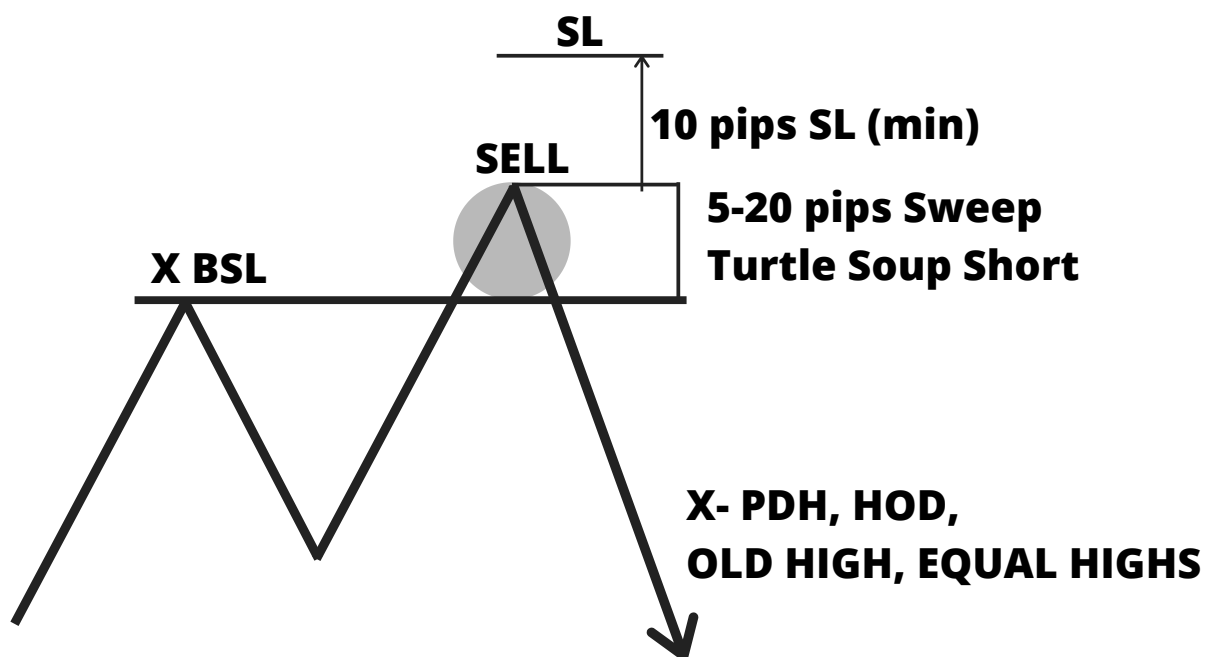
The price usually Sweeps 5-20 pips (even more) above or below a point where liquidity Exist, after the price sweep the point, enter a trade against the movement used to Sweep Stops (Liquidity) with Minimum 10 pips SL (In Lower Time Frames).

That means:

BSL Raid => Turtle Soup Short

SSL Raid => Turtle Soup Long

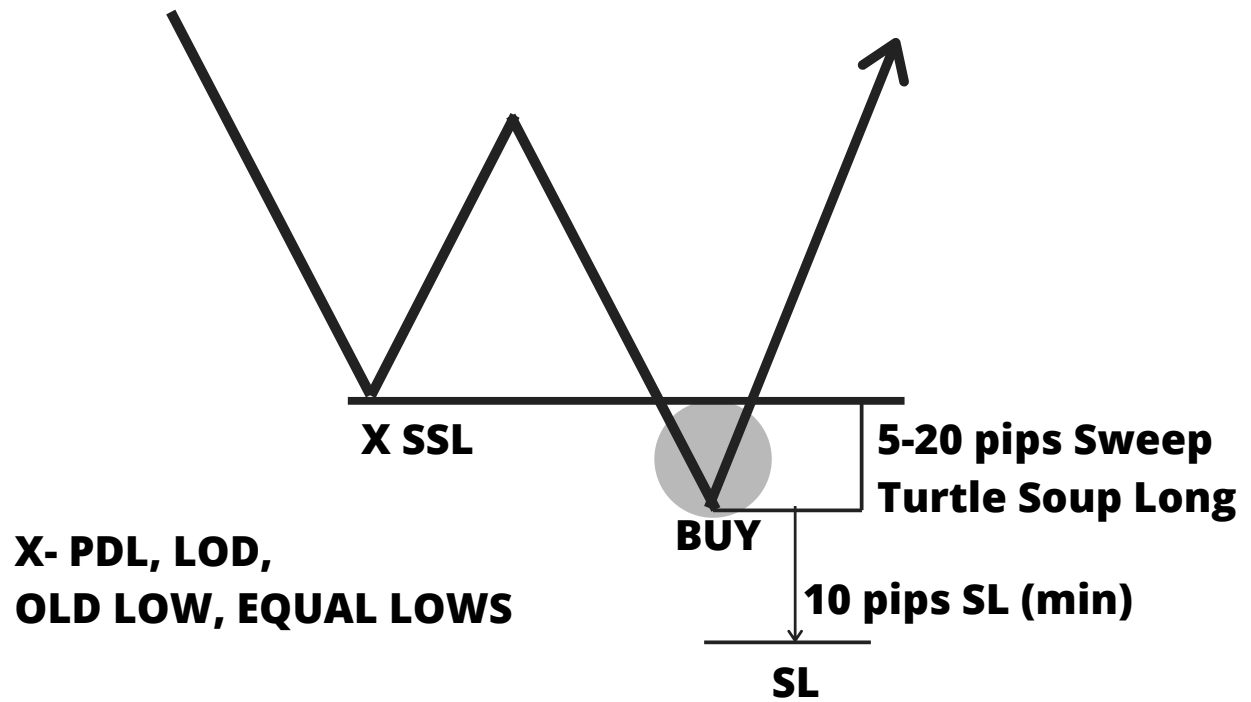
TURTLE SOUP SHORT



TURTLE SOUP SHORT



TURTLE SOUP LONG





Stop Hunt, Break In Market Structure and Return To Order Block [SH, BMS, RTO]

Where Market Makers (Banks) have taken liquidity (SH), they have placed positions in these areas and generally the price must not exceed these levels. 

How To Trade SH + BMS + RTO

- 1. First, occurs the SH, that movement is used by Market Makers to neutralize Liquidity.**
- 2. Second, there's a Break In Market Structure (BMS), Confirming the SH.**
- 3. Third, the price Return To Order Block (RTO).**

Bullish SH + BMS + RTO

The diagram illustrates a trading strategy on a price chart. A price line starts at point 'X', rises to a peak labeled 'BMS', falls to a point labeled 'SH', rises to a higher peak labeled '1st Target', and then falls to a point labeled 'RTO'. A horizontal line labeled 'BUY' is positioned above the 'RTO' point, and a horizontal line labeled 'SL' (Stop Loss) is positioned below it. A gray shaded area represents the profit zone between the 'BUY' and 'SL' lines, extending from the 'RTO' point to the right. A red vertical bar is located at the 'SH' point. An upward-pointing arrow is shown to the right of the 'BUY' line.

Bullish SH + BMS + RTO

The diagram illustrates a trading strategy on a price chart. A price line starts at point 'X', rises to a peak labeled 'BMS', falls to a point labeled 'SH', rises to a higher peak labeled '1st Target', and then falls to a point labeled 'RTO'. A horizontal line labeled 'BUY' is positioned above the 'RTO' point, and a horizontal line labeled 'SL' (Stop Loss) is positioned below it. A gray shaded area represents the profit zone between the 'BUY' and 'SL' lines, extending from the 'RTO' point to the right. A red vertical bar is located at the 'SH' point. An upward-pointing arrow is shown to the right of the 'BUY' line.

Bullish SH + BMS + RTO

The diagram illustrates a trading strategy on a price chart. A price line starts at point 'X', rises to a peak labeled 'BMS', falls to a point labeled 'SH', rises to a higher peak labeled '1st Target', and then falls to a point labeled 'RTO'. A horizontal line labeled 'BUY' is positioned above the 'RTO' point, and a horizontal line labeled 'SL' (Stop Loss) is positioned below it. A gray shaded area represents the profit zone between the 'BUY' and 'SL' lines, extending from the 'RTO' point to the right. A red vertical bar is located at the 'SH' point. An upward-pointing arrow is shown to the right of the 'BUY' line.

Bullish SH + BMS + RTO

The diagram illustrates a trading strategy on a price chart. A price line starts at point 'X', rises to a peak labeled 'BMS', falls to a point labeled 'SH', rises to a higher peak labeled '1st Target', and then falls to a point labeled 'RTO'. A horizontal line labeled 'BUY' is positioned above the 'RTO' point, and a horizontal line labeled 'SL' (Stop Loss) is positioned below it. A gray shaded area represents the profit zone between the 'BUY' and 'SL' lines, extending from the 'RTO' point to the right. A red vertical bar is located at the 'SH' point. An upward-pointing arrow is shown to the right of the 'BUY' line.

Bullish SH + BMS + RTO

The diagram illustrates a trading strategy on a price chart. A price line starts at point 'X', rises to a peak labeled 'BMS', falls to a point labeled 'SH', rises to a higher peak labeled '1st Target', and then falls to a point labeled 'RTO'. A horizontal line is drawn at the level of 'RTO', with a shaded gray area below it extending to the right. A red vertical bar is positioned at 'SH'. To the right of the chart, the words 'BUY' and 'SL' are aligned with the horizontal line and the bottom of the shaded area, respectively.

Bullish SH + BMS + RTO

The diagram illustrates a trading strategy on a price chart. A price line starts at point 'X', rises to a peak labeled 'BMS', falls to a point labeled 'SH', rises to a higher peak labeled '1st Target', and then falls to a point labeled 'RTO'. A horizontal line is drawn at the level of 'RTO', with a shaded gray area below it extending to the right. A red vertical bar is positioned at 'SH'. To the right of the chart, the words 'BUY' and 'SL' are aligned with the horizontal line and the bottom of the shaded area, respectively.

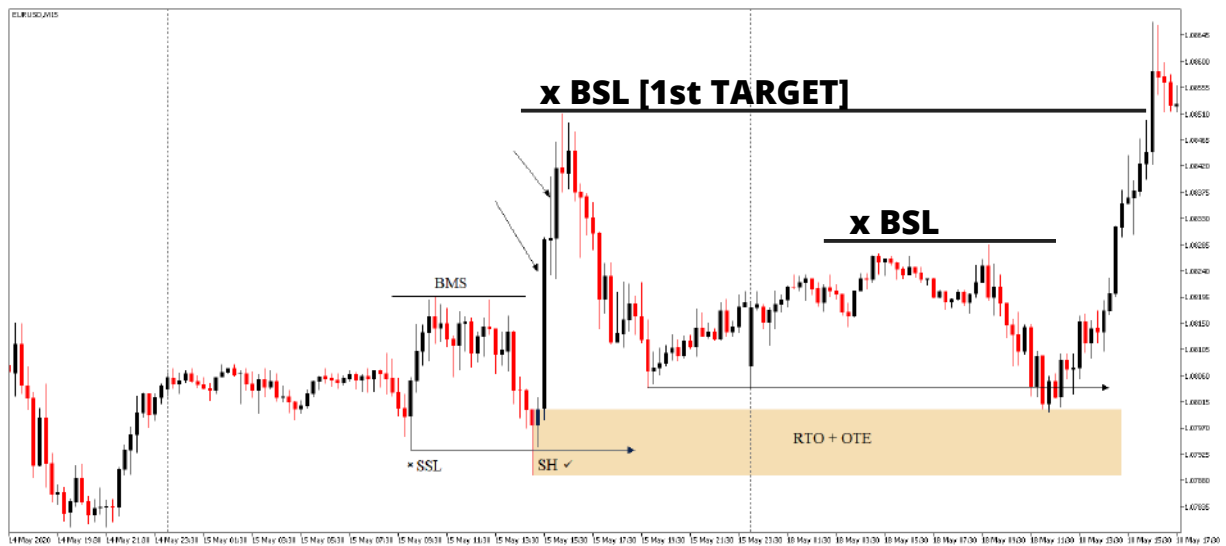
Bullish SH + BMS + RTO

The diagram illustrates a trading strategy on a price chart. A price line starts at point 'X', rises to a peak labeled 'BMS', falls to a point labeled 'SH', rises to a higher peak labeled '1st Target', and then falls to a point labeled 'RTO'. A horizontal line is drawn at the level of 'RTO', with a shaded gray area below it extending to the right. A red vertical bar is positioned at 'SH'. To the right of the chart, the words 'BUY' and 'SL' are aligned with the horizontal line and the bottom of the shaded area, respectively.

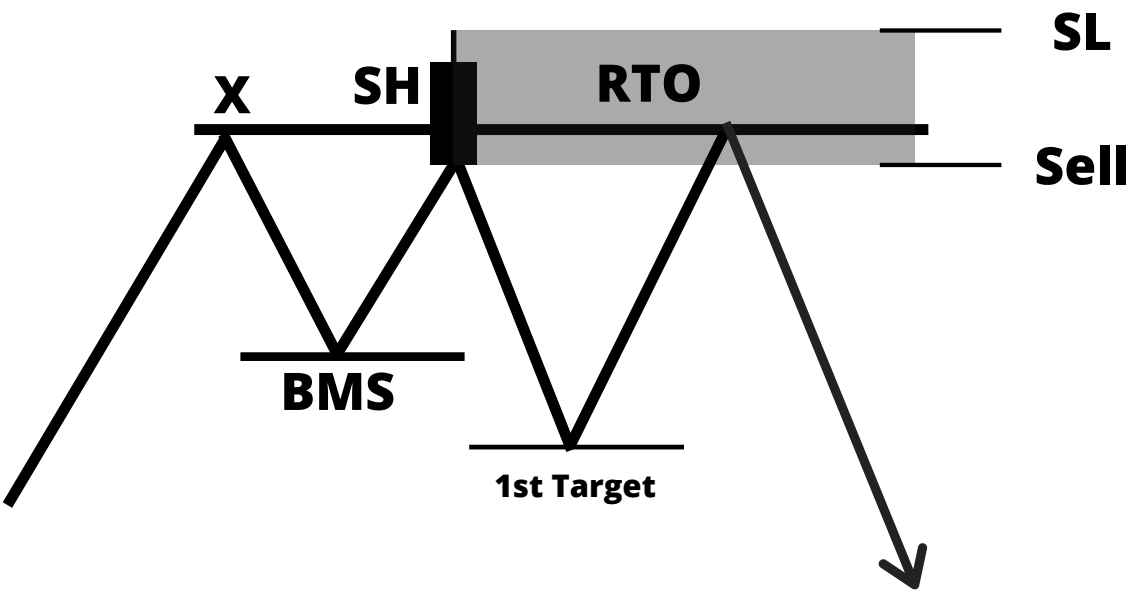
Bullish SH + BMS + RTO

The diagram illustrates a trading strategy on a price chart. A price line starts at point 'X', rises to a peak labeled 'BMS', falls to a point labeled 'SH', rises to a higher peak labeled '1st Target', and then falls to a point labeled 'RTO'. A horizontal line is drawn at the level of 'RTO', with a shaded gray area below it extending to the right. A red vertical bar is positioned at 'SH'. To the right of the chart, the words 'BUY' and 'SL' are aligned with the horizontal line and the bottom of the shaded area, respectively.

Bullish SH + BMS + RTO



Bearish SH + BMS + RTO



Bearish SH + BMS + RTO



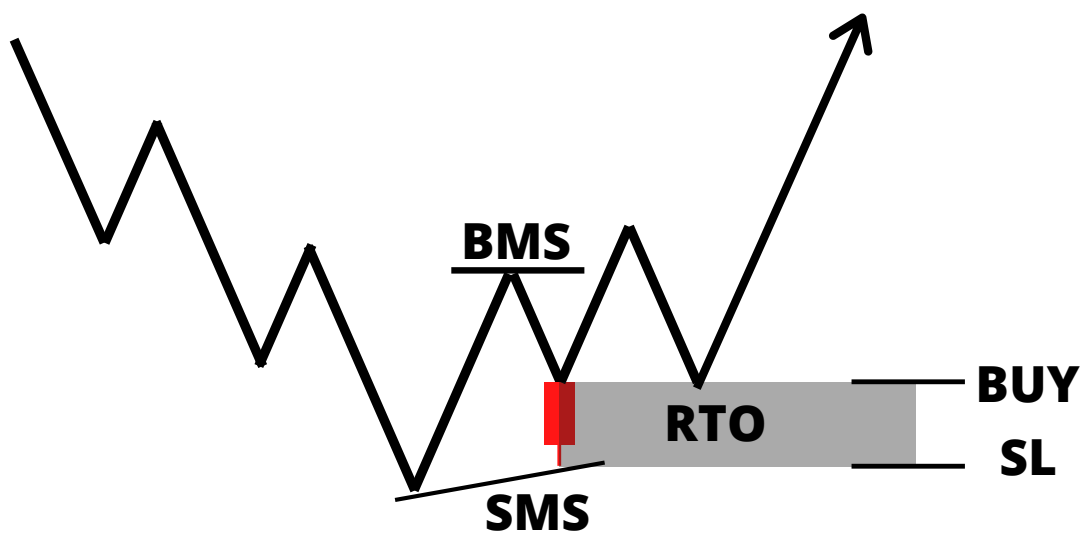
Failure Swing (SMS), Break In Market Structure and Return To Order Block [SMS + BMS + RTO]

When the price fails to break a top or bottom, it shows that the trend is ending and a reversal may occur 

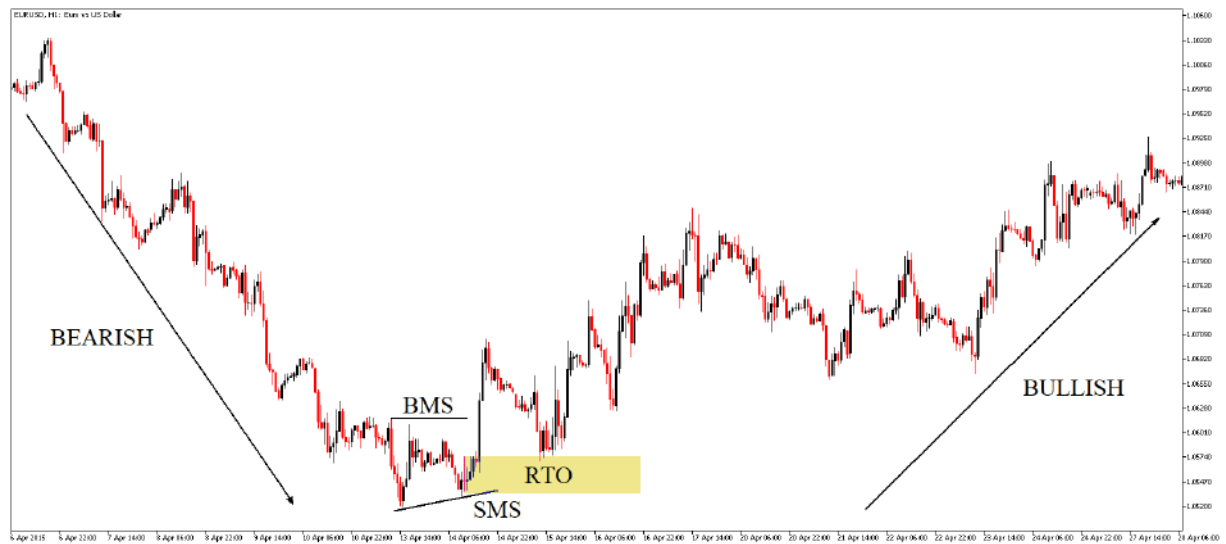
How To Trade SMS + BMS + RTO

- 1. First, the price fails to break a **top** or **bottoms**.**
- 2. Second, there's a Break In Market Structure (BMS), Confirming the SMS.**
- 3. Third, the price Return To Order Block (RTO).**

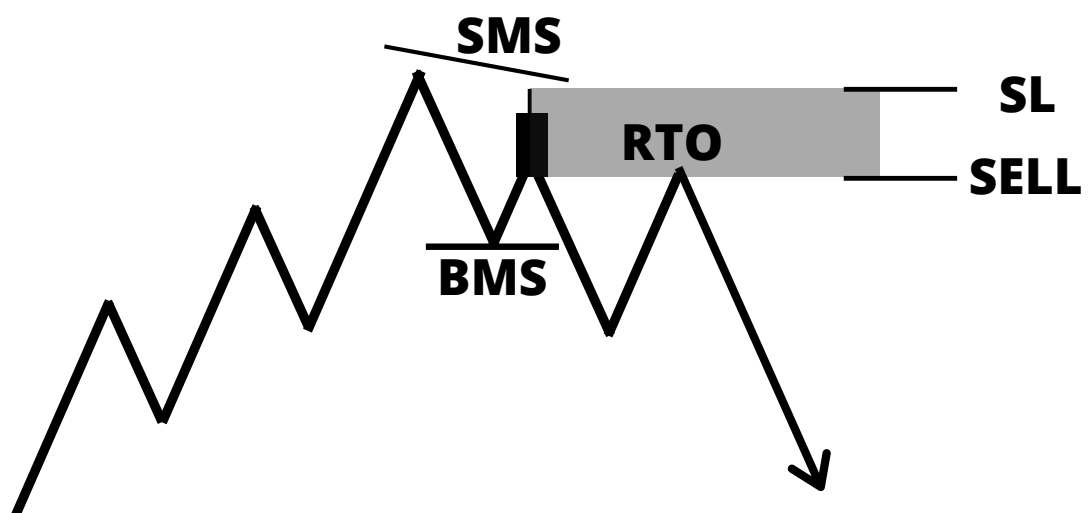
Bullish SMS + BMS + RTO



Bullish SMS + BMS + RTO



Bearish SMS + BMS + RTO



Bearish SMS + BMS + RTO



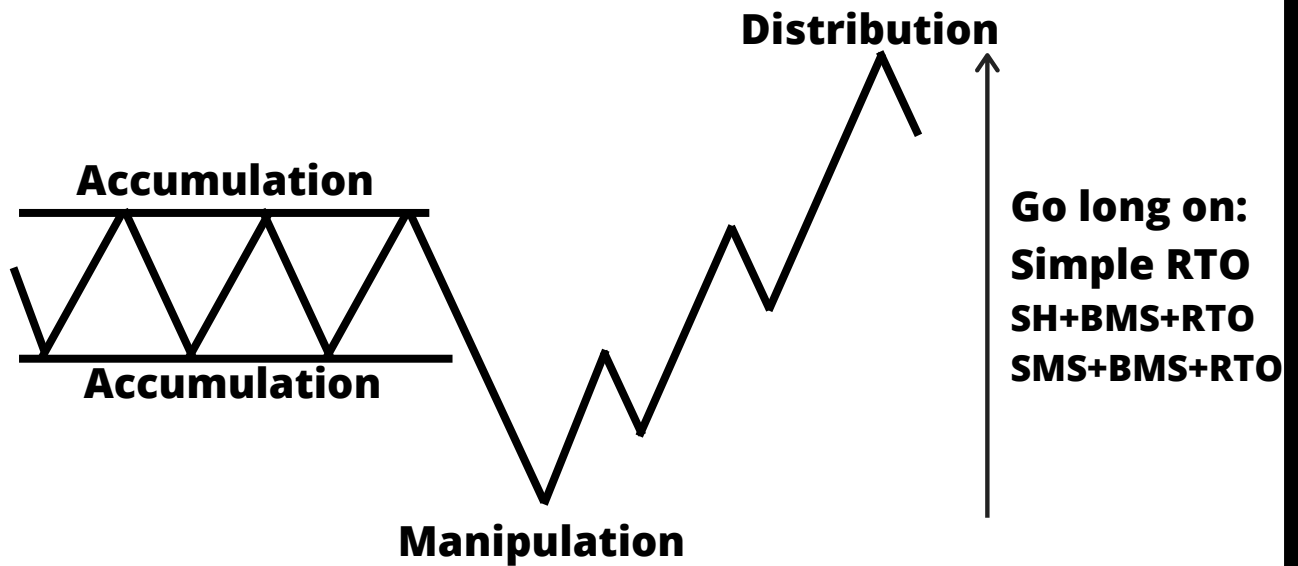
Accumulation, Manipulation And Distribution [AMD]

How To Trade AMD:

- **Accumulation**: the price will be ranging.
- **Manipulation**: the price will break the range direction to trap traders (Because of Liquidity)
- **Distribution**: the price will go against the Manipulation movement, and here, look to go long/short on: **Simple RTOs, SH + BMS + RTO, SMS + BMS + RTO.**

Bullish AMD

VICE-VERSA FOR BEARISH



Bullish AMD

VICE-VERSA FOR BEARISH





Chapter 7: PUTTING EVERYTHING TOGETHER

CONFLUENCE

Confluence is very important to increase the chances of winning trades, a trader needs to have at least two factors of confluence to open a trade. When the confluence exists, the trader becomes more confident on his negotiations.

The Factors Of Confluence Are:

Higher Time Frame Analysis;

Trade during London Open;

Trade during New York Open;

Refine Higher Time Frame key levels in Lower Time Frame entries;

Combine setups;

Trade during High Impact News Events.

7.2. HTF analysis, LTF Entries

Refine HTF key levels in LTF entries or setups for confirmation that the HTF analysis will hold the price.

HTF Key Levels Are:

HTF Order Blocks;

HTF Liquidity Pools;

HTF Market Structure.

Note: It's not mandatory to refine all HTF key levels.

Time Frame Setups

For Swing Trading

HTF: Weekly, Daily, H4.

Entries: H1, M30, M15 (Sometimes on H4).

For Short Term Trading

HTF: Daily, H4, H1

Entries: M30, M15 (Sometimes on H1).

For Day Trades and Scalps

HTF: H4, H1, M30

Entries: M15, M5, M1 (Sometimes on M30).

Swing Trading Example



HTF Setup: Turtle Soup Long.

Swing Trading Example



LTF Setup: SH + BMS + RTO.

Swing Trading Example



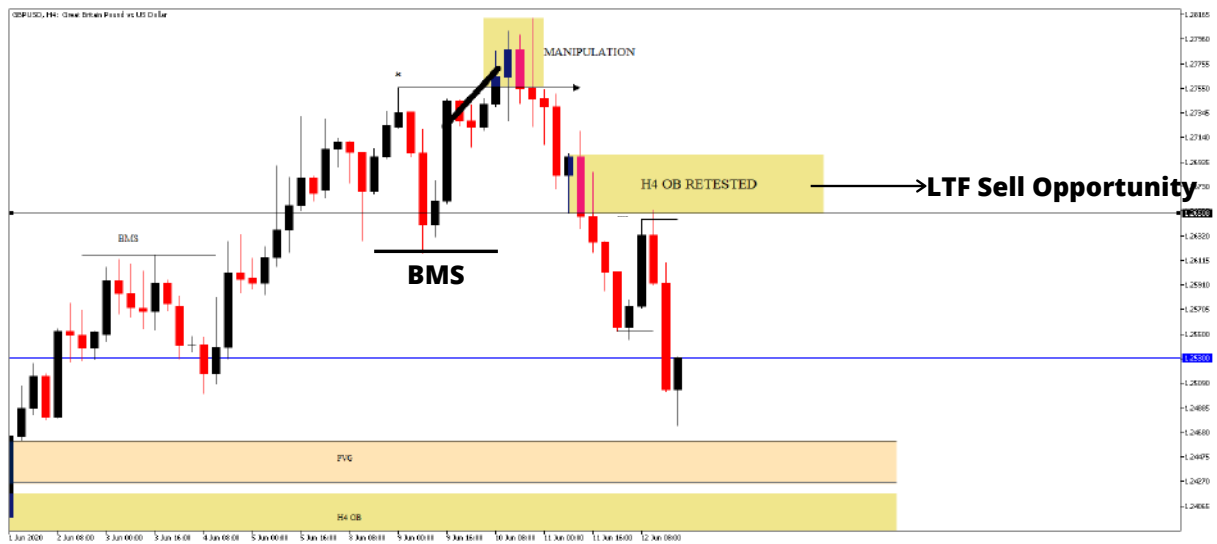
HTF Setup: SH + BMS + RTO

Swing Trading Example



LTF Setup: Turtle Soup And SH + BMS + RTO.

Short Term Trading Example



HTF Setup: Simple RTO after BMS.

Short Term Trading Example



LTF Setup: SH + BMS + RTO.

Another Confluence: RTO During New York Open.

Short Term Trading Example



HTF Setup: Simple RTO, After SH.

Short Term Trading Example



LTF Setup: SH + BMS + RTO inside of 4H RTO.

Day Trades and Scalps

Highlight:

Asian Range (To buy High or Sell Low) "If it's possible".

Enter a trade during:

London Open

New York Open

Price retesting HTF Key Levels

High Impact News Events.

Day Trades and Scalps



Setup: SH + BMS + RTO.

Confluence: RTO during New York Open.

Day Trades and Scalps



Setup: Turtle Soup Long and SH + BMS + RTO.

Confluence: Turtle Soup and RTO during New York Open.



Chapter 8: **MARKED UP CHARTS**

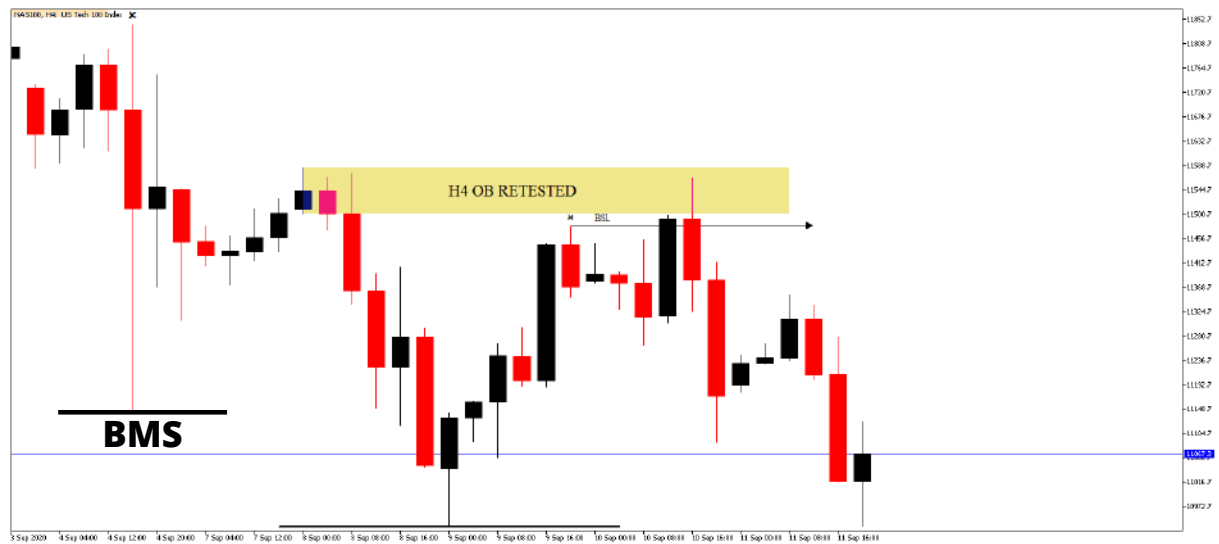
EUR/USD



PWL Taken Out = SH

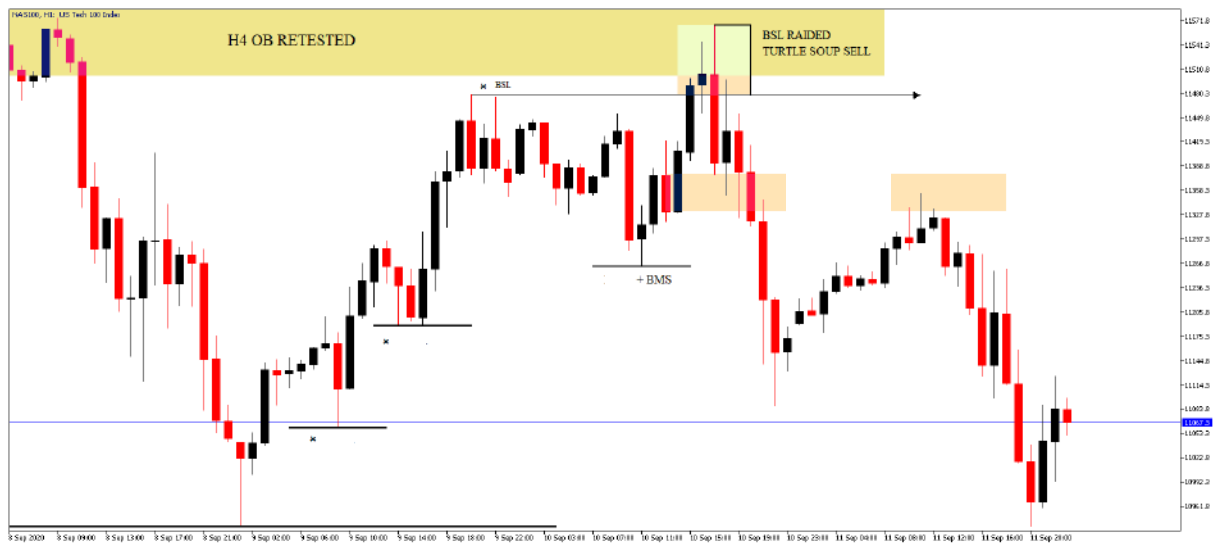
LTF Setup: SH + BMS + RTO

NASDAQ



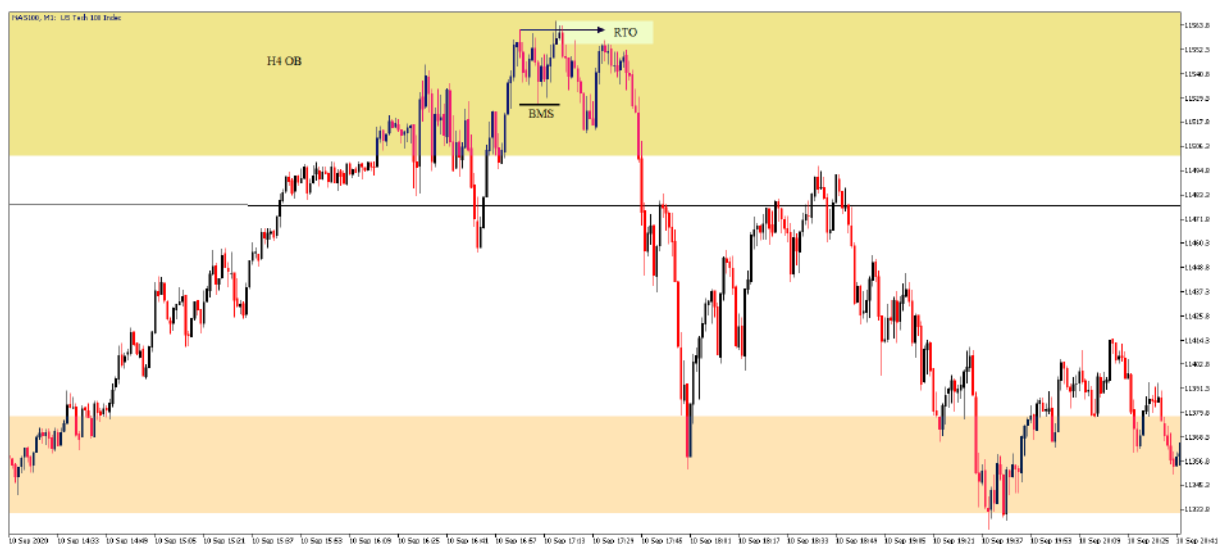
HTF Setup: Simple RTO ON H4 OB = SHORT SETUP

NASDAQ (CON..)



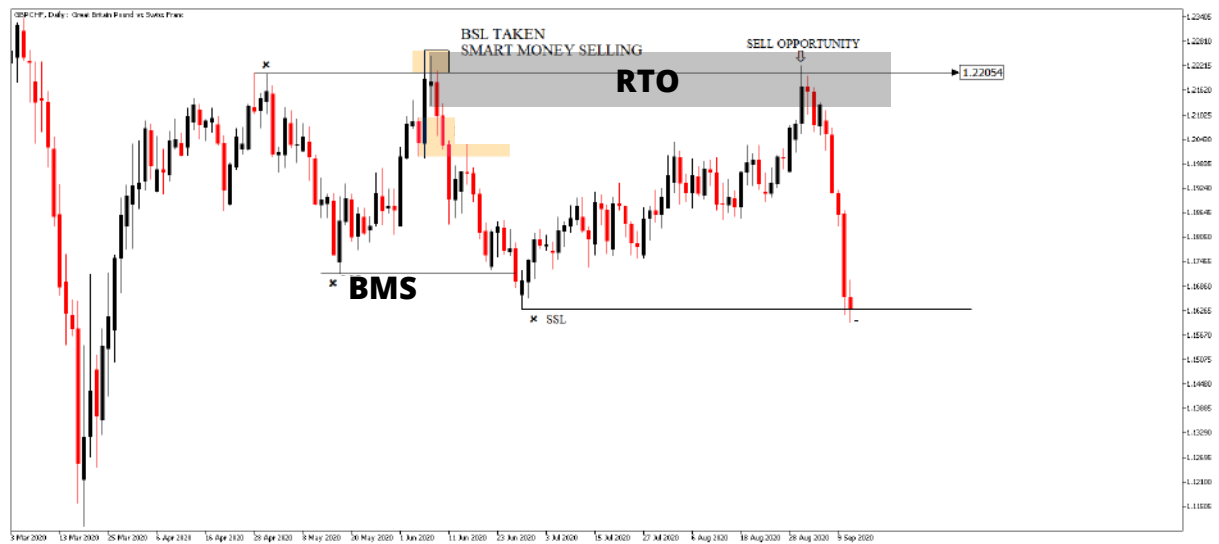
H1 Turtle Soup Short + H4 RTO

NASDAQ (CON..)



LTF Setup: SH + BMS + RTO inside of H4 OB

GBP/CHF



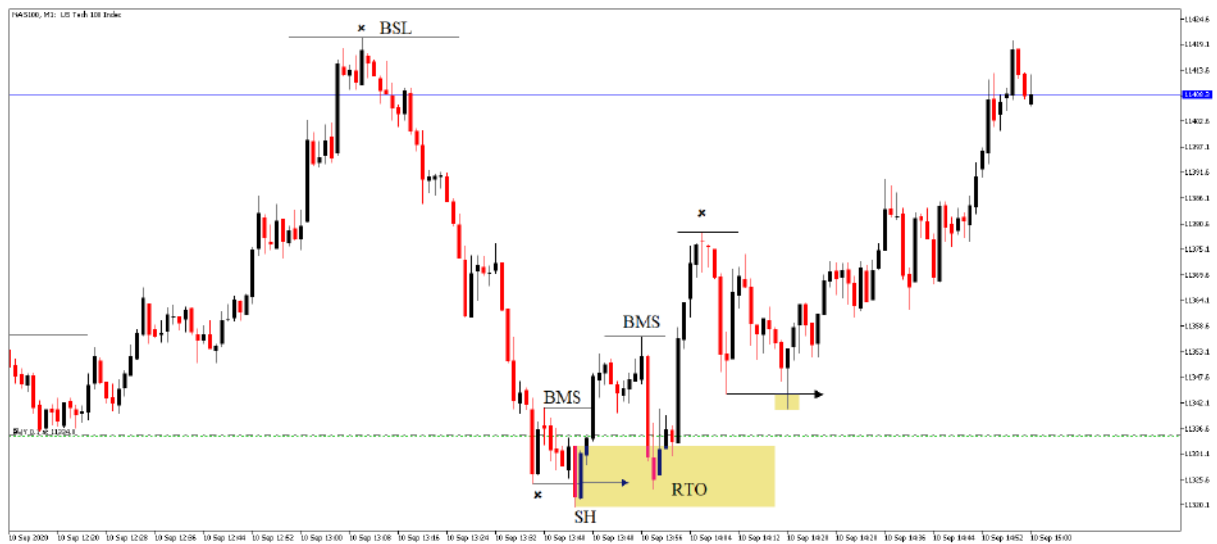
HTF Setup: SH + BMS + RTO

GBP/CHF (Con..)



LTF Setup: SMS + BMS + RTO

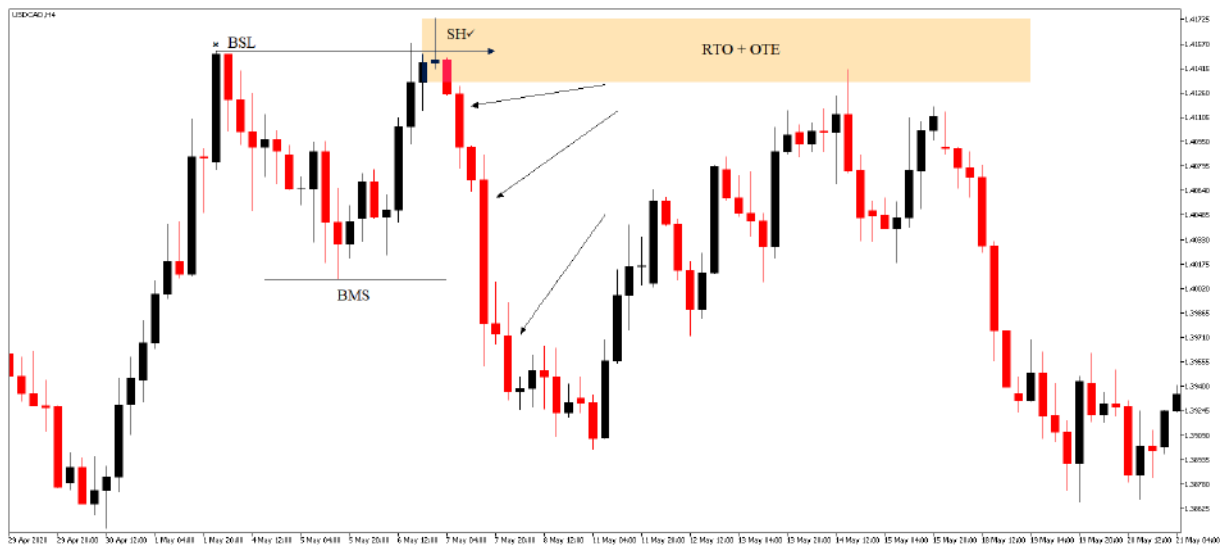
NASDAQ



SH + BMS + RTO

NOTE: Trade during London Open, New York Open, High Impact News Events

USD/CAD



SH + BMS + RTO

The H4 RTO Could be refined in LTF entry.

EUR/USD

PDL Liquidity run = SH = Turtle Soup Long.

NOTE: Trade during London Open, New York Open, High Impact News Events.

NOTE: Trade during London Open, New York Open, High Impact News Events.

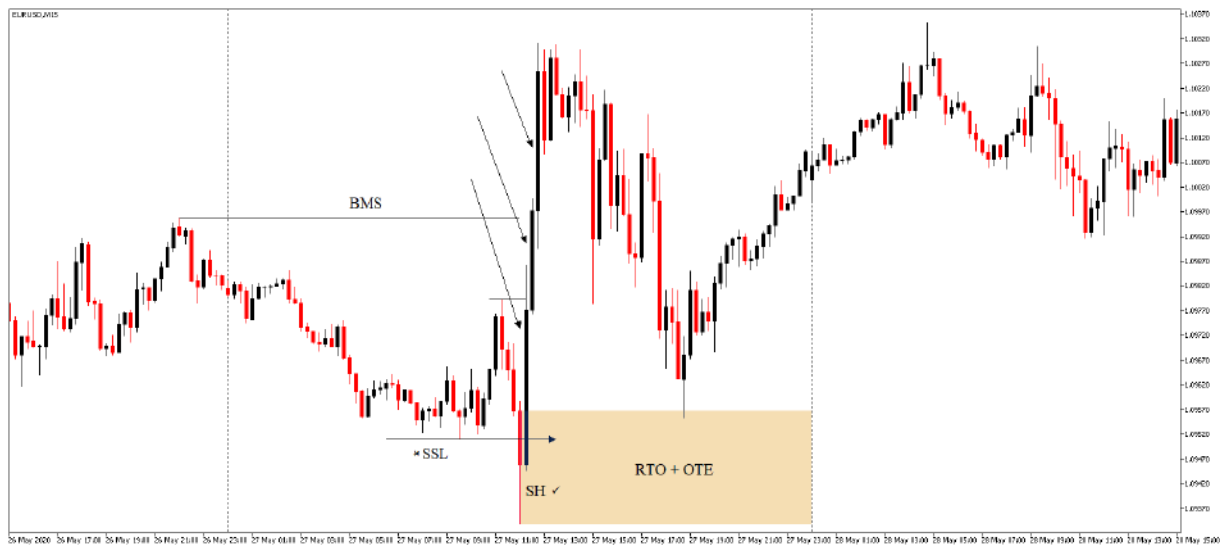
EUR/USD



PDH Liquidity run = SH = Turtle Soup Short.

NOTE: Trade during London Open, New York Open, High Impact News Events.

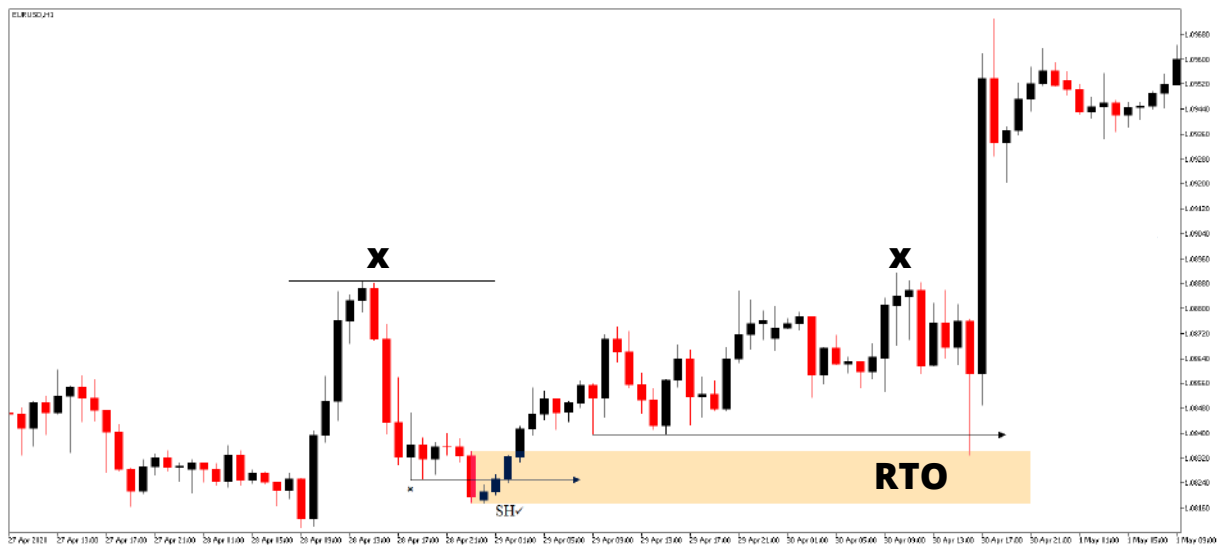
EUR/USD



SH + BMS + RTO.

NOTE: Trade during London Open, New York Open, High Impact News Events.

EUR/USD



SH + RTO.

NOTE: Trade during London Open, New York Open, High Impact News Events.

AUD/USD



SH + BMS + RTO.

The H4 RTO Could be refined in LTF entry.

NASDAQ



Equal Highs Liquidity run = SH = Turtle Soup Short.

NOTE: Trade during London Open, New York Open, High Impact News Events.

Downloaded from <http://ajphaphysocpharmacology.physocpharmacology.aipr.org/> on November 14, 2014



NOTE: Trade during London Open, New York Open, High Impact News Events.

EUR/USD



SH + BMS + RTO.

NOTE: Trade during London Open, New York Open, High Impact News Events.

GBP/USD



Equal Lows Liquidity run = SH = Turtle Soup Long.

NOTE: Trade during London Open, New York Open, High Impact News Events.

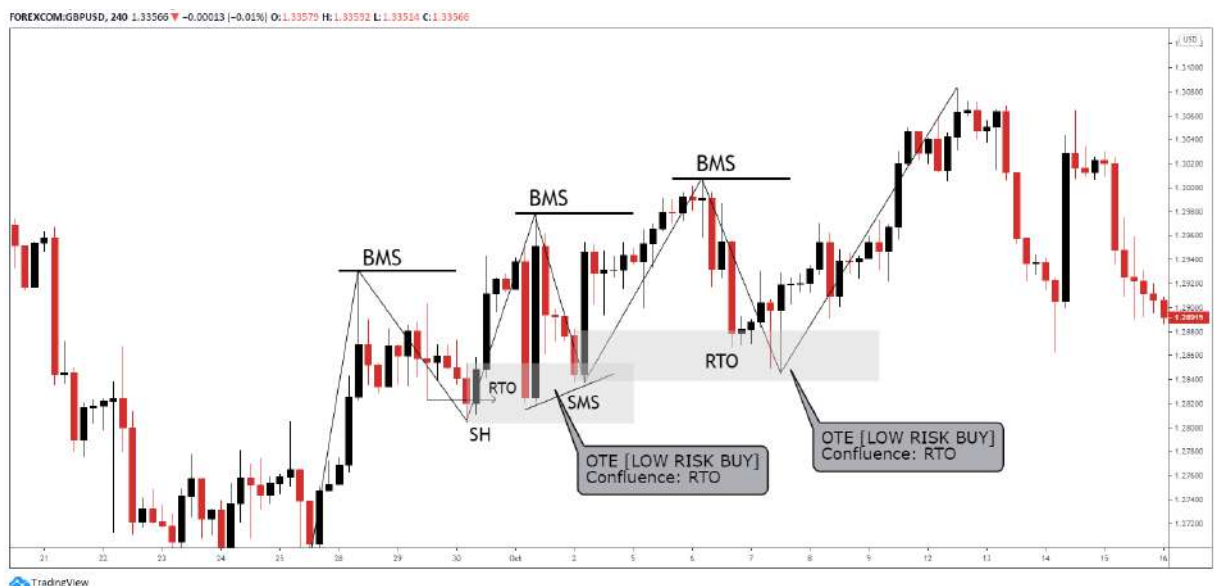
AUD/USD



SH + BMS + RTO.

The H4 RTO Could be refined in LTF entry

GBP/USD



TradingView

Bullish Market Structure

Confluence: SH + BMS + RTO AND SMS + BMS + RTO.

GBP/USD



Bullish AMD with a RTO during the Distribution Phase.

NOTE: Trade during London Open, New York Open, High Impact News Events.

GBP/USD



Tradingview

PDL Liquidity run = SH = Turtle Soup Long.

NOTE: Trade during London Open, New York Open, High Impact News Events.

GBP/USD

WadeFXSetups published on TradingView.com, September 30, 2020 18:48:33 SAST
OANDA:GBPUSD, \$ 1.28998 ▲ +0.00406 (+0.32%) O:1.28971 H:1.28998 L:1.28937 C:1.28998



TradingView

LTF Setup: SMS + BMS + RTO Below PDL.

NOTE: Trade during London Open, New York Open, High Impact News Events.

GBP/USD



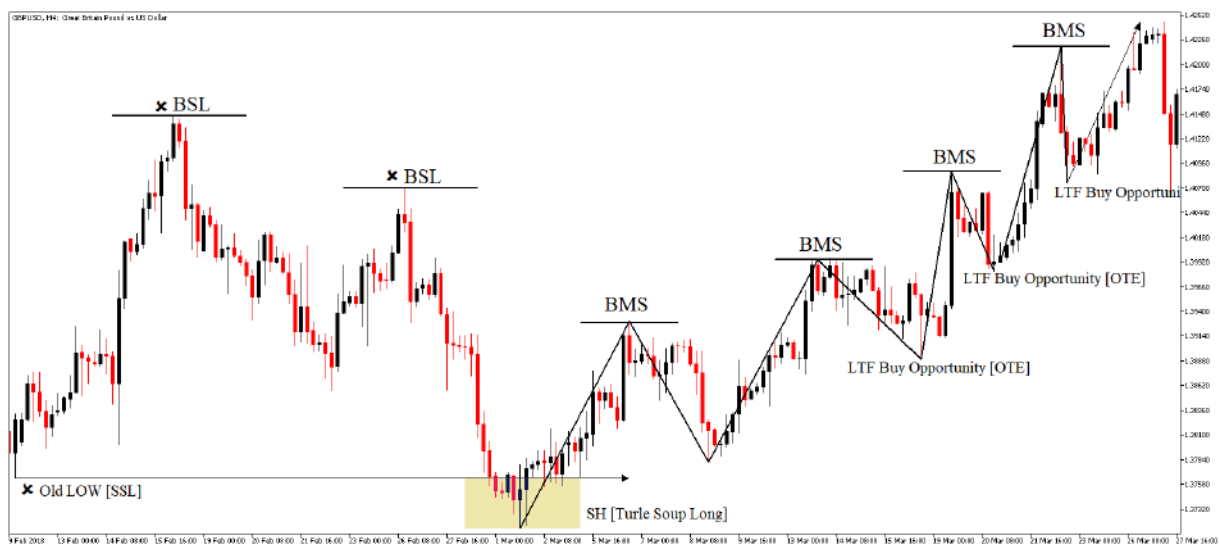
**Accumulation, Manipulation and Distribution | PDH Liquidity Run
Confluence: London Open.**

GBP/USD



Accumulation, Manipulation and Distribution.
Confluence: London Open.

GBP/USD



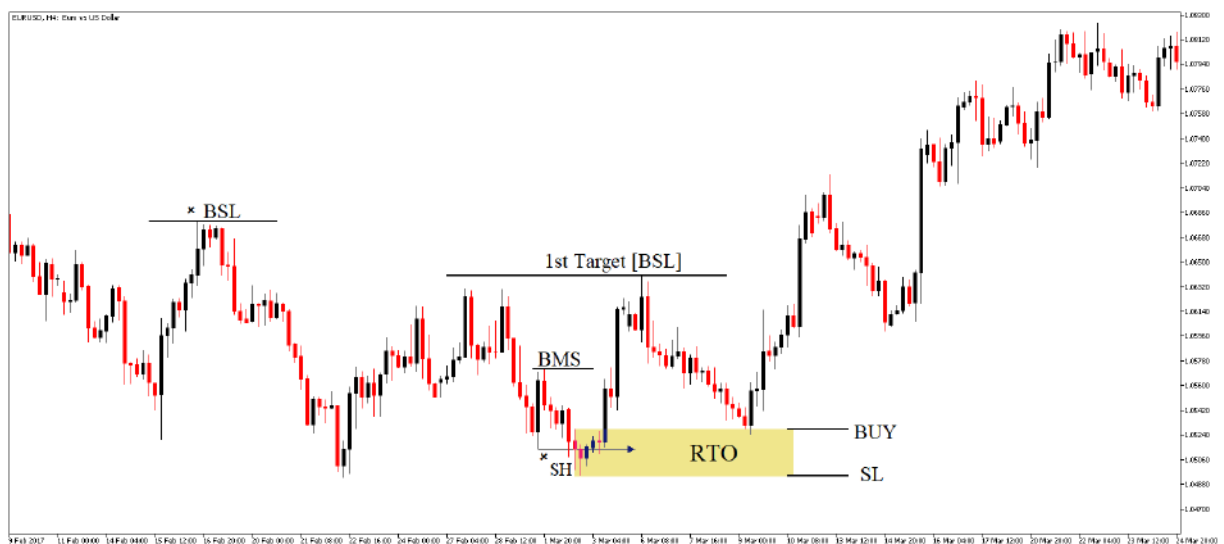
Turtle Soup Long and Bullish Market Structure
LTF Buy opportunities on HTF OTE

Downloaded from <http://ajphaphysocpharm.sagepub.com/> at 11:01 11 November 2014



Confluence: RTO during London Open.

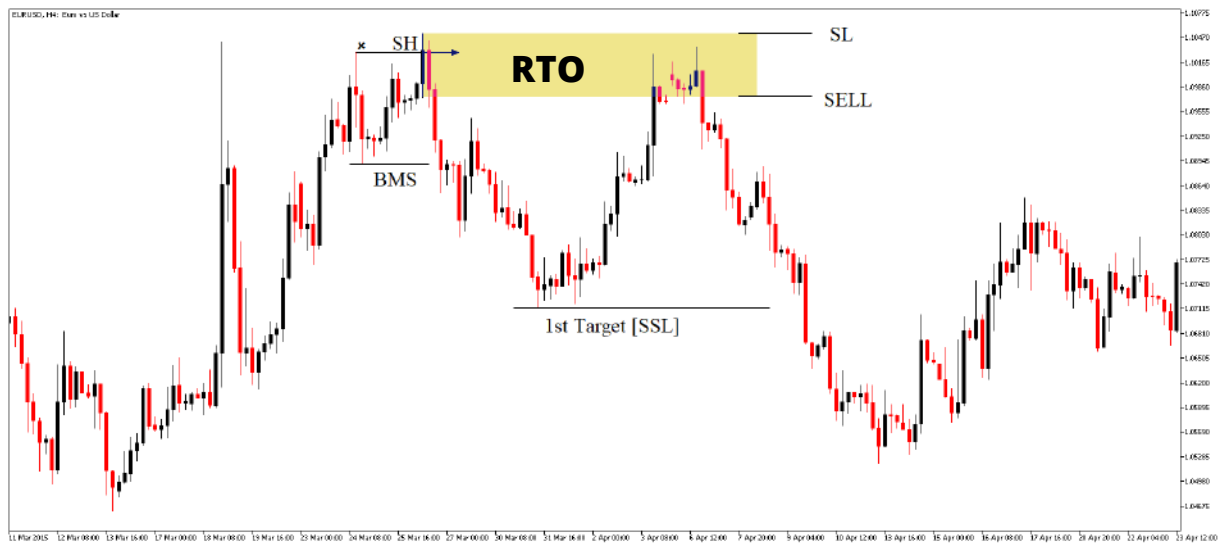
EUR/USD



SH + BMS + RTO

NOTE: The H4 RTO Could be refined in LTF entry.

EUR/USD



SH + BMS + RTO

NOTE: The H4 RTO Could be refined in LTF entry.

EUR/USD



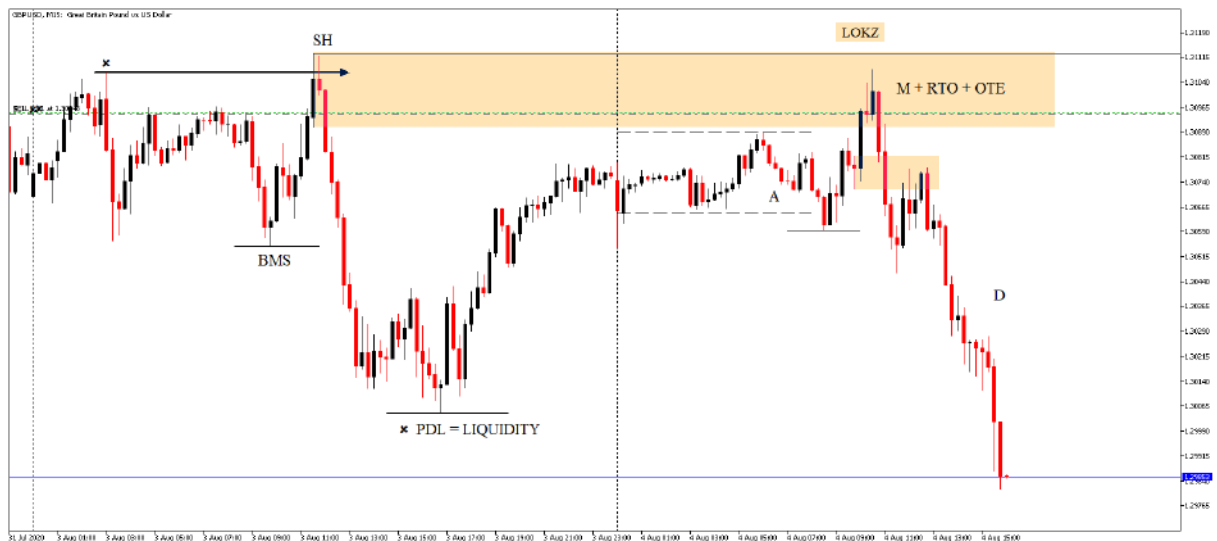
SH + BMS + RTO.

NOTE: Trade during London Open, New York Open, High Impact News Events.



NOTE: Trade during London Open, New York Open, High Impact News Events.

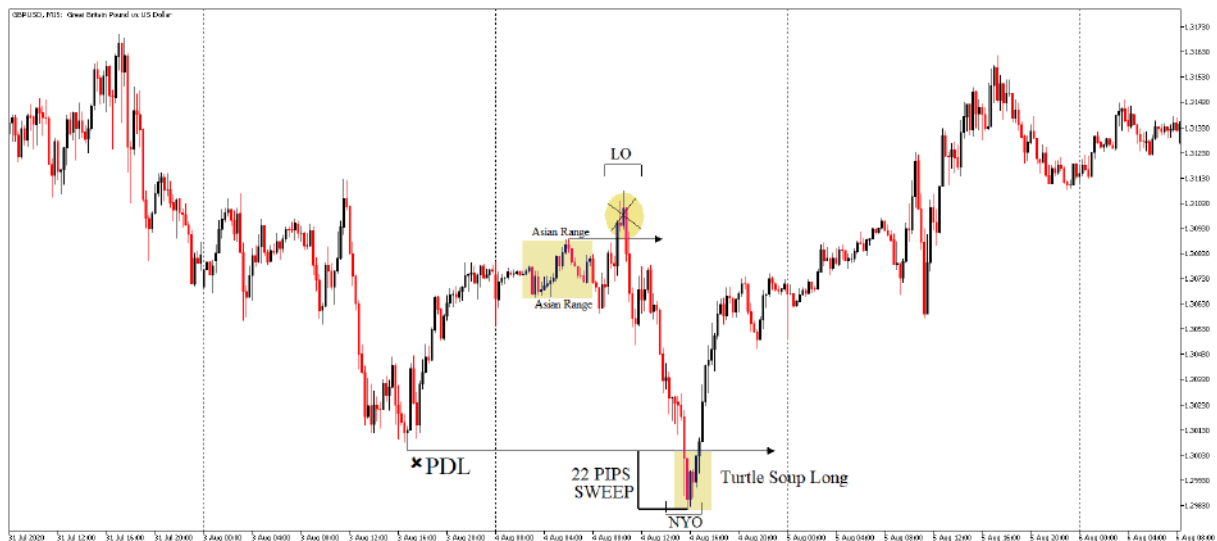
GBP/USD



SH + BMS + RTO combined with AMD.

NOTE: Trade during London Open, New York Open, High Impact News Events.

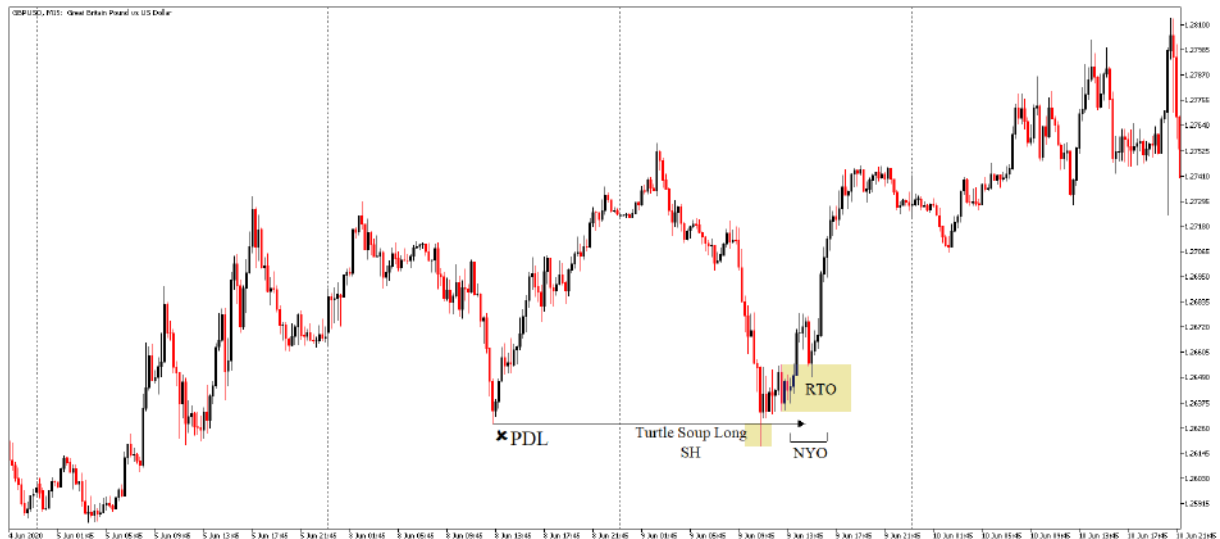
GBP/USD



PDL Liquidity run = SH = Turtle Soup Long.

NOTE: Trade during London Open, New York Open, High Impact News Events.

GBP/USD



PDL Liquidity run = SH, After SH, Buy every OB in LTF.

NOTE: Trade during London Open, New York Open, High Impact News Events.

EUR/USD



The Market Hardly reverses without taking Liquidity!
After HTF SH look for LTF entry setups.

Thank You For Reading



WADE_FX_SETUPS

Written By: WADE_FX_SETUPS

Twitter: <https://twitter.com/wadefxsetups>

Instagram: https://www.instagram.com/wade_fx_setups/

Telegram Channel: <https://t.me/wadefxsetups>