

pipware dashboard

Version 3.0

Quick Start

Installation

You should have the executable file on your computer as follows:

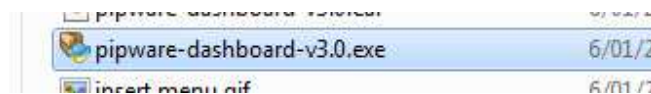


FIGURE 1 PIPWARE DASHBOARD INSTALLER FILE

Double-click the file to start the installation process:

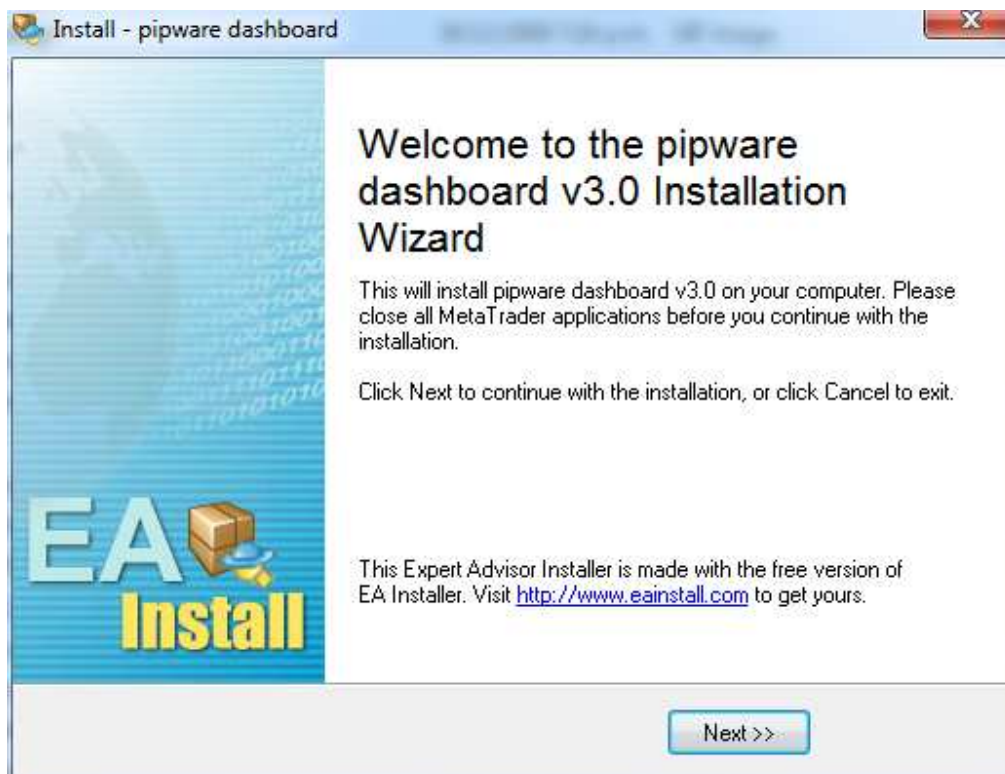


FIGURE 2 DASHBOARD INSTALLER OPENED

Click Next to display the risk disclaimer.

You must accept the risk disclaimer and click next to continue.

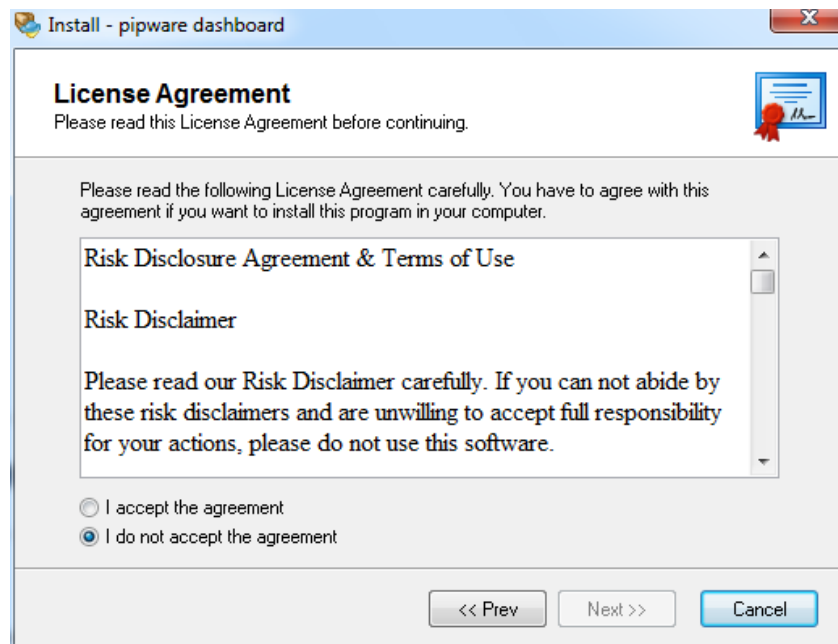


FIGURE 3 DASHBOARD INSTALLATION RISK DISCLAIMER

Choose the metatrader installations that the pipware dashboard should be installed into and click next.

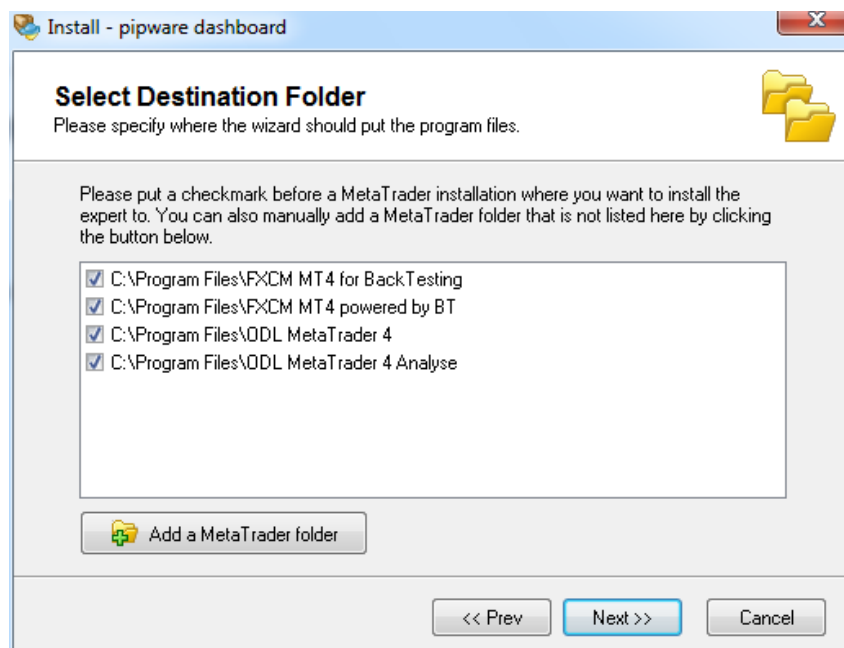


FIGURE 4 DASHBOARD INSTALLATION - CHOOSE MT4 INSTALLATIONS

Confirm that the installation choices are correct and click next.

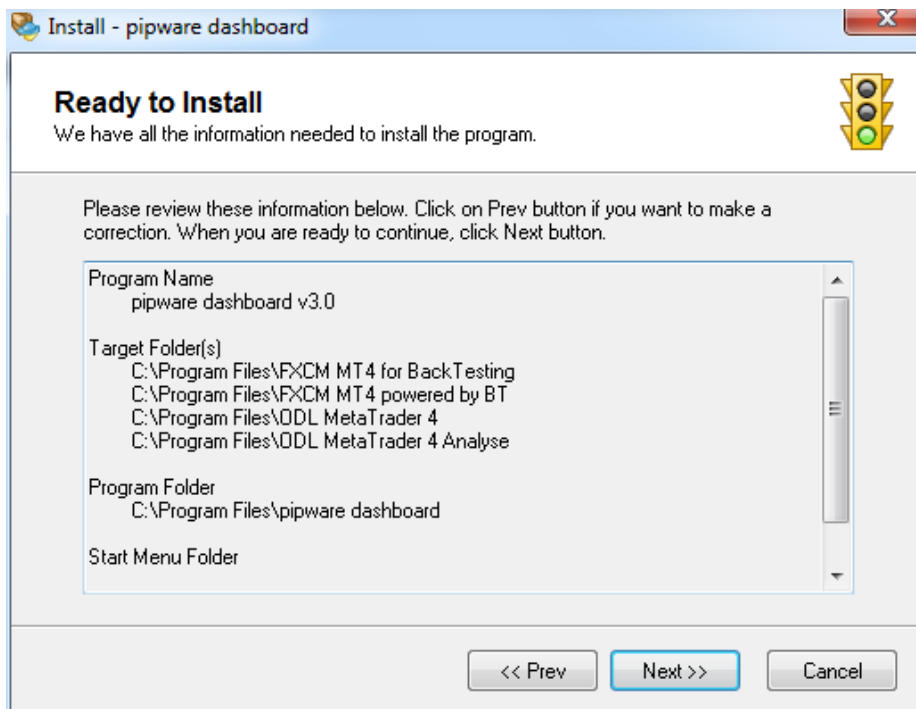


FIGURE 5 DASHBOARD INSTALLATION - CONFIRM CHOICES

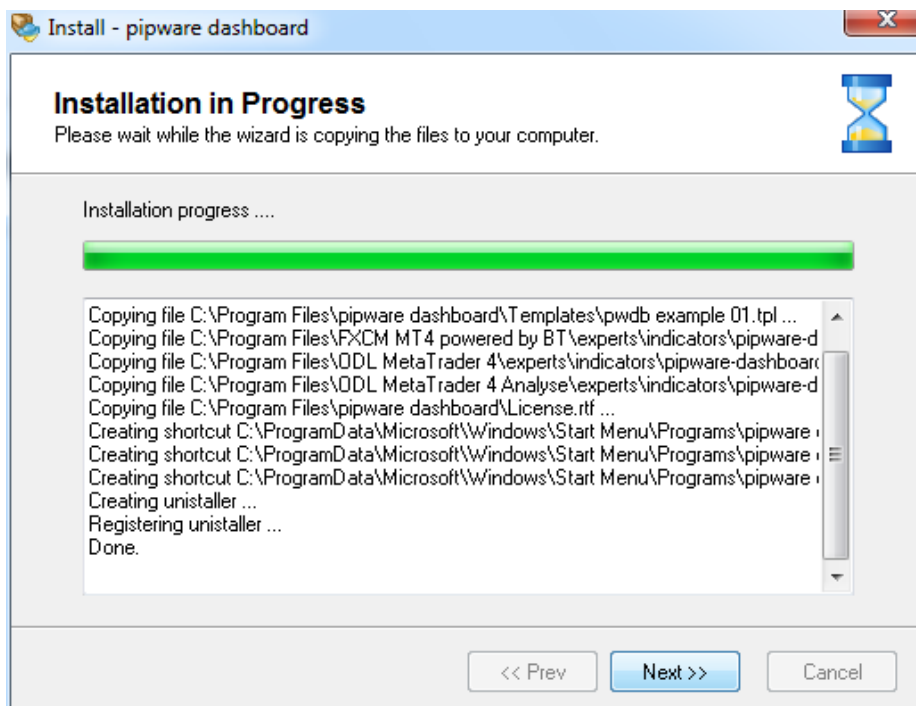


FIGURE 6 DASHBOARD INSTALLATION - INSTALLATION PROGRESS

Choose whether to run a metatrader platform and click finish to complete the installation.



FIGURE 7 DASHBOARD INSTALLATION - COMPLETION

Configuration

Using the default settings, the pipware dashboard is placed in the first indicator window. It shares the window with any indicator that may be there. This is so that the right hand side of the indicator window is not wasted with blank space. At pipware, we use a stochastics oscillator set to 8,3,3.



FIGURE 8 MT4 WITH ONE INDICATOR WINDOW (STOCHASTICS)

Add the pipware dashboard via the insert menu.

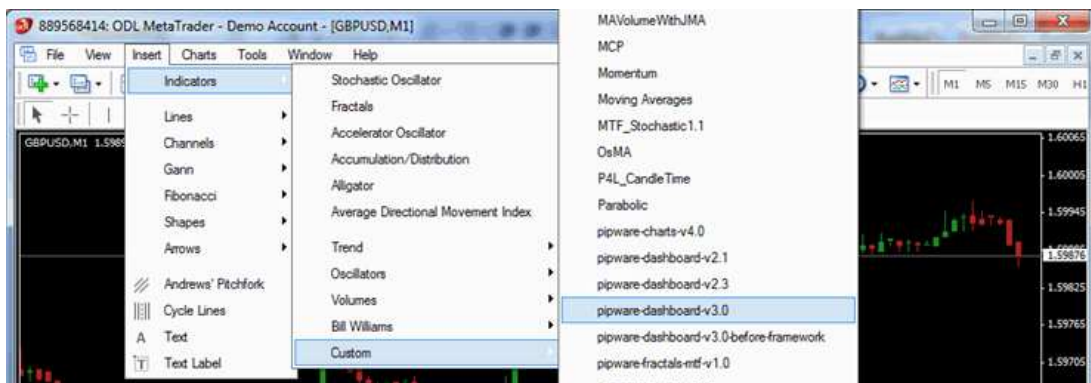


FIGURE 9 ADDING THE DASHBOARD TO A WINDOW

When the custom indicator settings box opens, go to the 'Common' tab and make sure the boxes are ticked like the picture below.

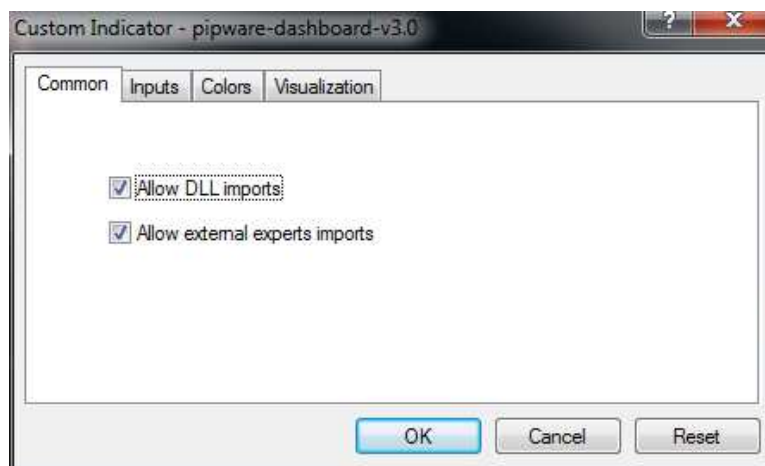


FIGURE 10 ALLOW DLL IMPORTS

IMPORTANT: 'Allow DLL imports' must be ticked for the dashboard to function correctly. If you continue without 'Allow DLL imports' ticked, a message will appear telling you that the indicator will exit.

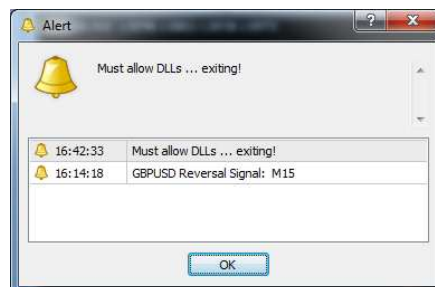


FIGURE 11 ALERT WHEN 'ALLOW DLL IMPORTS' NOT TICKED