

Tekolo - Ichimoku + ADX





Buy

Entries

Sell

Settings: Strategy

ab	-	===== Strategy settings =====
	use: Tenkan crosses over Kijun	true
	use: Tenkan & Kijun > Kumo	true
	use: Close > Kumo	true
	use: Chikou > Kumo (-n periods)	true
ab	-	===== ADX - Settings =====
123	ADX period	14
	Filter: ADX greater N	false
123	ADX border value:N	22
	Filter: ADX DI+ / DI-	false

Basic conditions for buy
(vice versa for sell)

ADX ≥ 22 for buy AND sell signal

DI+ > DI- for buy (and vice versa:
DI+ < DI- for sell)



TP

Exits

SL

Exit: Fixed TP and fixed SL

***** SL/TP - Settings *****	
123 Type of sl	Fixed Points
123 No of candles for sl/tp	5
123 Fixed SL in Points	700
123 Type of tp	Fixed Points
123 Fixed TP in Points	50
1/2 Risk Ratio entry/sl against entry/tp	2.0

700 Points SL and 50 Points TP



500 Points TP

700 Points SL

Exit: Fixed SL and TP calculated as RR

***** SL/TP - Settings *****	
Type of sl	Fixed Points
No of candles for sl/tp	5
Fixed SL in Points	700
Type of tp	Fixed RR(SL has set to fixed!)
Fixed TP in Points	500
Risk Ratio entry/sl against entry/tp	2.0

700 Points SL and $2 \times 700 = 1400$ Points TP;
2 is taken from RR



1400 Points TP

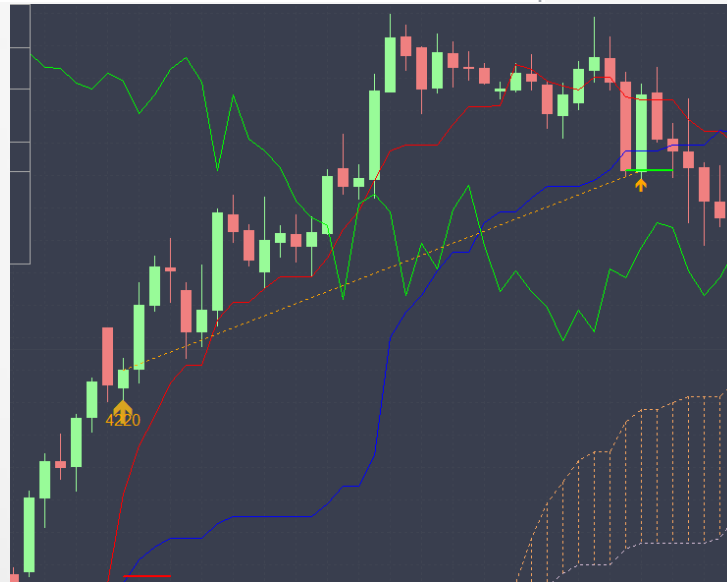
700 Points SL

Exit: Price under Kijun and SL min.(max.) of last X candles

***** SL/TP - Settings *****	
Type of sl	Min./ max. last 5 candles
No of candles for sl/tp	5
Fixed SL in Points	700
Type of tp	Price under Kijun
Fixed TP in Points	500
Risk Ratio entry/sl against entry/tp	2.0

SL under min./max. of last 5 candles; tp is when price=bar is under/over Kijun

SL 5 candles
before trigger candle



Price drops under Kijun(blue)

Exit(Added V4.01): Price under MA X shifted Y Bars right

***** SL/TP - Settings *****	
Type of sl	No SL
No of candles for sl/tp	5
Fixed SL in Points	50
Type of tp	Price under/over MA X shifted by Y
Fixed TP in Points	50
Risk Ratio entry/sl against entry/tp	2.0
Period of MA	20
Shift of MA	30

tp is when price=bar under/over MA(X) shifted Y bars to the right



Price drops under MA(20) shifted by 30 Bars to the right