

# **Tekolo - Ichimoku + ADX**





Buy

Entries

Sell

## Settings: Strategy

ab	-	===== Strategy settings =====
	use: Tenkan crosses over Kijun	true
	use: Tenkan & Kijun > Kumo	true
	use: Close > Kumo	true
	use: Chikou > Kumo (-n periods)	true
ab	-	***** ADX - Settings *****
123	ADX period	14
	Filter: ADX greater N	false
123	ADX border value:N	22
	Filter: ADX DI+/DI-	false

Basic conditions for buy  
(vice versa for sell)

ADX  $\geq 22$  for buy AND sell signal

DI+ > DI- for buy (and vice versa:  
DI+ < DI- for sell)



TP

Exits

SL

## Exit: Fixed TP and fixed SL

***** SL/TP - Settings *****	
Type of sl	Fixed Points
No of candles for sl/tp	5
Fixed SL in Points	700
Type of tp	Fixed Points
Fixed TP in Points	50
Risk Ratio entry/sl against entry/tp	2.0

700 Points SL and 50 Points TP



500 Points TP

700 Points SL

## Exit: Fixed SL and TP calculated as RR

***** SL/TP - Settings *****	
Type of sl	Fixed Points
No of candles for sl/tp	5
Fixed SL in Points	700
Type of tp	Fixed RR(SL has set to fixed!)
Fixed TP in Points	500
Risk Ratio entry/sl against entry/tp	2.0

700 Points SL and  $2 \times 700 = 1400$  Points TP;  
2 is taken from RR



1400 Points TP

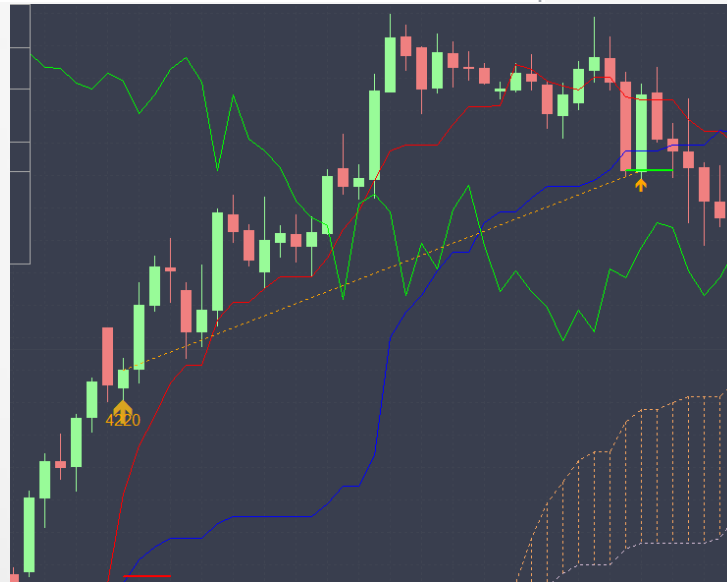
700 Points SL

## Exit: Price under Kijun and SL min.(max.) of last X candles

***** SL/TP - Settings *****	
Type of sl	Min./ max. last 5 candles
No of candles for sl/tp	5
Fixed SL in Points	700
Type of tp	Price under Kijun
Fixed TP in Points	500
Risk Ratio entry/sl against entry/tp	2.0

SL under min./max. of last 5 candles; tp is when price=bar is under/over Kijun

SL 5 candles  
before trigger candle



Price drops under Kijun(blue)