

Mjyoung's Dashboard Trading Style

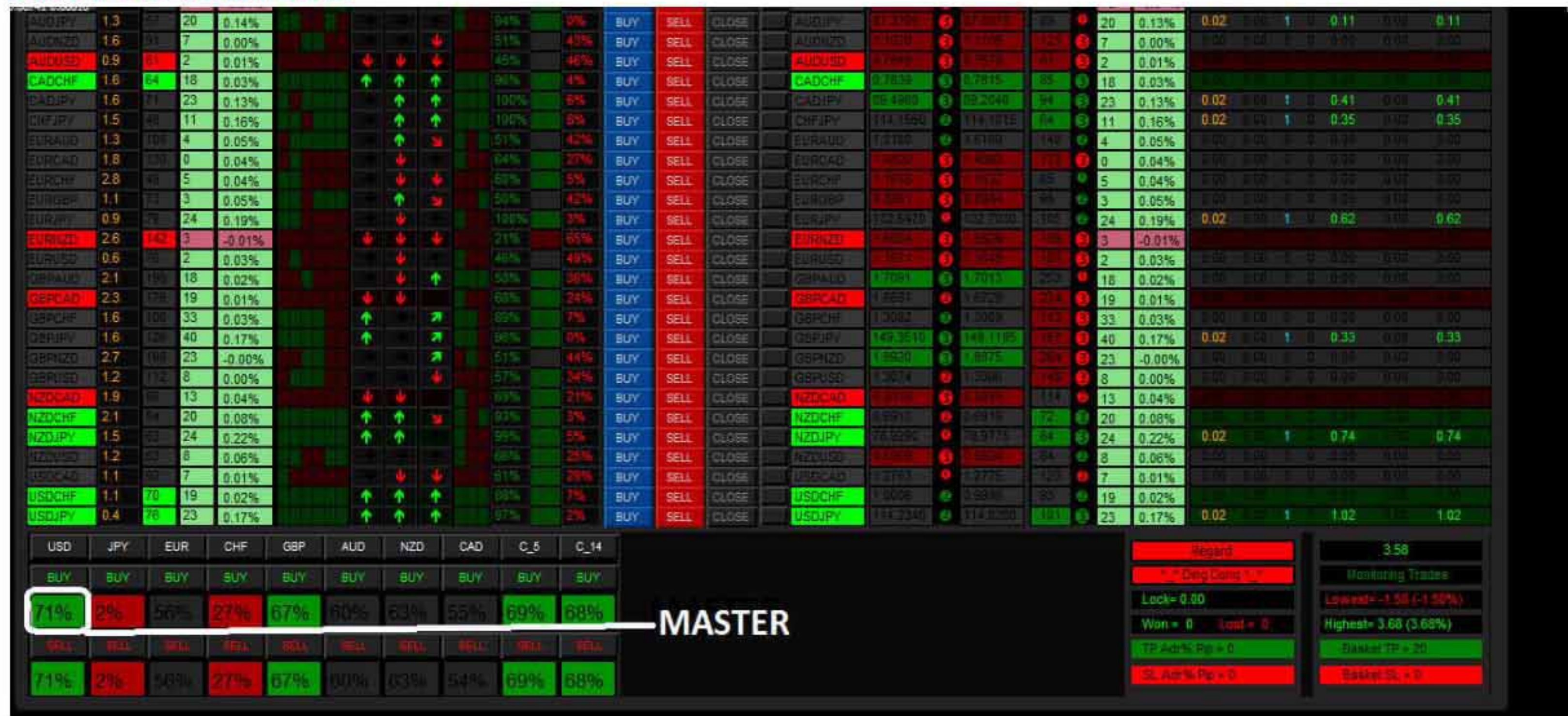
Warning: This manual is for educational purpose. You are purely responsible for your decisions whether they lead you to profit or loss. The opened trades in each of the charts used for illustrations did not necessarily follow the rules explained. Just strictly follow the indicated lines and words in white. You cannot sell this manual. You can only give it out free as gift to help traders still struggling with forex trading.

Thank you.

KNOWLEDGE OF MASTER

Master percentage : 70 and above

MASTER: EXAMPLE 1



MASTER: EXAMPLE 2



MASTER: EXAMPLE 3

Symbol	Spread	Adr	Pip	Ch%	Trend	TS	TL	PA	CLOSE PROFIT	CLOSE ALL	CLOSE LOSS	Price	Daily	Pivot	ADR	Weekly	Ch%	Lots	Orders	Profit	
B	S	B	S	B	S																
AUDCAD	1.3	8	0	-0.09%		↑	↓	↓	7%	89%	BUY	SELL	CLOSE	AUDCAD	0.9191	0.9191	0.00%	0.02	1	0.46	0.46
AUDCHF	1.1	8	3	-0.04%		↑	↓	↓	15%	89%	BUY	SELL	CLOSE	AUDCHF	0.7695	0.7695	0.15%	0.00	0.00	0.00	0.00
AUDJPY	0.8	8	12	0.13%		↑	↓	↓	52%	44%	BUY	SELL	CLOSE	AUDJPY	87.5580	87.4190	0.34%	0.00	0.00	0.00	0.00
AUDNZD	0.8	8	14	0.08%		↑	↓	↓	51%	47%	BUY	SELL	CLOSE	AUDNZD	1.1270	1.1200	0.08%	0.00	0.00	0.00	0.00
CADCHF	1.5	54	5	0.06%		↑	↑	↑	4%	84%	BUY	SELL	CLOSE	CADCHF	0.7854	0.7854	0.22%	0.00	0.02	1.56	1.56
CADJPY	1.3	84	20	0.22%		↑	↑	↑	42%	4%	BUY	SELL	CLOSE	CADJPY	88.1010	88.5180	0.36%	0.04	2	1.06	1.06
CHFJPY	1.4	8	22	0.19%		↑	↑	↑	86%	9%	BUY	SELL	CLOSE	CHFJPY	114.7590	114.8810	0.20%	0.00	0.00	0.00	0.00
EURAUD	0.3	25	0.16%			↑	↓	↓	94%	3%	BUY	SELL	CLOSE	EURAUD	1.5117	1.5144	-0.37%	0.00	0.00	0.00	0.00
EURCAD	1.7	8	10	0.07%		↑	↓	↓	51%	42%	BUY	SELL	CLOSE	EURCAD	0.8200	0.8200	-0.40%	0.00	0.00	0.00	0.00
EURCHF	1.8	8	8	0.08%		↑	↓	↓	77%	9%	BUY	SELL	CLOSE	EURCHF	0.8500	0.8500	-0.21%	0.00	0.00	0.00	0.00
EURGBP	1.1	8	5	0.05%		↑	↓	↓	86%	24%	BUY	SELL	CLOSE	EURGBP	1.0000	1.0000	-0.66%	0.00	0.00	0.00	0.00
EURJPY	0.9	8	38	0.27%		↑	↓	↓	90%	9%	BUY	SELL	CLOSE	EURJPY	122.5680	122.5560	-0.03%	0.00	0.00	0.00	0.00
EURNZD	2.2	8	34	0.21%		↑	↓	↓	83%	1%	BUY	SELL	CLOSE	EURNZD	1.0740	1.0740	-0.34%	0.00	0.00	0.00	0.00
EURUSD	0.5	8	13	-0.11%		↑	↓	↓	7%	94%	BUY	SELL	CLOSE	EURUSD	1.1997	1.1997	-0.10%	0.00	0.00	0.00	0.00
GBPAUD	1.8	8	21	0.12%		↑	↑	↑	77%	19%	BUY	SELL	CLOSE	GBPAUD	1.7145	1.7145	0.32%	0.02	1	0.40	0.40
GBPCAD	2.3	8	1	0.01%		↑	↓	↓	24%	69%	BUY	SELL	CLOSE	GBPCAD	1.6737	1.6737	0.29%	0.00	0.00	0.00	0.00
GBPCHF	1.7	114	7	0.05%		↑	↓	↓	13%	39%	BUY	SELL	CLOSE	GBPCHF	1.3145	1.3145	0.50%	0.00	0.00	0.00	0.00
GBPJPY	1.5	8	40	0.27%		↑	↓	↓	81%	16%	BUY	SELL	CLOSE	GBPJPY	150.1100	149.6250	0.68%	0.00	0.00	0.00	0.00
GBPNZD	3.7	8	32	0.17%		↑	↓	↓	72%	22%	BUY	SELL	CLOSE	GBPNZD	1.8950	1.8950	0.38%	0.00	0.00	0.00	0.00
GBPUSD	0.9	8	19	0.15%		↑	↓	↓	16%	82%	BUY	SELL	CLOSE	GBPUSD	1.3151	1.3151	0.59%	0.00	0.00	0.00	0.00
NZDCAD	1.9	8	8	-0.13%		↑	↓	↓	14%	81%	BUY	SELL	CLOSE	NZDCAD	0.8810	0.8810	-0.06%	0.00	0.00	0.00	0.00
NZDCHF	1.8	8	3	-0.07%		↑	↓	↓	22%	79%	BUY	SELL	CLOSE	NZDCHF	0.8500	0.8500	0.17%	0.00	0.00	0.00	0.00
NZDJPY	1.4	8	11	0.11%		↑	↓	↓	67%	96%	BUY	SELL	CLOSE	NZDJPY	99.0000	99.0000	0.35%	0.00	0.00	0.00	0.00
NZDUSD	0.9	8	19	-0.29%		↑	↓	↓	6%	89%	BUY	SELL	CLOSE	NZDUSD	1.6204	1.6204	0.27%	0.00	0.00	0.00	0.00
USDCAD	1.1	8	21	0.10%		↑	↓	↓	95%	9%	BUY	SELL	CLOSE	USDCAD	1.3724	1.3724	-0.30%	0.00	0.00	0.00	0.00
USDCHF	1.1	8	22	0.22%		↑	↓	↓	90%	1%	BUY	SELL	CLOSE	USDCHF	0.8584	0.8584	-0.10%	0.00	0.00	0.00	0.00
USDJPY	0.4	8	45	0.40%		↑	↓	↓	97%	3%	BUY	SELL	CLOSE	USDJPY	114.1410	114.2150	0.08%	0.00	0.00	0.00	0.00

Report

Long Dong = 0

Lock = 0.00

Won = 0Lost = 0

TP Add% Pip = 10

SL Add% Pip = 10

2.66

Monitoring Trades

Lowest = -38.11 (-25.34%)

Highest = 3.36 (3.51%)

TP Add% Pip = 10

SL Add% Pip = 10

MASTERS

KNOWLEDGE OF SLAVE

Slave percentage : 30 and below

SLAVE: EXAMPLE 1

Symbol	Spread	Adr	Pip	Ch%	Trend	TS	TL	PA	CLOSE PROFIT	CLOSE ALL	CLOSE LOSS	Price	Pivot	ADR	Pip	Ch%	B	S	B	S	B	S	
AUDCAD	1.2	8	14	0.10%		↑	↓	↓	89%	35%	BUY	SELL	CLOSE	AUDCAD	0.9191	0.9191	0.10%	0.00	0.00	0.00	0.00	0.00	0.00
AUDCHF	1.2	8	37	0.27%		↑	↓	↓	97%	1%	BUY	SELL	CLOSE	AUDCHF	0.7675	0.7675	0.27%	0.00	0.00	0.00	0.00	0.00	0.00
AUDJPY	0.8	8	26	0.21%		↑	↓	↓	95%	43%	BUY	SELL	CLOSE	AUDJPY	87.4450	87.6970	0.21%	0.00	0.00	0.00	0.00	0.00	0.00
AUDNZD	0.9	8	50	0.39%		↑	↓	↓	81%	18%	BUY	SELL	CLOSE	AUDNZD	1.1113	1.1100	0.39%	0.00	0.00	0.00	0.00	0.00	0.00
AUDUSD	0.6	8	17	0.20%		↑	↓	↓	96%	2%	BUY	SELL	CLOSE	AUDUSD	0.7854	0.7854	0.20%	0.00	0.00	0.00	0.00	0.00	0.00
CADCHF	1.2	84	34	0.23%		↑	↑	↑	92%	5%	BUY	SELL	CLOSE	CADCHF	0.7854	0.7815	0.50%	0.00	0.00	0.00	0.00	0.00	0.00
CADJPY	1.1	84	22	0.13%		↑	↑	↑	48%	55%	BUY	SELL	CLOSE	CADJPY	88.4830	88.2040	0.34%	0.00	0.00	0.00	0.00	0.00	0.00
GBPJPY	1.1	48	13	-0.04%		↑	↓	↓	11%	87%	BUY	SELL	CLOSE	GBPJPY	151.3300	151.0010	0.64%	0.00	0.00	0.00	0.00	0.00	0.00
GBPAUD	1.1	105	48	-0.30%		↑	↓	↓	3%	95%	BUY	SELL	CLOSE	GBPAUD	1.7145	1.7145	-0.30%	0.02	1	1.97	1.97	1.97	1.97
GBPCAD	1.1	8	39	-0.22%		↑	↓	↓	4%	95%	BUY	SELL	CLOSE	GBPCAD	1.6737	1.6737	-0.22%	0.02	1	1.61	1.61	1.61	1.61
GBPCHF	2.4	8	2	-0.02%		↑	↓	↓	4%	87%	BUY	SELL	CLOSE	GBPCHF	1.3145	1.3145	-0.02%	0.00	0.00	0.00	0.00	0.00	0.00
GBPGBP	0.8	8	30	-0.33%		↑	↓	↓	15%	83%	BUY	SELL	CLOSE	GBPGBP	0.8500	0.8500	-0.33%	0.00	0.00	0.00	0.00	0.00	0.00
GBPJPY	0.6	79	11	-0.08%		↑	↓	↓	5%	96%	BUY	SELL	CLOSE	GBPJPY	152.5000	152.5000	-0.08%	0.02	1	0.33	0.33	0.33	0.33
GBPNZD	1.5	144	12	0.05%		↑	↓	↓	16%	82%	BUY	SELL	CLOSE	GBPNZD	1.8910	1.8929	0.12%	0.00	0.02	1	2.14	2.14	2.14
EURUSD	0.4	78	20	-0.13%		↑	↓	↓	15%	81%	BUY	SELL	CLOSE	EURUSD	1.0740	1.0740	-0.13%	0.02	1	1.60	1.60	1.60	1.60
GBPAUD	1.6	8	25	0.05%		↑	↓	↓	35%	84%	BUY	SELL	CLOSE	GBPAUD	1.7090	1.7013	0.25%	0.00	0.00	0.00	0.00	0.00	0.00
GBPCAD	1.8	118	38	0.13%		↑	↓	↓	50%	84%	BUY	SELL	CLOSE	GBPCAD	1.6700	1.6729	0.38%	0.00	0.00	0.00	0.00	0.00	0.00
GBPCHF	1.7	100	74	0.34%		↑	↓	↓	76%	38%	BUY	SELL	CLOSE	GBPCHF	1.3133	1.3069	0.44%	0.00	0.00	0.00	0.00	0.00	0.00
GBPJPY	1.0	8	50	0.28%		↑	↓	↓	62%	37%	BUY	SELL	CLOSE	GBPJPY	149.5100	149.1100	0.29%	0.00	0.00	0.00	0.00	0.00	0.00
GBPNZD	1.9	8	104	0.43%		↑	↓	↓	72%	27%	BUY	SELL	CLOSE	GBPNZD	1.9002	1.8975	0.64%	0.00	0.00	0.00	0.00	0.00	0.00
GBPAUD	0.9	112	37	0.22%		↑	↓	↓	68%	53%	BUY	SELL	CLOSE	GBPAUD	1.7100	1.7090	0.37%	0.00	0.00	0.00	0.00	0.00	0.00
NZDCAD	1.1	8	14	-0.27%		↑	↓	↓	73%	59%	BUY	SELL	CLOSE	NZDCAD	0.8810	0.8810	-0.27%	0.00	0.00	0.00	0.00	0.00	0.00
NZDCHF	1.3	84	12	-0.03%		↑	↓	↓	66%	29%	BUY	SELL	CLOSE	NZDCHF	0.8500	0.8500	-0.03%	0.00	0.00	0.00	0.00	0.00	0.00
NZDJPY	1.1	8	1	-0.09%		↑	↓	↓	17%	61%	BUY	SELL	CLOSE	NZDJPY	99.0000	99.0000	-0.09%	0.00	0.00	0.00	0.00	0.00	0.00
NZDUSD	0.8	8	6	-0.15%		↑	↓	↓	52%	46%	BUY	SELL	CLOSE	NZDUSD	1.6224	1.6224	-0.15%	0.00	0.00	0.00	0.00	0.00	0.00
USDCAD	0.8	8	7	-0.10%		↑	↓	↓	22%	78%	BUY	SELL	CLOSE	USDCAD	1.3750	1.3750	-0.10%	0.00	0.00	0.00	0.00	0.00	0.00
USDCHF	0.9	8	29	0.12%		↑	↓	↓	69%	29%	BUY	SELL	CLOSE	USDCHF	1.0010	1.0010	0.12%	0.00	0.00	0.00	0.00	0.00	0.00
USDJPY	0.4	78	11	0.06%		↑	↓	↓	20%	80%	BUY	SELL	CLOSE	USDJPY	114.1000	114.0200	0.11%	0.00	0.00	0.00	0.00	0.00	0.00

Report

Long Dong = 0

Lock = 0.00

Won = 0 Lost = 0

TP Add% Pip = 5

SL Add% Pip = 5

6.99

Monitoring Trades

Lowest = -7.26 (-7.22%)

Highest = 14.12 (14.05%)

TP Add% Pip = 5

SL Add% Pip = 5

SLAVES

SLAVE: EXAMPLE 2

Symbol	Spread	Adr	Pip	Ch%	Trend	TS	TL	PA	CLOSE PROFIT	CLOSE ALL	CLOSE LOSS	Price	Daily	Pivot	ADR	Weekly	Pip	Ch%	Lots	Orders	Profit			
																			B	S	B	S		
AUDCAD	1.3	55	8	-0.09%					7%	89%	BUY	SELL	CLOSE	AUDCAD	0.8763	0.8763	4	0.00%	0.02	1	0.46	0.46		
AUDCHF	1.1	40	3	-0.04%					15%	80%	BUY	SELL	CLOSE	AUDCHF	0.7658	0.7657	62	0.15%	0.00	0.00	0.00	0.00		
AUDJPY	0.8	58	12	0.13%					53%	44%	BUY	SELL	CLOSE	AUDJPY	97.5502	97.4180	17	0.34%	0.00	0.00	0.00	0.00		
AUDNZD	0.8	58	14	0.08%					51%	47%	BUY	SELL	CLOSE	AUDNZD	1.1079	1.1060	16	0.08%	0.00	0.00	0.00	0.00		
AUDUSD	0.8	53	19	-0.25%					4%	94%	BUY	SELL	CLOSE	AUDUSD	0.7871	0.7866	18	0.30%	0.00	0.02	1	0.60	1.56	1.56
CADCHF	1.5	54	5	0.06%					87%	1%	BUY	SELL	CLOSE	CADCHF	0.7854	0.7829	12	0.33	0.04	2	1.06	1.06		
CADJPY	1.3	64	20	0.22%					92%	4%	BUY	SELL	CLOSE	CADJPY	98.7018	98.5190	35	0.36%						
CHFJPY	1.4	52	22	0.19%					85%	9%	BUY	SELL	CLOSE	CHFJPY	114.1892	114.1815	78	0.15	0.00	0.00	0.00	0.00		
EURAUD	0.1	101	25	0.16%					94%	3%	BUY	SELL	CLOSE	EURAUD	1.5117	1.5144	269	-0.37%	0.00	0.00	0.00	0.00		
EURCAD	1.7	114	10	0.07%					51%	42%	BUY	SELL	CLOSE	EURCAD	0.8765	0.8763	243	-0.40%	0.00	0.00	0.00	0.00		
EURCHF	1.8	52	8	0.08%					77%	6%	BUY	SELL	CLOSE	EURCHF	0.7658	0.7657	62	-0.21%	0.00	0.00	0.00	0.00		
EURGBP	1.1	62	5	0.05%					68%	24%	BUY	SELL	CLOSE	EURGBP	0.7854	0.7848	107	-0.66%	0.00	0.00	0.00	0.00		
EURJPY	0.7	12	38	0.27%					90%	6%	BUY	SELL	CLOSE	EURJPY	132.3662	132.5563	125	0.4	0.00	0.00	0.00	0.00		
EURNZD	2.2	10	34	0.21%					83%	14%	BUY	SELL	CLOSE	EURNZD	1.6748	1.6769	224	-0.34%	0.00	0.00	0.00	0.00		
EURUSD	0.5	63	13	-0.11%					7%	97%	BUY	SELL	CLOSE	EURUSD	1.1597	1.1592	54	-0.10%	0.00	0.00	0.00	0.00		
GBPAUD	1.8	125	21	0.12%					77%	18%	BUY	SELL	CLOSE	GBPAUD	1.7143	1.7180	365	0.32%	0.02	0.00	1	0.42	0.00	0.42
GBPCAD	2.3	155	11	0.01%					24%	68%	BUY	SELL	CLOSE	GBPCAD	0.8733	0.8718	229	0.29%						
GBPCHE	1.7	114	7	0.05%					13%	38%	BUY	SELL	CLOSE	GBPCHE	1.3142	1.3097	151	0.50%	0.00	0.00	0.00	0.00		
GBPJPY	1.5	125	40	0.27%					81%	16%	BUY	SELL	CLOSE	GBPJPY	150.1185	149.4250	170	0.68%	0.00	0.00	0.00	0.00		
GBPNZD	3.7	189	32	0.17%					72%	23%	BUY	SELL	CLOSE	GBPNZD	1.8978	1.8978	285	0.38%	0.00	0.00	0.00	0.00		
GBPUSD	0.9	120	19	0.15%					16%	82%	BUY	SELL	CLOSE	GBPUSD	1.1511	1.1516	150	0.59%	0.00	0.00	0.00	0.00		
NZDCAD	1.9	79	6	-0.13%					14%	81%	BUY	SELL	CLOSE	NZDCAD	0.8910	0.8918	108	-0.06%	0.00	0.00	0.00	0.00		
NZDCHF	1.8	52	3	-0.07%					22%	79%	BUY	SELL	CLOSE	NZDCHF	0.6925	0.6912	177	0.17%	0.00	0.00	0.00	0.00		
NZDJPY	1.4	86	11	0.11%					57%	36%	BUY	SELL	CLOSE	NZDJPY	97.0203	97.0759	58	0.34						
NZDUSD	0.9	73	19	-0.29%					8%	89%	BUY	SELL	CLOSE	NZDUSD	0.7832	0.7832	117	0.27%	0.00	0.00	0.00	0.00		
USDCAD	1.1	65	21	0.16%					95%	0%	BUY	SELL	CLOSE	USDCAD	1.2724	1.2731	109	-0.30%	0.00	0.00	0.00	0.00		
USDCHE	1.1	65	22	0.22%					86%	1%	BUY	SELL	CLOSE	USDCHE	0.7654	0.7654	67	-0.10%	0.00	0.00	0.00	0.00		
USDJPY	0.4	88	45	0.40%					97%	3%	BUY	SELL	CLOSE	USDJPY	114.1415	114.2355	113	0.08%						
																						Report		
																						2.66		
																						Monitoring Trades		
																						Lowest= -38.11 (-29.34%)		
																						Highest= 3.36 (3.51%)		
																						Basic TP		
																						SL ADR Pip = 20		

KNOWLEDGE OF REAL MASTER

Both RECTANGLES must have percentage 70 and above.

REAL MASTER: EXAMPLE 1

	Spread	Adr	Pip	Ch%	Trend	TS	TL	PA	CLOSE PROFIT	CLOSE ALL	CLOSE LOSS	Price	Pivot	ADR	Pip	Ch%	B	S	B S	B	S			
AUDCAD	1.2	76	14	0.10%		↑	↓	↗	88%	35%	BUY	SELL	CLOSE	AUDCAD	0.8770	0.8763	100	14	0.10%	0.00	0.00	0.00	0.00	
AUDCHF	1.2	52	37	0.27%		↑	↓	↗	97%	1%	BUY	SELL	CLOSE	AUDCHF	0.7875	0.7878	74	37	0.27%	0.00	0.00	0.00	0.00	
AUDJPY	0.8	57	26	0.21%		↑	↓	↗	55%	43%	BUY	SELL	CLOSE	AUDJPY	97.4420	97.5070	69	26	0.21%	0.00	0.00	0.00	0.00	
AUDNZD	0.9	81	50	0.39%		↑	↓	↗	81%	18%	BUY	SELL	CLOSE	AUDNZD	1.1113	1.1106	121	50	0.39%	0.00	0.00	0.00	0.00	
AUDUSD	0.6	81	17	0.20%		↑	↓	↗	96%	2%	BUY	SELL	CLOSE	AUDUSD	0.7863	0.7878	61	17	0.20%	0.00	0.00	0.00	0.00	
CADCHF	1.2	64	34	0.23%		↑	↓	↗	92%	5%	BUY	SELL	CLOSE	CADCHF	0.7855	0.7815	85	34	0.23%					
CADJPY	1.1	61	22	0.13%		↑	↓	↗	46%	53%	BUY	SELL	CLOSE	CADJPY	98.4930	98.2840	91	22	0.13%					
CHFJPY	1.1	48	13	-0.04%		↓	↓	↘	11%	87%	BUY	SELL	CLOSE	CHFJPY	114.4420	114.4011	64	13	-0.04%					
EURAUD	1.1	101	48	-0.30%		↓	↓	↘	2%	95%	BUY	SELL	CLOSE	EURAUD	1.5122	1.5100	149	48	-0.30%	0.02	1	1.97	1.97	
EURCAD	1.1	101	39	-0.22%		↓	↓	↘	4%	95%	BUY	SELL	CLOSE	EURCAD	1.4763	1.4762	112	39	-0.22%	0.02	1	1.61	1.61	
EURCHF	2.4	114	2	-0.02%		↓	↓	↘	4%	87%	BUY	SELL	CLOSE	EURCHF	1.3142	1.3142	65	2	-0.02%	0.00	0.00	0.00	0.00	
EURGBP	0.8	101	30	-0.33%		↓	↓	↘	15%	83%	BUY	SELL	CLOSE	EURGBP	0.7847	0.7847	105	30	-0.33%	0.00	0.00	0.00	0.00	
EURJPY	0.6	78	11	-0.08%		↓	↓	↘	5%	95%	BUY	SELL	CLOSE	EURJPY	132.3662	132.3700	105	11	-0.08%	0.02	1	0.33	0.33	
EURNZD	1.5	142	12	0.05%		↓	↓	↘	16%	82%	BUY	SELL	CLOSE	EURNZD	1.6913	1.6929	162	12	0.05%	0.00	0.02	1	2.14	2.14
EURUSD	0.4	78	20	-0.13%		↓	↓	↘	15%	84%	BUY	SELL	CLOSE	EURUSD	1.1598	1.1605	110	20	-0.13%	0.02	1	1.60	1.60	
GBPAUD	1.6	124	25	0.05%		↑	↓	↗	38%	51%	BUY	SELL	CLOSE	GBPAUD	1.7098	1.7015	113	25	0.05%	0.00	0.00	0.00	0.00	
GBPCAD	1.8	178	38	0.13%		↑	↓	↗	50%	47%	BUY	SELL	CLOSE	GBPCAD	1.6706	1.6725	214	38	0.13%	0.00	0.00	0.00	0.00	
GBPCHE	1.7	114	74	0.1%		↑	↓	↗	79%	34%	BUY	SELL	CLOSE	GBPCHE	1.3123	1.3159	143	74	0.34%	0.00	0.00	0.00	0.00	
GBPJPY	1.0	125	58	0.28%		↑	↓	↗	62%	37%	BUY	SELL	CLOSE	GBPJPY	149.5129	149.1155	167	58	0.29%	0.00	0.00	0.00	0.00	
GBPNZD	1.9	152	104	0.43%		↑	↓	↗	72%	27%	BUY	SELL	CLOSE	GBPNZD	1.8902	1.8925	264	104	0.43%	0.00	0.00	0.00	0.00	
GBPUSD	0.9	122	37	0.22%		↑	↓	↗	66%	33%	BUY	SELL	CLOSE	GBPUSD	1.1513	1.1506	119	37	0.22%	0.00	0.00	0.00	0.00	
NZDCAD	1.1	86	14	-0.27%		↓	↓	↘	73%	68%	BUY	SELL	CLOSE	NZDCAD	0.8918	0.8905	119	14	-0.27%	0.00	0.00	0.00	0.00	
NZDCHF	1.3	54	12	-0.03%		↓	↓	↘	66%	29%	BUY	SELL	CLOSE	NZDCHF	0.6925	0.6918	72	12	-0.03%	0.00	0.00	0.00	0.00	
NZDJPY	1.1	88	1	-0.09%		↓	↓	↘	17%	81%	BUY	SELL	CLOSE	NZDJPY	97.0203	97.0222	84	1	-0.09%	0.00	0.00	0.00	0.00	
NZDUSD	0.8	88	6	-0.15%		↓	↓	↘	52%	48%	BUY	SELL	CLOSE	NZDUSD	0.7835	0.7839	84	6	-0.15%	0.00	0.00	0.00	0.00	
USDCAD	0.8	62	7	-0.10%		↓	↓	↘	22%	78%	BUY	SELL	CLOSE	USDCAD	1.2750	1.2775	112	7	-0.10%					
USOCHF	0.6	70	29	0.12%		↑	↑	↗	59%	39%	BUY	SELL	CLOSE	USOCHF	1.0016	0.9990	93	29	0.12%					
USDJPY	0.4	75	11	0.06%		↑	↑	↗	22%	80%	BUY	SELL	CLOSE	USDJPY	114.4661	114.9244	101	11	0.06%	0.00	0.00	0.00	0.00	

USD	JPY	EUR	CHF	GBP	AUD	NZD	CAD	C_5	C_14
BUY	BUY	BUY	BUY	BUY	BUY	BUY	BUY	BUY	BUY
68%	69%	9%	29%	64%	79%	35%	68%	37%	39%
SELL	SELL	SELL	SELL	SELL	SELL	SELL	SELL	SELL	SELL
68%	69%	9%	29%	64%	79%	35%	68%	37%	38%

Repair

Lock = 0.0

Won = 0 Lost = 0

TP ADR Pip = 0

SL ADR Pip = 0

6.99

Monitoring Trades

Lowest= -7.26 (-7.22%)

Highest= 14.12 (14.05%)

Best TP Pip = 7.5

Best SL Pip = 1.5

REAL MASTER

REAL MASTER: EXAMPLE 2

Symbol	Spread	Adr	Pip	Ch%	Trend	TS	TL	PA	CLOSE PROFIT	CLOSE ALL	CLOSE LOSS	Price	Daily	Pivot	ADR	Weekly	Pip	Ch%	Lots	Orders	Profit			
																			B	S	B	S	B	S
USDCAD	1.3	58	8	-0.09%					7%	69%	BUY	SELL	CLOSE	AUDCAD	0.8115	0.8115	4	0.00%	0.02	1	0.46	0.46		
AUDCHF	1.1	48	3	-0.04%					15%	60%	BUY	SELL	CLOSE	AUDCHF	0.7666	0.7667	28	0.15%	0.00	0	0.00	0.00	0.00	0.00
AUDJPY	0.8	58	12	0.13%					53%	44%	BUY	SELL	CLOSE	AUDJPY	0.7555	0.7555	77	0.34%	0.00	0	0.00	0.00	0.00	0.00
AUDNZD	0.8	50	14	0.08%					51%	47%	BUY	SELL	CLOSE	AUDNZD	1.1679	1.1680	16	0.08%	0.00	0	0.00	0.00	0.00	0.00
AUDUSD	0.8	51	19	-0.25%					4%	94%	BUY	SELL	CLOSE	AUDUSD	0.7571	0.7571	24	0.30%	0.00	0.02	1	1.56	1.56	
CADCHF	1.5	54	5	0.06%					87%	1%	BUY	SELL	CLOSE	CADCHF	0.7454	0.7455	33	0.22%	0.00	0	0.00	0.00	0.00	0.00
CADJPY	1.3	64	20	0.22%					82%	4%	BUY	SELL	CLOSE	CADJPY	0.7401	0.7409	43	0.36%	0.04	2	1.06	1.06	1.06	1.06
CHFJPY	1.4	50	22	0.19%					65%	9%	BUY	SELL	CLOSE	CHFJPY	0.8155	0.8155	78	0.15%	0.00	0	0.00	0.00	0.00	0.00
EURAUD	0.7	103	25	0.16%					94%	3%	BUY	SELL	CLOSE	EURAUD	1.5117	1.5114	59	-0.37%	0.00	0	0.00	0.00	0.00	0.00
EURCAD	1.7	23	10	0.07%					51%	42%	BUY	SELL	CLOSE	EURCAD	1.4755	1.4755	65	-0.40%	0.00	0	0.00	0.00	0.00	0.00
EURCHF	1.8	50	8	0.08%					77%	8%	BUY	SELL	CLOSE	EURCHF	0.7385	0.7385	24	-0.21%	0.00	0	0.00	0.00	0.00	0.00
EURGBP	1.1	80	5	0.05%					66%	24%	BUY	SELL	CLOSE	EURGBP	0.7327	0.7326	107	-0.86%	0.00	0	0.00	0.00	0.00	0.00
EURJPY	0.7	101	38	0.27%					80%	8%	BUY	SELL	CLOSE	EURJPY	1.3246	1.3245	131	-0.03%	0.00	0	0.00	0.00	0.00	0.00
EURNZD	2.2	10	34	0.21%					83%	11%	BUY	SELL	CLOSE	EURNZD	1.5748	1.5748	53	-0.34%	0.00	0	0.00	0.00	0.00	0.00
EURUSD	0.5	51	13	-0.11%					71%	9%	BUY	SELL	CLOSE	EURUSD	1.1597	1.1597	17	-0.10%	0.00	0	0.00	0.00	0.00	0.00
GBPAUD	1.8	125	21	0.12%					77%	18%	BUY	SELL	CLOSE	GBPAUD	1.7143	1.7143	205	0.32%	0.02	0	0.42	0.42	0.42	0.42
GBPCAD	2.3	105	1	0.01%					24%	68%	BUY	SELL	CLOSE	GBPCAD	1.6731	1.6716	65	0.29%	0.00	0	0.00	0.00	0.00	0.00
GBPCHF	1.7	114	7	0.05%					23%	39%	BUY	SELL	CLOSE	GBPCHF	1.3143	1.3097	94	0.50%	0.00	0	0.00	0.00	0.00	0.00
GBPJPY	1.5	121	40	0.27%					81%	16%	BUY	SELL	CLOSE	GBPJPY	150.1180	149.4050	115	0.68%	0.00	0	0.00	0.00	0.00	0.00
GBPNZD	3.7	15	32	0.17%					72%	23%	BUY	SELL	CLOSE	GBPNZD	1.8950	1.8937	25	0.38%	0.00	0	0.00	0.00	0.00	0.00
GBPUSD	0.9	120	19	0.15%					16%	62%	BUY	SELL	CLOSE	GBPUSD	1.3151	1.3116	165	0.59%	0.00	0	0.00	0.00	0.00	0.00
NZDCAD	1.9	75	6	-0.13%					14%	81%	BUY	SELL	CLOSE	NZDCAD	0.9510	0.9510	4	-0.06%	0.00	0	0.00	0.00	0.00	0.00
NZDCHF	1.8	58	3	-0.07%					22%	78%	BUY	SELL	CLOSE	NZDCHF	0.8820	0.8812	77	0.17%	0.00	0	0.00	0.00	0.00	0.00
NZDJPY	1.4	58	11	0.11%					57%	36%	BUY	SELL	CLOSE	NZDJPY	0.9289	0.9289	58	0.35%	0.00	0	0.00	0.00	0.00	0.00
NZDUSD	0.9	71	19	-0.29%					8%	89%	BUY	SELL	CLOSE	NZDUSD	0.8824	0.8816	17	0.27%	0.00	0	0.00	0.00	0.00	0.00
USDCAD	1.1	95	21	0.18%					94%	6%	BUY	SELL	CLOSE	USDCAD	1.3734	1.3733	33	-0.30%	0.00	0	0.00	0.00	0.00	0.00
USDCHE	1.1	98	22	0.22%					96%	1%	BUY	SELL	CLOSE	USDCHE	0.9994	0.9990	97	-0.10%	0.00	0	0.00	0.00	0.00	0.00
USDJPY	0.4	98	45	0.40%					97%	3%	BUY	SELL	CLOSE	USDJPY	114.1410	114.2128	11	0.08%	0.00	0	0.00	0.00	0.00	0.00
REAL MASTER																								
USD	JPY	EUR	CHF	GBP	AUD	NZD	CAD	C_5	C_14															
BUY	BUY	BUY	BUY	BUY	BUY	BUY	BUY	BUY	BUY															
64%	64%	67%	48%	51%	22%	27%	70%	18%	15%															
SELL	SELL	SELL	SELL	SELL	SELL	SELL	SELL	SELL	SELL															
19%	35%	25%	41%	83%	45%	52%	70%	50%	68%															
Report																								
Lock= 0.00																								
Won= 0 Lost= 0																								
TP Adr% Pip = 10																								
SL Adr% Pip = 20																								
2.66																								
Monitoring Trades																								
Lowest= -28.11 (-29.34%)																								
Highest= 3.36 (3.51%)																								
TP Adr% Pip = 10																								
SL Adr% Pip = 20																								

KNOWLEDGE OF REAL SLAVE

Both RECTANGLES must have percentage 30 and above.

REAL SLAVE : EXAMPLE 1

Symbol	Spread	Adr	Pip	Ch%	Trend	TS	TL	PA	CLOSE PROFIT	CLOSE ALL	CLOSE LOSS	Price	Pivot	ADR	Pip	Ch%	B	S	B S	B	S
USDCAD	1.2	78	14	0.10%					85%	35%	BUY	SELL	CLOSE	AUDCAD	0.7578	0.7578	140	14	0.10%	0.00	0.00
AUDCHF	1.2	56	37	0.27%					97%	1%	BUY	SELL	CLOSE	AUDCHF	0.7676	0.7676	74	37	0.27%	0.00	0.00
AUDJPY	0.8	87	26	0.21%					85%	43%	BUY	SELL	CLOSE	AUDJPY	0.74430	0.74430	83	26	0.21%	0.00	0.00
AUDNZD	0.9	81	50	0.39%					81%	18%	BUY	SELL	CLOSE	AUDNZD	1.1112	1.1112	121	50	0.39%	0.00	0.00
AUDUSD	0.8	81	17	0.20%					86%	2%	BUY	SELL	CLOSE	AUDUSD	0.7563	0.7563	61	17	0.20%	0.00	0.00
CADCHF	1.2	84	34	0.23%					82%	5%	BUY	SELL	CLOSE	CADCHF	0.7855	0.7855	86	34	0.23%	0.00	0.00
CADJPY	1.1	81	22	0.13%					48%	53%	BUY	SELL	CLOSE	CADJPY	0.74930	0.74930	94	22	0.13%	0.00	0.00
CHFJPY	1.1	48	13	-0.04%					11%	87%	BUY	SELL	CLOSE	CHFJPY	0.81020	0.81015	64	13	-0.04%	0.00	0.00
GBPAUD	1.1	105	48	-0.30%					5%	95%	BUY	SELL	CLOSE	GBPAUD	1.7120	1.7120	140	48	-0.30%	0.02	1
GBPCAD	1.1	105	38	-0.22%					6%	96%	BUY	SELL	CLOSE	GBPCAD	1.6760	1.6760	139	38	-0.22%	0.02	1
GBPCHF	2.4	114	2	-0.02%					4%	87%	BUY	SELL	CLOSE	GBPCHF	1.3185	1.3185	66	2	-0.02%	0.00	0.00
EURGBP	0.8	12	30	-0.33%					13%	83%	BUY	SELL	CLOSE	EURGBP	0.8947	0.8947	85	30	-0.33%	0.00	0.00
EURJPY	0.6	78	11	-0.08%					5%	85%	BUY	SELL	CLOSE	EURJPY	1.3200	1.3200	105	11	-0.08%	0.02	1
EURNZD	1.5	14	12	0.05%					18%	62%	BUY	SELL	CLOSE	EURNZD	1.8813	1.8824	120	12	0.05%	0.00	0.02
EURUSD	0.4	76	20	-0.13%					15%	31%	BUY	SELL	CLOSE	EURUSD	1.1594	1.1594	101	20	-0.13%	0.02	1
GBPAUD	1.6	105	25	0.05%					35%	11%	BUY	SELL	CLOSE	GBPAUD	1.7098	1.7098	253	25	0.05%	0.00	0.00
GBPCAD	1.6	105	38	0.13%					56%	11%	BUY	SELL	CLOSE	GBPCAD	1.6728	1.6728	237	38	0.13%	0.00	0.00
GBPCHF	1.7	108	74	0.11%					78%	26%	BUY	SELL	CLOSE	GBPCHF	1.3123	1.3123	143	74	0.34%	0.00	0.00
GBPJPY	1.0	125	56	0.28%					62%	37%	BUY	SELL	CLOSE	GBPJPY	149.5150	149.5150	107	56	0.29%	0.00	0.00
GBPNZD	1.9	98	104	0.43%					72%	27%	BUY	SELL	CLOSE	GBPNZD	1.9002	1.9002	264	104	0.43%	0.00	0.00
GBPUSD	0.9	115	37	0.22%					68%	33%	BUY	SELL	CLOSE	GBPUSD	1.3185	1.3185	241	37	0.22%	0.00	0.00
NZDCAD	1.1	88	14	-0.27%					71%	69%	BUY	SELL	CLOSE	NZDCAD	0.9531	0.9531	14	14	-0.27%	0.00	0.00
NZDCHF	1.3	84	12	-0.03%					66%	29%	BUY	SELL	CLOSE	NZDCHF	0.8800	0.8800	72	12	-0.03%	0.00	0.00
NZDJPY	1.1	87	1	-0.09%					77%	61%	BUY	SELL	CLOSE	NZDJPY	0.9272	0.9272	84	1	-0.09%	0.00	0.00
NZDUSD	0.8	85	6	-0.15%					62%	46%	BUY	SELL	CLOSE	NZDUSD	0.8825	0.8825	84	6	-0.15%	0.00	0.00
USDCAD	0.8	82	7	-0.10%					22%	76%	BUY	SELL	CLOSE	USDCAD	1.3764	1.3775	120	7	-0.10%	0.00	0.00
USDCHE	0.9	70	29	0.12%					69%	29%	BUY	SELL	CLOSE	USDCHE	1.0016	1.0016	93	29	0.12%	0.00	0.00
USDJPY	0.4	78	11	0.06%					20%	80%	BUY	SELL	CLOSE	USDJPY	114.1000	114.0380	101	11	0.06%	0.00	0.00

USD

JPY

EUR

CHF

GBP

AUD

NZD

CAD

C_5

C_14

BUY

BUY

BUY

BUY

BUY

BUY

BUY

BUY

BUY

BUY

69%

69%

9%

29%

64%

79%

35%

68%

37%

38%

SELL

SELL

SELL

SELL

SELL

SELL

SELL

SELL

SELL

SELL

69%

69%

9%

29%

64%

79%

35%

68%

37%

38%

REAL SLAVES

Repeat

~ ~ Close Close ~ ~

Lock = 0.0

TP ADR Pip = 0

SL ADR Pip = 0

6.99

Monitoring Trades

Lowest = -7.26 (-7.22%)

Highest = 14.12 (14.05%)

Banket Pip = 0

Banket Pip = 0

REAL SLAVE : EXAMPLE 2

Symbol	Spread	Adr	Pip	Ch%	Trend	TS	TL	PA	CLOSE PROFIT	CLOSE ALL	CLOSE LOSS	Price	Daily	Pivot	ADR	Weekly	Pip	Ch%	Lots	Orders	Profit	S
AUDCAD	1.3	30	0.32%						10%	87%	BUY	SELL	CLOSE	AUDCAD	0.7517	0.7516	30	0.00%	0.00	0.00	0.00	0.00
AUDCHF	1.2	22	-0.31%						12%	84%	BUY	SELL	CLOSE	AUDCHF	0.7517	0.7516	30	0.00%	0.00	0.00	0.00	0.00
AUDJPY	0.7	45	-0.54%						8%	91%	BUY	SELL	CLOSE	AUDJPY	0.7517	0.7516	30	0.00%	0.00	0.00	0.00	0.00
AUDNZD	1.0	5	-0.05%						53%	35%	BUY	SELL	CLOSE	AUDNZD	1.1166	1.1165	105	0.11%	0.01	0.00	1	0.00
AUDUSD	0.7	40	-0.14%						11%	87%	BUY	SELL	CLOSE	AUDUSD	0.7517	0.7516	30	0.00%	0.00	0.00	0.00	0.00
CADCHF	1.7	50	0.02%						57%	29%	BUY	SELL	CLOSE	CADCHF	0.7790	0.7770	20	-0.82%	0.00	0.00	0	0.00
CADJPY	1.1	18	-0.21%						14%	89%	BUY	SELL	CLOSE	CADJPY	0.7790	0.7770	20	-0.82%	0.00	0.00	0	0.00
CHFJPY	1.8	07	-0.19%						15%	80%	BUY	SELL	CLOSE	CHFJPY	0.7790	0.7770	20	-0.82%	0.00	0.00	0	0.00
EURAUD	0.7	107	0.46%						93%	6%	BUY	SELL	CLOSE	EURAUD	1.5562	1.5521	142	2.37%	0.00	0.00	0	0.00
EURCAD	1.3	102	0.14%						76%	19%	BUY	SELL	CLOSE	EURCAD	1.5013	1.5024	136	0.85%	0.00	0.00	0	0.00
EURCHF	1.7	56	0.12%						86%	5%	BUY	SELL	CLOSE	EURCHF	1.5112	1.5172	74	4.04%	0.00	0.00	0	0.00
EURGBP	0.9	40	0.07%						75%	19%	BUY	SELL	CLOSE	EURGBP	0.7517	0.7516	30	0.00%	0.00	0.00	0	0.00
EURJPY	0.7	107	-0.09%						28%	70%	BUY	SELL	CLOSE	EURJPY	0.7517	0.7516	30	0.00%	0.00	0.00	0	0.00
EURNZD	2.6	134	0.40%						63%	4%	BUY	SELL	CLOSE	EURNZD	1.7246	1.7185	179	3.44%	0.01	0.00	1	0.00
EURUSD	0.5	101	0.32%						74%	26%	BUY	SELL	CLOSE	EURUSD	1.1807	1.1779	284	2.21%	0.00	0.00	0	0.00
GBPUSD	0	0	0%						0%	0%	BUY	SELL	CLOSE	GBPUSD	0	0	0	0%	0.00	0.00	0	0.00
GBPGBP	0	0	0%						0%	0%	BUY	SELL	CLOSE	GBPGBP	0	0	0	0%	0.00	0.00	0	0.00
GBPCHF	2.2	108	0.08%						40%	46%	BUY	SELL	CLOSE	GBPCHF	0.7790	0.7770	20	-0.14%	0.00	0.00	0	0.00
GBPJPY	1.3	113	-0.16%						19%	79%	BUY	SELL	CLOSE	GBPJPY	0.7790	0.7770	20	-0.82%	0.00	0.00	0	0.00
GBPNZD	2.7	173	0.35%						60%	8%	BUY	SELL	CLOSE	GBPNZD	0.9303	0.9221	131	8.94%	0.01	0.00	1	0.00
GBPUSD	0.9	104	0.26%						71%	27%	BUY	SELL	CLOSE	GBPUSD	1.1807	1.1779	284	2.21%	0.00	0.00	0	0.00
NZDCAD	1.5	54	0.11%						10%	90%	BUY	SELL	CLOSE	NZDCAD	0.7517	0.7516	30	0.00%	0.00	0.00	0	0.00
NZDCHF	1.7	51	-0.21%						9%	86%	BUY	SELL	CLOSE	NZDCHF	0.7790	0.7770	20	-0.82%	0.00	0.00	0	0.00
NZDJPY	1.4	51	-0.47%						7%	80%	BUY	SELL	CLOSE	NZDJPY	0.7790	0.7770	20	-0.82%	0.00	0.00	0	0.00
NZDUSD	0.9	63	-0.07%						89%	1%	BUY	SELL	CLOSE	NZDUSD	0.7517	0.7516	30	0.00%	0.00	0.00	0	0.00
USDCAD	0.9	60	-0.19%						40%	59%	BUY	SELL	CLOSE	USDCAD	0.7517	0.7516	30	0.00%	0.00	0.00	0	0.00
USDCHF	1.1	44	-0.19%						44%	54%	BUY	SELL	CLOSE	USDCHF	0.7790	0.7770	20	-0.82%	0.00	0.00	0	0.00
USDJPY	0.4	11	-0.42%						22%	76%	BUY	SELL	CLOSE	USDJPY	0.7790	0.7770	20	-0.82%	0.00	0.00	0	0.00

RULE ONE

The following must be considered to satisfy rule 1.

1. Be at your computer 15 minutes after London Open.
2. Look for Master and Slave.

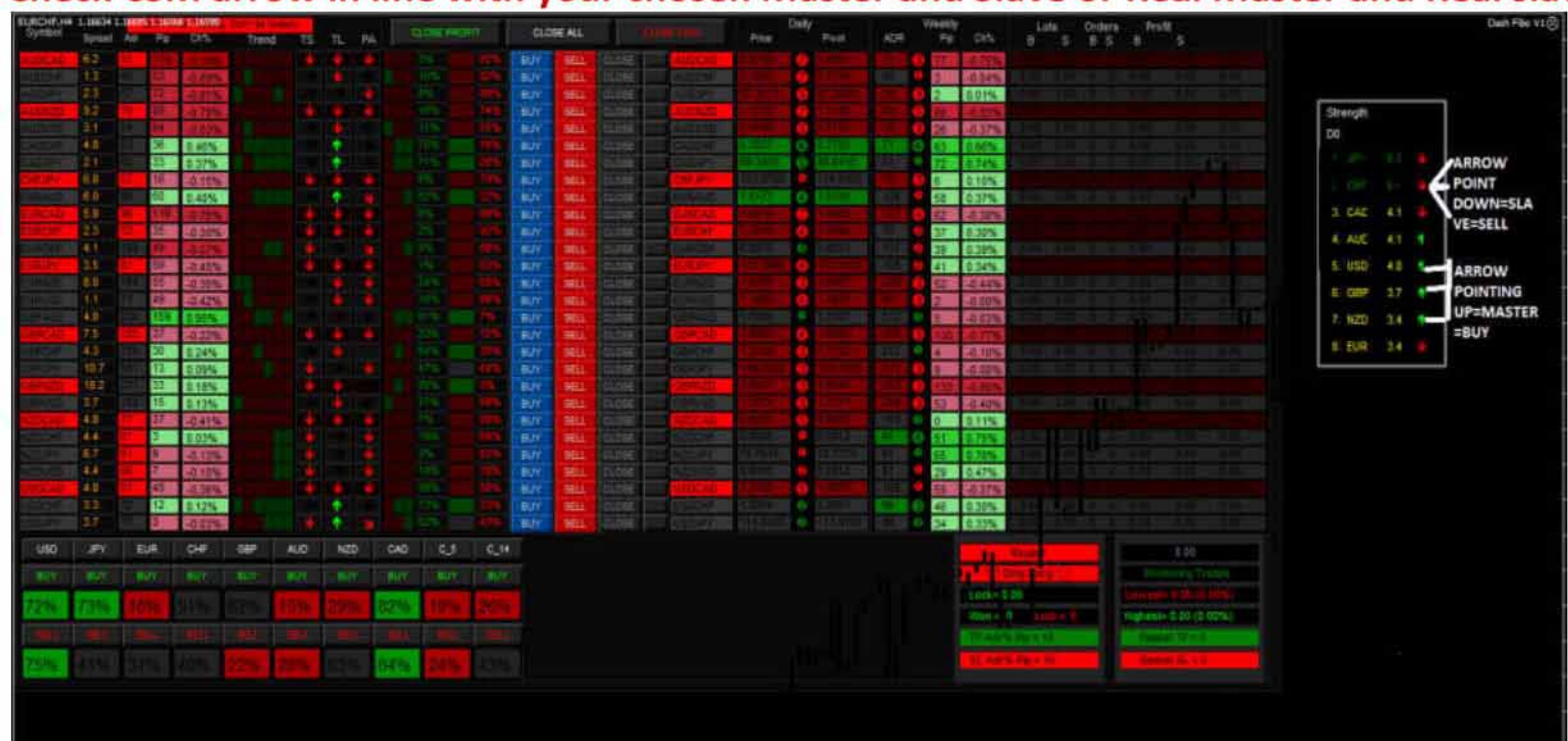
Symbol	Spread	Adr	Pip	Ch%	Trend	TS	TL	PA	CLOSE PROFIT	CLOSE ALL	CLOSE LOSS	Price	Daily	Pivot	ADR	Weekly	Pip	Ch%	Lots	Orders	Profit	S
AUDCAD	1.3	30	-0.09%						7%	89%	BUY	SELL	CLOSE	AUDCAD	0.7517	0.7516	30	0.00%	0.00	0.00	0.00	0.00
AUDCHF	1.1	40	-0.04%						15%	80%	BUY	SELL	CLOSE	AUDCHF	0.7517	0.7516	30	0.00%	0.00	0.00	0.00	0.00
AUDJPY	0.8	12	0.13%						53%	44%	BUY	SELL	CLOSE	AUDJPY	0.7517	0.7516	30	0.00%	0.00	0.00	0.00	0.00
AUDNZD	0.8	14	0.08%						51%	47%	BUY	SELL	CLOSE	AUDNZD	1.1166	1.1165	105	0.08%	0.00	0.00	0	0.00
AUDUSD	0.8	19	-0.25%						4%	94%	BUY	SELL	CLOSE	AUDUSD	0.7517	0.7516	30	0.00%	0.00	0.00	0.00	0.00
CADCHF	1.5	54	0.06%						97%	1%	BUY	SELL	CLOSE	CADCHF	0.7790	0.7770	20	0.22%	0.00	0.00	0	0.00
CADJPY	1.3	64	0.22%						92%	4%	BUY	SELL	CLOSE	CADJPY	0.7790	0.7770	20	0.36%	0.04	0.00	2	0.00
CHFJPY	1.4	10	0.19%						95%	9%	BUY	SELL	CLOSE	CHFJPY	0.7790	0.7770	20	0.20%	0.00	0.00	0	0.00
EURAUD	0.7	107	0.16%						94%	3%	BUY	SELL	CLOSE	EURAUD	1.5112	1.5144	142	-0.37%	0.00	0.00	0	0.00
EURCAD	1.7	10	0.07%						91%	42%	BUY	SELL	CLOSE	EURCAD	1.5013	1.5024	136	-0.40%	0.00	0.00	0	0.00
EURCHF	1.8	50	0.08%						77%	6%	BUY	SELL	CLOSE	EURCHF	1.5112	1.5172	74	-0.21%	0.00	0.00	0	0.00
EURGBP	1.1	40	0.05%						66%	24%	BUY	SELL	CLOSE	EURGBP	0.7517	0.7516	30	-0.66%	0.00	0.00	0	0.00
EURJPY	0.7	107	0.27%						90%	9%	BUY	SELL	CLOSE	EURJPY	0.7517	0.7516	30	-0.03%	0.00	0.00	0	0.00
EURNZD	2.2	13	0.21%						83%	11%	BUY	SELL	CLOSE	EURNZD	1.6744	1.6759	143	-0.34%	0.00	0.00	0	0.00
EURUSD	0.5	101	-0.11%						7%	94%	BUY	SELL	CLOSE	EURUSD	1.1807	1.1779	284	-0.10%	0.00	0.00	0	0.00
GBPUSD	1.8	105	0.12%						71%	18%	BUY	SELL	CLOSE	GBPUSD	1.1807	1.1779	284	0.32%	0.02	0.00	1	0.00
GBPGBP	2.3	115	0.01%						34%	69%	BUY	SELL	CLOSE	GBPGBP	1.1807	1.1779	284	0.29%	0.00	0.00	0	0.00
GBPCHF	1.7	104	0.05%						13%	86%	BUY	SELL	CLOSE	GBPCHF	0.7790	0.7770	20	0.50%	0.00	0.00	0	0.00
GBPJPY	1.5	108	0.27%						81%	18%	BUY	SELL	CLOSE	GBPJPY	0.7790	0.7770	20	0.68%	0.00	0.00	0	0.00
GBPNZD	3.7	159	0.17%						72%	23%	BUY	SELL	CLOSE	GBPNZD	1.6552	1.6552	202	0.38%	0.00	0.00	0	0.00
GBPNZD	0.9	105	0.15%						16%	82%	BUY	SELL	CLOSE	GBPNZD	1.6552	1.6552	202	0.59%	0.00	0.00	0	0.00
NZDCAD	1.9	59	-0.13%						14%	81%	BUY	SELL	CLOSE	NZDCAD	0.7517	0.7516	30	-0.06%	0.00	0.00	0	0.00
NZDCHF	1.6	50	-0.07%						22%	70%	BUY	SELL	CLOSE	NZDCHF	0.7790	0.7770	20	0.17%	0.00	0.00	0	0.00
NZDJPY	1.4	55	0.11%						57%	36%	BUY	SELL	CLOSE	NZDJPY	0.7790	0.7770	20	0.35%	0.00	0.00	0	0.00
NZDUSD	0.9	19	-0.29%						8%	88%	BUY	SELL	CLOSE	NZDUSD	0.7517	0.7516	30	0.27%	0.00	0.00	0	0.00
USDCAD	1.1	45	0.16%						95%	0%	BUY	SELL	CLOSE	USDCAD	1.2744	1.2743	143	-0.30%	0.00	0.00	0	0.00
USDCHF	1.1	45	0.2%						96%	1%	BUY	SELL	CLOSE	USDCHF	0.7790	0.7770	20	-0.10%	0.00	0.00	0	0.00
USDJPY	0.4	11	0.40%						97%	3%	BUY	SELL	CLOSE	USDJPY	0.7790	0.7770	20	0.08%	0.00	0.00	0	0.00

Pairs to trade : **BUY (USDJPY, AND CADJPY)** AND **SELL (AUDUSD, NZDCAD AND AUDCAD).**

3. Or look for Real Master and Real Slave.



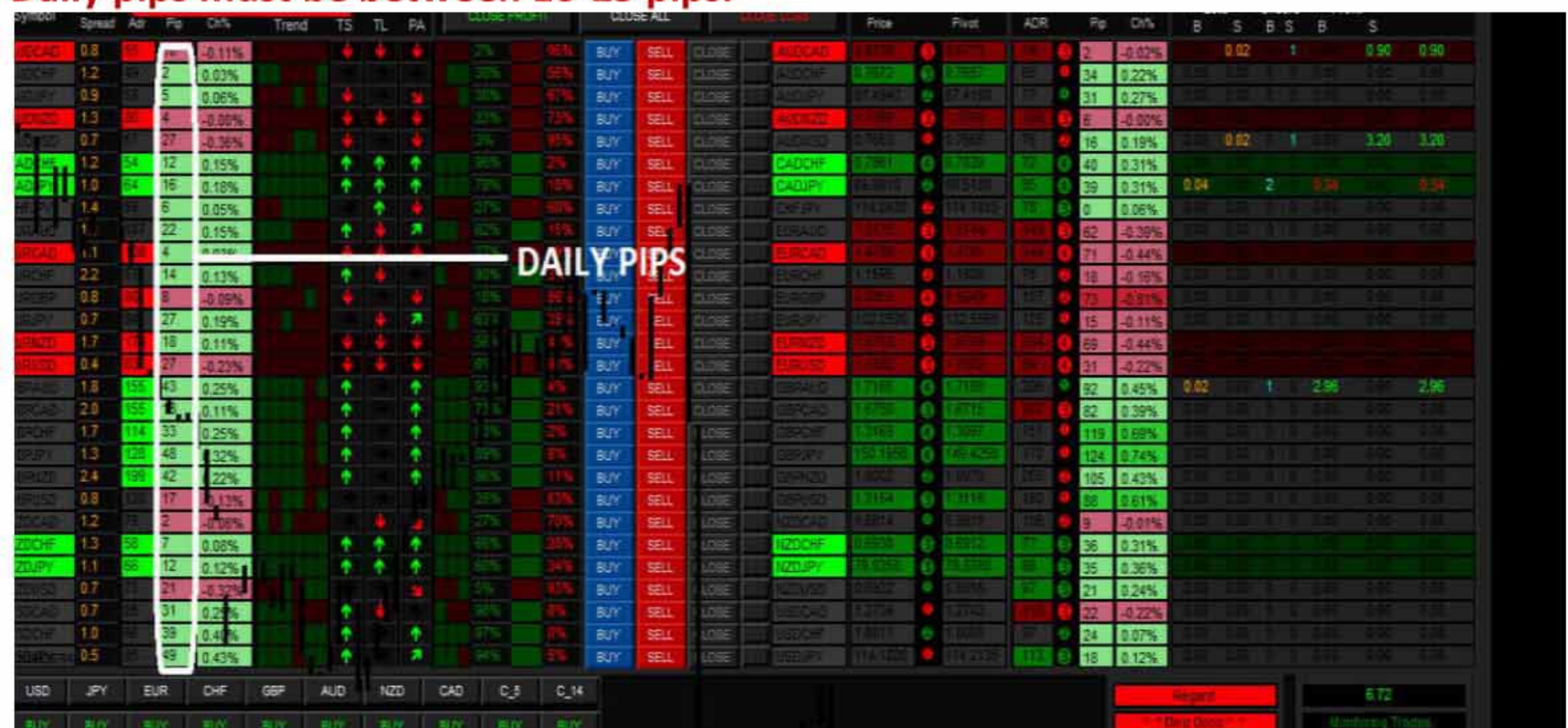
4. Check CSM arrow in line with your chosen Master and Slave or Real Master and Real slave.



RULE TWO

The following must be considered to satisfy rule 2.

1. Daily pips must be between 10-25 pips.



2a. Percentage change must be between 0.1 to 0.25 for buy.

The screenshot displays a trading platform interface with a list of currency pairs and their prices. A large white arrow points to the 'BUY' button for the EUR/USD pair. The interface includes columns for currency pairs, prices, and various indicators. The 'BUY' button is highlighted in red, and the 'SELL' button is highlighted in green. The 'BUY' button is located in the middle of the interface, and the 'SELL' button is located to its right. The 'BUY' button is labeled 'BUY' in white text, and the 'SELL' button is labeled 'SELL' in white text. The 'BUY' button is located in the middle of the interface, and the 'SELL' button is located to its right. The 'BUY' button is labeled 'BUY' in white text, and the 'SELL' button is labeled 'SELL' in white text. The 'BUY' button is located in the middle of the interface, and the 'SELL' button is located to its right. The 'BUY' button is labeled 'BUY' in white text, and the 'SELL' button is labeled 'SELL' in white text.

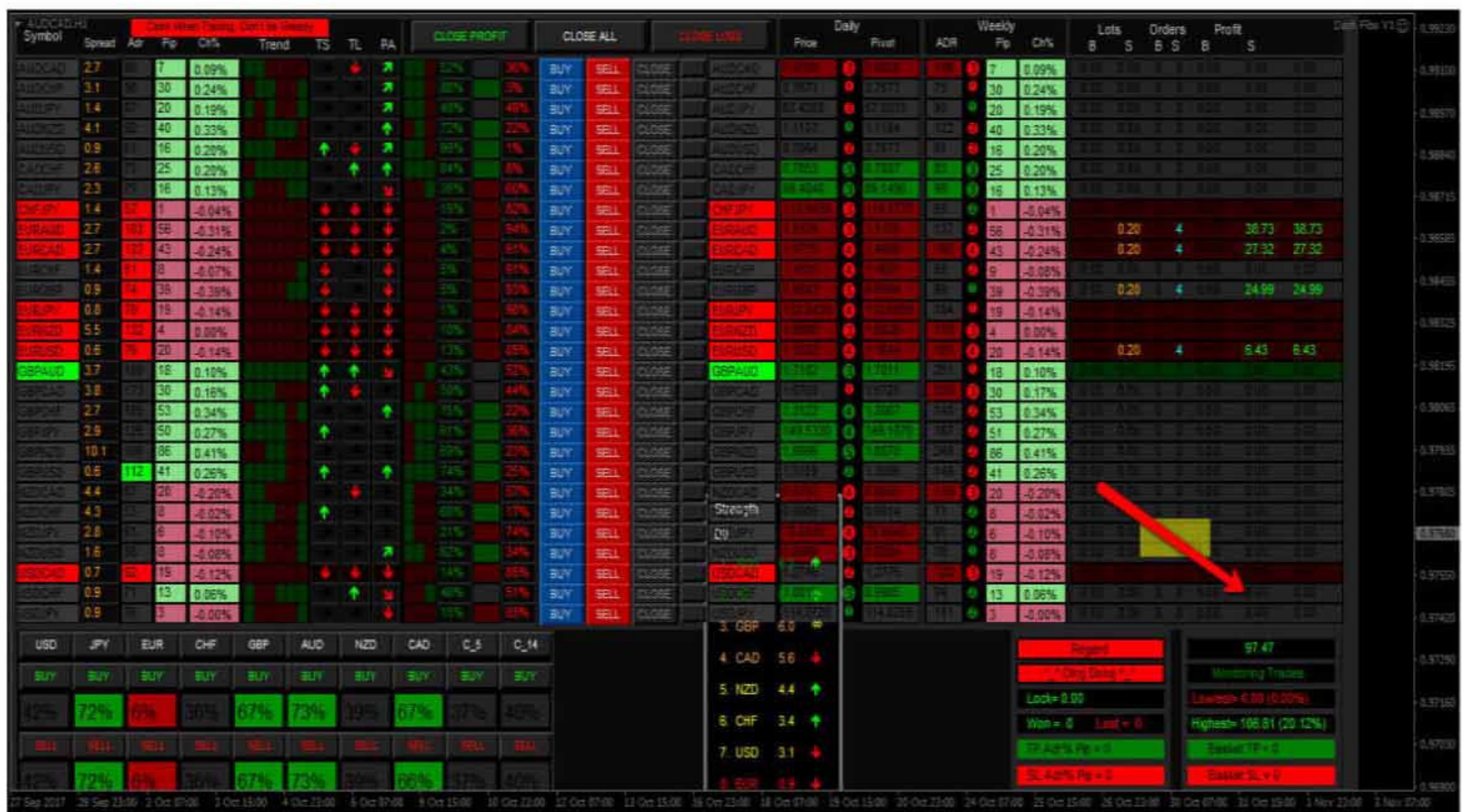
2b. Percentage change must be between -0.1 to -0.25 for sell.

The screenshot displays a trading platform interface with a list of currency pairs. A large white arrow points to the 'SELL' button for the EUR/USD pair. The interface includes columns for currency pairs, price, volume, and various indicators. The 'SELL' button is highlighted in red, and the 'BUY' button is highlighted in blue. The 'EUR/USD' pair is selected, and its price is shown as 1.0710. The volume is 1.0710. The 'SELL' button is located in the 'Action' column for the EUR/USD row.

RULE THREE: STOP LOSS

The following must be considered to satisfy rule 3.

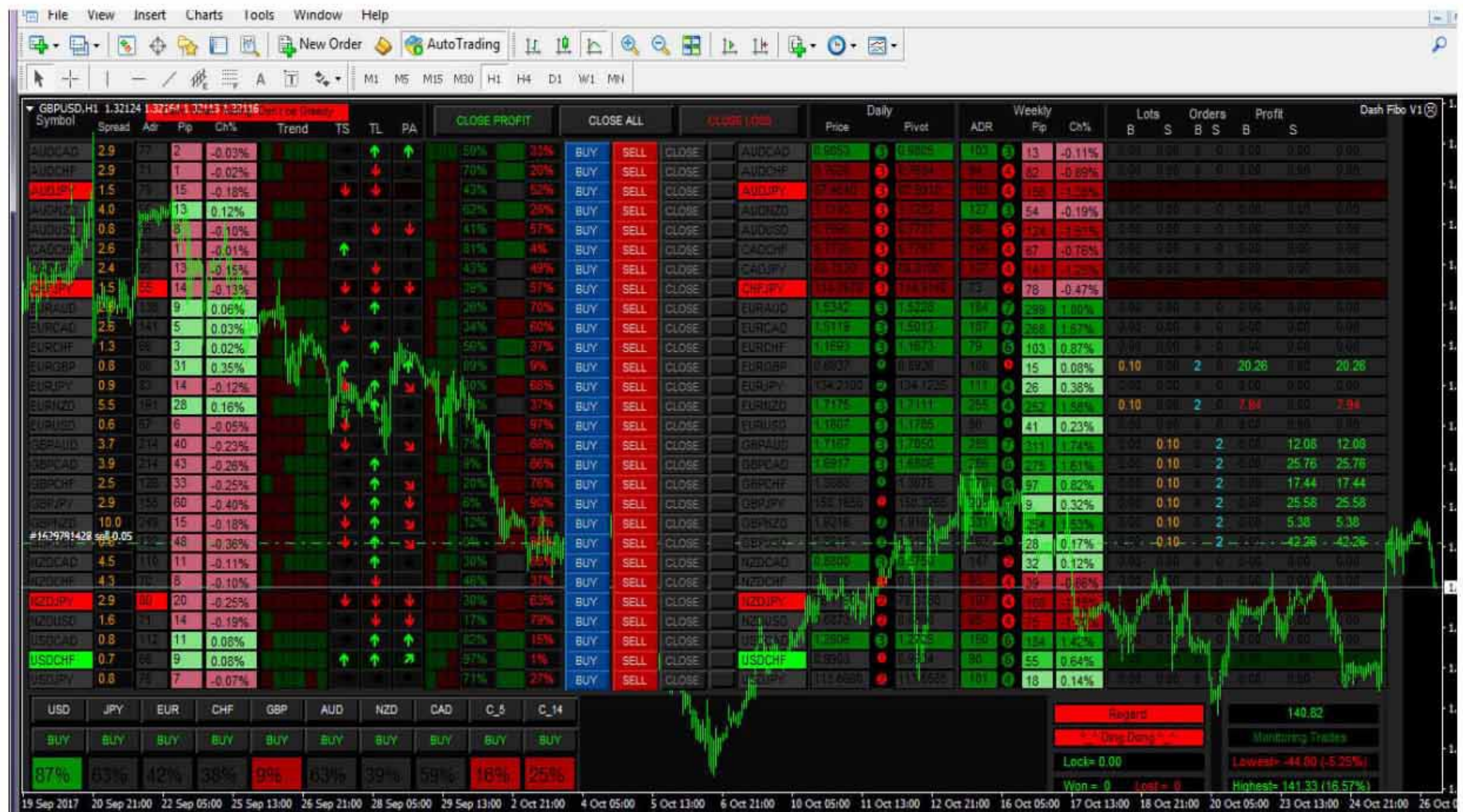
- Exit you loss and enter the opposite if rule 1 and 2 is met.



RULE 4: Example 2

All GBP pairs satisfy the RULES.

PAIRS TO TRADE: BUY (EURGBP) AND SELL (GBPAUD, GBPCAD, GBPCHF, GBPJPY, GBPNZD AND GBPUSD).



TAKE PROFIT FOR RULE 4: This is at trader's discretion. Take your profit when you are satisfied.

This manual is a great tool if used correctly. Rule number 4 is the best of all if well understood. You must practice it over and over again on a demo before trading it on a life account