

## High Low Breakout Technique

This technique can be used for any market that has a decent daily range. If you look at any chart, what do you see?

You should see a succession of bars that are doing one of three things.

1. Going up
2. Going down
3. Going sideways

### [Technical Analysis Tools](#)

100+ indicators and custom options Start free demo trial today  
www.cmsfx.com/

### [Trader Makes \\$18 Billion](#)

California trader makes \$18 Billion in a single year! Find out How  
www.VirtualInvestingClub.com

### [Forex Trading Signals](#)

Check out these valuable Forex Trading Signals resources  
HugeDiscounts.cc

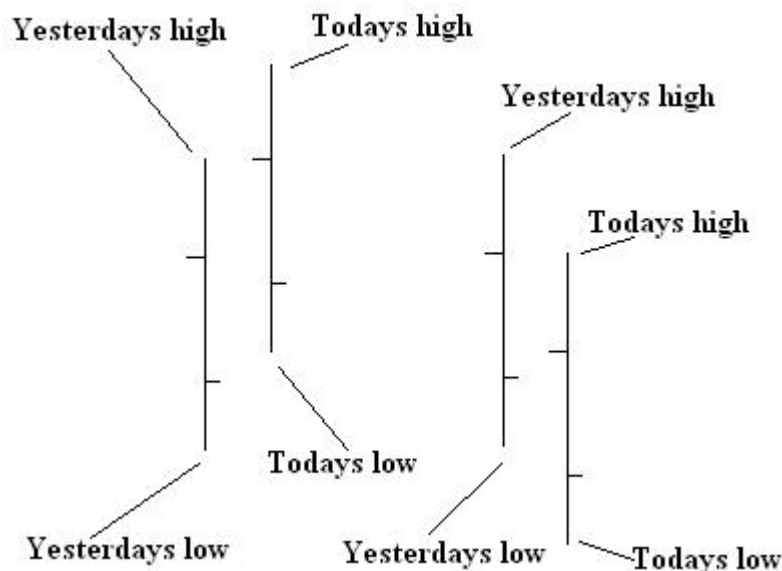


Ads by Google

Unless today's bar turns out to be an inside day or very rarely the high and low of today are exactly the same as the high and low as yesterday, then we will have a new high or low.

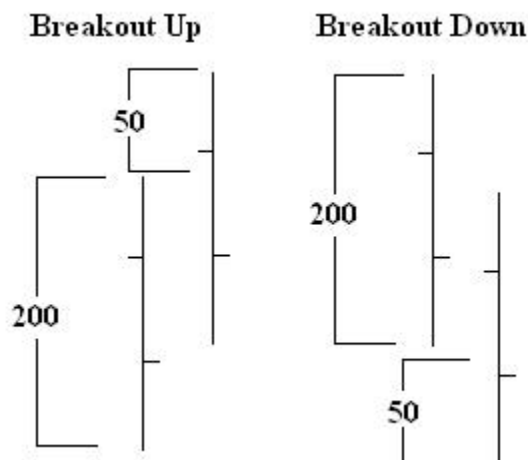
Think about it. Today's bar, in all probability will make a higher high than yesterday's bar or a lower low than yesterday's bar.

This information is very powerful. Look at the chart below:



Now, the question is - how much of a higher high or lower low will today achieve than yesterday?

In our next example, company XYZ had a range of 200 points (high minus the low) yesterday. Today the high might be 50 points higher than yesterday's high or 50 points lower than yesterday's low. If we can find the average daily distance between the high of yesterday's high to the high of today's bar and the average daily distance between the low of yesterday's bar and the low of today's bar, then we might have a trading opportunity.



Make yourself a little excel sheet or grab a pen and paper and start tracking the high and lows of each day. Then deduct the high of today from yesterday's high and the low of today from yesterday's low.

After you have a few day's worth of data you can get an average. On the excel sheet, below the first five columns are the date, open, high, low and close. "DR" is daily range, "TH-YH" is today's high minus yesterday's high and "YL-TL" is yesterday's low minus today's low. In the "TH-YH" column, I only record an entry if today's high is greater than yesterday's high and in the "YL-TL" I only record an entry if today's low is lower than yesterday's low. All pretty simple stuff.

Date	O	H	L	C	DR	TH-YH	YL-TL
08/10/2004	1.8410	1.8418	1.8252	1.8267	0.0166		
08/11/2004	1.8267	1.8320	1.8242	1.8295	0.0078		0.0010
08/12/2004	1.8295	1.8358	1.8197	1.8220	0.0161	0.0038	0.0045
08/13/2004	1.8220	1.8455	1.8130	1.8426	0.0325	0.0097	0.0067
08/16/2004	1.8428	1.8463	1.8371	1.8399	0.0092	0.0008	
08/17/2004	1.8399	1.8432	1.8262	1.8280	0.0170		0.0109
08/18/2004	1.8280	1.8298	1.8202	1.8237	0.0096		0.0060
08/19/2004	1.8237	1.8342	1.8195	1.8323	0.0147	0.0044	0.0007
08/20/2004	1.8323	1.8335	1.8168	1.8174	0.0167		0.0027
08/23/2004	1.8203	1.8208	1.8064	1.8081	0.0144		0.0104
08/24/2004	1.8081	1.8090	1.7880	1.7920	0.0210		0.0184
08/25/2004	1.7920	1.8012	1.7893	1.7970	0.0119		
08/26/2004	1.7970	1.7990	1.7912	1.7963	0.0078		
08/27/2004	1.7963	1.8035	1.7885	1.7895	0.0150	0.0045	0.0027
08/30/2004	1.7906	1.7973	1.7851	1.7956	0.0122		0.0034
08/31/2004	1.7956	1.8065	1.7900	1.8019	0.0165	0.0092	
09/01/2004	1.8019	1.8036	1.7890	1.7928	0.0146		0.0010
09/02/2004	1.7928	1.7972	1.7864	1.7904	0.0108		0.0026
09/03/2004	1.7904	1.7920	1.7734	1.7745	0.0186		0.0130
09/06/2004	1.7767	1.7818	1.7742	1.7803	0.0076		
					<b>Average</b>	<b>0.0054</b>	<b>0.0060</b>

OK, as you can see, the example of the GBP/USD (Pound/Dollar). The average breakout up was 54 pips and the average breakout down was 60 pips. The next thing to do is apply this knowledge to our trading.

On the 2nd September the high was 1.7972 and the low was 1.7864. We are looking for a breakout of either of these points. It doesn't matter which way. So on the 3rd September you mark the previous day's high and low and monitor what happens when it reaches these points.



The way I trade this setup is to wait for the market to test

the low or high of the previous day and then pullback. I don't enter on a break of the previous day's high/low, I wait for a pullback of either a test of the high/low or a break of the high/low.

As you can see from the chart, the market came down and tested the low of 1.7864 and then pulled back. The low that was made was just a few pips lower than the previous day's low and formed a little support area. That support area is the breakout point.

#### [Forex Trading Signals](#)

Check out these valuable Forex Trading Signals resources  
HugeDiscounts.cc

#### [Forex signals and alerts](#)

Automated Forex Trading Signals. We average over 1024 pips/month.  
www.Vision4X.com

#### [Currency Trade Online](#)

Real-Time Charts, News & Research. 24/6 Support, \$250 to Start.  
www.Forex.com

#### [Forex Trading](#)

Check Out Forex Trading Solutions From A Trusted Source.  
www.myewoss.com



Ads by Google

You can place an entry order a couple of pips below the support area with a target of the average "YL-TL" as a target, which in this case was 60 pips. The stop is a bit more tricky. If the pullback is not too big you can place your stop just above the pullback area (resistance). If the distance is too great, then just use a Dollar stop.

You can even take this down to a 1 minute chart and scalp the market with a very tight stop. There are loads of ways to trade this setup. You could add some indicators for confirmation. You could use the entry as setup for a position trade. You could even concentrate on inside day's

where the breakout might have a much larger range.

However you decide to trade it, at least take note of the previous day's high and low.

Good Trading

Best Regards  
Mark McRae

### **High Low Breakout Technique**

Information, charts or examples contained in this lesson are for illustration and educational purposes only. It should not be considered as advice or a recommendation to buy or sell any security or financial instrument. We do not and cannot offer investment advice. For further information please read our [disclaimer](#).