

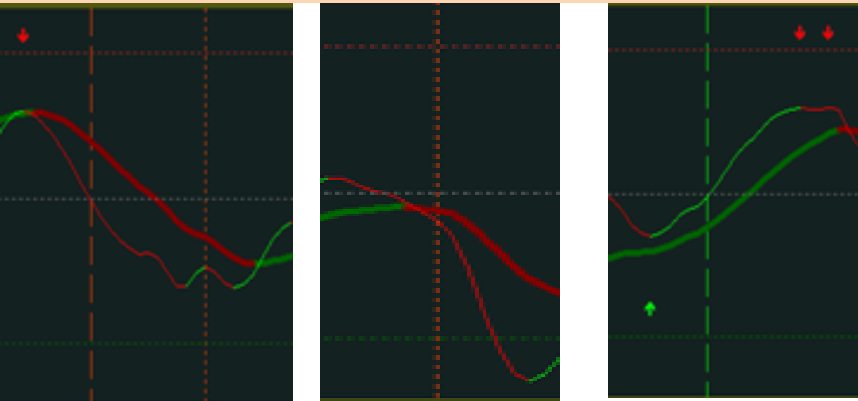
THV TRIX TRADING METHOD

Key points:

RESPECT PIVOT POINTS!!!!

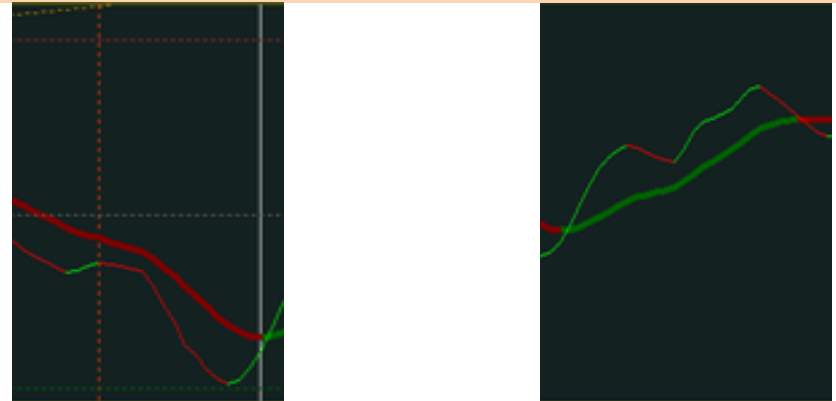
ENTRIES (After divergence arrows)

Fast Trix ZERO crosses
Fast/Slow Trix Crosses



ADD ONS

Fast/Slow Trix failed cross
(Bear/Bull Challenge)



EXITS:

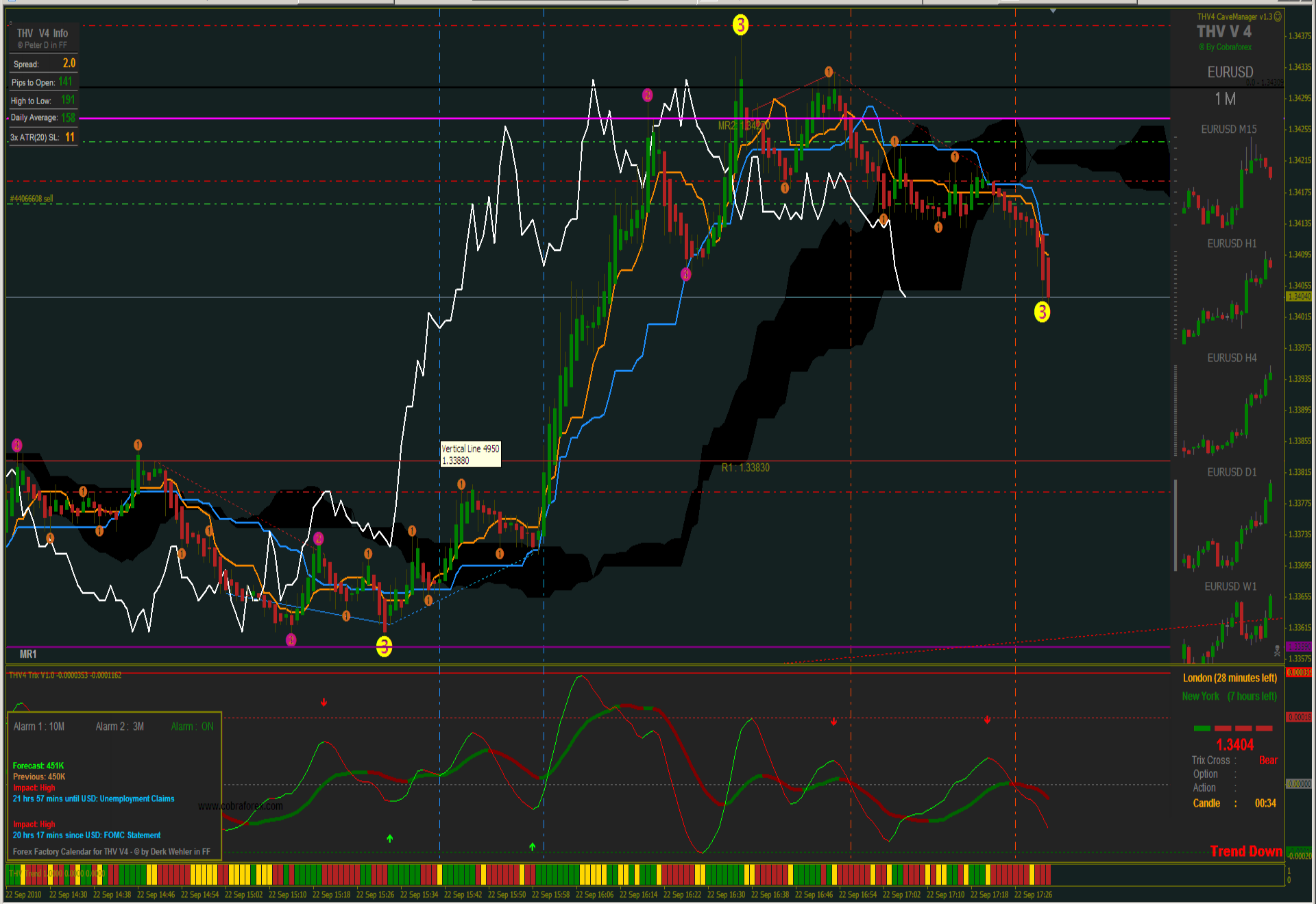
Slow Trix Color Change, or
Trend Lines, or Major Pivot, or Psych Number

Trading Plan

- Only risk 2-3% of account per trade
 - Stop Loss = 300% of ATR(20)
 - T/P = 2 X Stop Loss
 - Trail = .75 X Stop Loss
- For Example – S/L = 20 pips, T/P = 40 pips, Trail = 15 pips

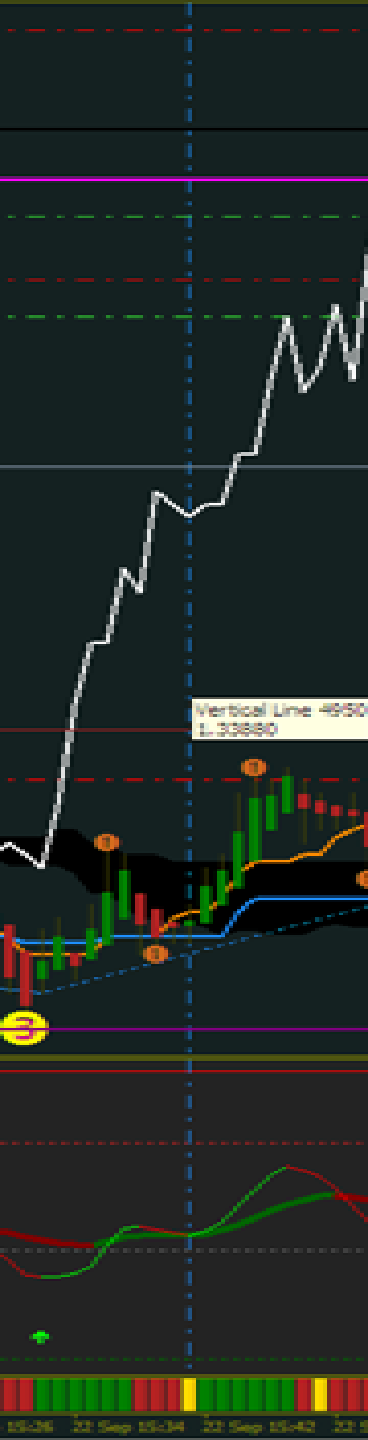
9-22-2010 Trades

- From 0730 – 1300 est
- 4 Trades (4 main)
- 88 pips profit (currently)



Trade 1

- Fast Trix Cross ZERO (Buy 1.3367)
- Exit (Slow TRIX color Change)(Close 1.3376)
- Profit (9 pips)





Trade 2

- Fast Trix Cross ZERO (Buy 1.3382)
- Exit (Slow TRIX color Change)(Close 1.3418)
- Profit (45 pips)



Trade 3

- Fast Trix Cross ZERO (sell 1.3423)
- Exit (Slow TRIX color Change)(STILL OPEN)
- Profit (currently 21 pips)

Trade 4

- Fast Trix Cross ZERO (sell 1.3414)
- Exit (Slow TRIX color Change)(STILL OPEN)
- Profit (currently 13 pips)

