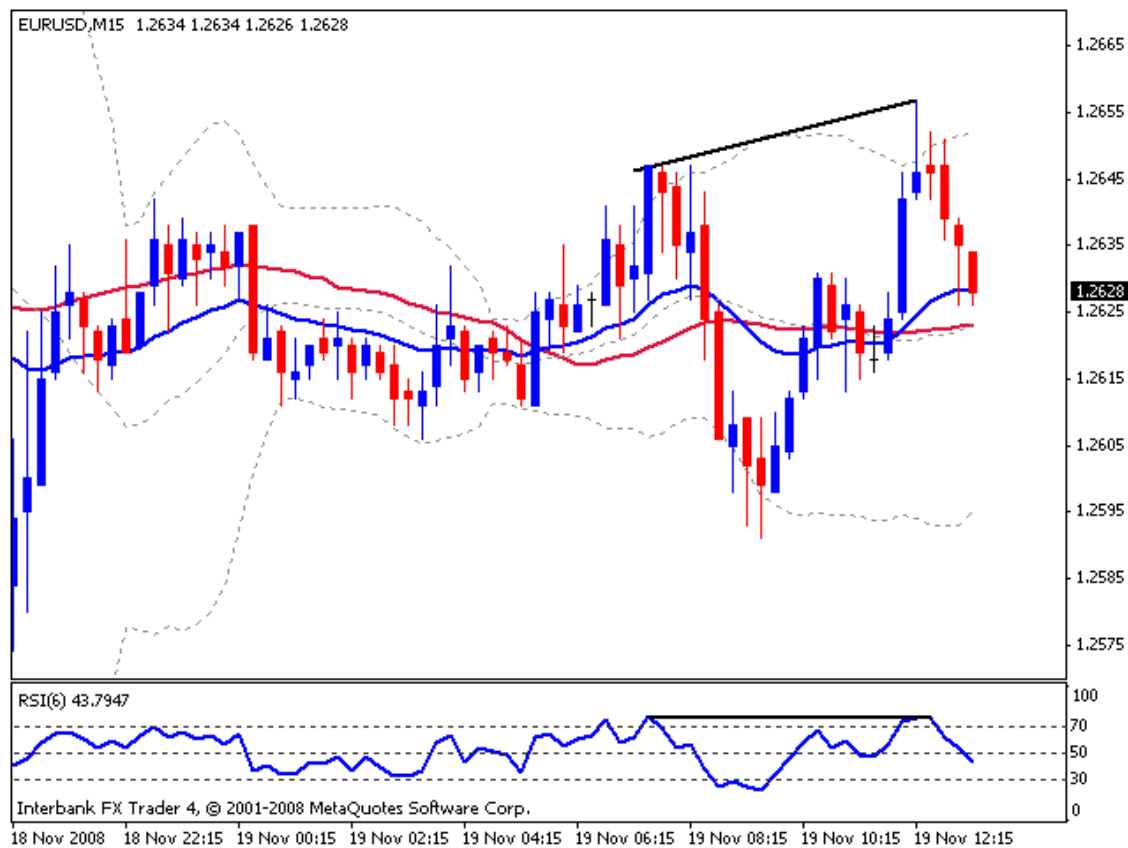
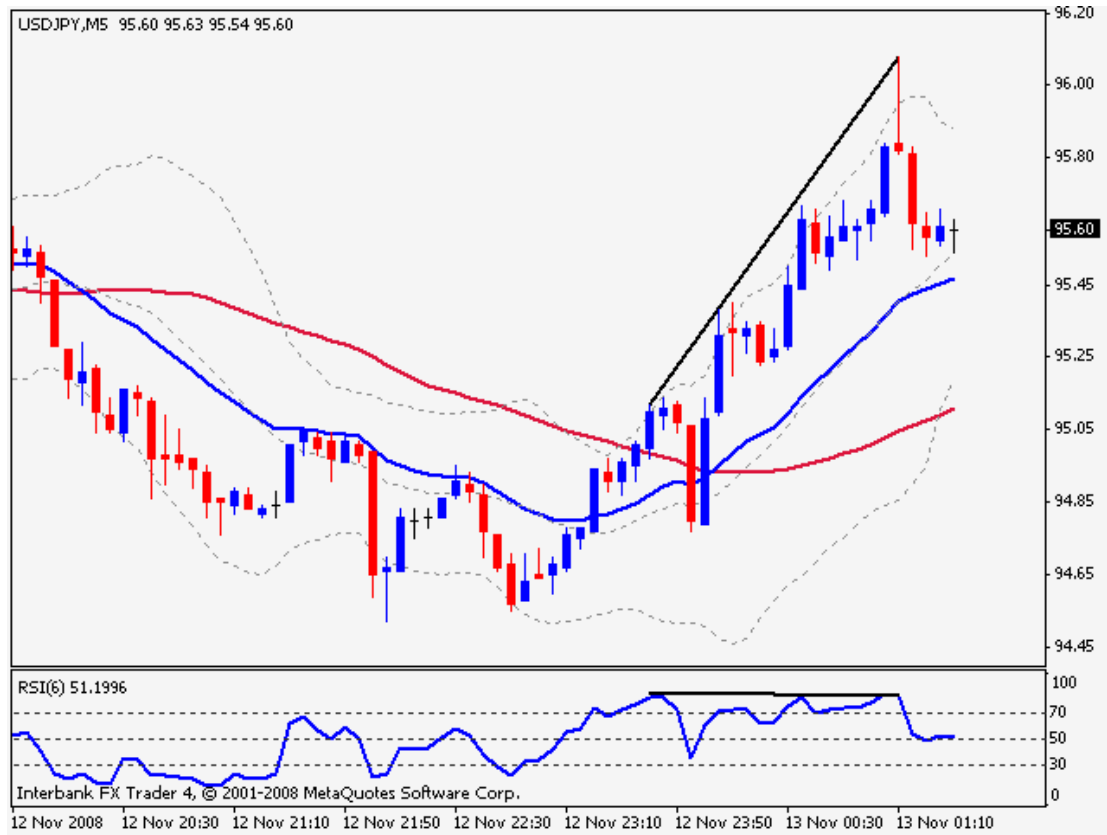
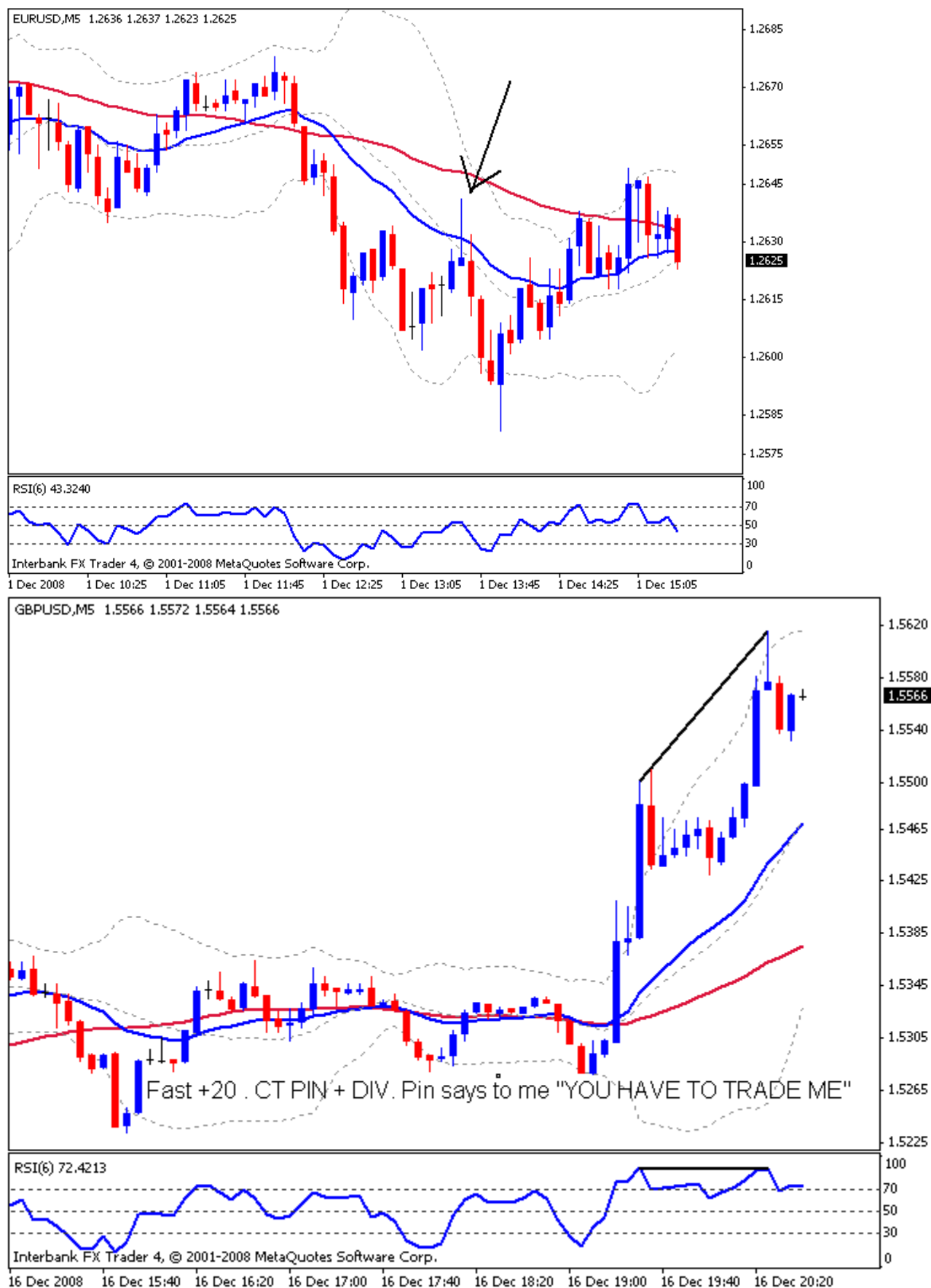
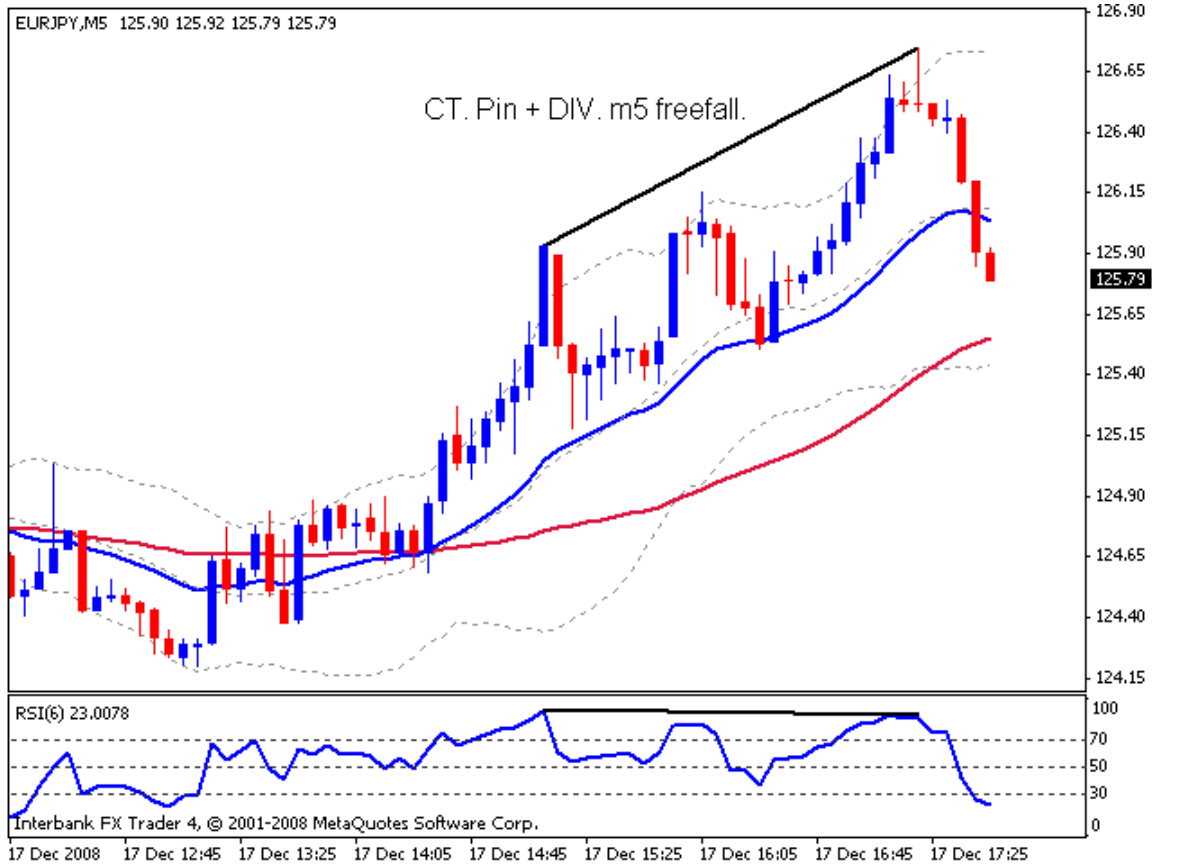


The first 9 pages are his charts posted on J16 Chart Thread. All charts after that are from his own Jankone M5 Thread.





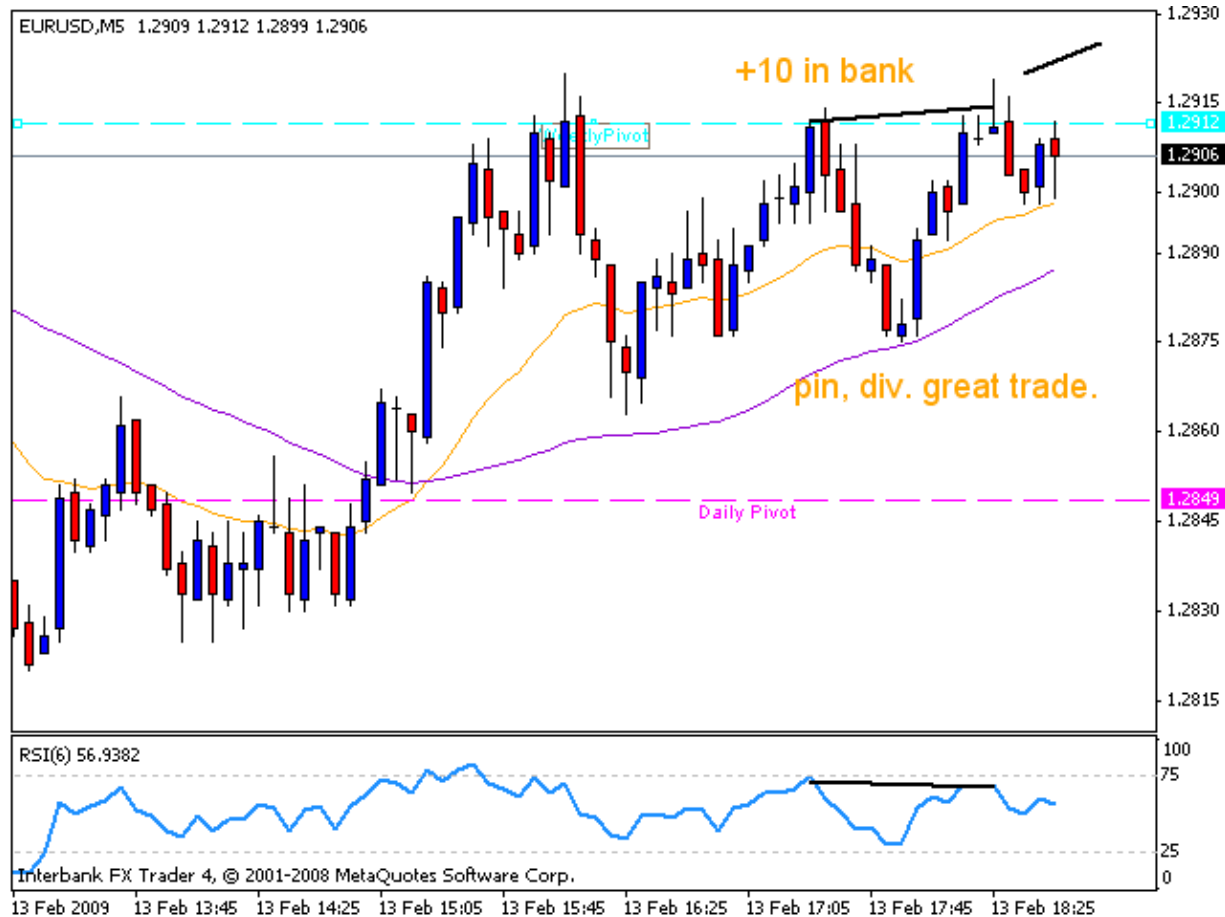




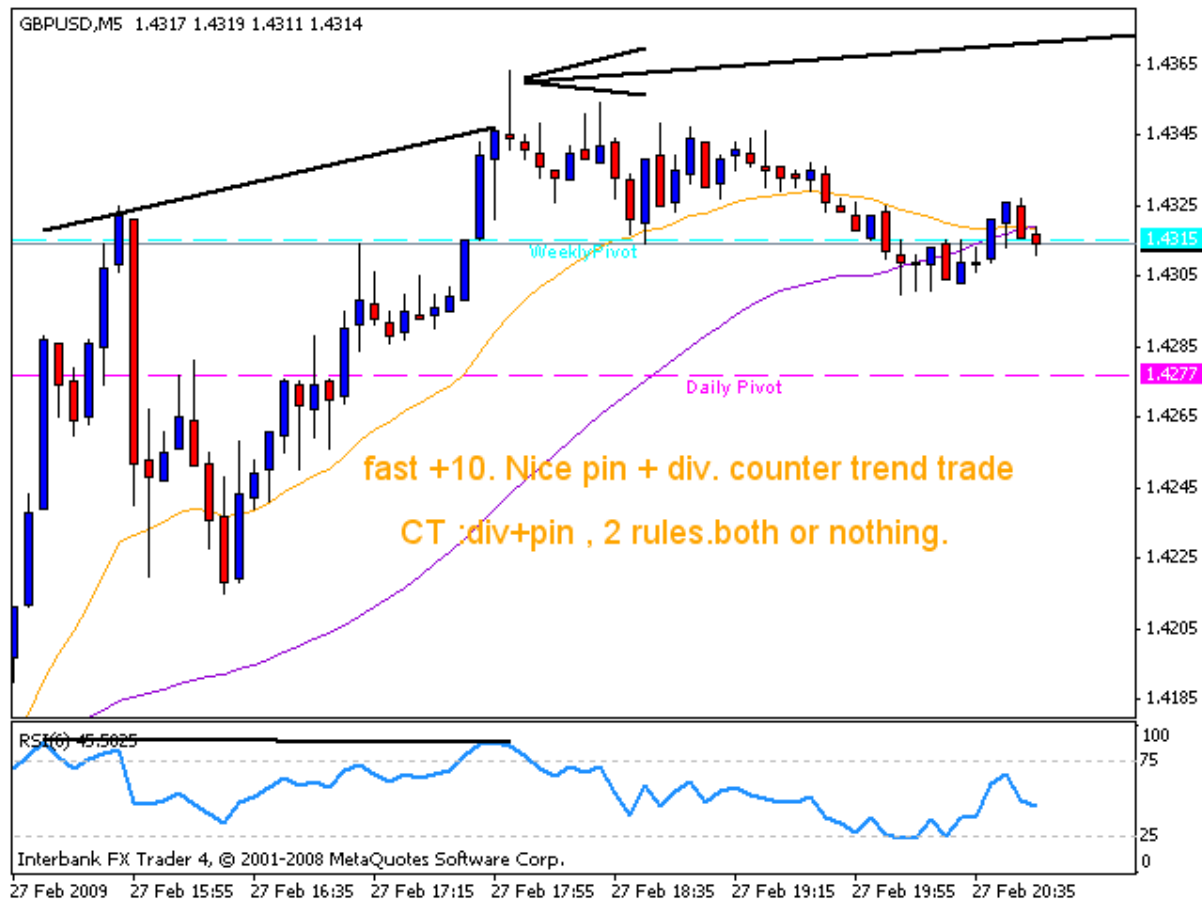




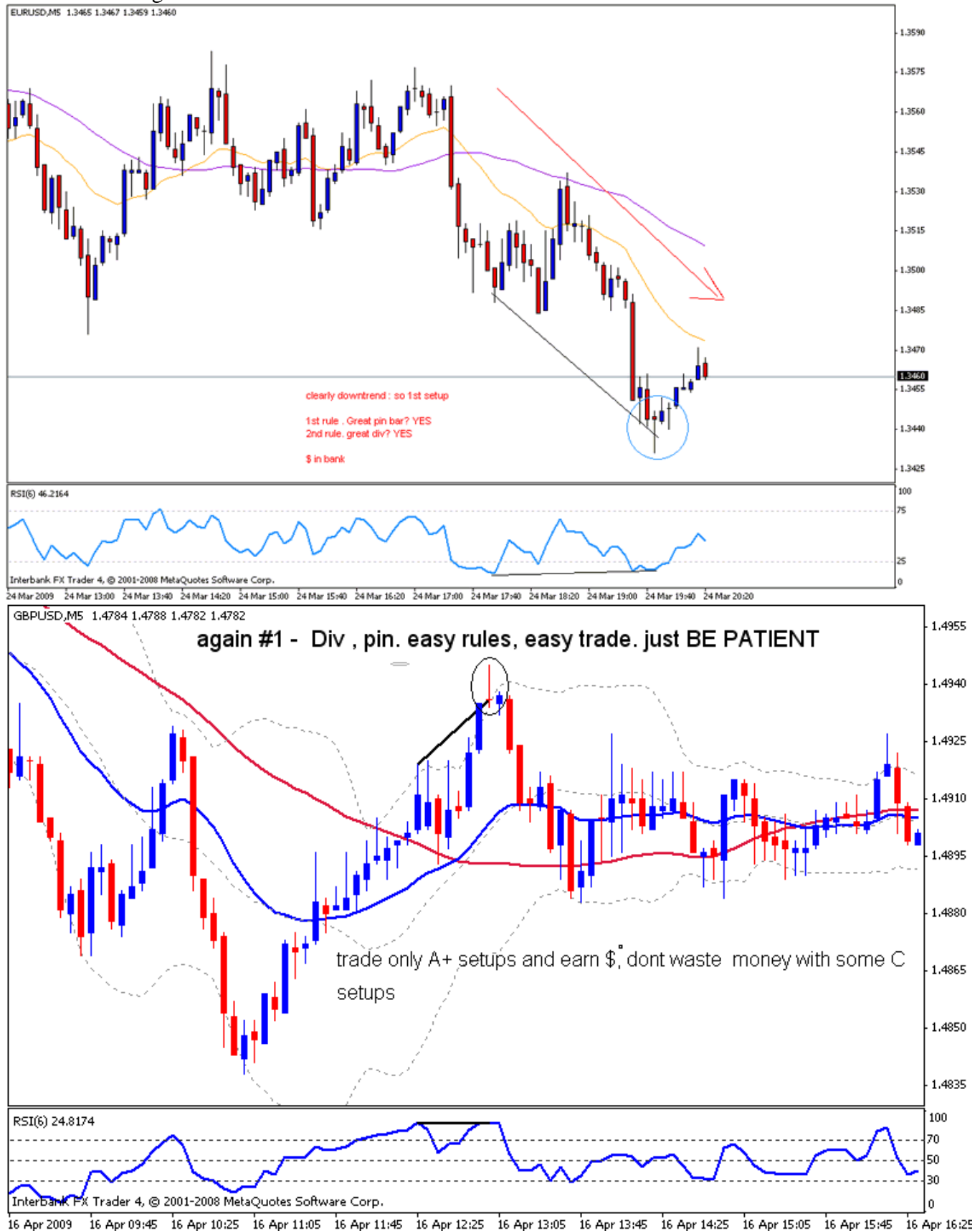


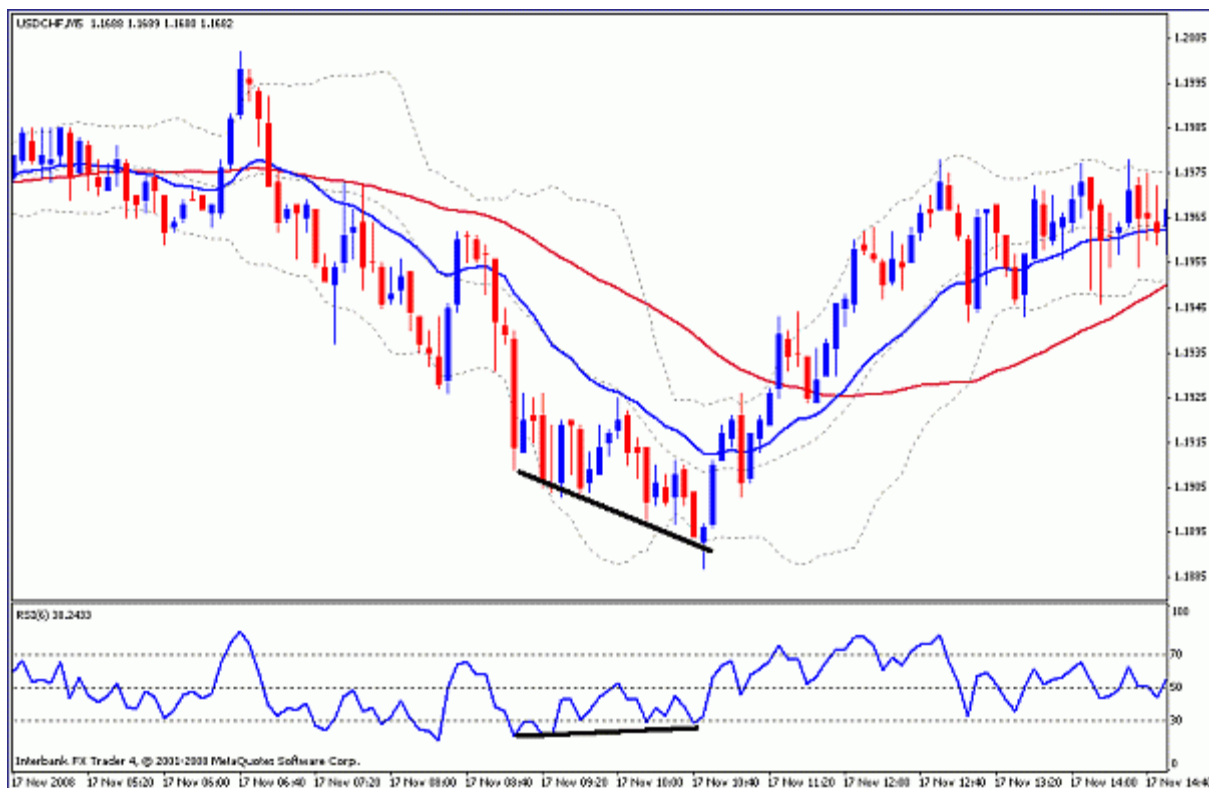




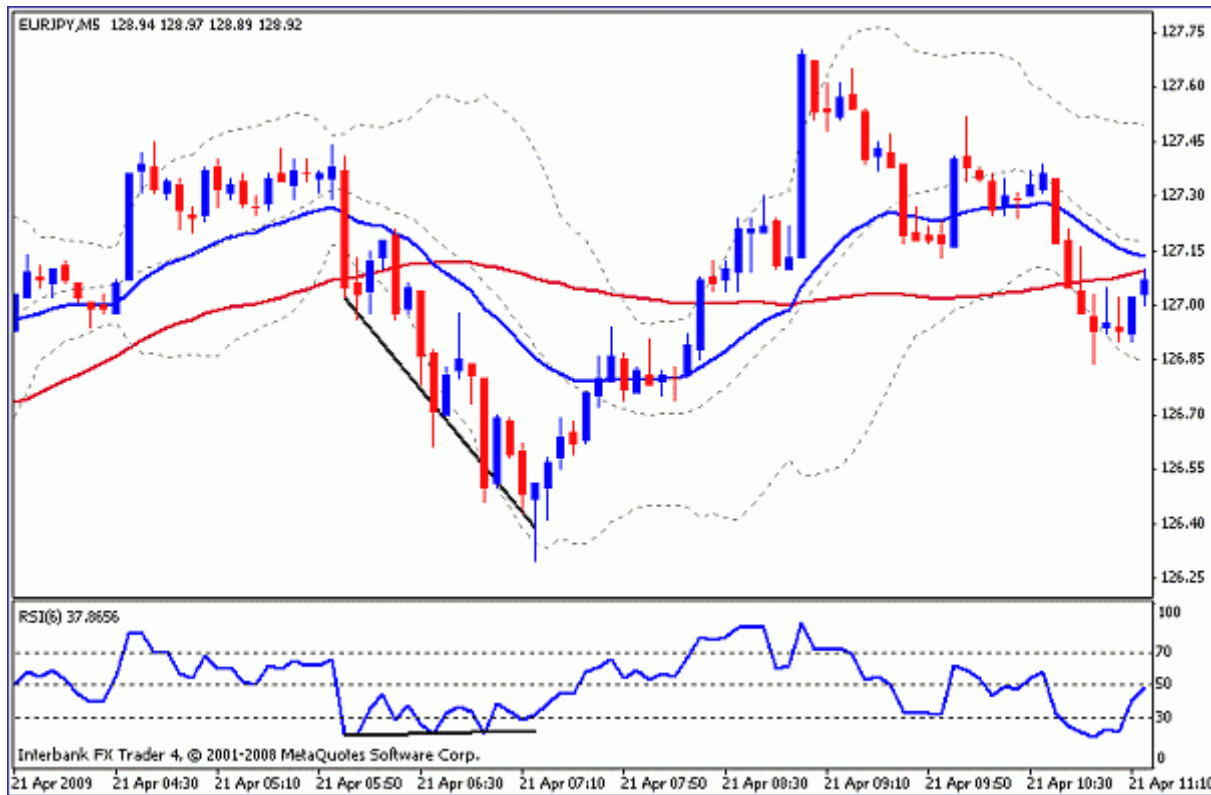


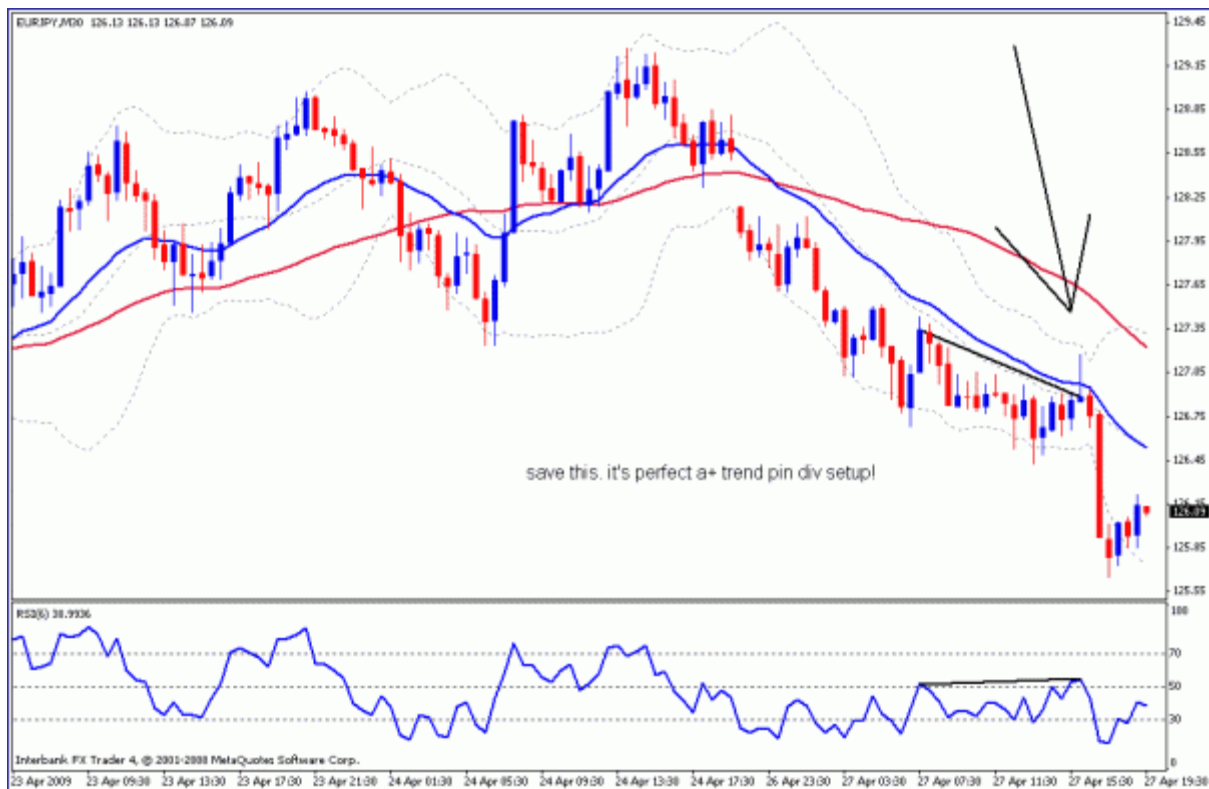
All the following charts are from hi own thread.

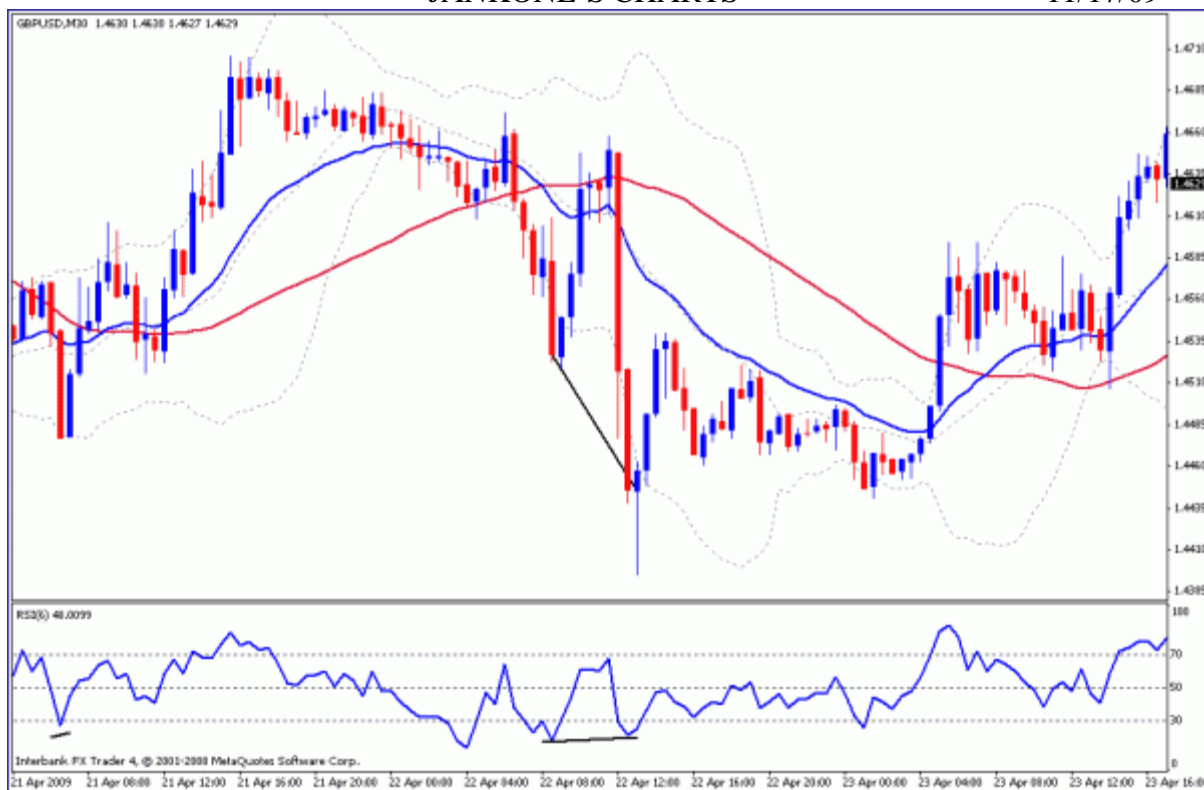








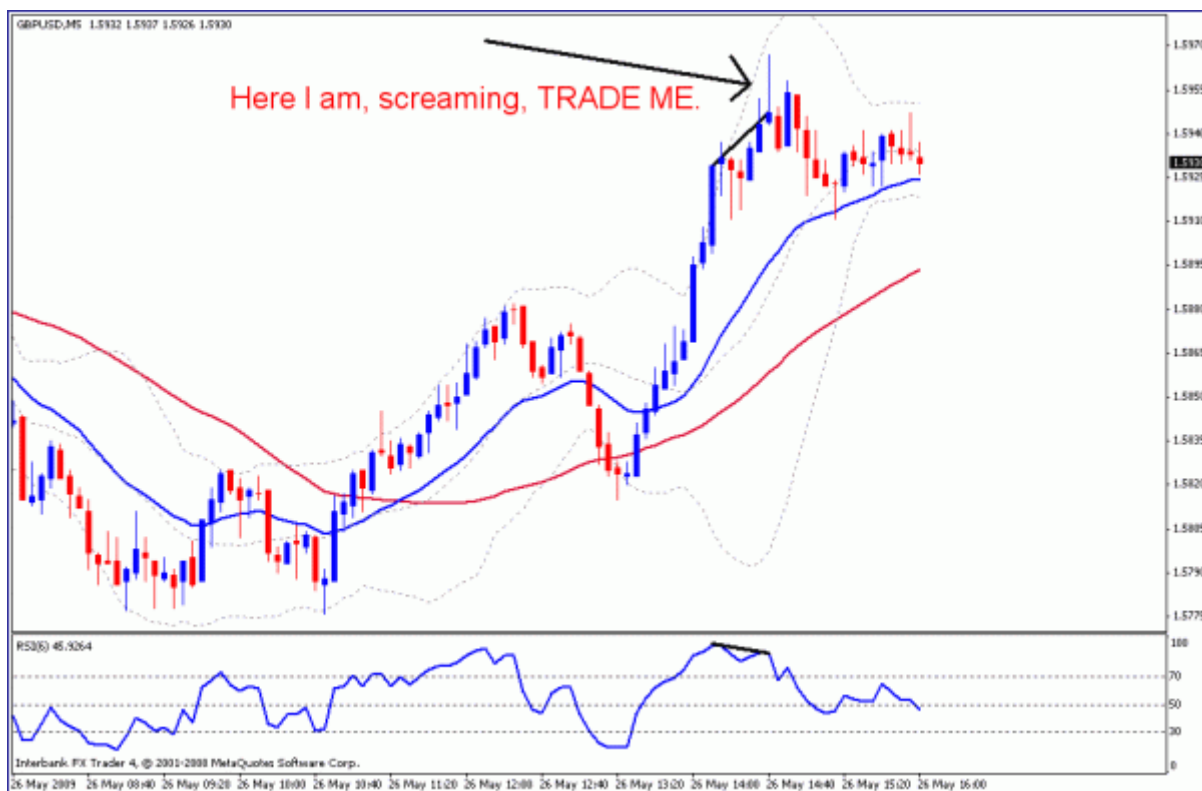
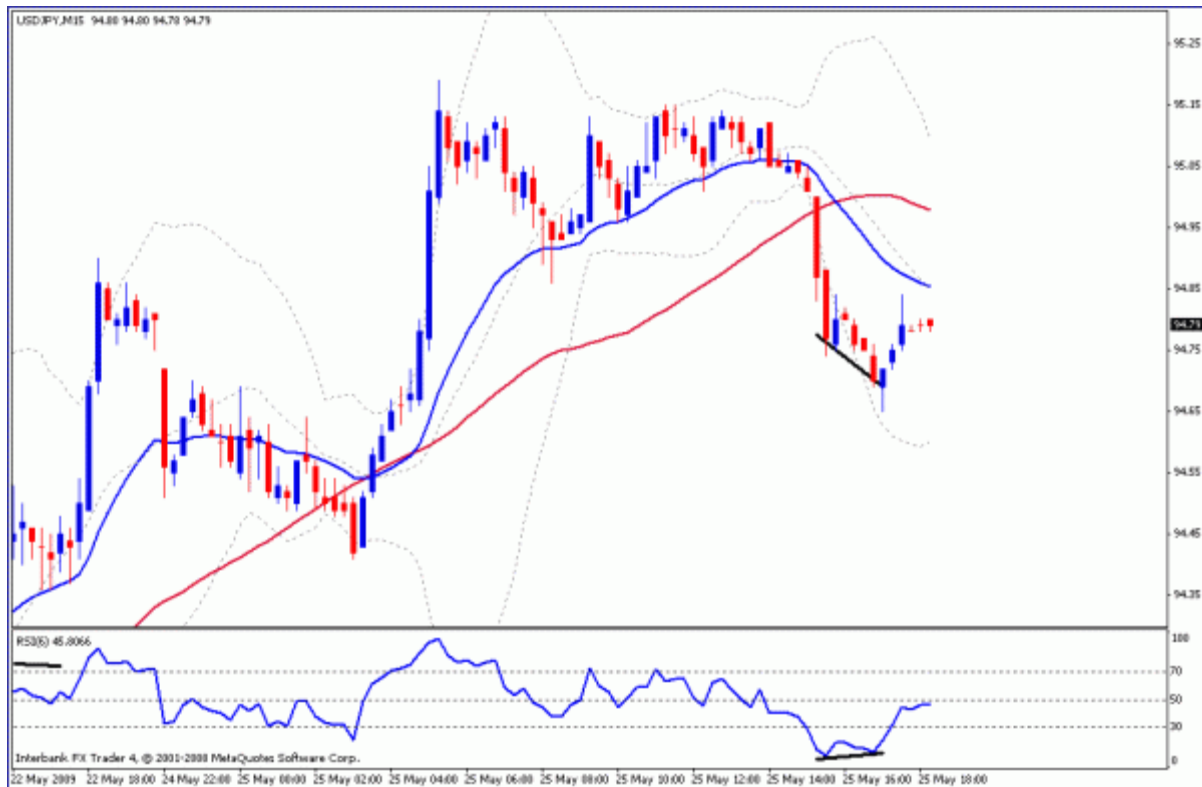


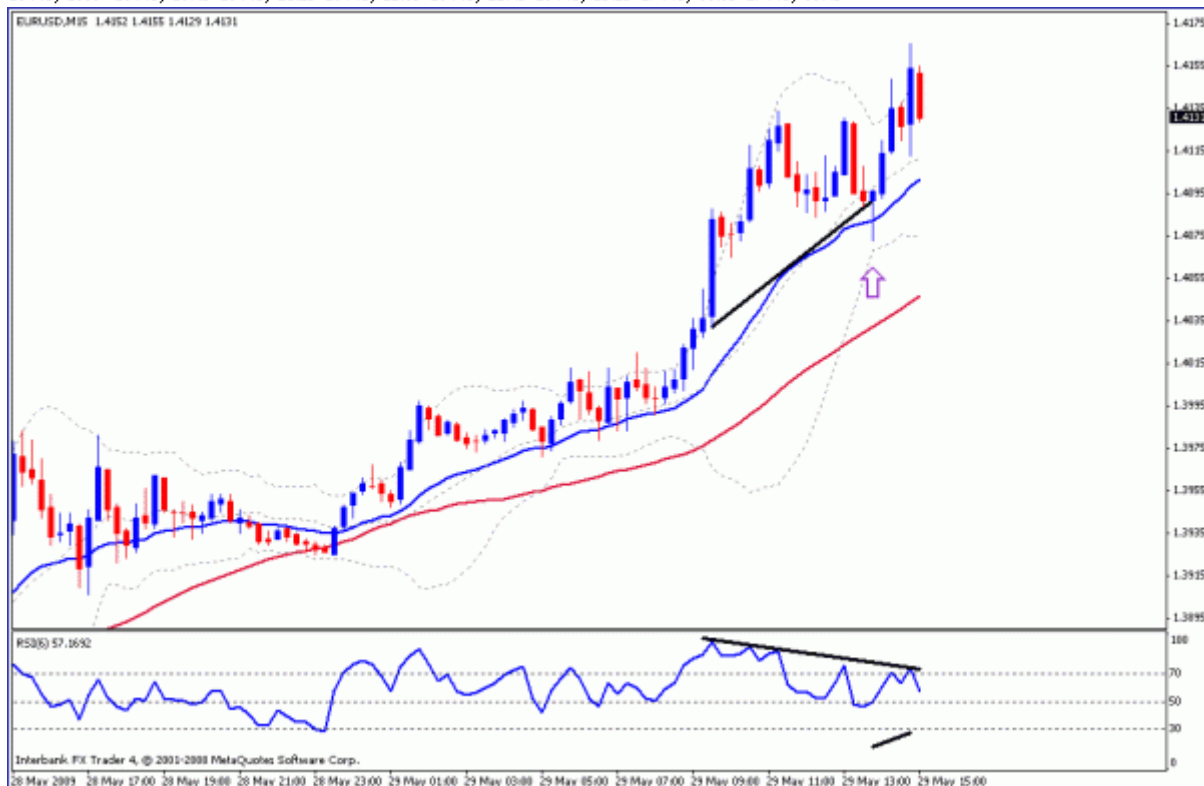
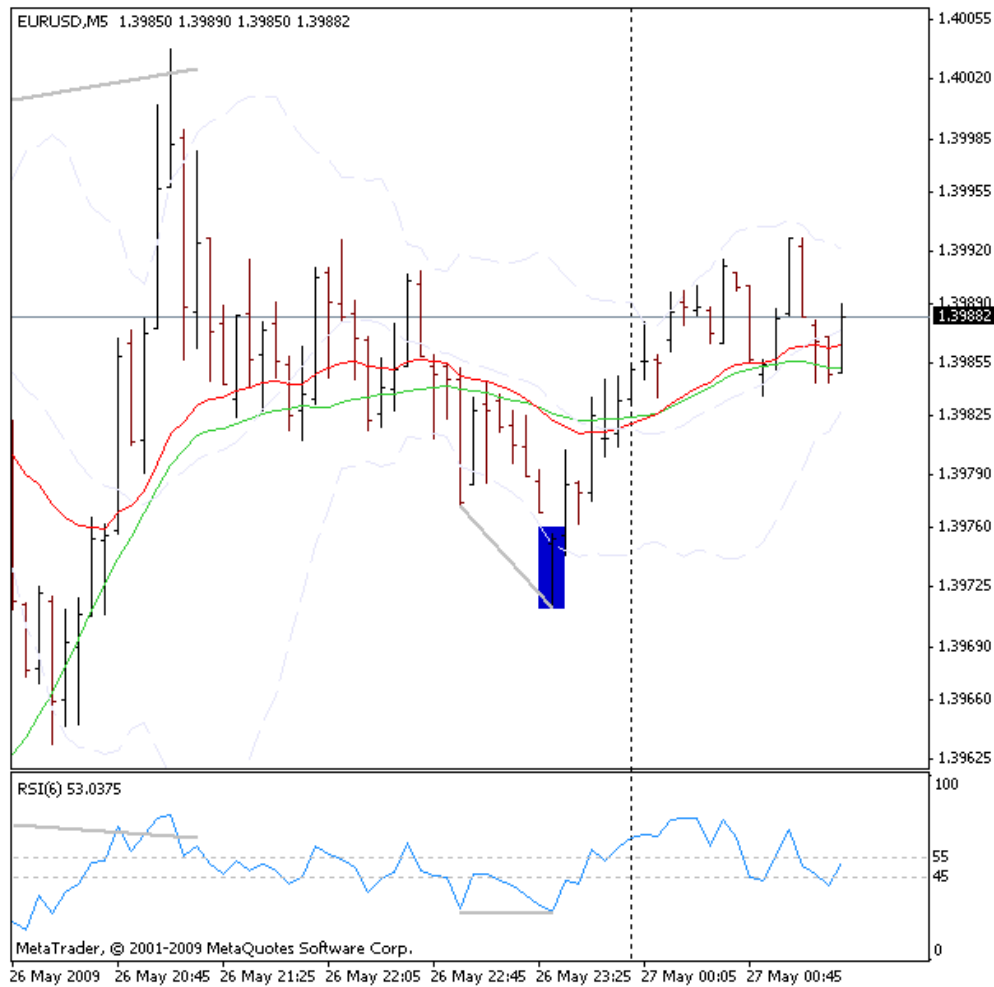




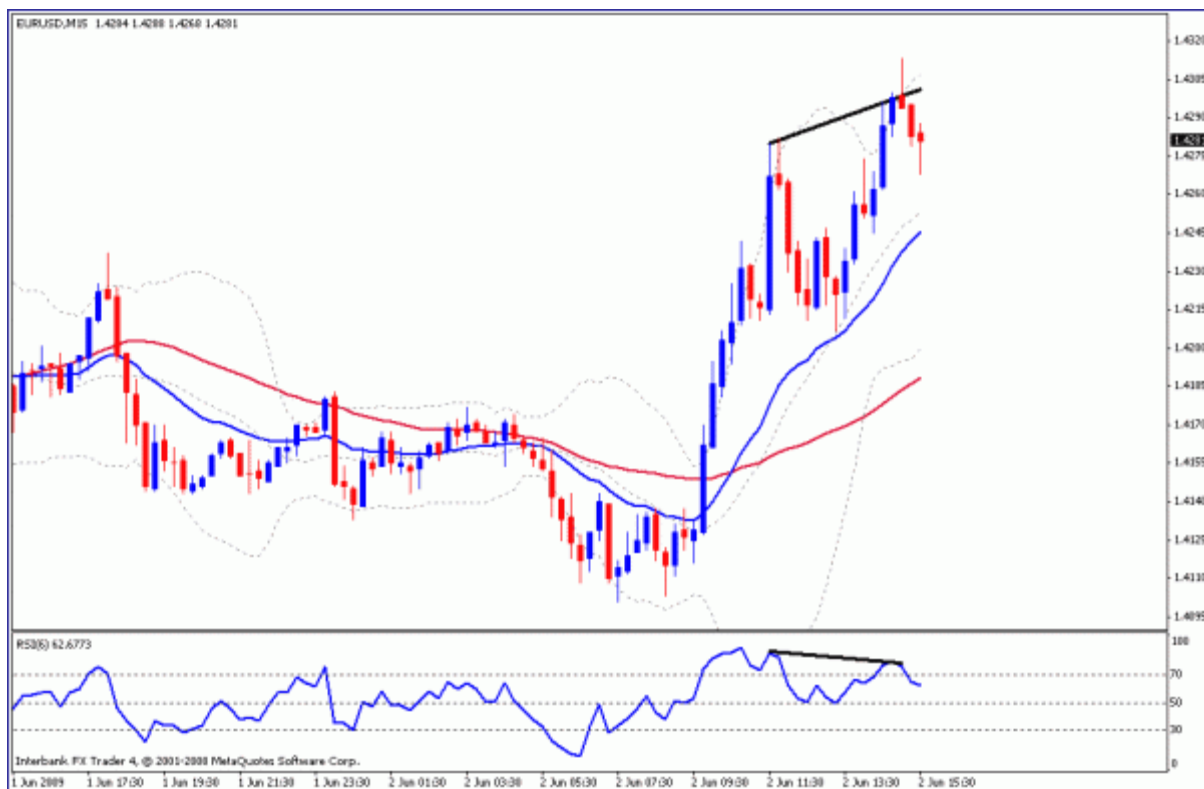
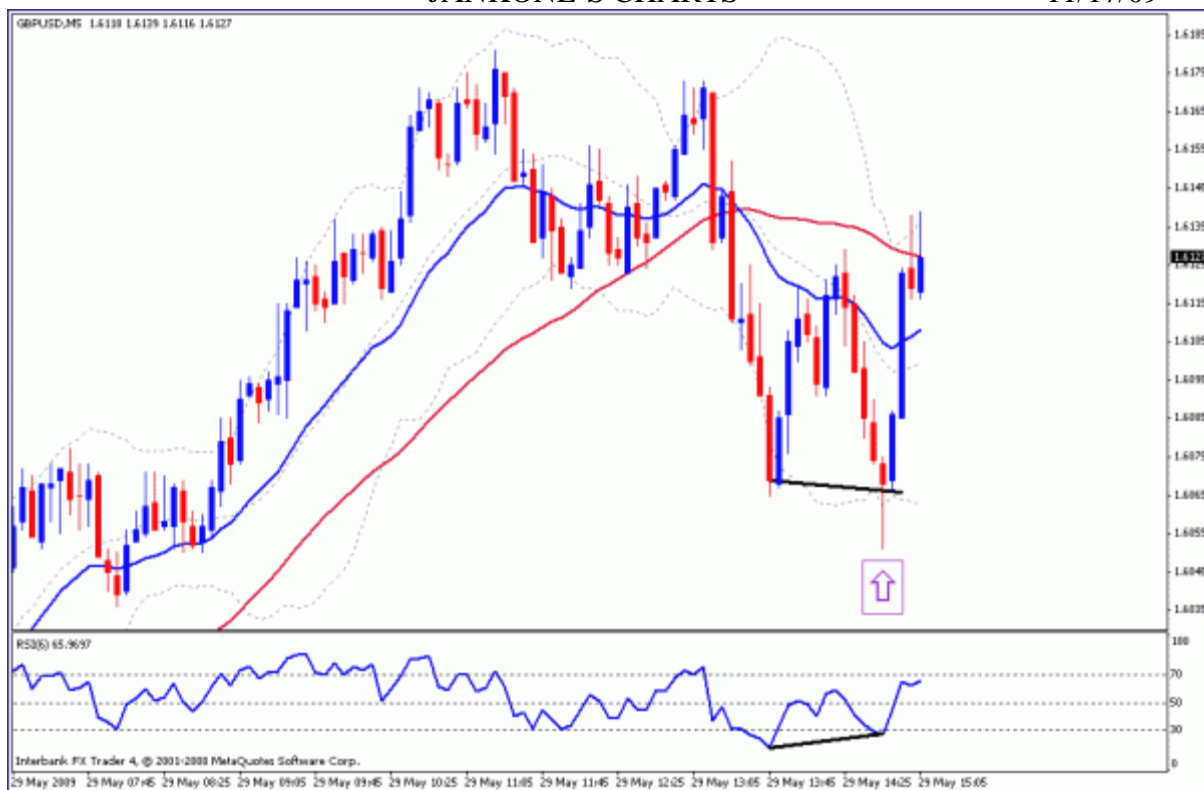




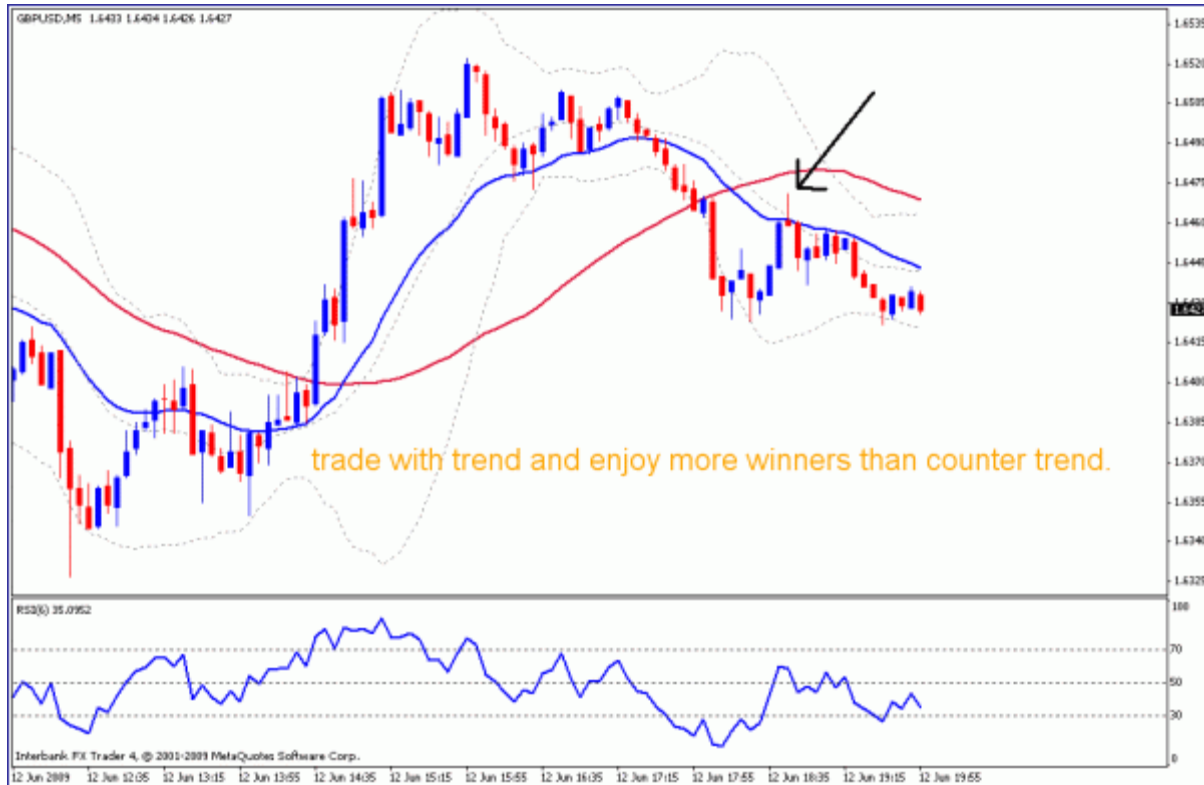




I think he got the DIV wrong on this one... but it was still divergence, if using the lows from the RSI.



















- 1) huge pin, trend is down, so ct. div = trade
- 2) double top + div, nice pin. possible trade
- 3) ct, but big div and big pin = trade
- 4) definitely no trade, small pin, small nose, bad location for me. = no trade





- 1) CT . Div + pin= Trade.
- 2) same
- 3) same :-)
- 4) no div, small pin... i don't feel ok with this. skipped
- 5) nice pin, but no div = skipped (trend is down, so you need div)









