

Avez Session System with Sonic R Indicator

From today 22 Jul 2015, I will starting to explain how the Avez Session System work in Sonic R Indicator.

And Thanks for Sonicdeejay Kyaw create this Indicator.

You also can learn Sonic R System at the same time www.sonicrsystem.com

Avez Session is a Session Trading. Avez Session is an Intraday Trading Style.

1. Asian Session
2. London Session
3. Middle London Session
4. NewYork Session
5. Middle NewYork Session
6. Sleeping Trade

Mostly this system is counter trend, will using buy low sell high strategy.

London Open - 3pm SGT

Middle London - 6pm SGT

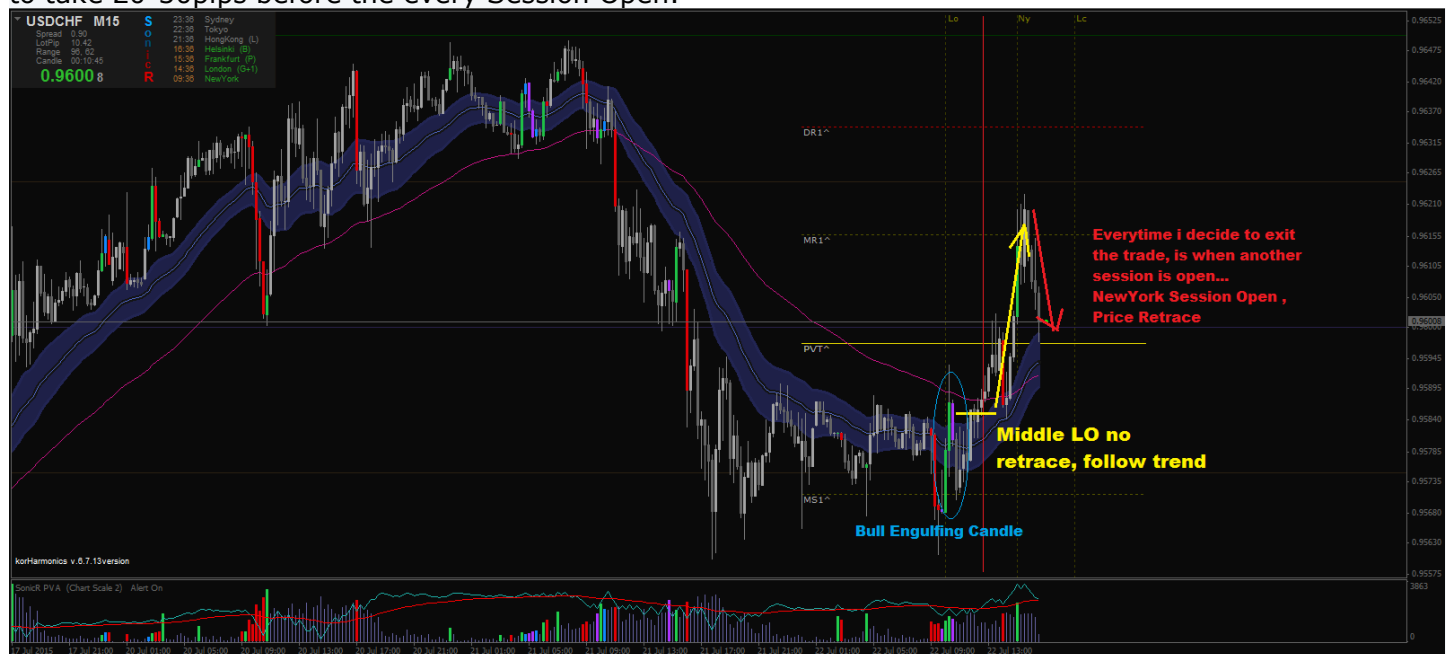
NewYork Open - 8pm SGT

Middle NewYork - 11pm SGT

Sleeping Trade - 1am/2am SGT

Middle LO no retrace, Follow the Trend

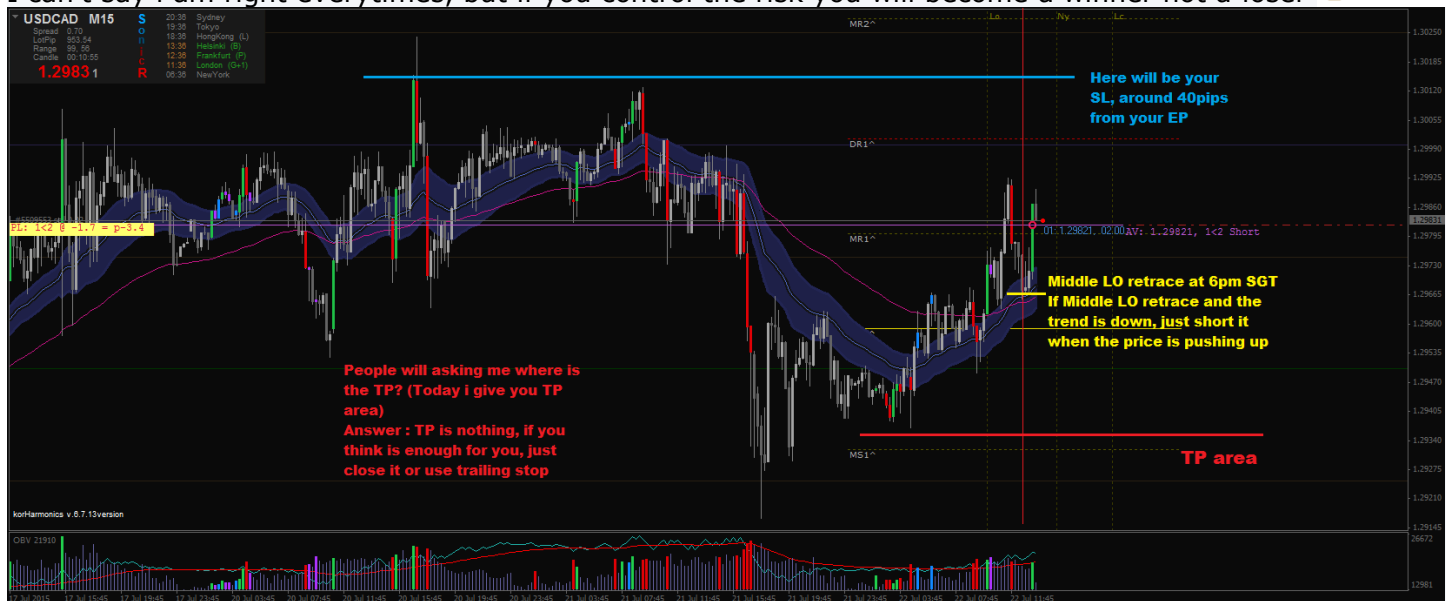
Sometimes NewYork Session open price will trying to retrace to balancing the market, so mostly i will try to take 20-30pips before the every Session Open.



Middle LO retrace, Counter the Trend

Example if Middle LO retrace 😊

I can't say i am right everytimes, but if you control the risk you will become a winner not a loser 🤖



Happy SL 😊



Middle NewYork

Middle NewYork for me mostly is counter the trend when big movement with no retrace

What is retrace ?

Only when a big V-shape come out just called a retrace...



You will never know the market sometimes...

For my advice, a new trader should use Trailing Stop when place any order to protect your profit become loss

Trade Safe when you right, Close Trade when you wrong 🤖

The Entry is Middle NewYork, i plan to get more... after i go sleep the profit become loss 😞



Sleeping Trade

Sleeping trade is 1am to 2am SGT

1. Only trade **xxx/USD & USD/xxx pair**, try to skip AUD
2. News + big movement can use only
3. Try to enter at higher price or lower price / buy low sell high
4. From daily high / low, calculate **20 - 30 pips** will be your TP area (example daily higher 1.2100, so your TP is 1.2070)
5. Use SL **30pips** from higher price (Example daily higher 1.3020, your SL is 1.3050)
6. Open one or two position with money management



Yes when the pair has a big movement, we trade counter movement at 1am-2am, for example now the trend is up, and you short at 1-2am SGT , your SL is daily higher+30 pips, TP is daily higher-30 pips if you buy when trend is down, SL is daily lower-30 pips, TP is daily lower+30 pips

Example: Daily Higher 1.2070, you short it, so SL is 1.2100, TP is 1.2040 (if you EP is 1.2060, your TP will be 1.2040 from the Daily Higher 30 pips)

Sleeping Trade Example (23 Jul 2015), 41 pips retracement from Low for EU

