

TWO DIBS TRADES in a week

Login 2:50am Google Powered

[Home](#)[Forums](#)[Trades](#)[Calendar](#)[News](#)[Market](#)[Brokers](#)

USD/JPY 1H Chart

☐ Live 2:50am Min

Jul 1 12:00am - Jul 7 2:00am

IB #1

02/07/14 10am UK time (7pm JST)

O → 101.44

CL → 101.45

H → 101.45

L → 101.42

IB #2

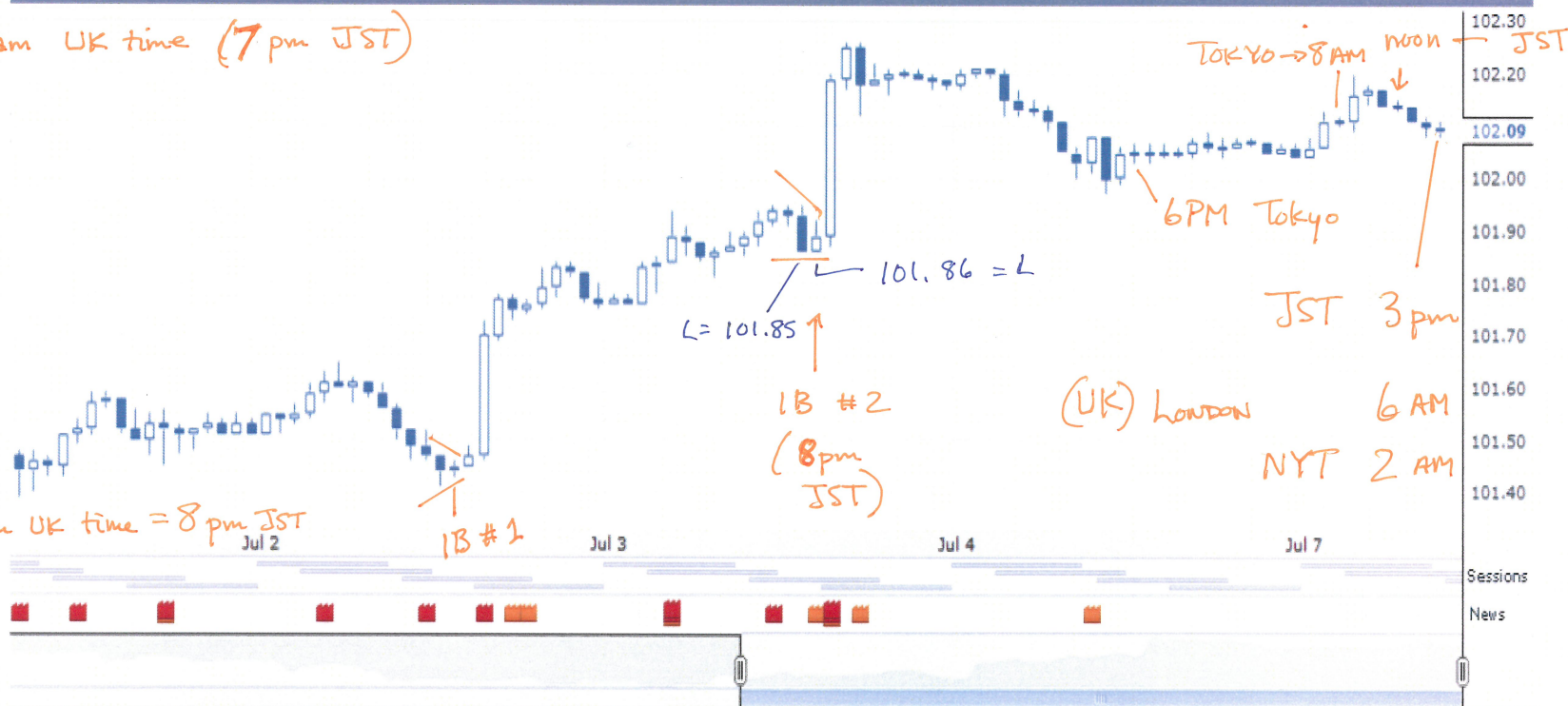
03/07/14 11am UK time = 8pm JST

O → 101.86

CL → 101.88

H → 101.91

L → 101.86



USD/JPY

[Change](#)

Lines

[Add Trend Line](#)[Add Horizontal Line](#)

Type

[Add Vertical Line](#)☒ Candle[Clear Chart](#)☐ OHLC☐ Line

Interval

☐ 1M☐ 5M☐ 15M

Impact Icons

☒ Breaking News☒ Actual Impacts

Sessions

☒ Calendar Event☒ Show Sessions☐ Expected Impacts☐ Highlight on Cursor

Sydney:

[All](#) [None](#)