

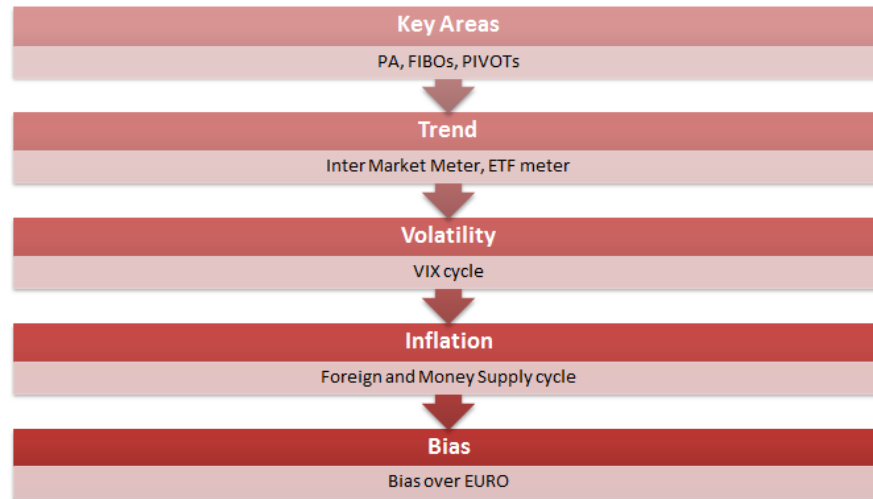
IN DEPTH MARKET REPORT

JANUARY 29 2013

COPYRIGHT: Unless explicitly stated otherwise, all content displayed in this document possess copyright by the author, 2013., All rights reserved. The copying, publication or redistribution of this page content, by framing or similar means - including all data found on the document - is explicitly prohibited without prior written consent.

DISCLAIMER: Trading the Forex Market is a very risky task and is considered one of the hardest markets to trade. This report only represent "Bias", any losses or profit made are considered under your responsibility. By reading this report, you are accepting all of this and you are fully responsible for any action you will take based on In Depth Market Report.

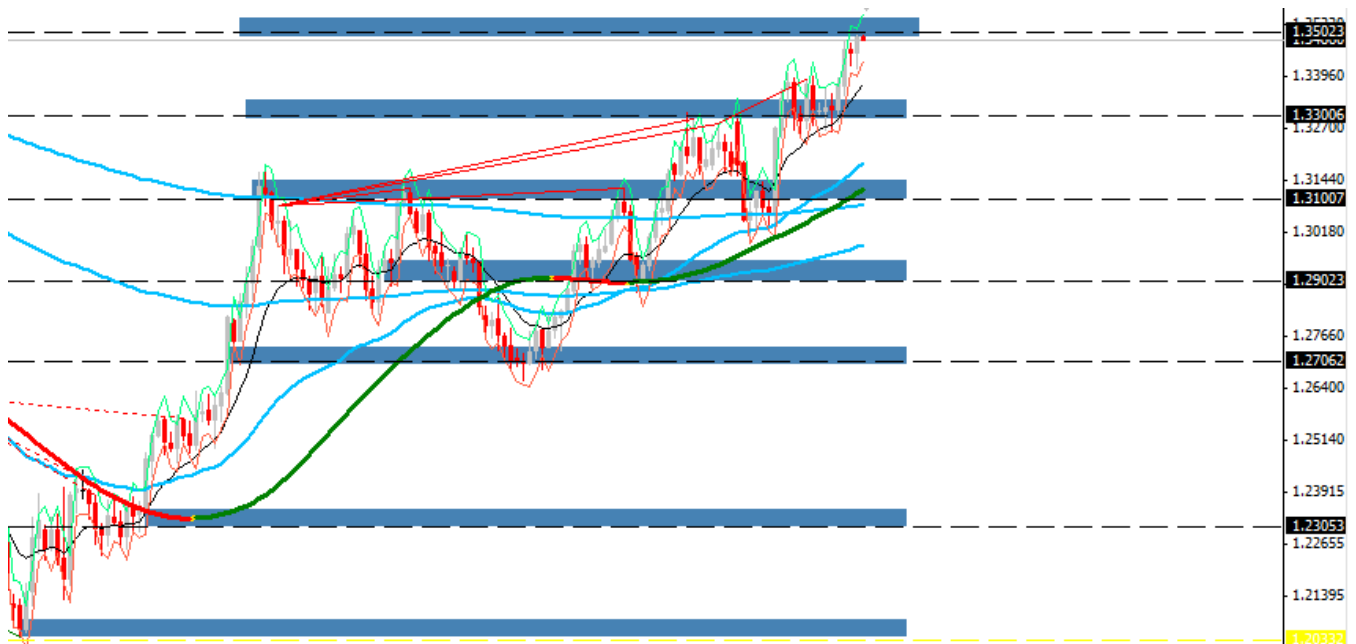
GETTING BIAS



KEY AREAS EURO USD

Key Areas based on PA, Flip Zones, Fibo 61, 50 and Round numbers. Reaction Bull/Bear is expected on those areas.

- 1.35 * Price
- 1.33
- 1.31
- 1.29
- 1.27
- 1.23
- 1.20



TREND: BULLISH FOR EURO

It's determined by Inter Market Meter. According to extensive back test and forward test results (Crosses) are 80% accurate. However these crosses do not occur often. (Average of 8 per year)

Inter Market Meter currently take into consideration the following assets:

1. SPX (SP 500 index)
2. WTI (Oil)
3. EURUSD
4. USDCHF
5. USDx
6. AUDUSD
7. GBPUSD
8. GOLD
9. SILVER
10. Bonds US 10 (Intrinsic)

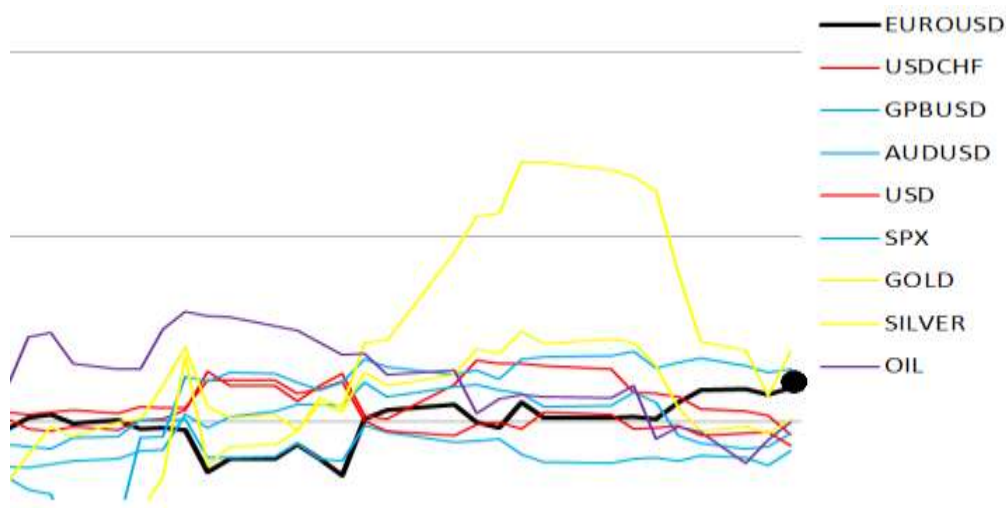
Additional a second indicator ETF meter will be used for confirmation on Equities and Commodities.

ETF meter currently take into consideration the following assets:

1. NUGT (Bull shares GOLD)
2. DUST (Bear Shares GOLD)
3. SDS (Bear Shares SPX)
4. SSO (Bull Shares SPX)

INTER-MARKET METER: MARKET IS STABILIZING

Inter market signal comes when Euro Usd and Correlated Assets (Spx, metals, audusd and gbpusd) cross (up/down) usdchf and usdx.



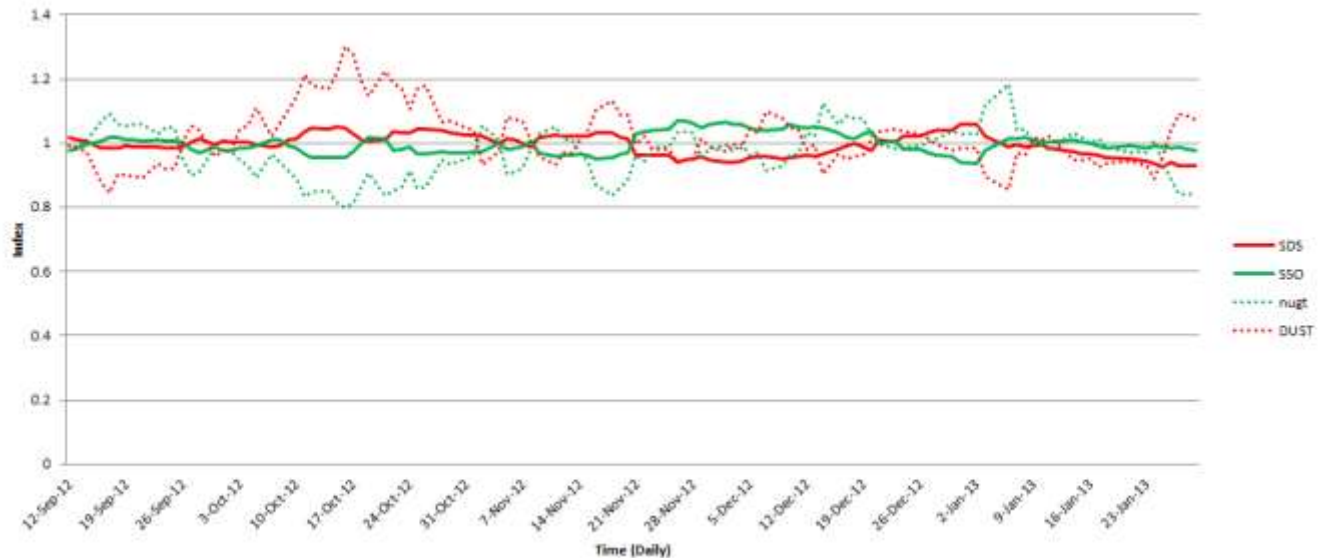
1. SPX (SP 500 index): BULL
2. WTI (Oil): BULL
3. EURUSD: BULL
4. USDCHF: BEAR
5. USDx: BEAR
6. AUDUSD: BEAR
7. GBPUSD: BEAR
8. GOLD: BULL
9. SILVER: BULL

General Trend: Bullish for Euro



ETF METER: NEUTRAL

ETF Meter should be used as a confirmation on the general trend; however this is not an iron law.



1. NUGT (Bull shares GOLD): BEAR
2. DUST (Bear Shares GOLD): BULL
3. SDS (Bear Shares SPX): BEAR
4. SSO (Bull Shares SPX): BULL

General Trend:



VOLATILITY: EXTREME LOW (ENTRY BIAS)

Implied Volatility is measured by VIX cycle. Extreme levels could indicate a possible entry.

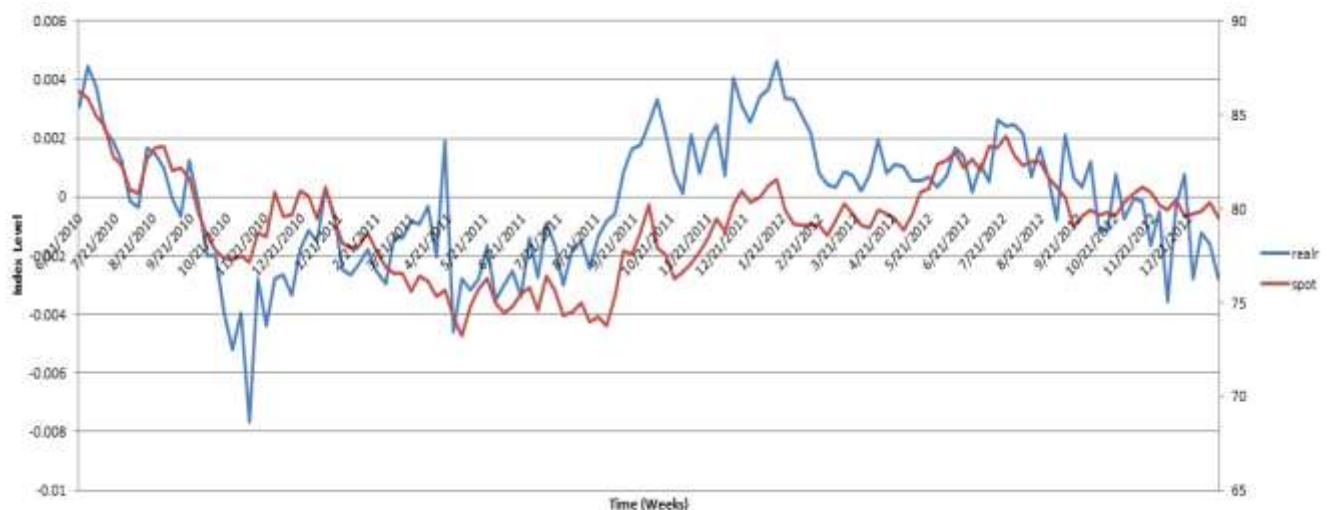
VIX CYCLE:



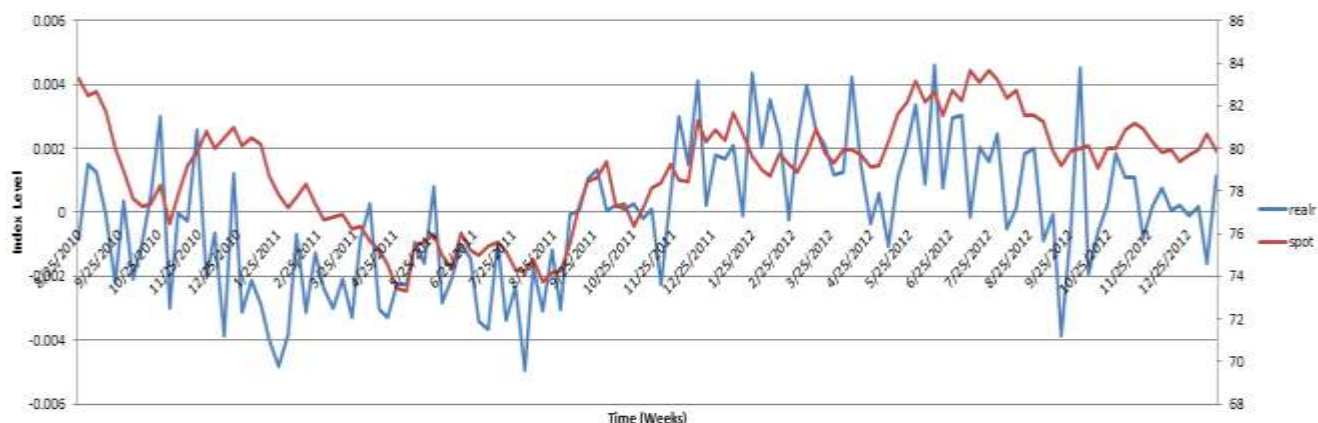
INFLATION: REAL < SPOT & N/A

Inflation is measured by Foreign Related Financial Institutions and Money Supply cycle. This cycle will be adjusted as inflation affecting the USDx returns, reflecting the Real USDx vs Spot USDx. Signal: “When spot diverges from real”

Money Supply (Real vs. Spot): “When spot price diverges from real price, there could be a bias”



Foreign Related (Real vs. Spot): “When spot develops higher lows or lower Highs, there could be a bias”. Technical Patterns could also generate bias.

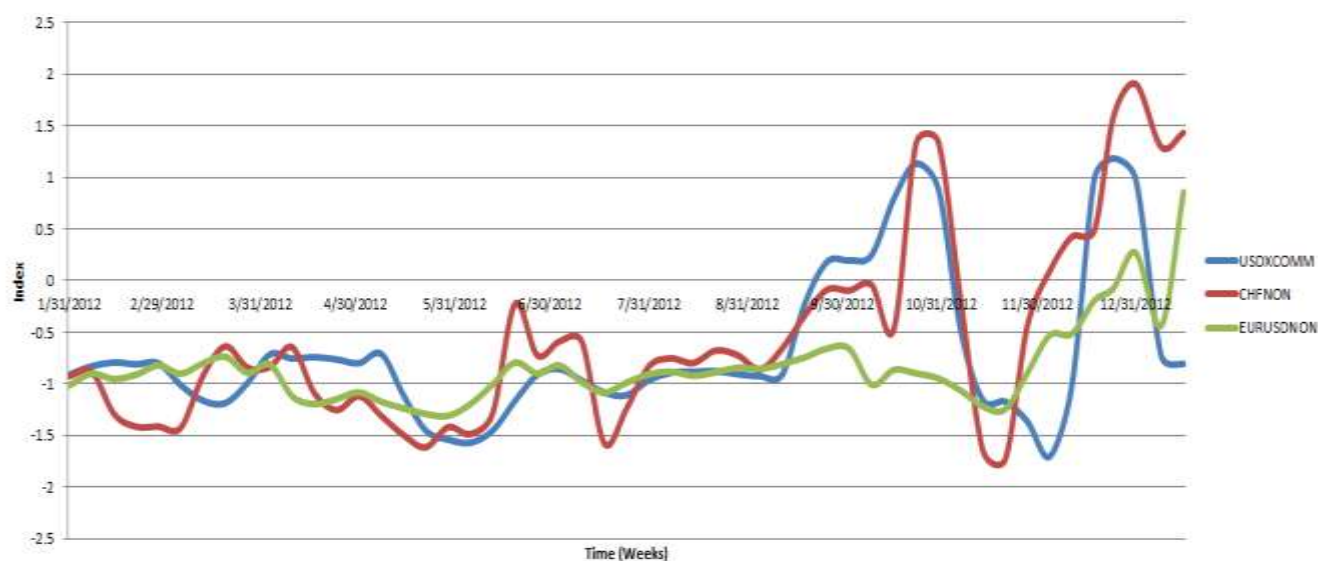


ORDER FLOW: DX>EURO FX, SWISS AT EXTREME

Order Flow is measured by Order Flow Meter, based on U.S. Commodities and Futures Commission data.

ORDER FLOW METER:

“Signal when $Dx > \text{Euro fx}$ and Swiss or flow at extreme level, bias is generated”



SUMMARY: BULLISH

KEY AREAS:

- 1.35
- 1.33
- 1.31
- 1.29
- 1.27
- 1.23

TREND: Market did not stabilize to the bearish side but to the bullish side, however price is at 1.35 heavy supply area.

VOLATILITY: Near the 0 level, major move coming.

INFLATION: REAL<SPOT / Lower Highs => Depreciation USD

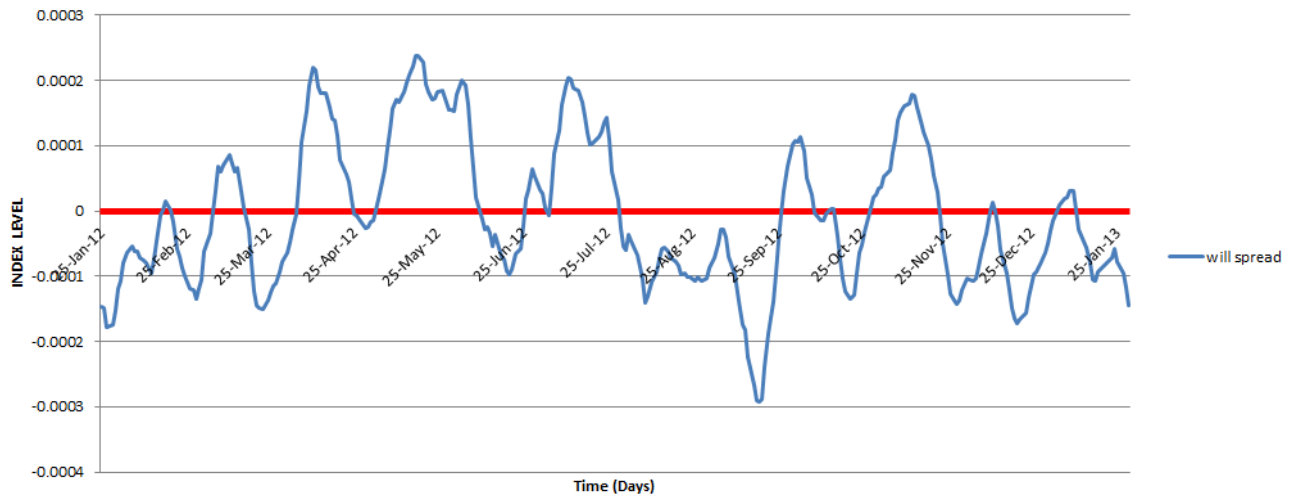
ORDER FLOW: DX< EURO FX, SWISS AT EXTREME; BULLISH

FINAL BIAS: BULLISH EURO, LOOKING FOR LONG ENTRIES NEAR THE 1.34

ADDITIONAL: NOT AT 0 LEVEL CROSS

WILL METER

Larry Williams Spread meter is based on inter market relationships. "When index is at 0 point look for an entry into key areas with PA" This is my way of using it's not the HOW LARRY USE IT.



CALCULATIONS FOR WILL METER

You need a Primary Market (Currencies) and a Secondary Market (Bonds, Commodities, Equities). Take the 5 and 20 MA of the $RATIO (Primary\ Market / Secondary\ Market)$, then take the difference between 20-5 Ma. This spread is the Index. This is how Larry explained the calculation of Will Spread Meter. This helps to filter entries and if you use it with PA, FIBOS, S/R, etc. this will generate profit.